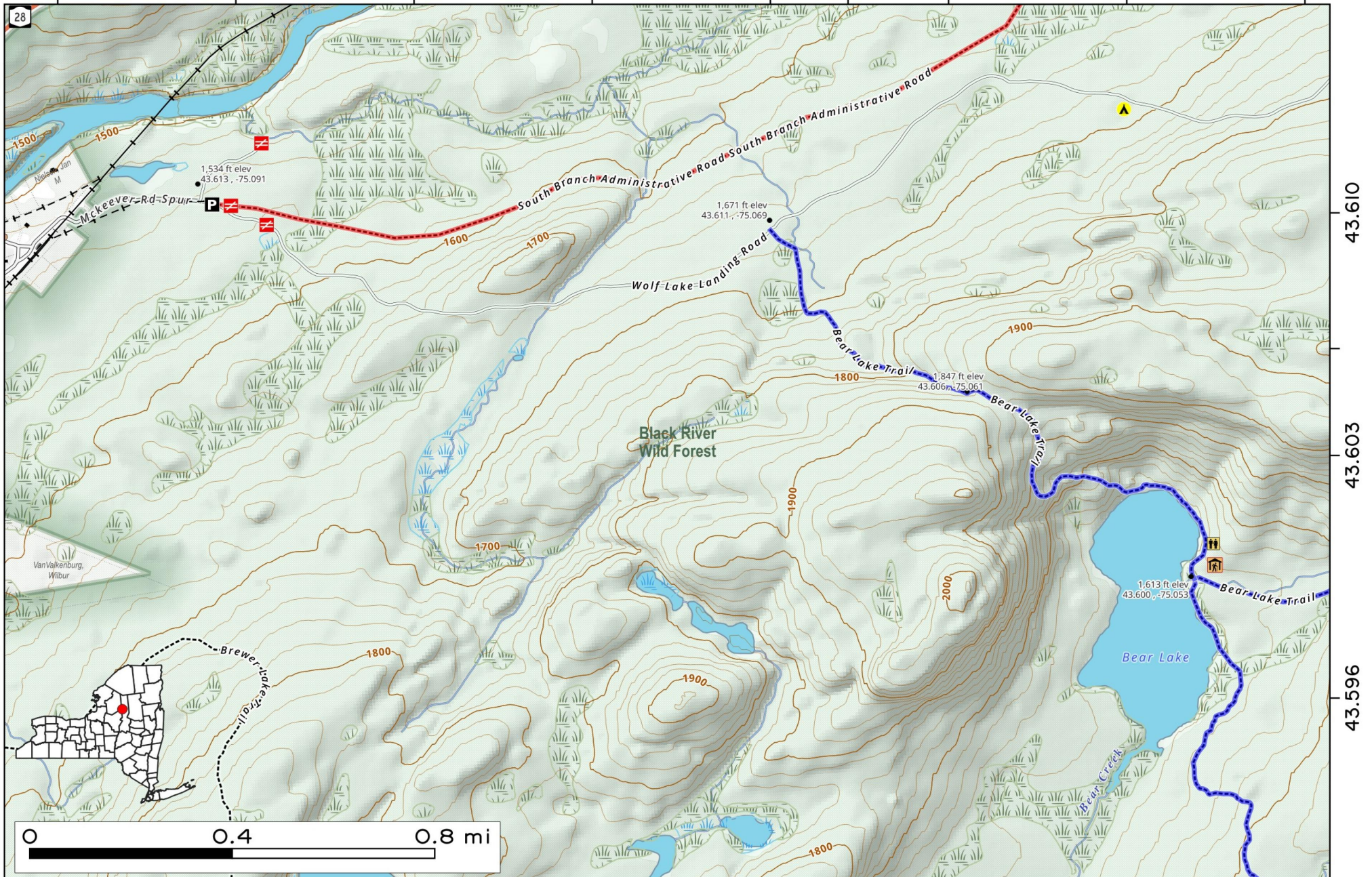


Bear Lake Right before you cross the Mose River heading north on NY 28 in McKeever, take the one-lane Wolf Lake Landing Road (Woodhull Reservoir) to the Bear Lake Parking Area. Then it's a 2-mile gently climb that gets steeper as you head through a notch then descend to Bear Lake. There is a campsite and lean-to on the lake.



Map created by Andy Arthur on 11/25/2025 in QGIS 3.44.4-Solothurn. Contains NYS GIS and DEC data with additional campsites added by Andy. More maps at andyarthur.org.

-75.096 -75.089 -75.082 -75.075 -75.068 -75.061 -75.054 -75.047



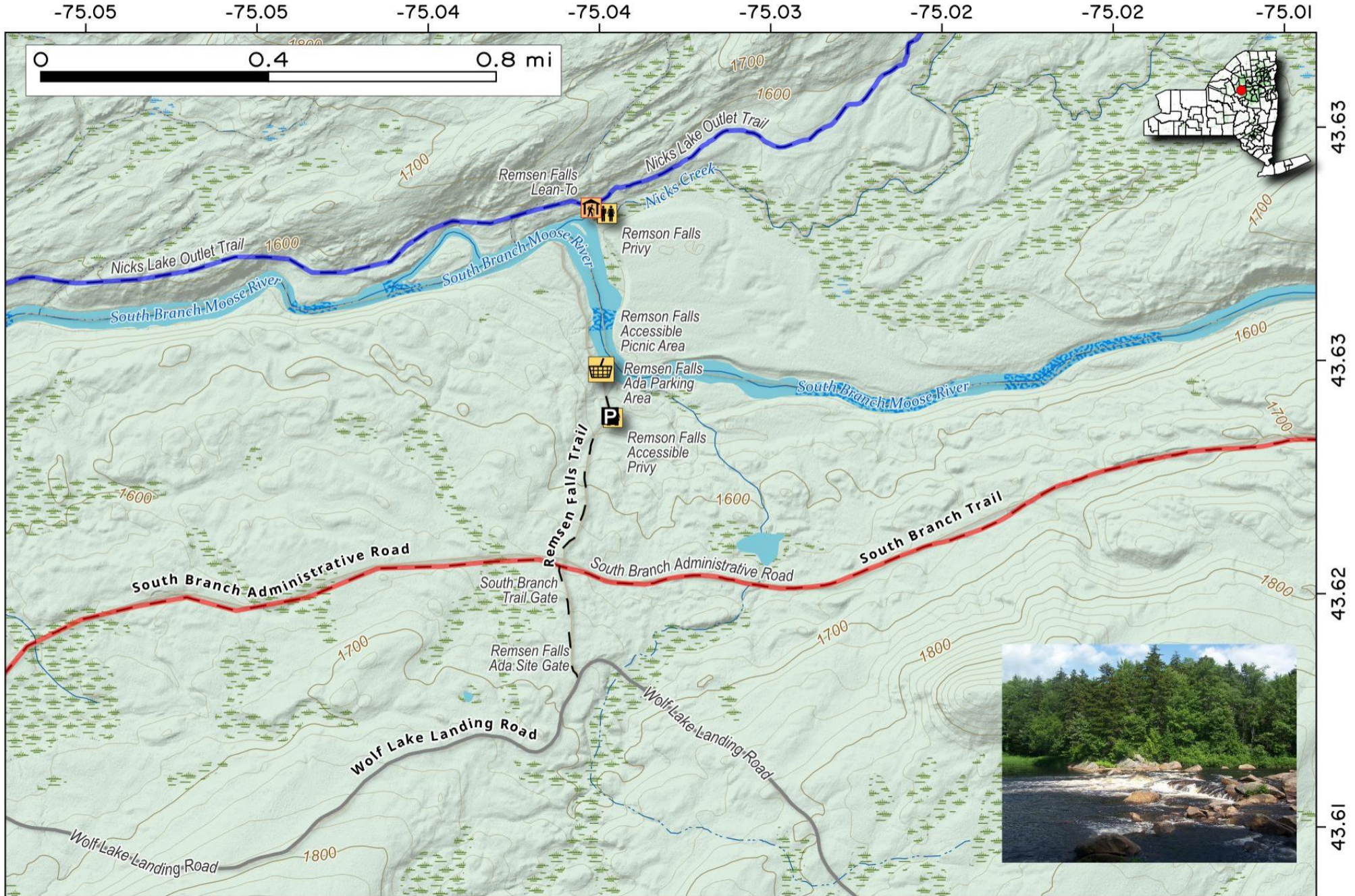
43.610

43.603

43.596

Remsen Falls Trail. 3/4 mile accessible old woods road back from Wolf Lake Landing Road (gated - seasonal use only). 20 foot drop on Moose River, often with a lot of water over it. There is a campsite, picnic table and outhouse at falls, and a lean-to on the northside of falls, accessed via Nicks Lake Campground Trail.

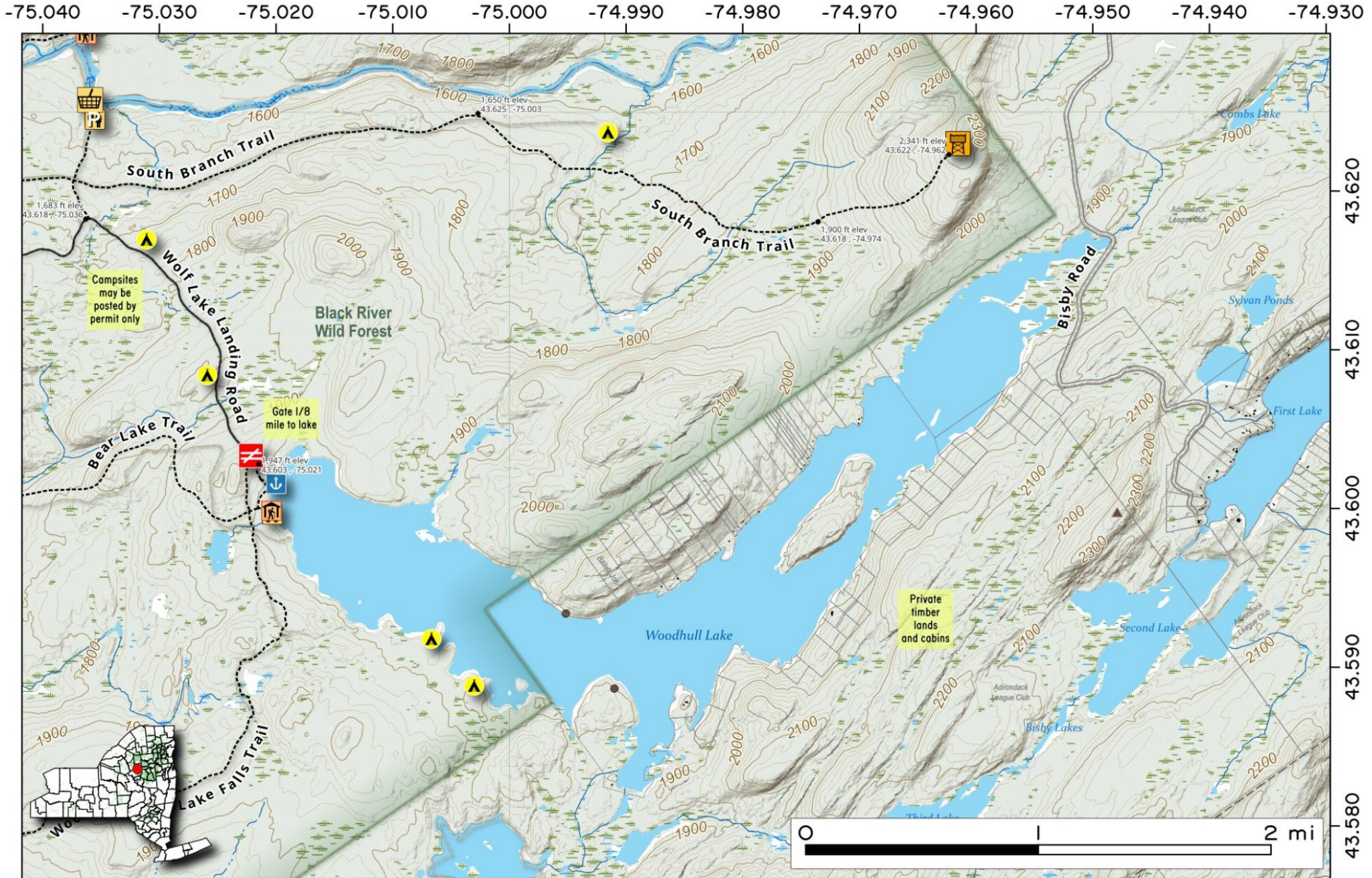
Map created by Andy Arthur on 3/17/2025 in QGIS 3.34.14-Prizren. Contains US Forest Service Base Map, NYS DEC data with additional campsites added by Andy. More maps at andyarthur.org.



To access **Wood Hull Lake**, take Wolf Lake Landing Road to the parking area and carry your boat 1/4 mile to the lake. The lake has a lean-to, outhouse, and carry-in boat launch. A dam is located at the southern end. The lake is partially developed with cabins along the shoreline.



Map created by Andy Arthur on 9/16/2025 in QGIS 3.44.2-Solothurn. Contains US Forest Service Base Map, NYS DEC data with additional campsites added by Andy. More maps at andyarthur.org.

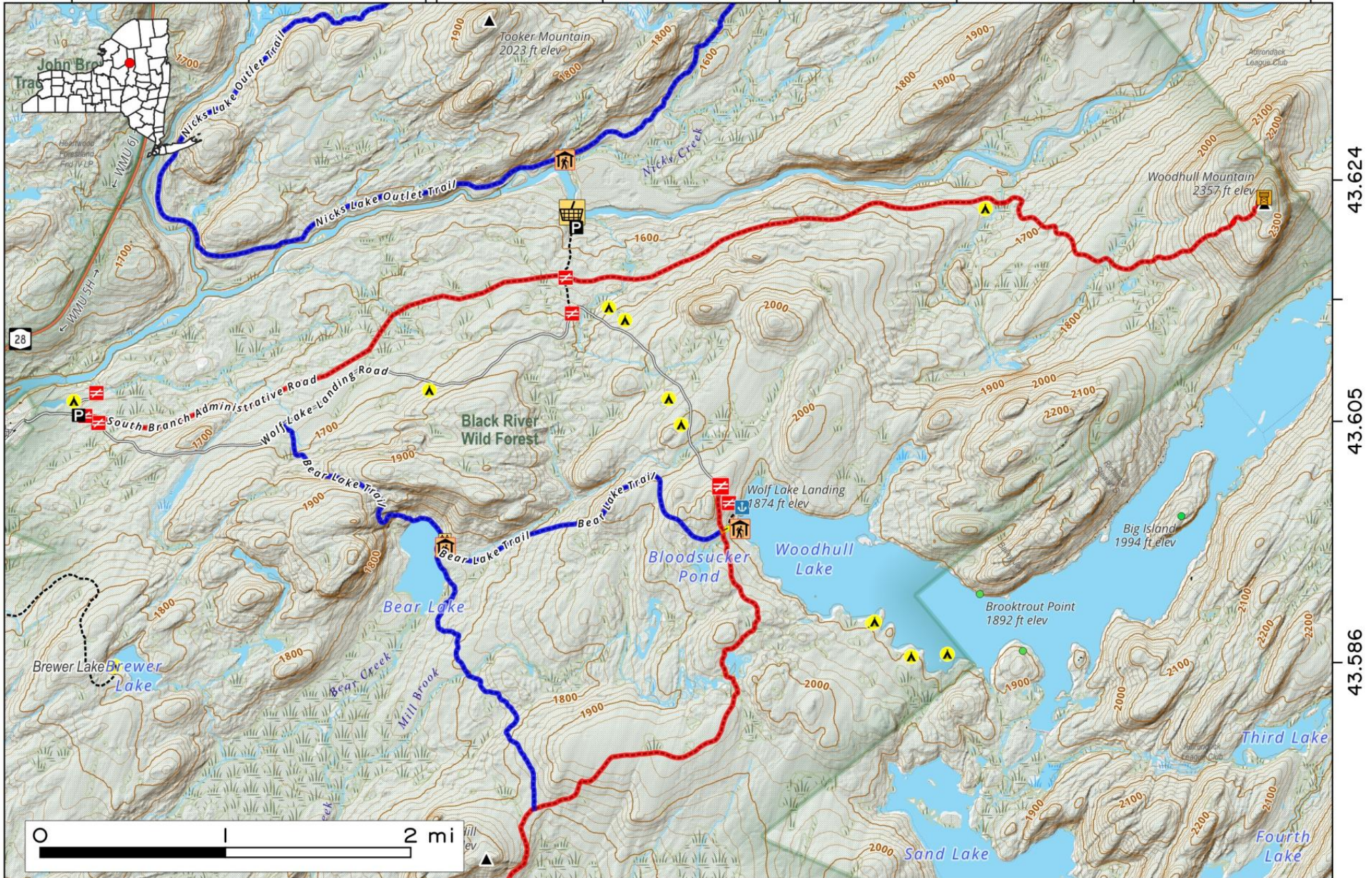


Woodhull Mountain. Long 7 1/2 mile hike (one way) along an old railroad grade to the steep incline to fire tower overlooking Woodhull Lake.



Map created by Andy Arthur on 10/10/2025 in QGIS 3.44.3-Solothurn. Contains NYS GIS and DEC data with additional campsites added by Andy. More maps at andyarthur.org.

-75.088 -75.069 -75.050 -75.031 -75.012 -74.993 -74.974 -74.955



43.624
43.605
43.586