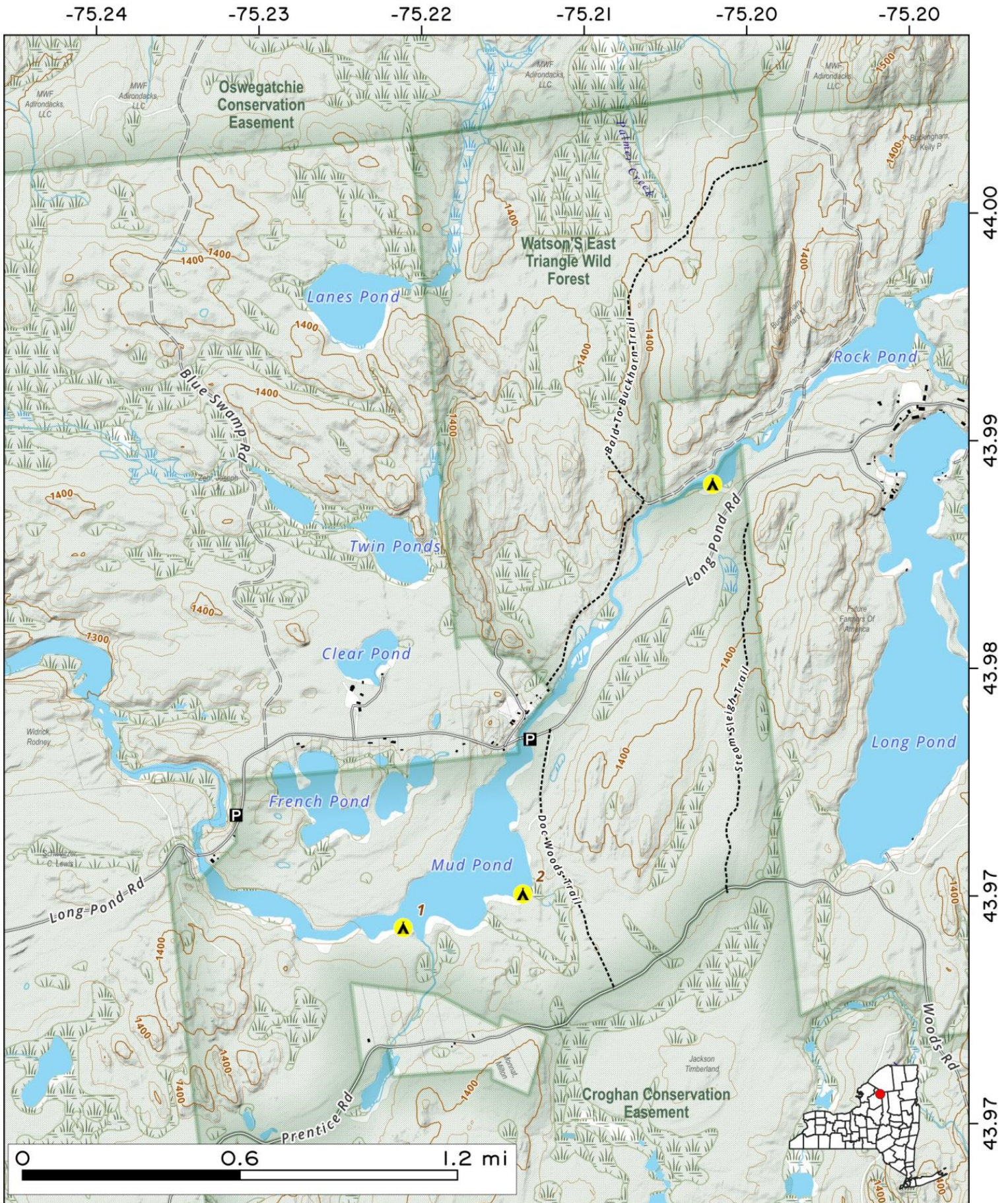


Keck Trail Map, June 16, 2017 by AndyArthur.org in QGIS 2.18.9 and Python. Street Map is Copyright © OpenStreetMap contributors, CC BY-SA. NYSDEC Data: DEM, Borders, ADK Wetlands, Trails, Assets. True North. 1 inch = 0.7 miles. Projection: NAD83 / UTM zone 18N. Coordinates: 0.01° latitude-longitude (WGS84). Contours are 20 feet.

Mud Pond - Oswegatchie River. State land East along a flatwater section of the Oswegatchie River along Long Pond Road.



Map created by Andy Arthur on 10/2/2025 in QGIS 3.44.3-Solothurn. Contains NYS GIS and DEC data with additional campsites added by Andy. More maps at andyarthur.org.

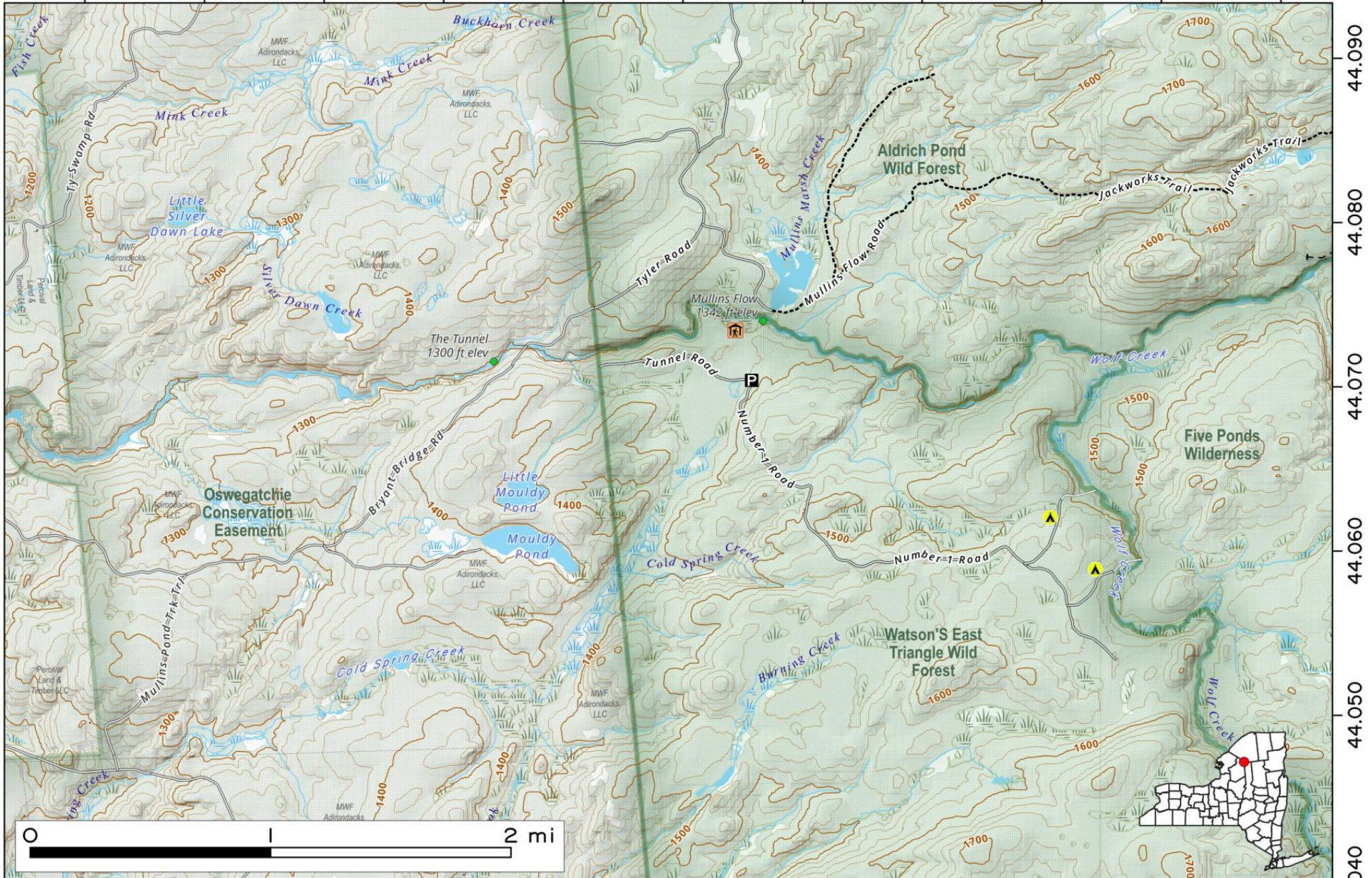


Wolf Creek Road. A one-lane dirt road that runs along and near portions of the Wolf Creek. The road is travel until you reach the Mullins Flow Campsite then becomes narrower rougher as you head to the Wolf Creek Campsites in Watsons East Triangle Wild Forest. Road.

Map created by Andy Arthur on 10/27/2025 in QGIS 3.44.3-Solothurn. Contains NYS GIS and DEC data with additional campsites added by Andy. More maps at andyarthur.org.



-75.210 -75.200 -75.190 -75.180 -75.170 -75.160 -75.150 -75.140 -75.130 -75.120 -75.110



44.090

44.080

44.070

44.060

44.050

44.040