

# Big Pond (Hoffmans Notch Trail). 2.5 miles north of Hoffmans Road there is a trail back to Big Pond on the way north to Hoffmans Notch Trail.

Map created by Andy Arthur on 10/6/2025 in QGIS 3.44.3-Solothurn. Contains NYS GIS and DEC data with additional campsites added by Andy. More maps at [andyarthur.org](http://andyarthur.org).



-73.830      -73.825      -73.820      -73.815      -73.810      -73.805      -73.800      -73.795



43.860  
43.855  
43.850  
43.845

**Boreas Railroad** runs deep through the wild forest along the Vanderwhacker Brook. While you'll be stepping over railroad tires and dodging brush, the tracks are generally clear and lightly used as they go along the Vanderwhacker Brook from Moose Club Way (Vanderwhacker Road) down to Northwood Club Road.

Map created by Andy Arthur on 10/2/2025 in QGIS 3.44.3-Solothurn. Contains NYS GIS and DEC data with additional campsites added by Andy. More maps at [andyarthur.org](http://andyarthur.org).



-74.10    -74.09    -74.08    -74.07    -74.06    -74.05    -74.04    -74.03    -74.02



43.88  
43.87  
43.86  
43.85  
43.84  
43.83  
43.82  
43.81

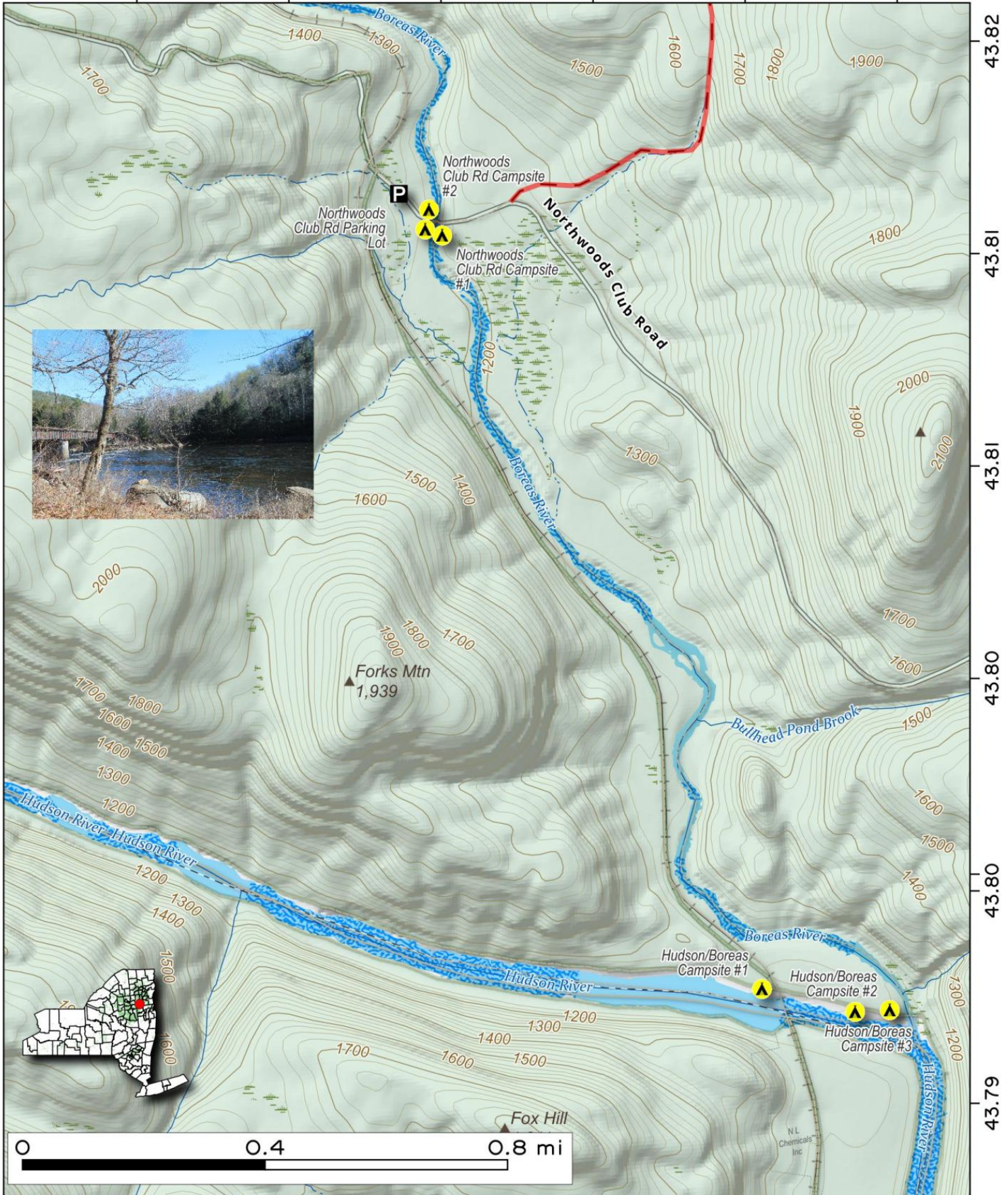


**Hudson - Boreas River Campsites.** From where Northwoods Club Road is crossed by the Tahawus Rail line, you can take the rarely used rail line south to Hudson River along the Boreas River to a series of campsites along the river.

Map created by Andy Arthur on 5/9/2025 in QGIS 3.34.15-Prizren. Contains US Forest Service Base Map, NYS DEC data with additional campsites added by Andy. More maps at [andyarthur.org](http://andyarthur.org).



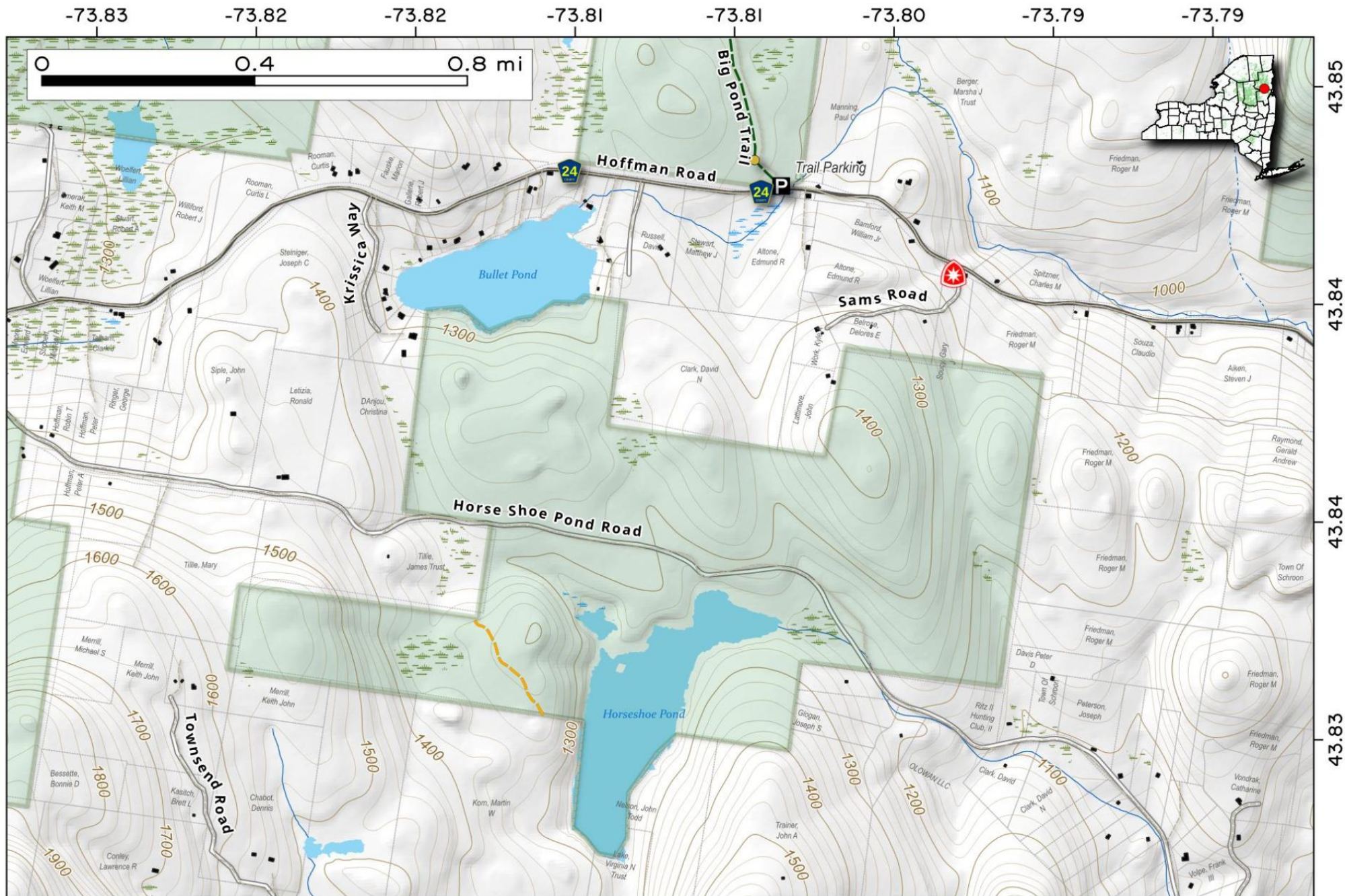
-74.07      -74.07      -74.06      -74.06      -74.05      -74.05



# Bullet and Horseshoe Pond

Both ponds are not far from Big Pond Trail Head near Schroon Lake. Horseshoe Pond is located off Horseshoe Pond Road while Bullet Pond is developed on the north end but can be accessed via a back country hike.

Map created by Andy Arthur on 3/5/2025 in QGIS 3.34.14-Prizren. Contains US Forest Service Base Map, NYS DEC data with additional campsites added by Andy. More maps at [andyarthur.org](http://andyarthur.org).

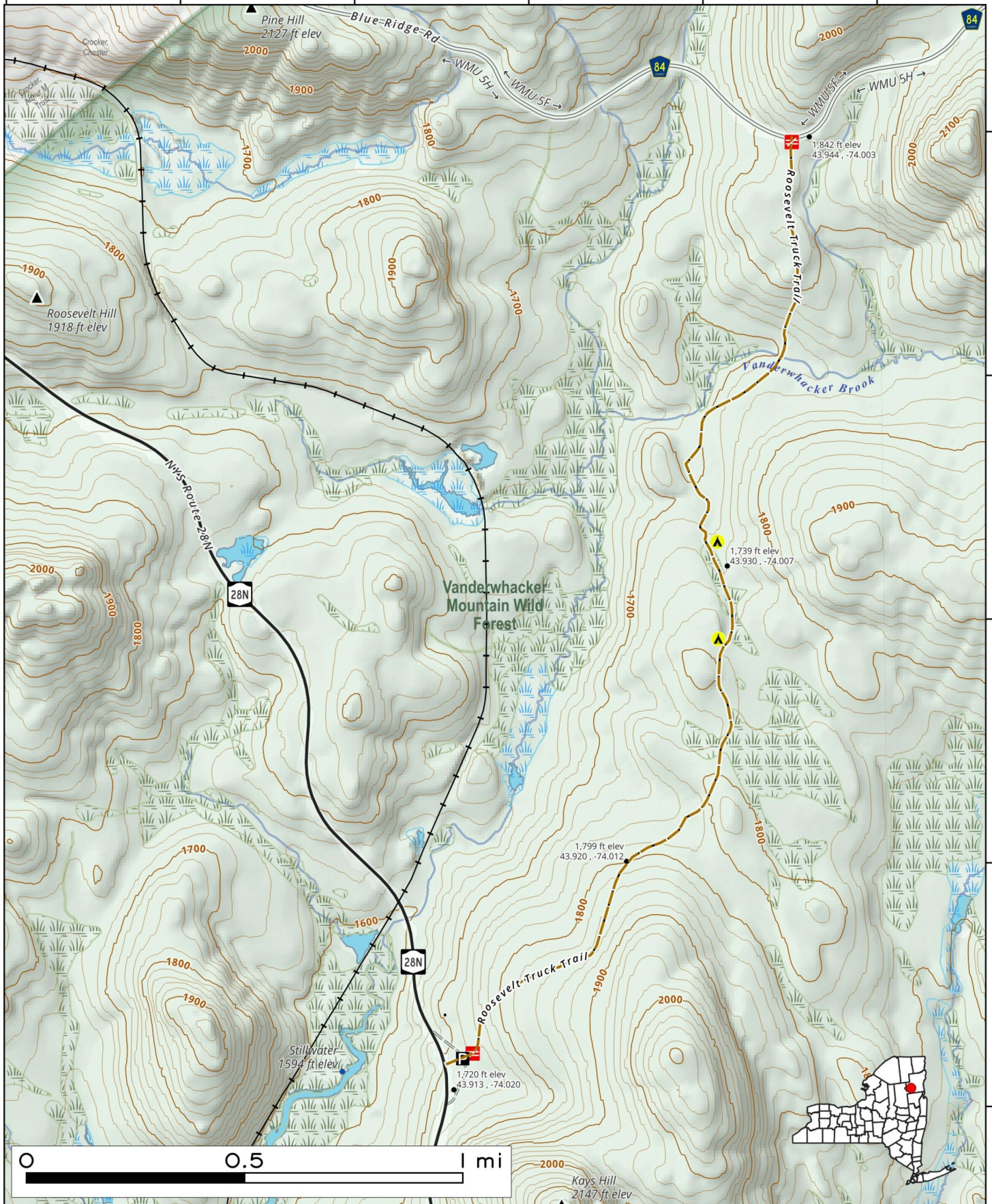


The Roosevelt Truck Trail is a 2.6-mile trail in New York's Adirondack Park, known for its beautiful boreal forest and excellent birdwatching opportunities. The unpaved path is relatively flat and open to hikers, bikers, cross-country skiers, and snowshoers. It features two accessible campsites in a remote section of Adirondack Wilderness.



Map created by Andy Arthur on 11/25/2025 in QGIS 3.44.4-Solothurn. Contains NYS GIS and DEC data with additional campsites added by Andy. More maps at [andyarthur.org](http://andyarthur.org).

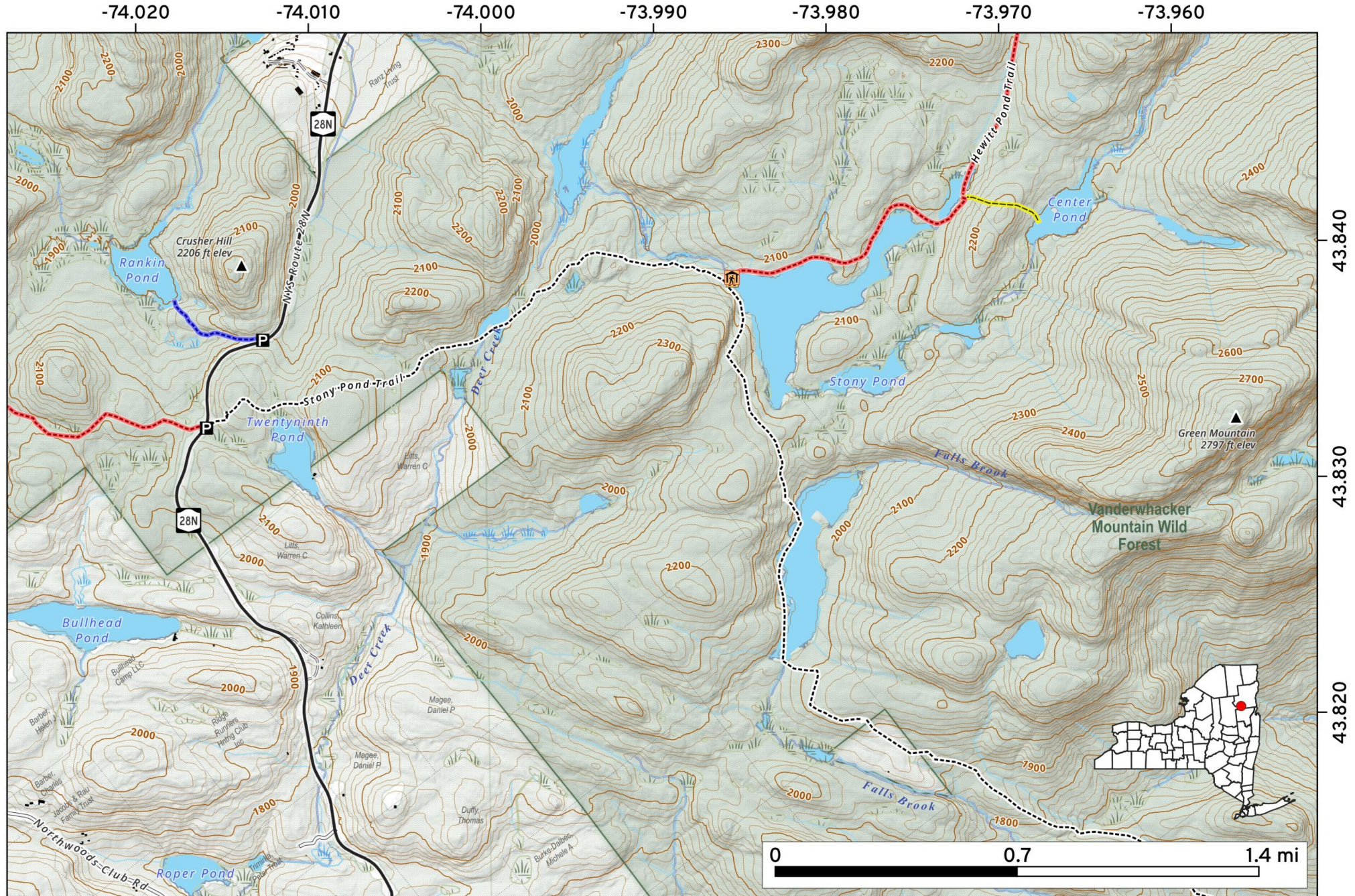
-74.04      -74.03      -74.02      -74.02      -74.01      -74.00



The **Stony Pond Trail** is a 2.1-mile hike to a scenic wilderness pond featuring a lean-to that boasts excellent views of Green Mountain. Very gentle, with roughly 300 to 400 feet of total rolling elevation change. Some hikers extend it to 5.6 miles round-trip by continuing further down the shore past Little Sherman Pond.



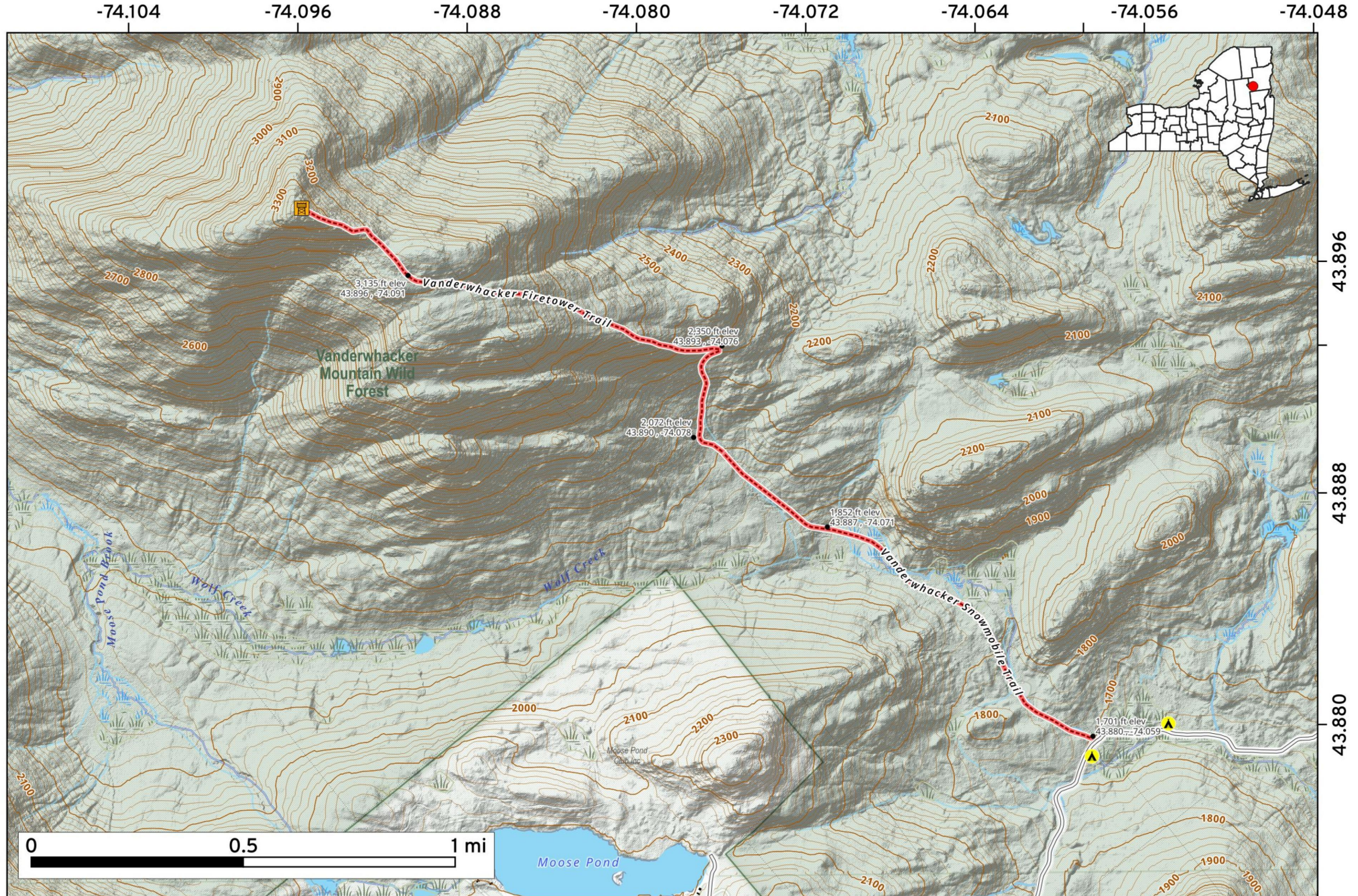
Map created by Andy Arthur on 6/5/2026 in QGIS 3.44.10-Solothurn. Data: NYS GIS and NYS DEC. More at [andyarthur.org](http://andyarthur.org)



The **Vanderwhacker Mountain Trail** is a 5.2-mile round-trip hike. The first half is a gentle, scenic walk through hardwood forests and over streams. The second half shifts into a steep, rugged climb gaining 1,700 feet of elevation. At the 3,386-foot summit, a historic 35-foot fire tower stands, offering sweeping, panoramic views of the High Peaks region and surrounding wilderness.



Map created by Andy Arthur on 6/4/2026 in QGIS 3.44.10-Solothurn. Data: NYS GIS and NYS DEC. More at [andyarthur.org](http://andyarthur.org)



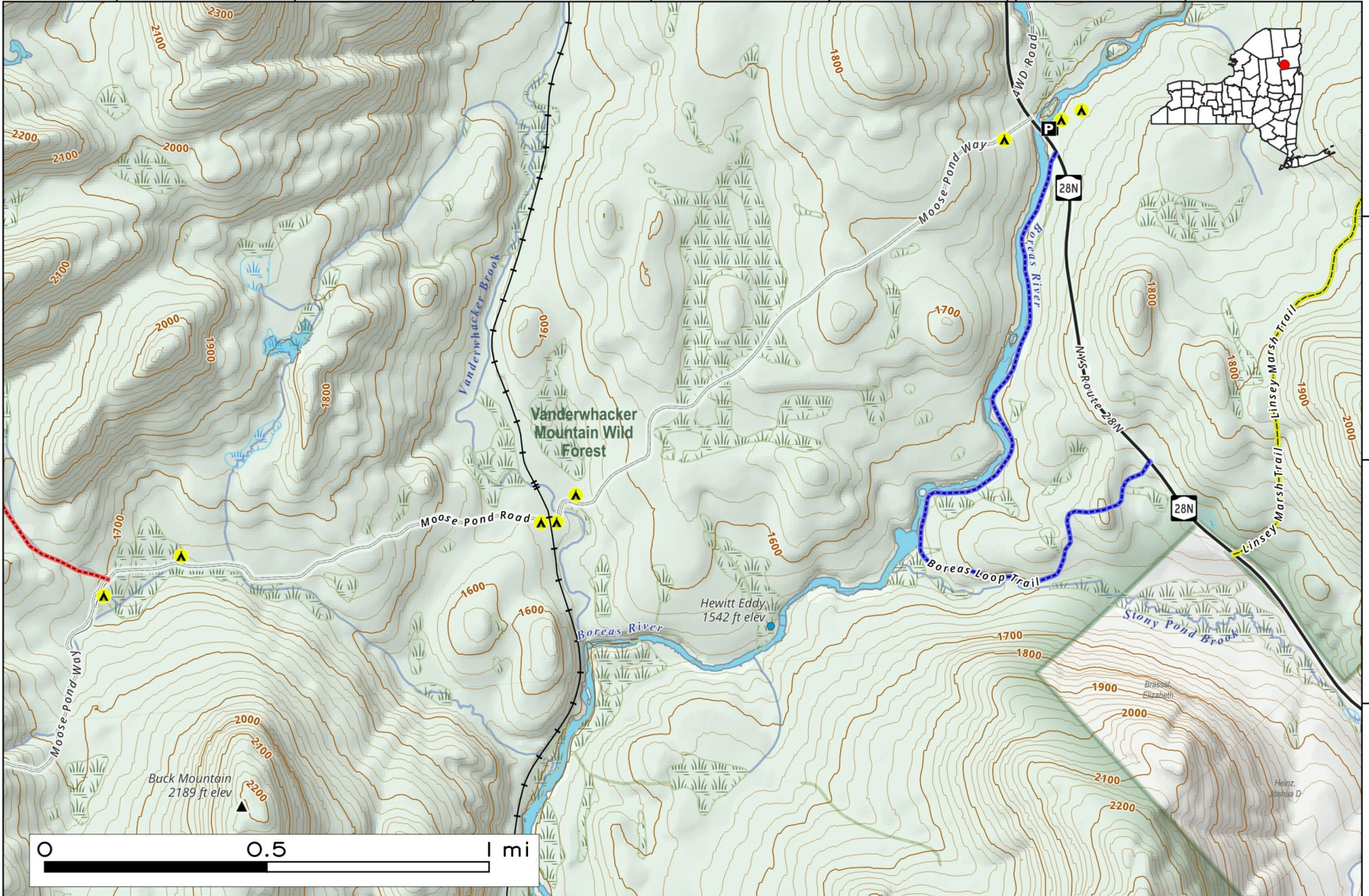
# Moose Pond Road Campsites

Primitive campsites along a seasonal use only Moose Pond Road (Vanderwhacker Road) on the way to the Vanderwhacker Tower. This road is not gated but can be very soft during the spring months.

Map created by Andy Arthur on 11/20/2025 in QGIS 3.44.4-Solothurn. Contains NYS GIS and DEC data with additional campsites added by Andy. More maps at [andyarthur.org](http://andyarthur.org).



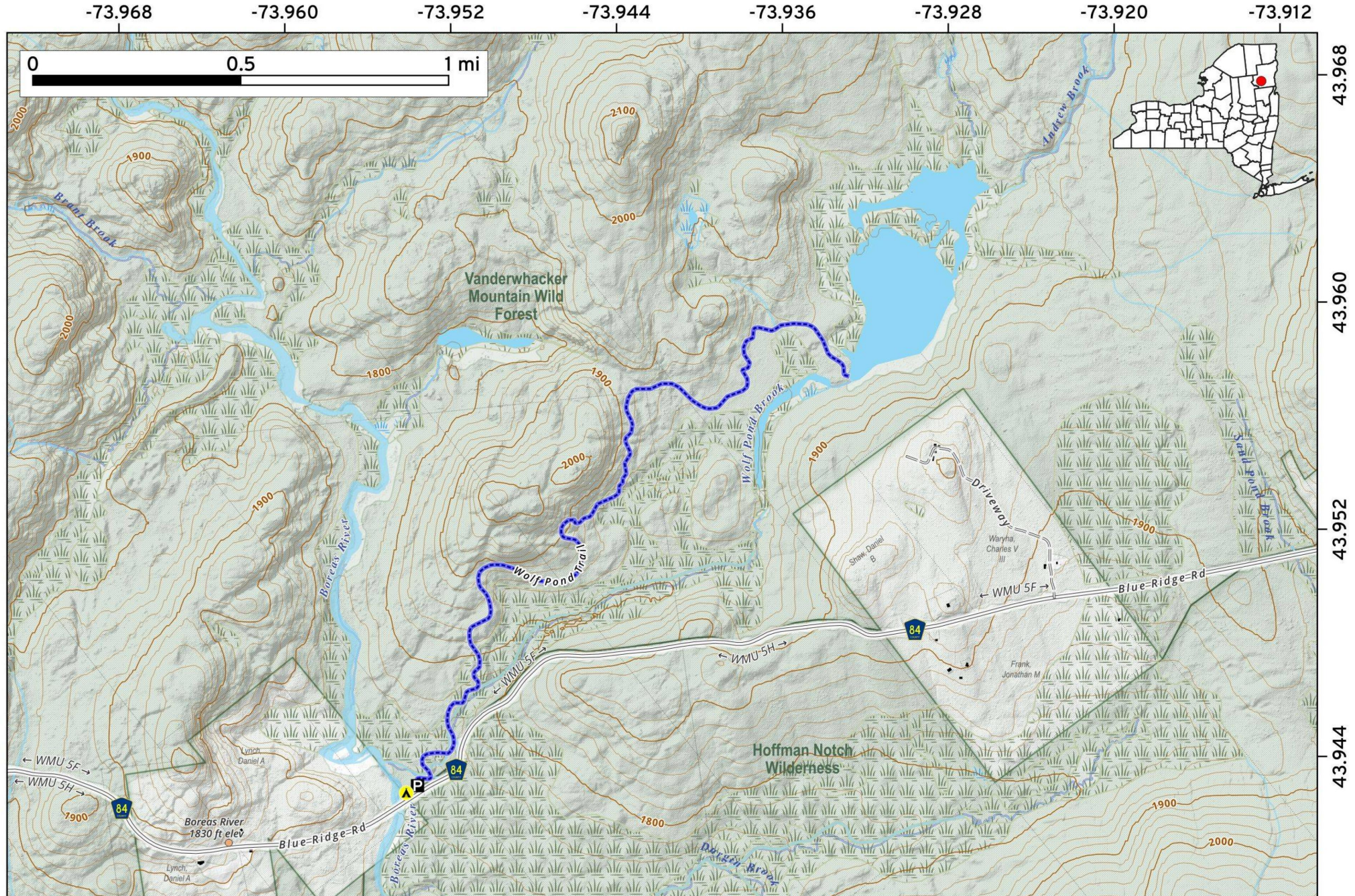
-74.056      -74.048      -74.040      -74.032      -74.024      -74.016      -74.008



The **Wolf Pond Trail** offers a relatively easy trek through the Adirondack wilderness. Spanning roughly 2.3 miles one-way, the path winds through dense hardwood forests and across small streams. The highlight is a beautiful shoreline view of Wolf Pond, framed by the rugged High Peaks on the horizon. A lean-to provides a perfect spot for resting or camping.



Map created by Andy Arthur on 5/1/2026 in QGIS 3.44.9-Solothurn. Data: NYS GIS and NYS DEC. More at [andyarthur.org](http://andyarthur.org)



0 0.2 0.4 0.6 mi



Wolf Pond Trail

Map by Andy Arthur  
5/5/2026