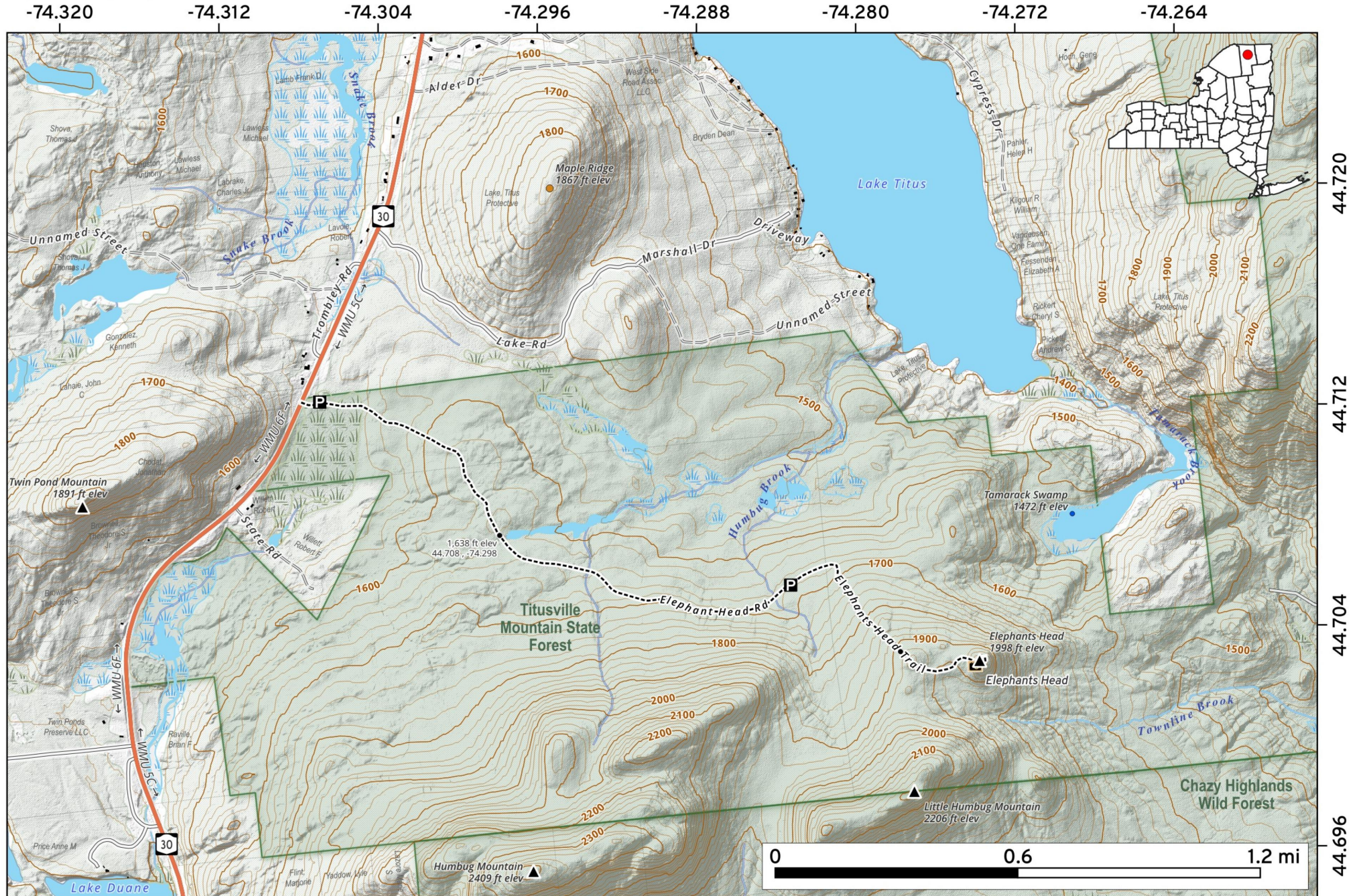


Located in Titusville Mountain State Forest near Malone, NY, the **Elephant's Head Trail** is an easy-to-moderate 0.8-mile hike (one-way). It features a 320-foot elevation gain and a summit staircase. The peak offers panoramic views of Lake Titus and the northern Adirondack region. When the seasonal access road (Elephant Head Road) is closed, you must park at the gate near State Route 30 and walk the unpaved road to the trailhead. Additional Road Walk: 1.5 miles each way. Total Round-Trip Distance: Approximately 4.2 to 4.6 miles.



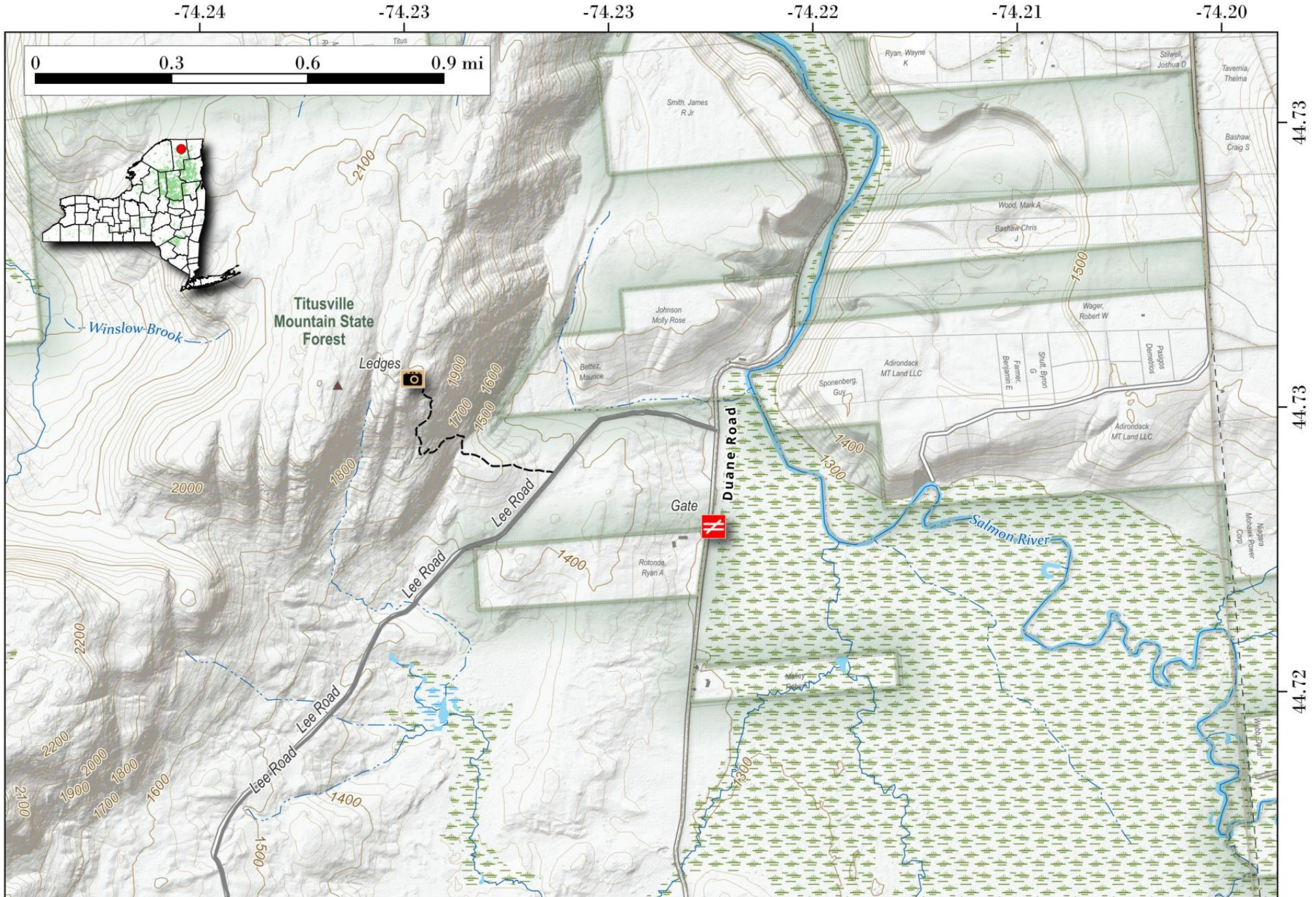
Map created by Andy Arthur on 2/27/2026 in QGIS 3.44.7-Solothurn. Data: NYS GIS and NYS DEC. More at [andyarthur.org](http://andyarthur.org).



# Titusville Ledges Trail.

A 6/10th a mile trail from Lee Road to a ledge overlooking the Salmon River and many of the peaks of the Northern Adirondacks. There is a 700 foot elevation gain. The trailhead is 4/10th mile west of Duane Road.

Map created by Andy Arthur on 11/1/2024 in QGIS 3.34.11-Prizren. Contains US Forest Service Base Map with additional campsites added by Andy. More maps at [andyarthur.org](http://andyarthur.org).

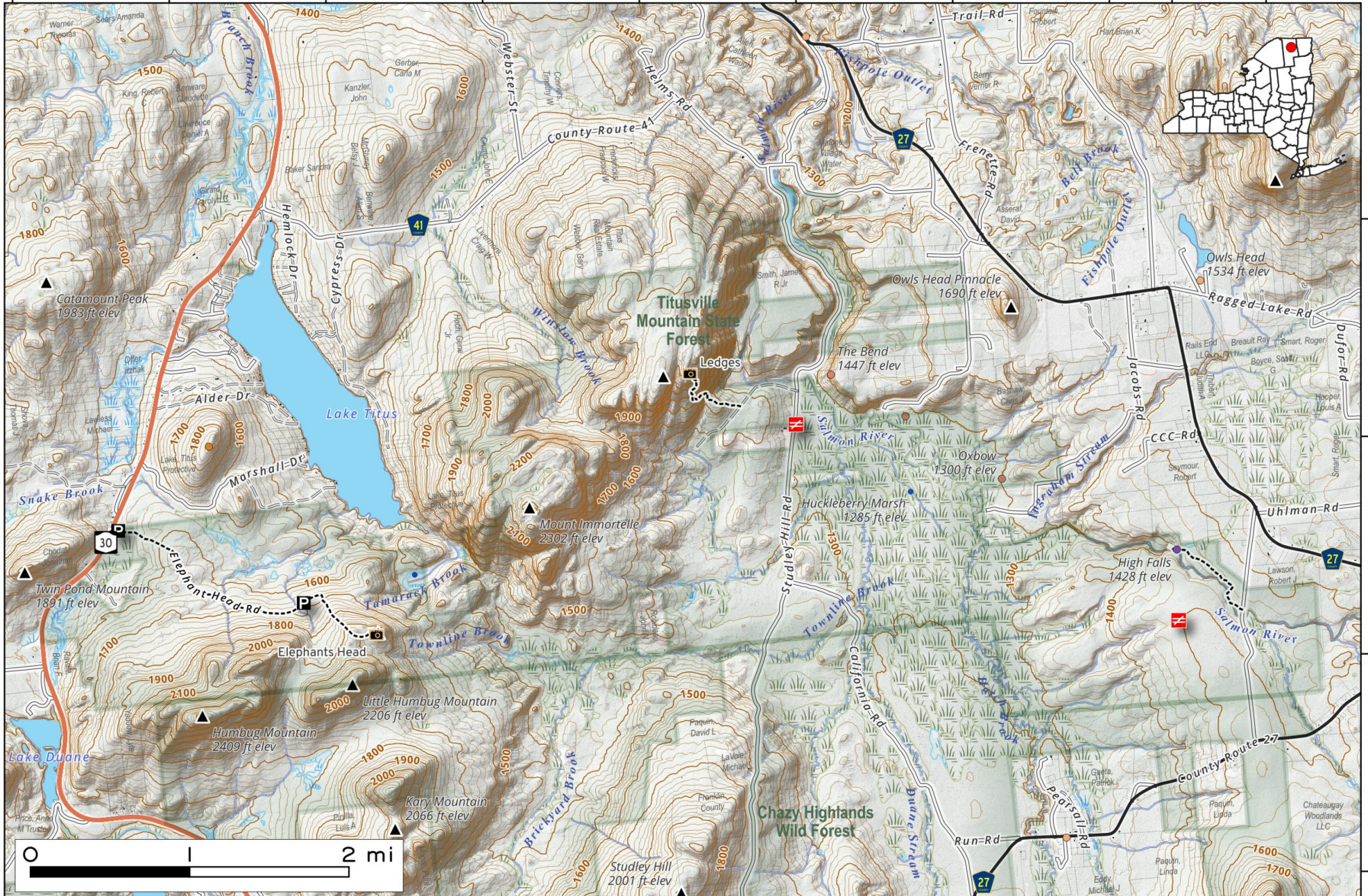


The 7,482 acre **Titusville Mountain State Forest** is located just outside of the Adirondack Park in the town of Owls Head. Notable views include Elephant Head above Lake Titus and the Ledges.

Map created by Andy Arthur on 12/19/2025 in QGIS 3.44.5-Solothurn. Contains NYS GIS and DEC data with additional campsites added by Andy. More maps at [andyarthur.org](http://andyarthur.org).



74.320      -74.300      -74.280      -74.260      -74.240      -74.220      -74.200      -74.180      -74.160



44.740  
44.720  
44.700  
44.680