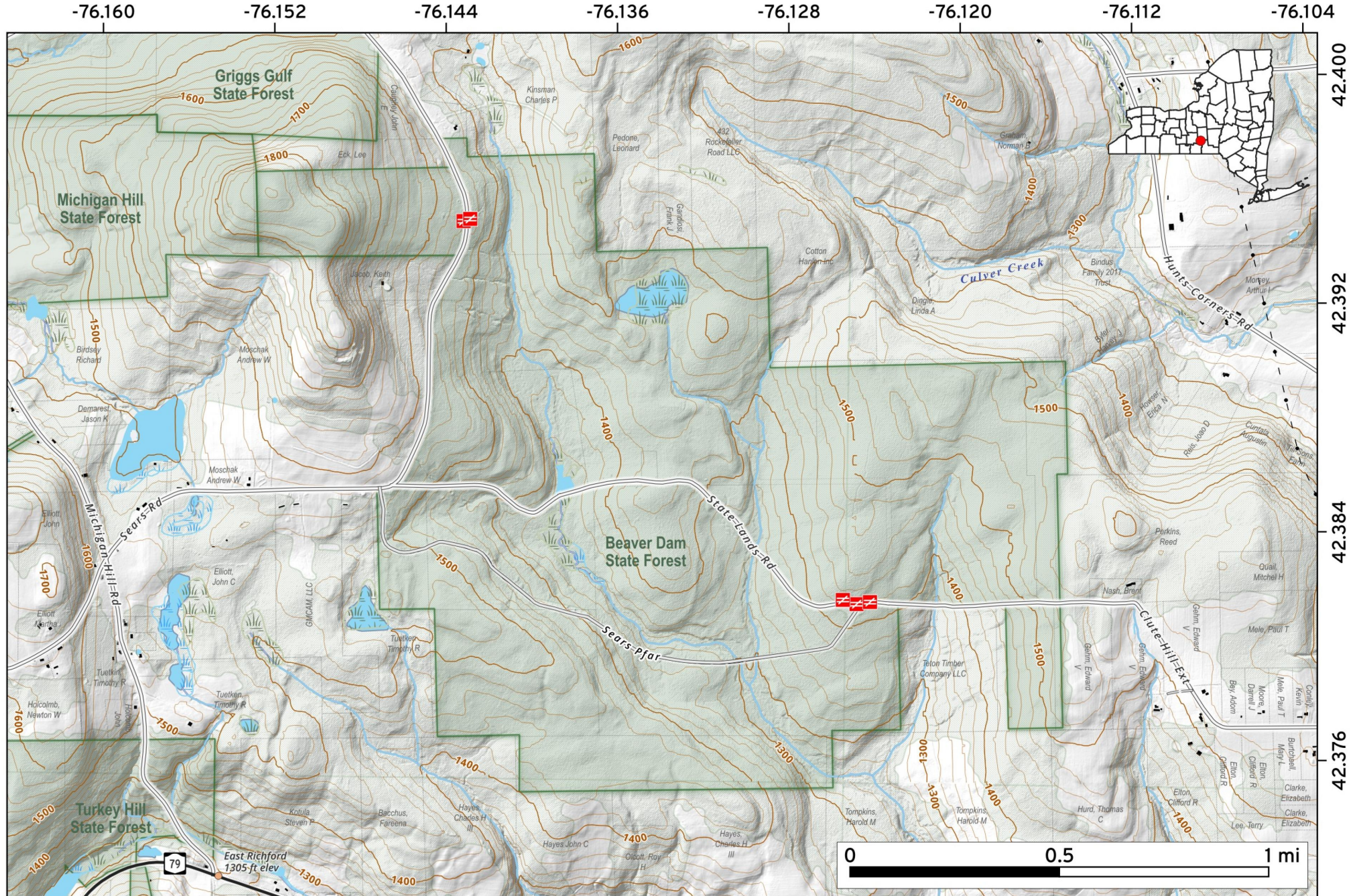


Beaver Dam State Forest spans 1,151 acres in the Town of Richford. This primitive, wild landscape features a winding brook where beavers, songbirds, and salamanders thrive. Visitors enjoy hunting, snowmobiling, and nature viewing, with a 1.5-mile access road suitable for hiking, biking, and horseback riding.



Map created by Andy Arthur on 2/23/2026 in QGIS 3.44.7-Solothurn. Data: NYS GIS and NYS DEC. More at andyarthur.org.



Robinson Hollow State Forest.

1,968 acres in Richford outside of Ithaca. Crossed by the Finger Lakes trail with several designated campsites.

Map created by Andy Arthur on 12/11/2024 in QGIS 3.34.12-Prizren. Contains US Forest Service Base Map, NYS DEC Ddata with additional campsites added by Andy. More maps at andyarthur.org.

