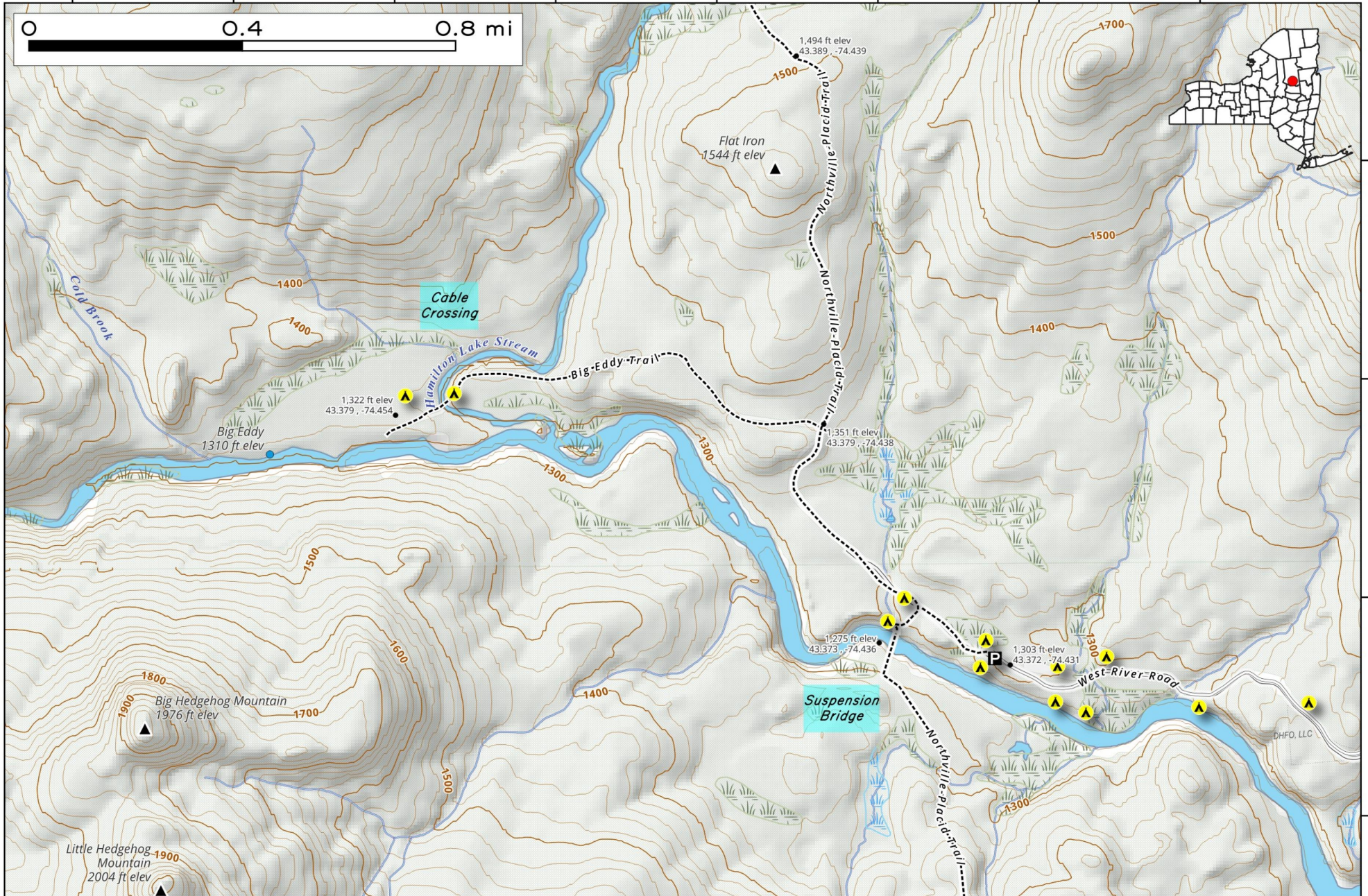
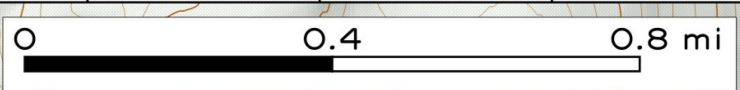


Big Eddy Trail. Spur off the Northville Placid Trail. From the West River Road parking area at White House, go 2/10th of a mile to Northville Placid Trail, head north (bear right), then proceed 1/2 mile over a small ridge to the Big Eddy Trail. The Big Eddy Trail goes 8/10th of a mile to a cable crossing over Hamilton Lake Stream and two designated campsites.



Map created by Andy Arthur on 1/6/2026 in QGIS 3.44.6-Solothurn. Contains NYS GIS and DEC data with additional campsites added by Andy. More maps at andyarthur.org.

-74.466 -74.460 -74.454 -74.448 -74.442 -74.436 -74.430 -74.424



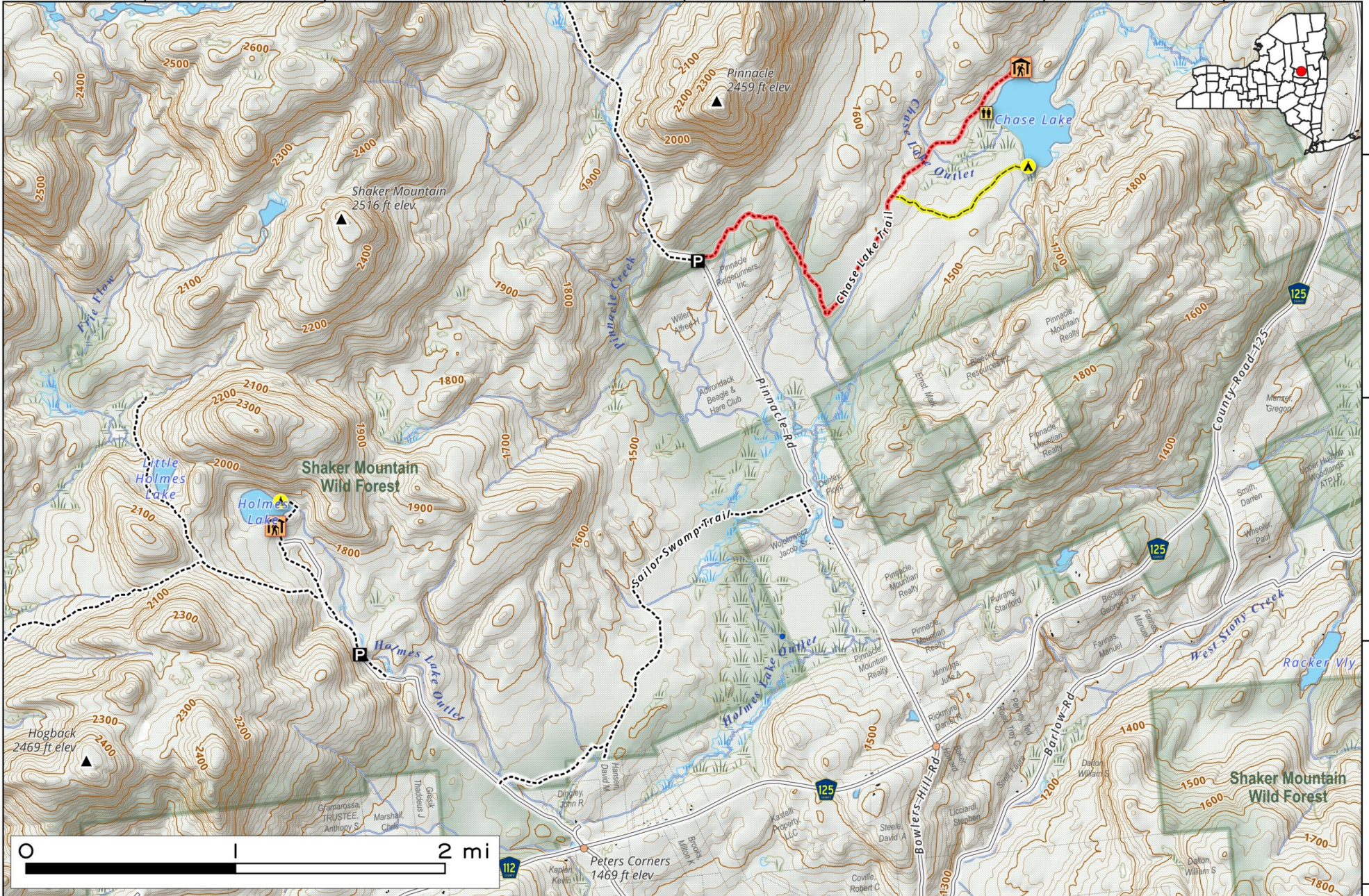
43.386
43.380
43.374
43.368

Chase And Holmes Lake Trails. Chase Lake Trail is a 5.3 mile moderately trafficked out and back trail located near Gloversville, New York that features a lake and is rated as moderate. Holmes Lake is a 4.2 mile lightly trafficked out and back trail located near Bleeker.

Map created by Andy Arthur on 1/13/2026 in QGIS 3.44.6-Solothurn. Contains NYS GIS and DEC data with additional campsites added by Andy. More maps at andyarthur.org.



-74.443 -74.426 -74.409 -74.392 -74.375 -74.358 -74.341

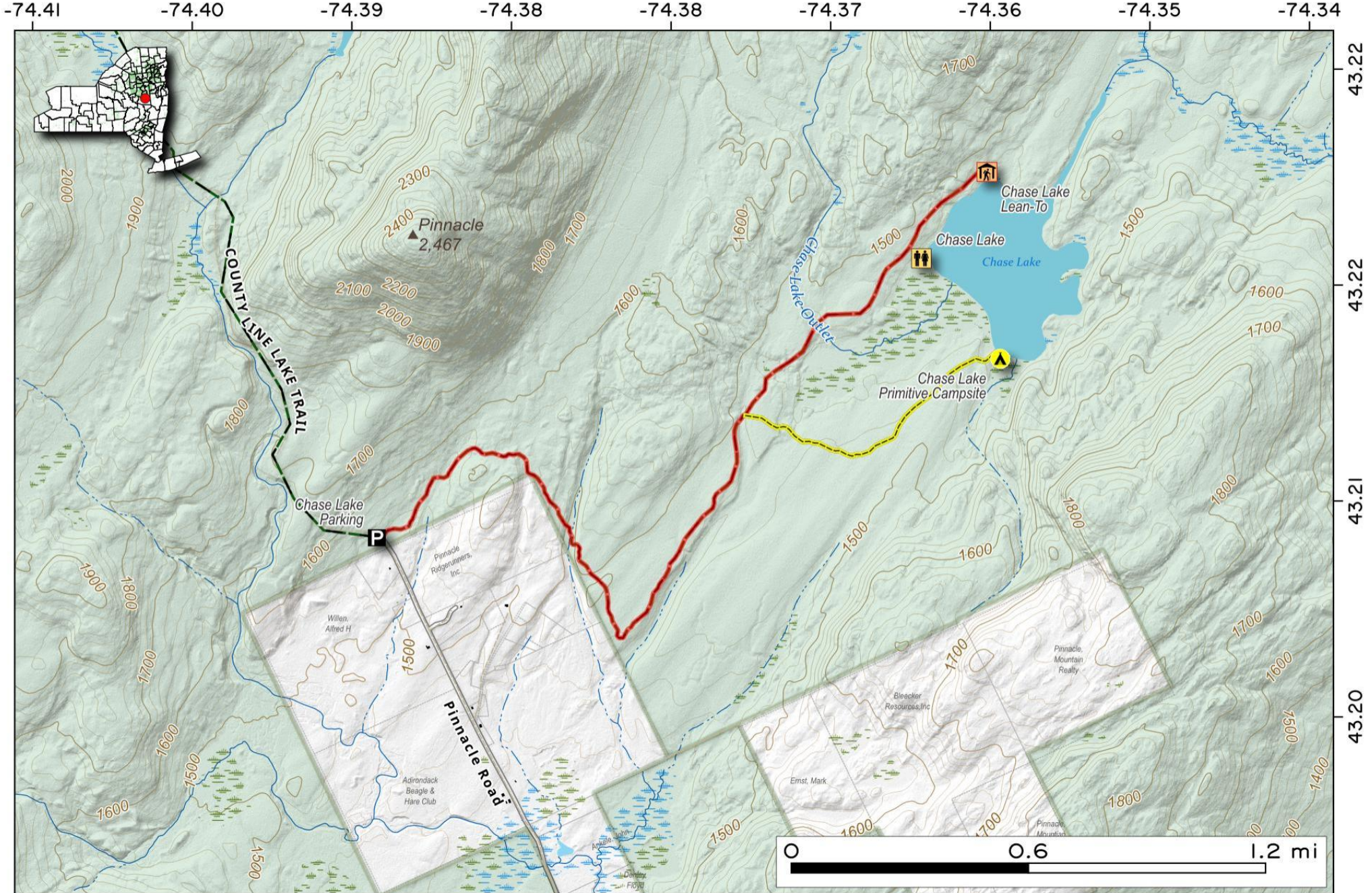


43.214
43.197
43.180
43.163

Chase Lake. A remote 70 acre lake that can be accessed via Pinnacle Road in Bleecker, which is between Caroga Lake and Bensen on County Route 125. It is a 2.5 mile back along a red-blazed trail, with a yellow-spur to the tent site on the southern end of the lake.

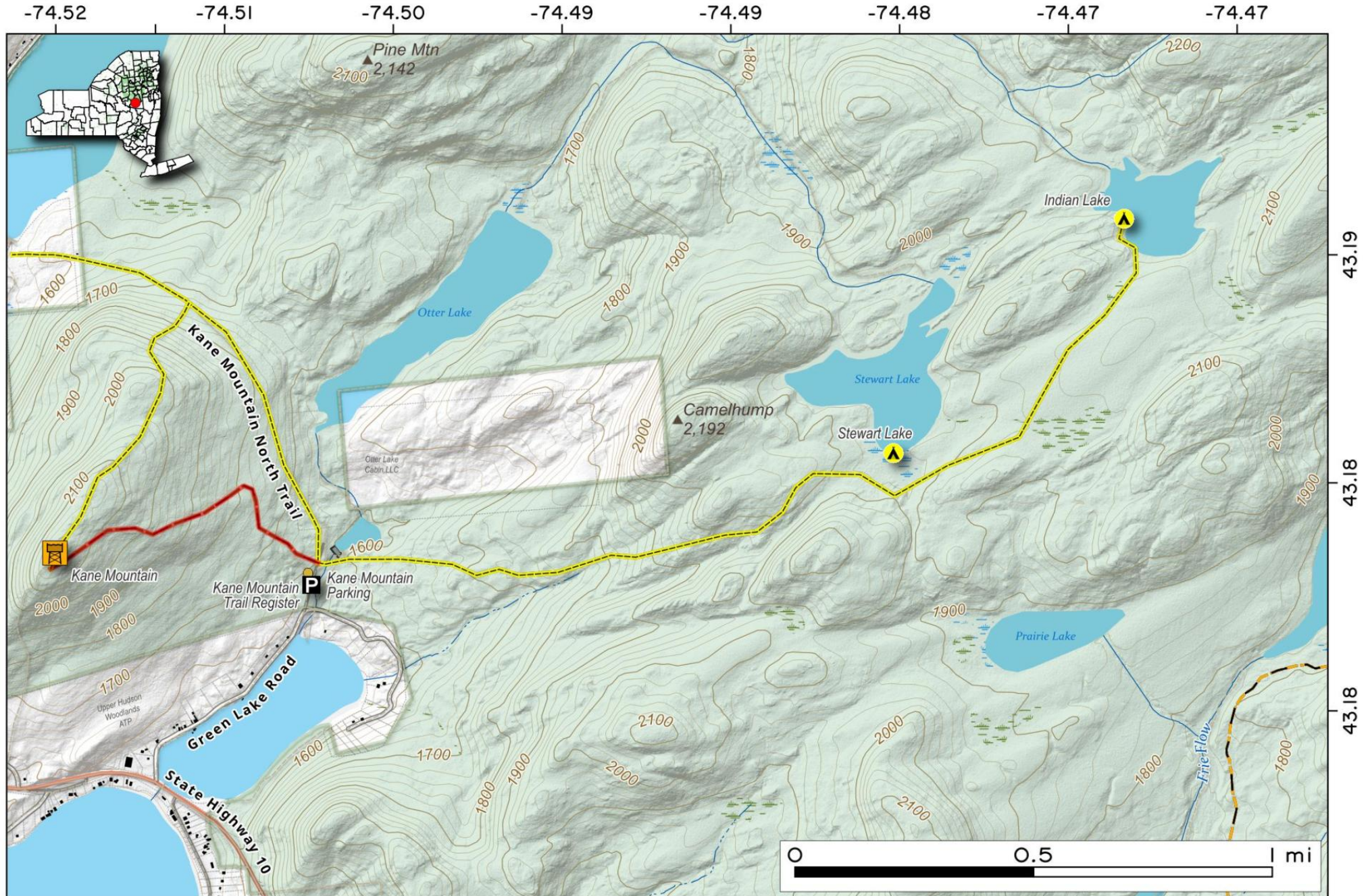


Map created by Andy Arthur on 3/31/2025 in QGIS 3.34.15-Prizren. Contains US Forest Service Base Map, NYS DEC data with additional campsites added by Andy. More maps at andyarthur.org.



Indian Lake Trail. The 2.5 mile Indian Lake Trail from the Kane Mountain Parking Area takes you past Stewart Lake to Indian Lake. A nice quiet trail often done in combination with hiking up the Kane Mountain Firetower.

Map created by Andy Arthur on 3/31/2025 in QGIS 3.34.15-Prizren. Contains US Forest Service Base Map, NYS DEC data with additional campsites added by Andy. More maps at andyarthur.org.



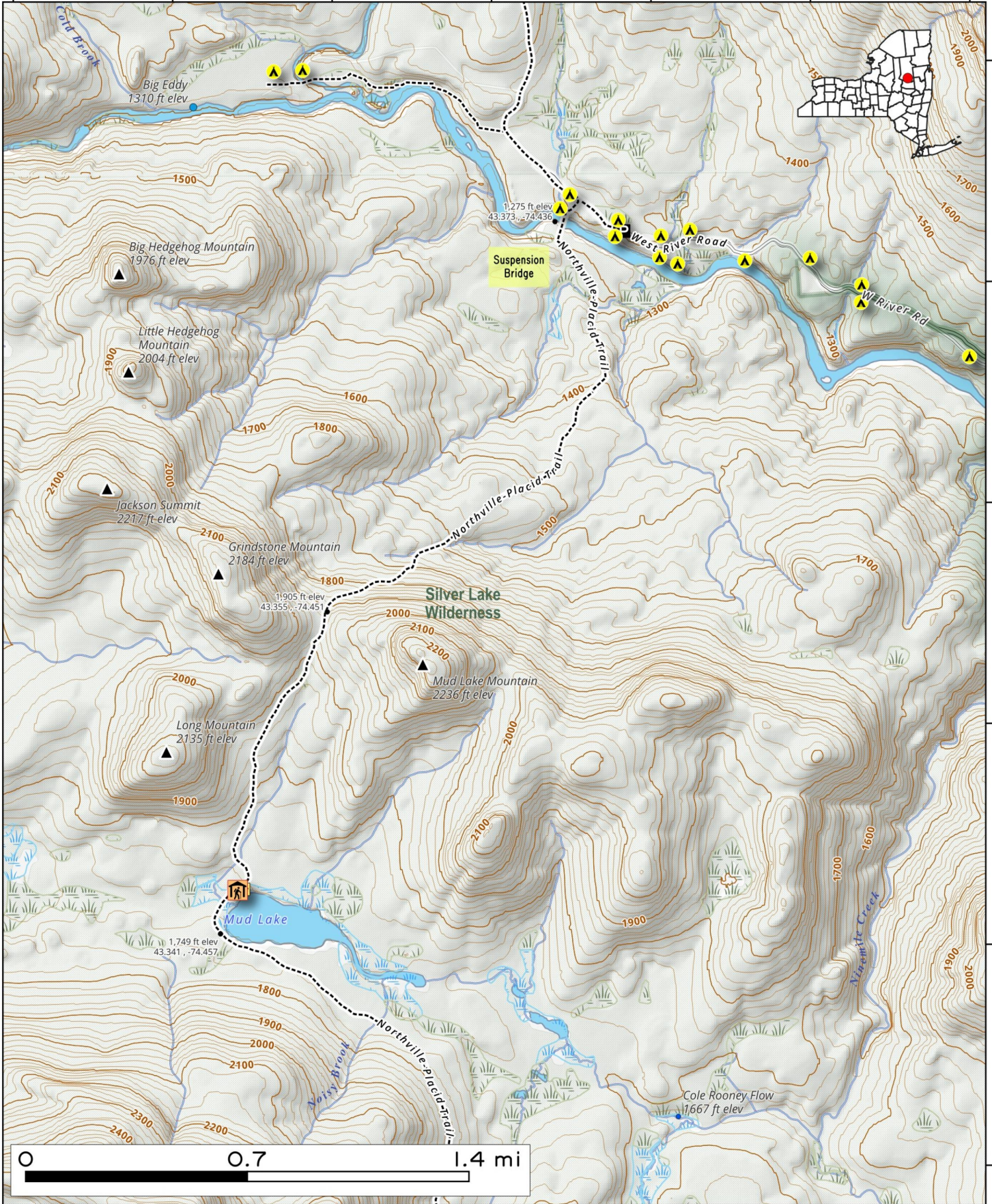
Mud Lake to White House on the Northville-Placid Trail.

Mud Lake is 3 miles south of Whitehouse Suspension Bridge over the West Scanadaga River. White House parking/camping area is open from June - December.

Map created by Andy Arthur on 1/6/2026 in QGIS 3.44.6-Solothurn. Contains NYS GIS and DEC data with additional campsites added by Andy. More maps at andyarthur.org.



-74.47 -74.46 -74.45 -74.44 -74.43 -74.42 -74.41



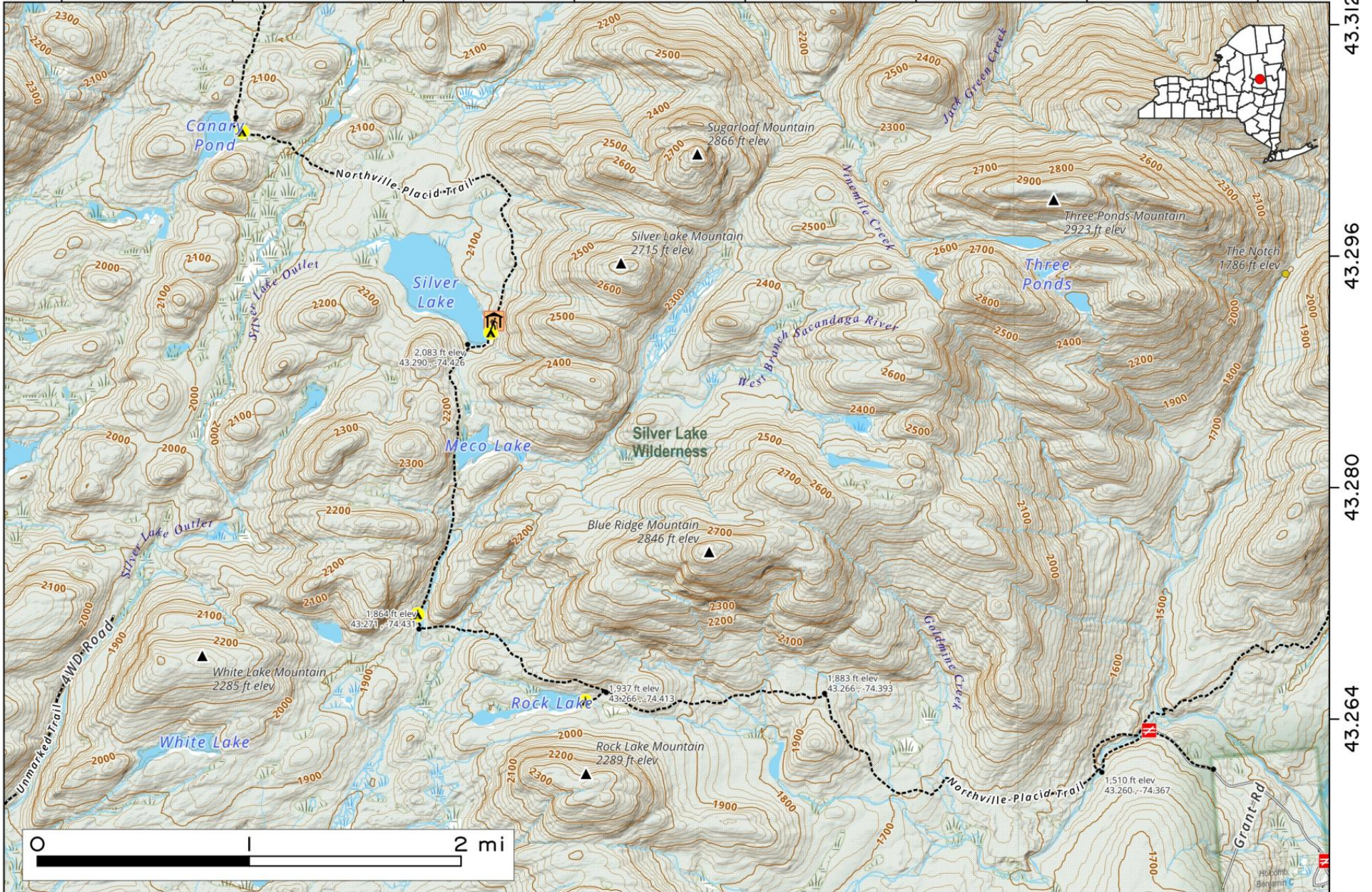
43.38
43.37
43.36
43.35
43.34
43.33

Northville-Placid Trail to Canary Pond. This map shows the NPT Trail from Godfried Road Trailhead in Beacon to Canary Pond, around 6 miles back to Rock Lake, 2 miles to Mecco Lake, a 3/4 mile to Silver Lake and 2 miles to Canray Lake.

Map created by Andy Arthur on 10/3/2025 in QGIS 3.44.3-Solothurn. Contains NYS GIS and DEC data with additional campsites added by Andy. More maps at andyarthur.org.



-74.464 -74.448 -74.432 -74.416 -74.400 -74.384 -74.368 -74.352



NPT Trail - Northville to West Stony Creek. Five mile hike from Collins-Gifford Valley Road to the West Stony Creek on the first part of the Northville-Placid Trail. This section passes by Mud Lake, winding through a valey before descending to the bridge that crosses the West Stony Creek, where a lean-to can be found.



Map created by Andy Arthur on 1/14/2026 in QGIS 3.44.6-Solothurn. Contains NYS GIS and DEC data with additional campsites added by Andy. More maps at andyarthur.org.

-74.270

-74.260

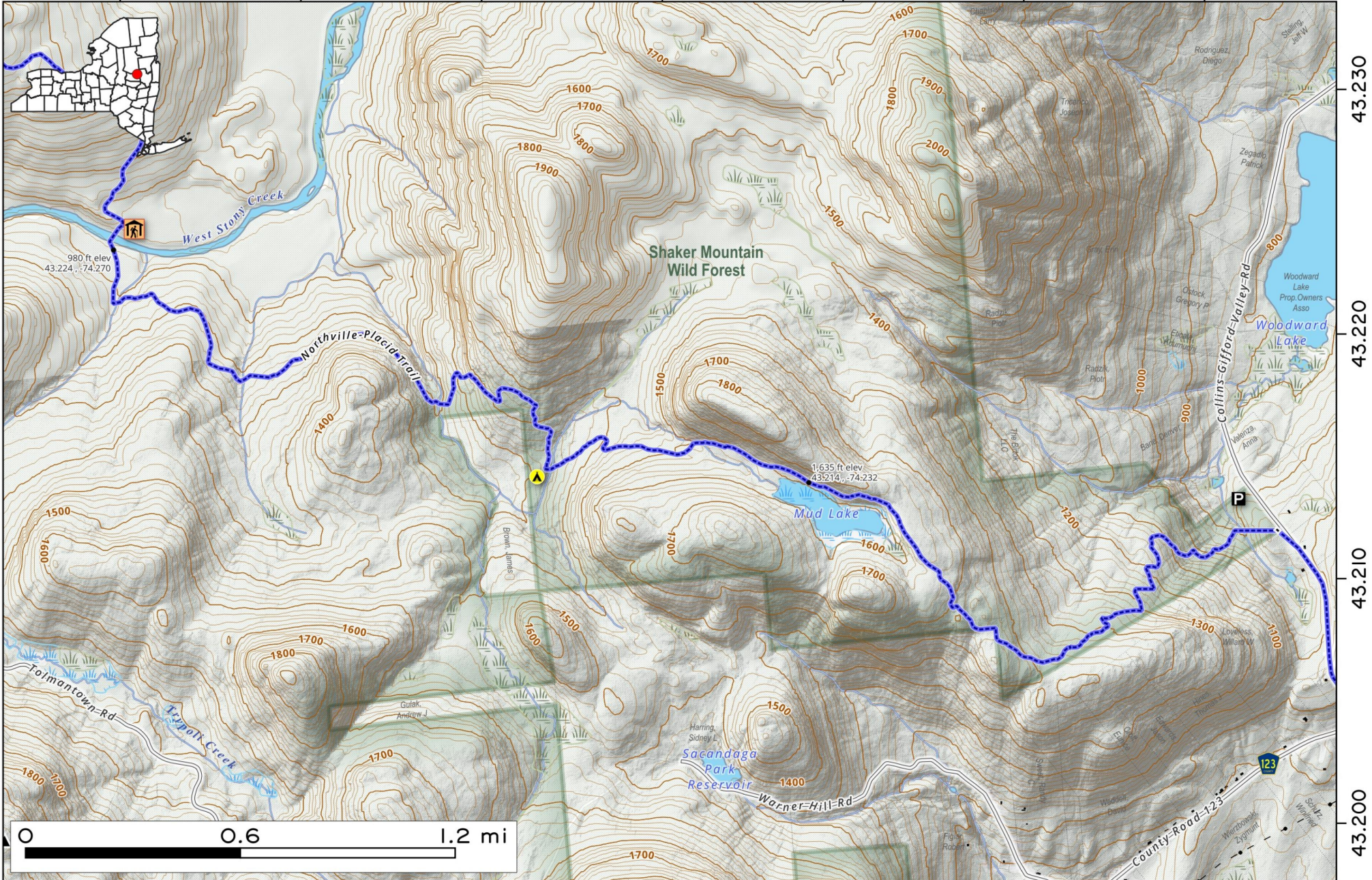
-74.250

-74.240

-74.230

-74.220

-74.210



43.230

43.220

43.210

43.200

