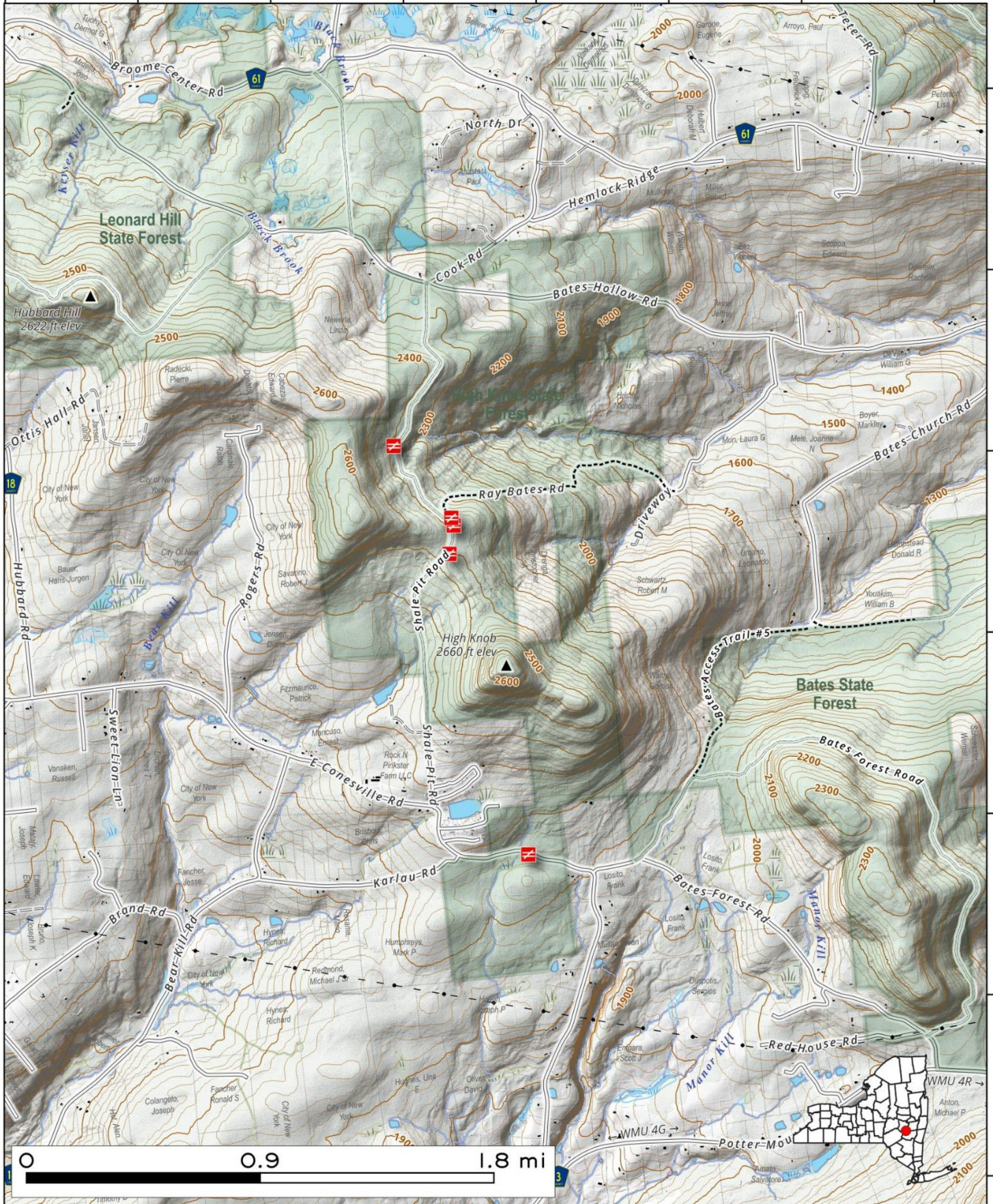


The High Point State Forest consists of lands around High Peak in the hills north of Catskills in Schoharie County and is near Leonard Hill and Bates Hill State Forests. .

Map created by Andy Arthur on 12/3/2025 in QGIS 3.44.5-Solothurn. Contains NYS GIS and DEC data with additional campsites added by Andy. More maps at [andyarthur.org](http://andyarthur.org).



-74.35      -74.34      -74.33      -74.32      -74.31      -74.30      -74.29      -74.28



42.46  
42.45  
42.44  
42.43  
42.42  
42.41  
42.40

# R. Milton Hick State Forest. 1,395 acres outside of Roseboom, south of NY 165 on the hills as your heading west towards



Map created by Andy Arthur on 1/7/2026 in QGIS 3.44.6-Solothurn. Contains NYS GIS and DEC data with additional campsites added by Andy. More maps at [andyarthur.org](http://andyarthur.org).

