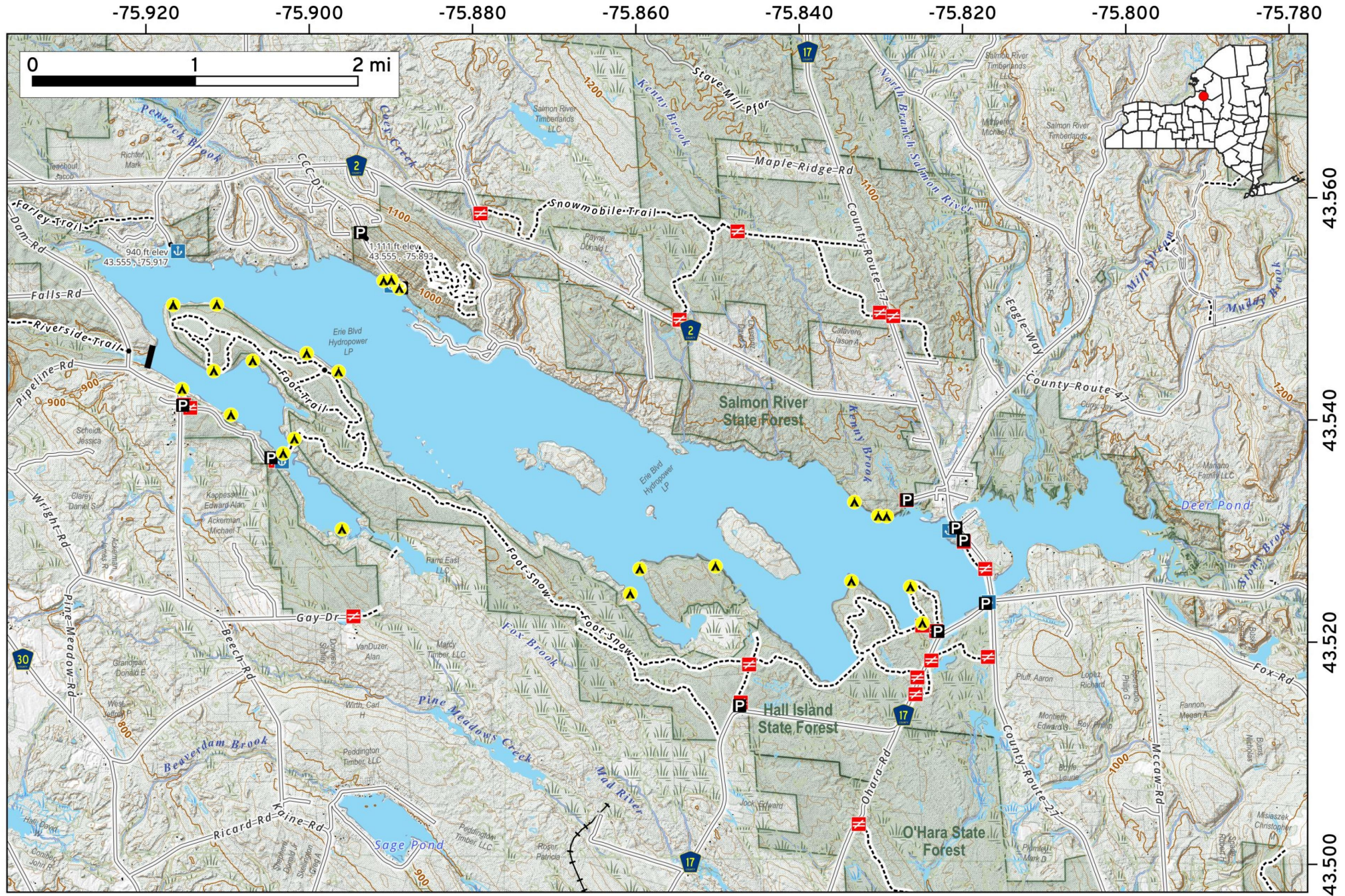


Salmon River Reservoir. Overview of campsites, trails, boat launches around the reservoir.



Map created by Andy Arthur on 5/29/2026 in QGIS 3.44.10-Solothurn. Data: NYS GIS and NYS DEC. More at andyarthur.org

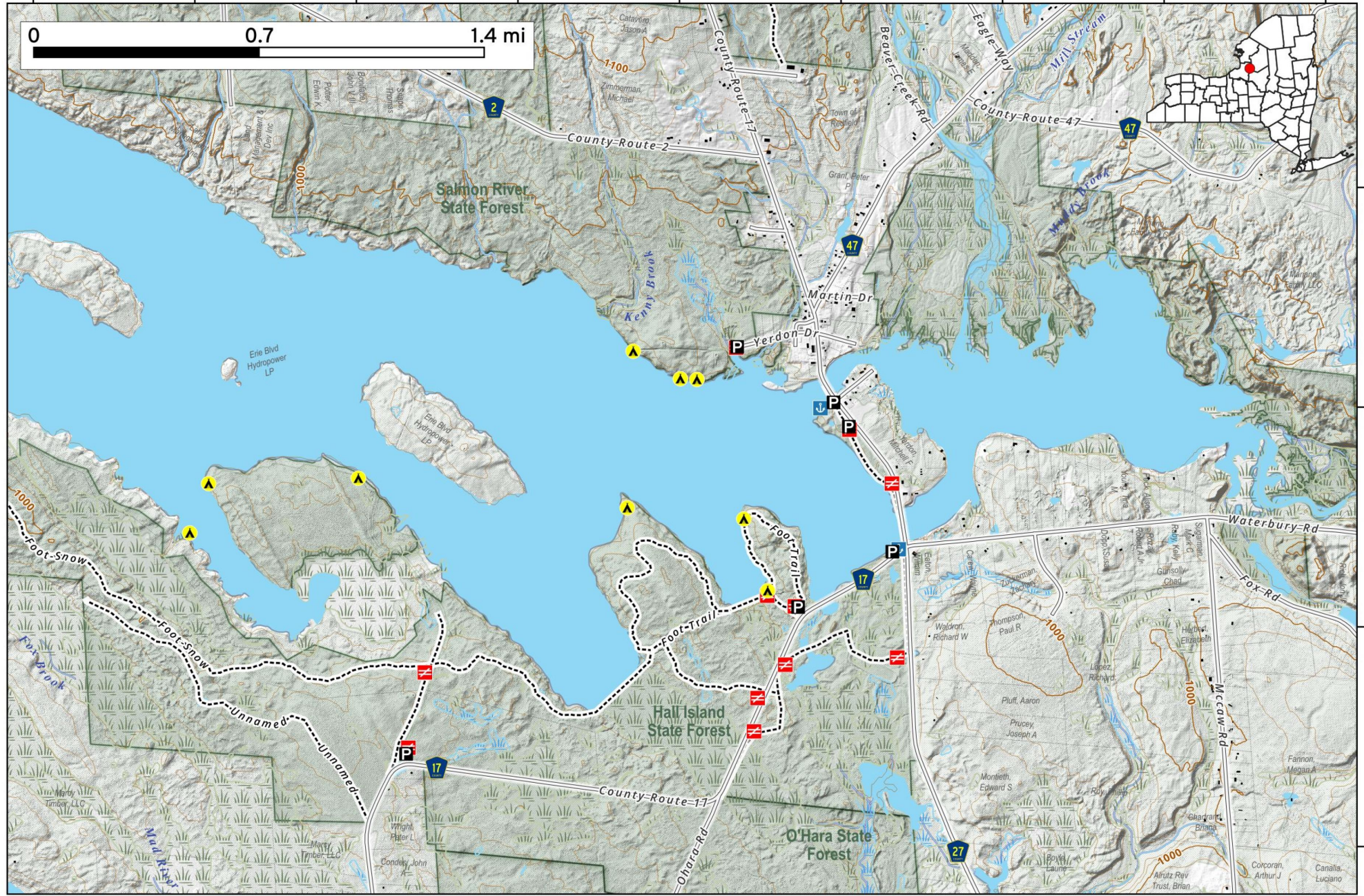


Eastern Portion of the **Salmon River Reservoir**. Campsites, trails, boat launches around Redfield along the eastern most portion of the Salmon River Reservoir.

Map created by Andy Arthur on 5/29/2026 in QGIS 3.44.10-Solothurn. Data: NYS GIS and NYS DEC. More at andyarthur.org



-75.870 -75.860 -75.850 -75.840 -75.830 -75.820 -75.810 -75.800 -75.790



43.540

43.530

43.520

43.510

Western Portion of the Salmon River Reservoir. Campsites, trails, boat launches around Redfield along the western most portion of the Salmon River Reservoir.

Map created by Andy Arthur on 5/29/2026 in QGIS 3.44.10-Solothurn. Data: NYS GIS and NYS DEC. More at andyarthur.org



-75.940 -75.930 -75.920 -75.910 -75.900 -75.890 -75.880 -75.870

