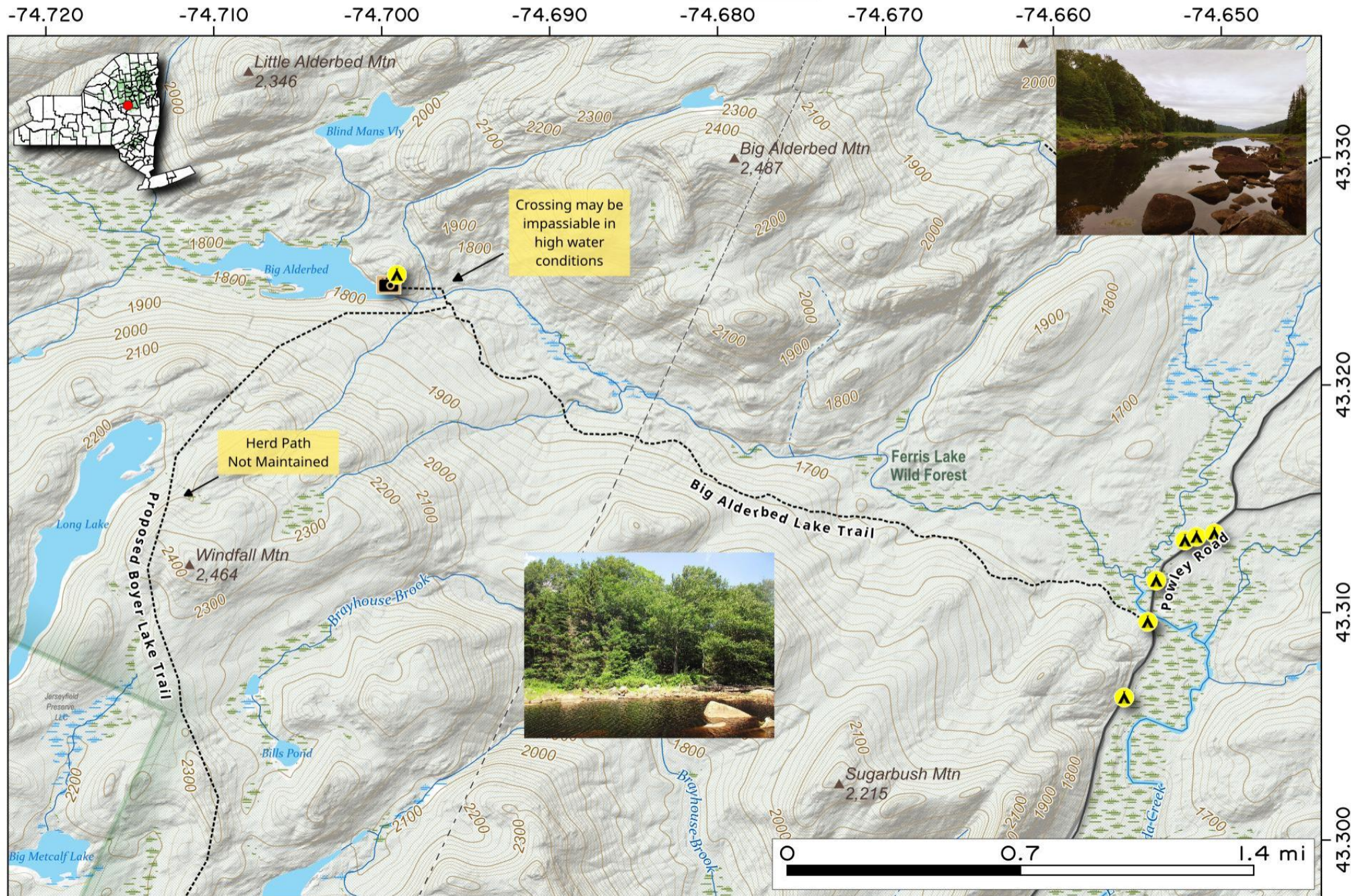


**Big Alderbed.** 2½ mile trail back to a scenic lake held back by an old dam. The trail is generally fairly easy to follow to where it crosses the East Canada Creek a half mile before the Big Alderbed though some of the markers are hard to find. Beyond the low-water creek crossing, the trail is overgrown and harder to follow, some follow Proposed Boyer Lake Herd Path (unmaintained) to the south side of lake during high water conditions, however there is no maintained campsite on that side of lake.



Map created by Andy Arthur on 6/20/2025 in QGIS 3.34.15-Prizren. Contains US Forest Service Base Map, NYS DEC data with additional campsites added by Andy. More maps at [andyarthur.org](http://andyarthur.org).



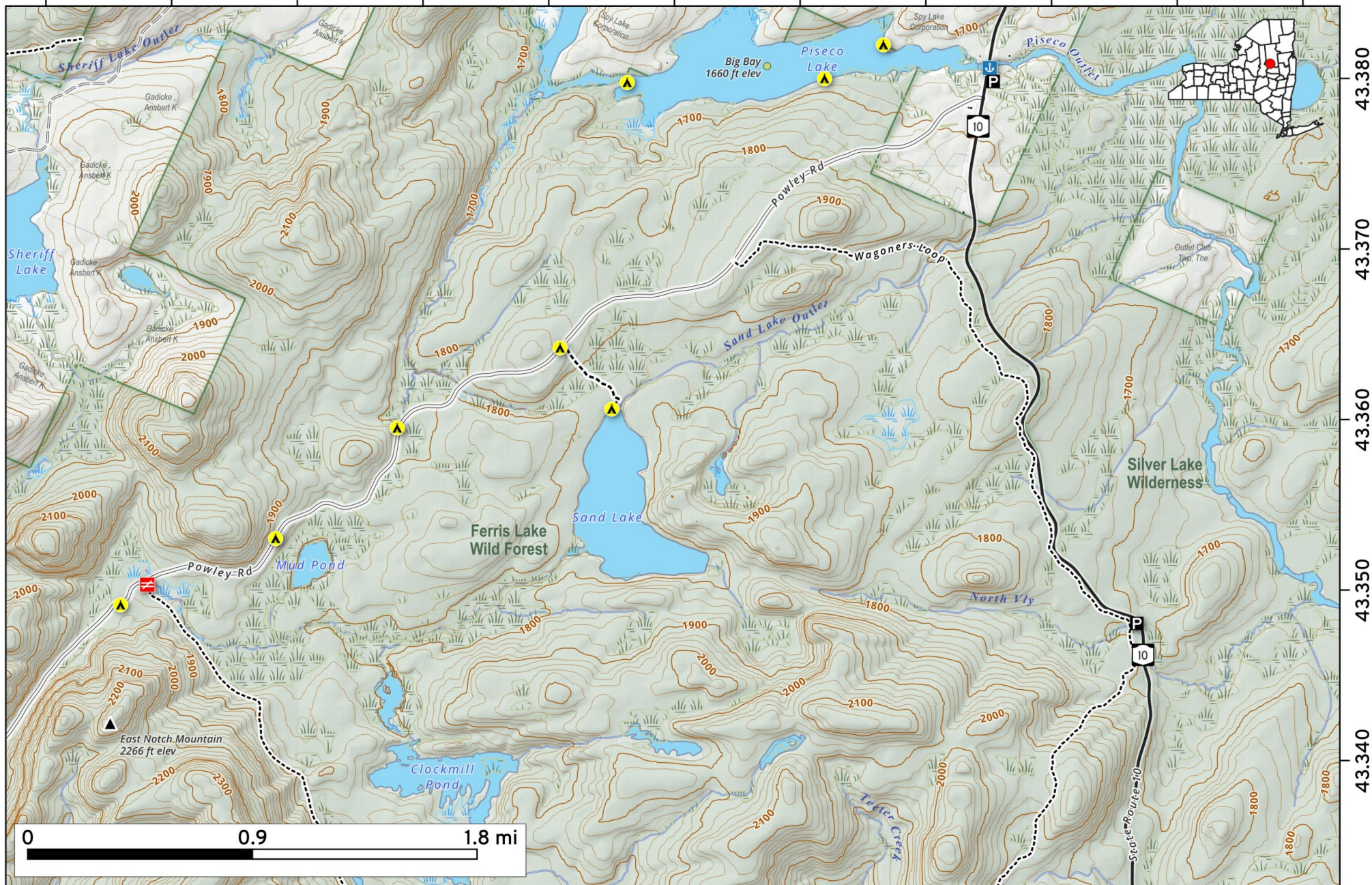
# Clockmill Corners Trail to NY 10.

Map shows the Sand Lake Trail, along with some of the snowmobile trails that unmaintained in the summer months. This part of Piseco-Powley Road is more remote, with fewer campsites then further south sections.



Map created by Andy Arthur on 2/2/2026 in QGIS 3.44.6-Solothurn. Data: NYS GIS and NYS DEC. More at [andyarthur.org](http://andyarthur.org).

-74.620    -74.610    -74.600    -74.590    -74.580    -74.570    -74.560    -74.550    -74.540    -74.530    -74.520

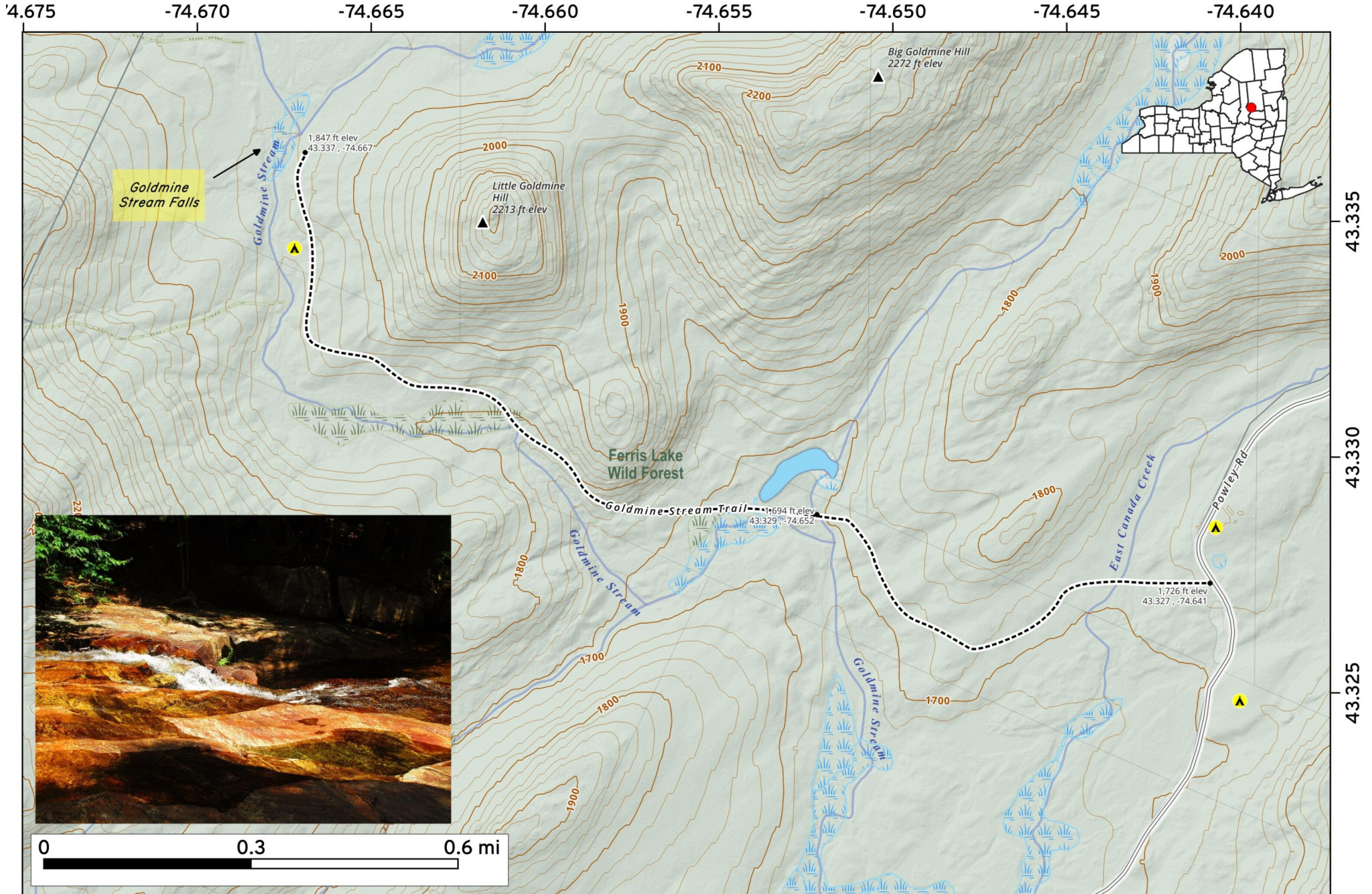


43.380  
43.370  
43.360  
43.350  
43.340

**Goldmine Stream Falls** located about 1 1/2 miles back along a well-worn herd path about 200 feet from Campsite 14 along Piseco-Powley Road. These waterfalls are noted for their golden color and gentle flow most of the summer. A great place to find solitude on a hot summer afternoon with a good book.



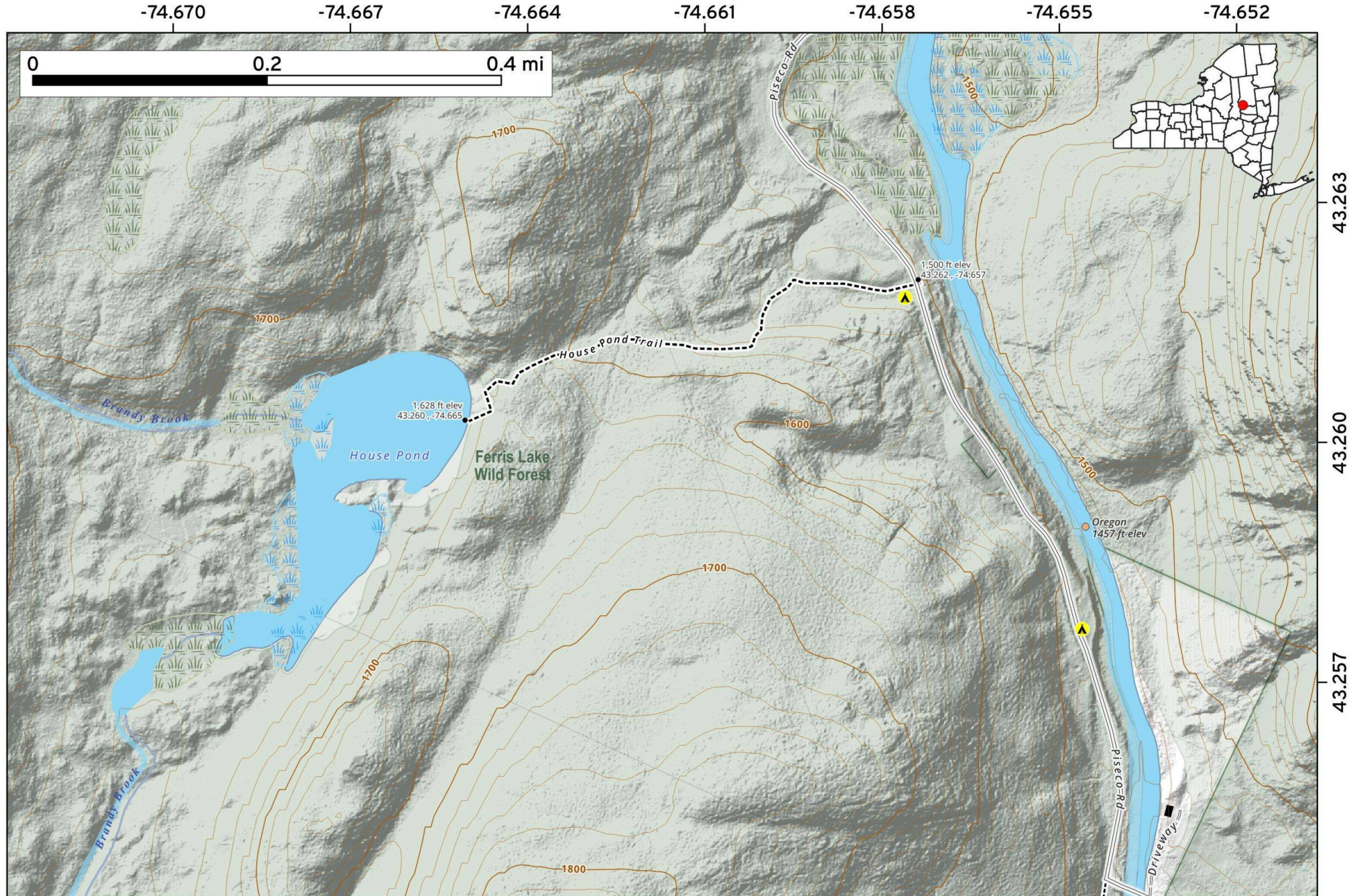
Map created by Andy Arthur on 2/9/2026 in QGIS 3.44.7-Solothurn. Data: NYS GIS and NYS DEC. More at [andyarthur.org](http://andyarthur.org).



**The House Pond Trail** is a 1.2-mile round-trip hike with a 100 foot ascent starting off Piseco-Powley Road, near Campsite 2. This relatively flat path winds through lush Adirondack hardwoods and culminates at shores of House Pond, which is often used for fishing or picnicking.



Map created by Andy Arthur on 4/20/2026 in QGIS 3.44.9-Solothurn. Data: NYS GIS and NYS DEC. More at [andyarthur.org](http://andyarthur.org).

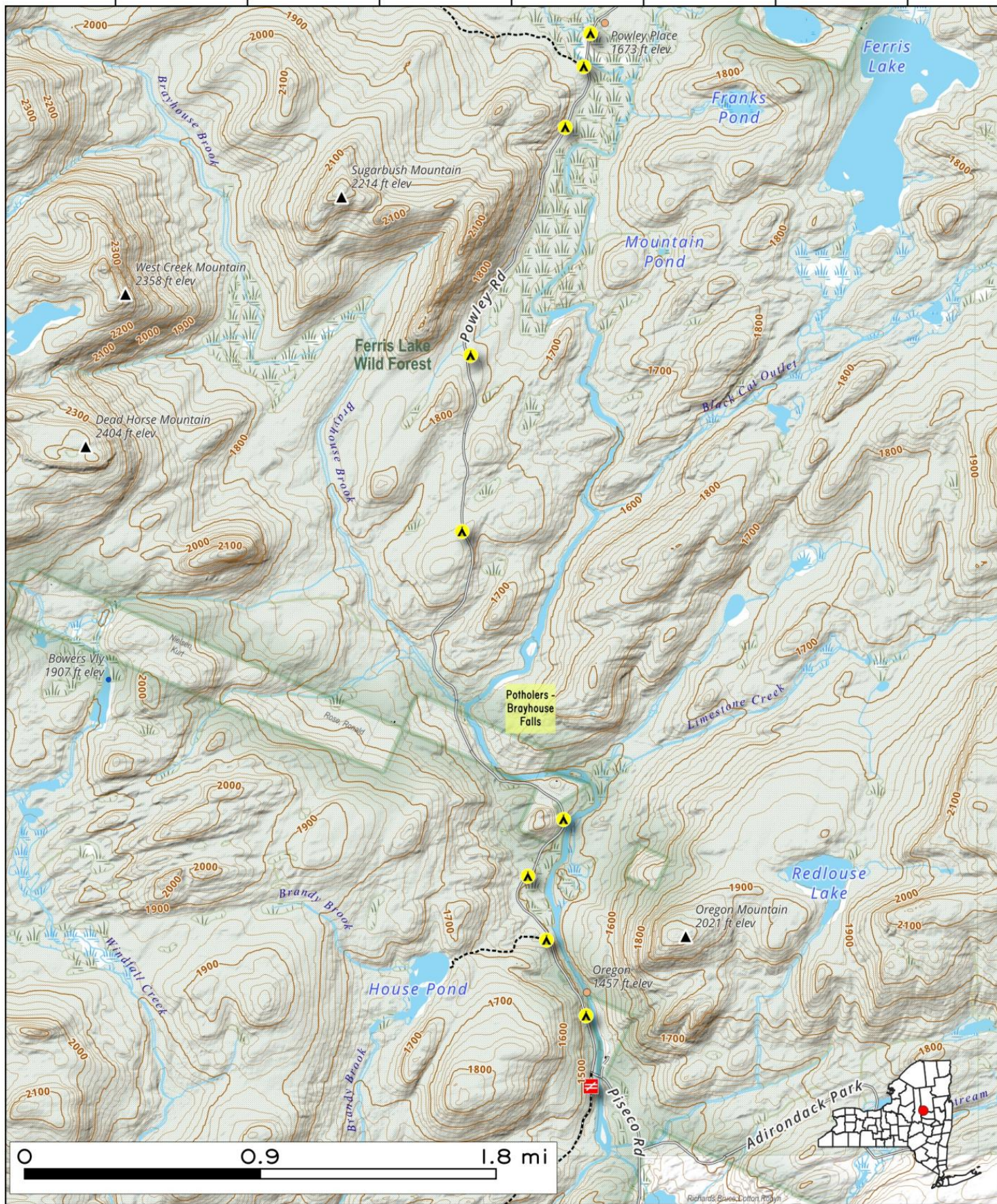


# Piseco Powley Road - Lower Powley Bridge to Sugarbush Mountain/Powley Place. The southern most 4 miles of Piseco-Powley Road in the forest preserve. Roadside campsites, Potholes/Brayhouse Falls, House Pond, Powley Place.

Map created by Andy Arthur on 10/2/2025 in QGIS 3.44.3-Solothurn. Contains NYS GIS and DEC data with additional campsites added by Andy. More maps at [andyarthur.org](http://andyarthur.org).



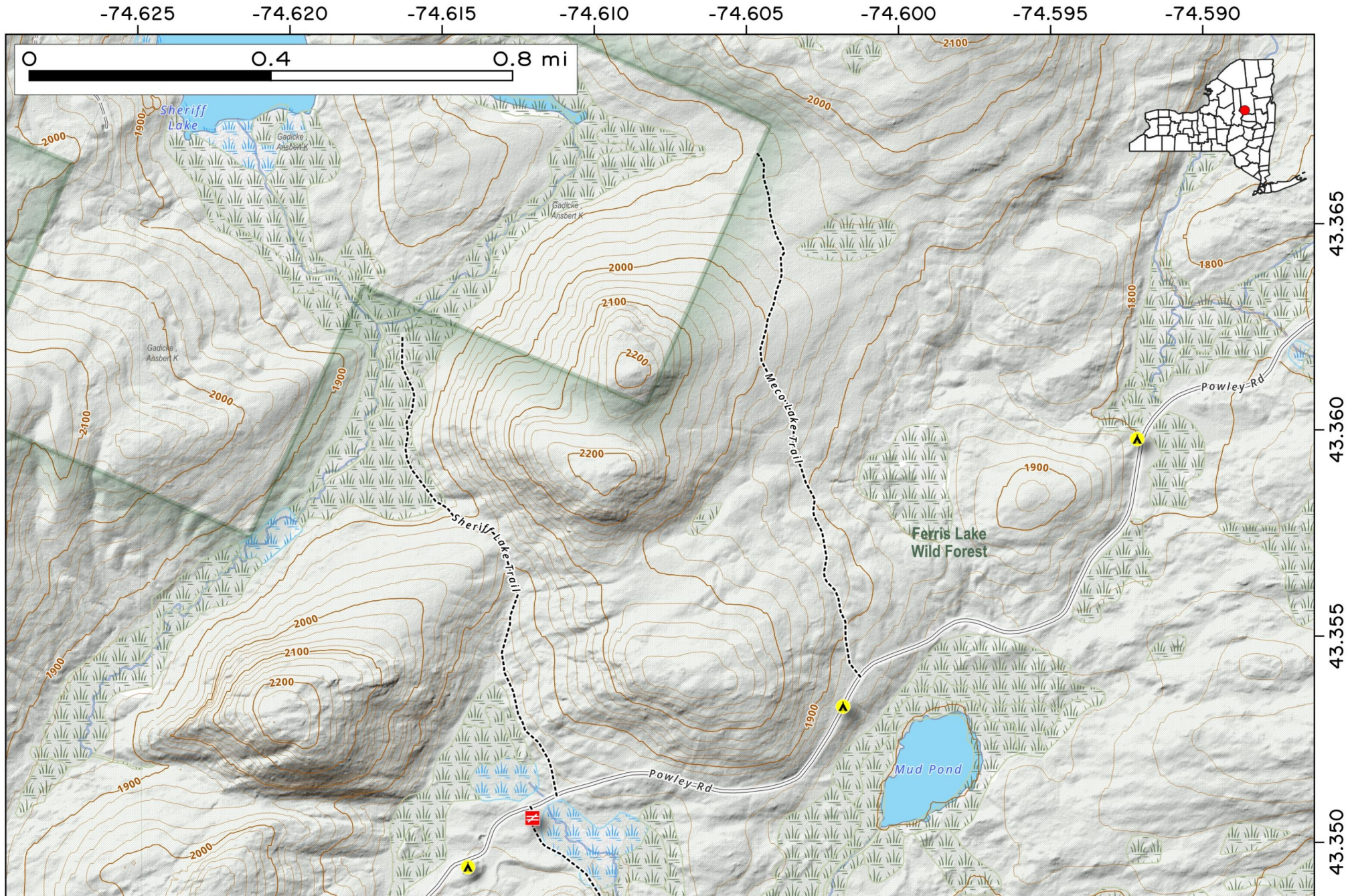
-74.69      -74.68      -74.67      -74.66      -74.65      -74.64      -74.63



43.31  
43.30  
43.29  
43.28  
43.27  
43.26  
43.25

# Meco and Sherriff's Lake Snowmobile Trails. This map shows two snowmobile trails near Mud Pond on Piseco-Powley Road that can be used to access the back country up to where it crosses on private land.

Map created by Andy Arthur on 1/6/2026 in QGIS 3.44.6-Solothurn. Contains NYS GIS and DEC data with additional campsites added by Andy. More maps at [andyarthur.org](http://andyarthur.org).

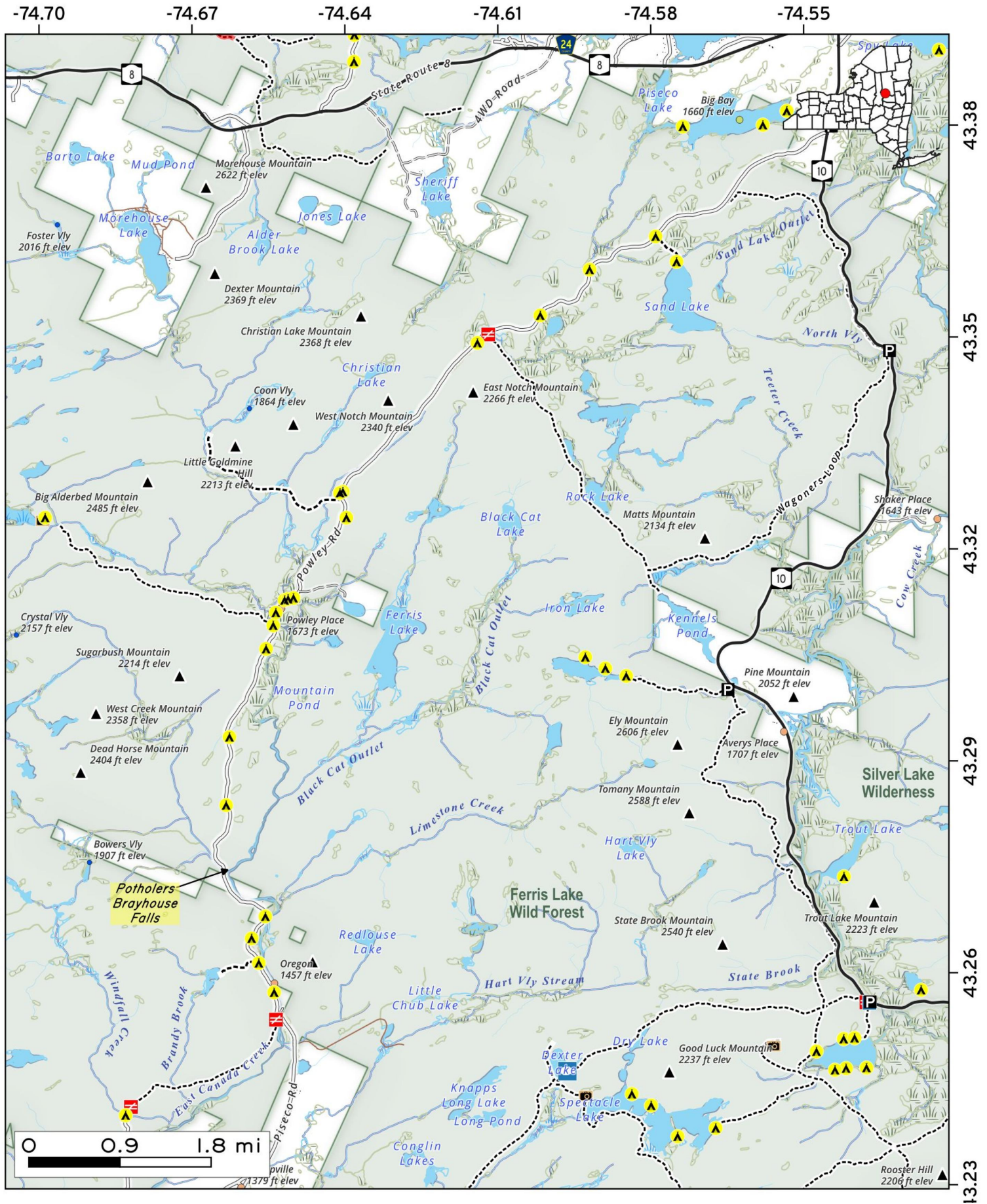


# Piseco-Powley Road Campsites.

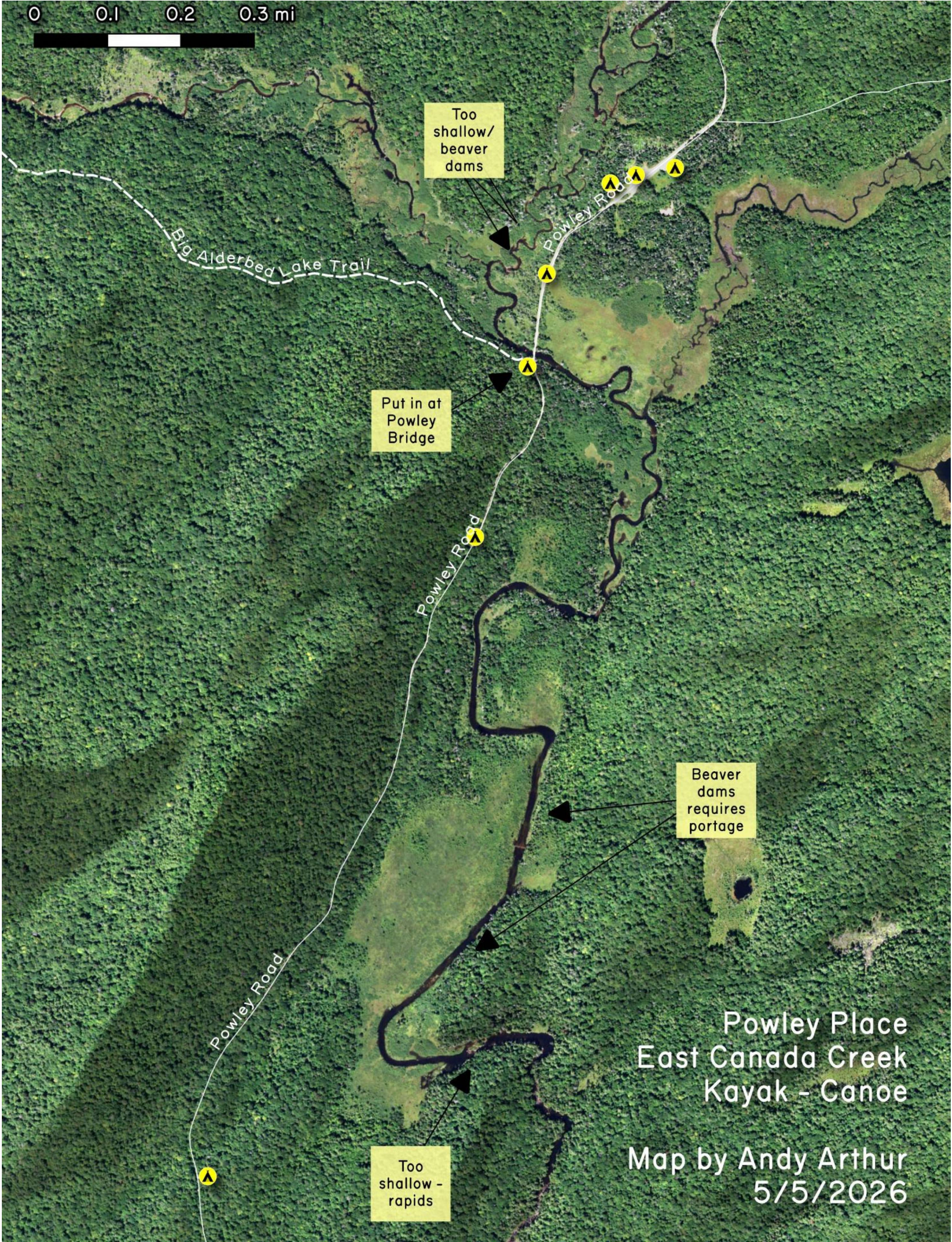
This map shows the locations of campsites along Piseco-Powley Road.



Map created by Andy Arthur on 6/8/2026 in QGIS 3.44.10-Solothurn. Data: NYS GIS and NYS DEC. More at [andyarthur.org](http://andyarthur.org)



0 0.1 0.2 0.3 mi



Too shallow/  
beaver  
dams

Big Alderbed Lake Trail

Powley Road

Put in at  
Powley  
Bridge

Powley Road

Beaver  
dams  
requires  
portage

Powley Road

Powley Place  
East Canada Creek  
Kayak - Canoe

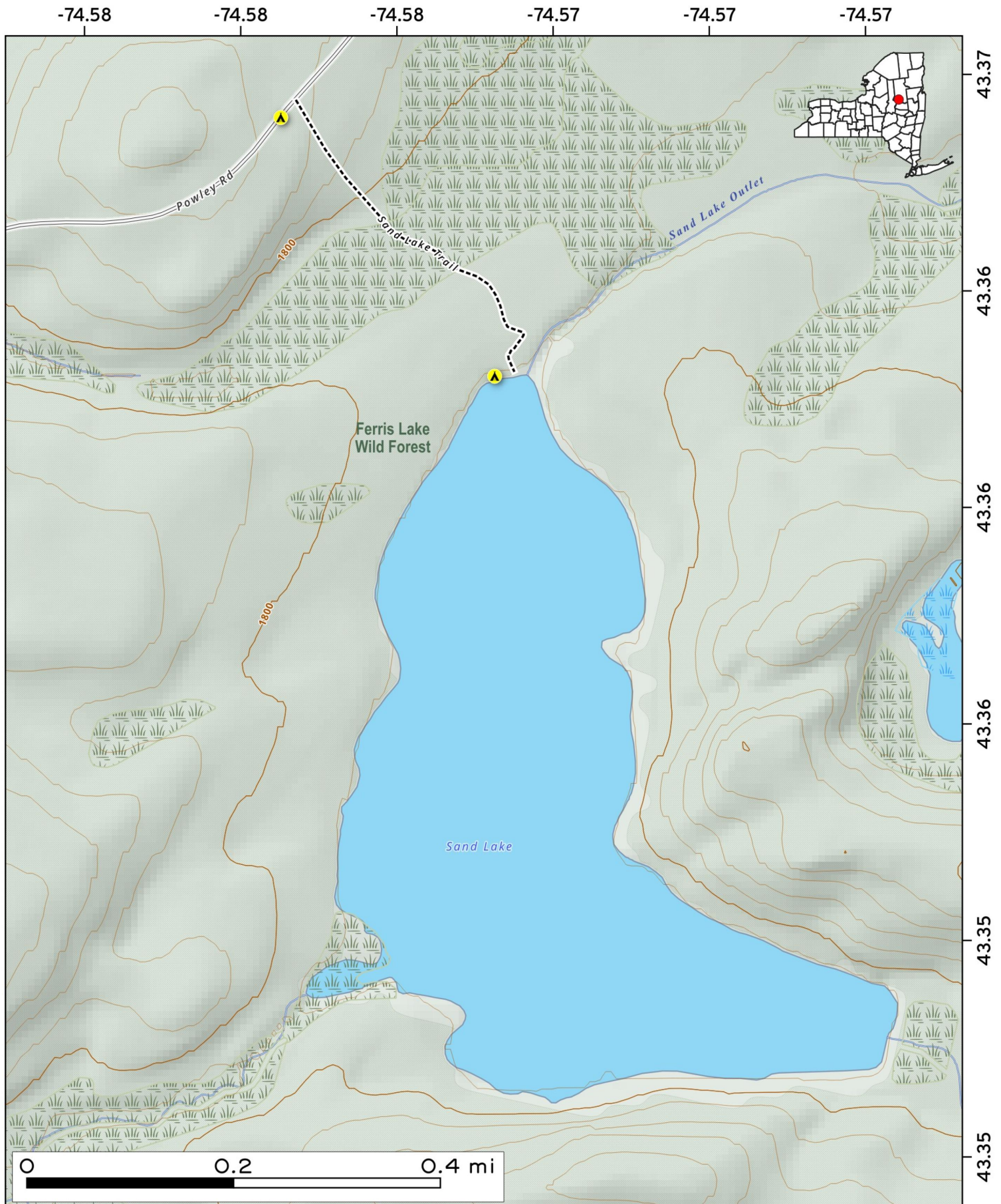
Too shallow -  
rapids

Map by Andy Arthur  
5/5/2026

**Sand Lake Trail.** 1/2 mile dirt and mud trail back to Sand Lake. Sometimes is wet, may be difficult with a portage cart in a few places.

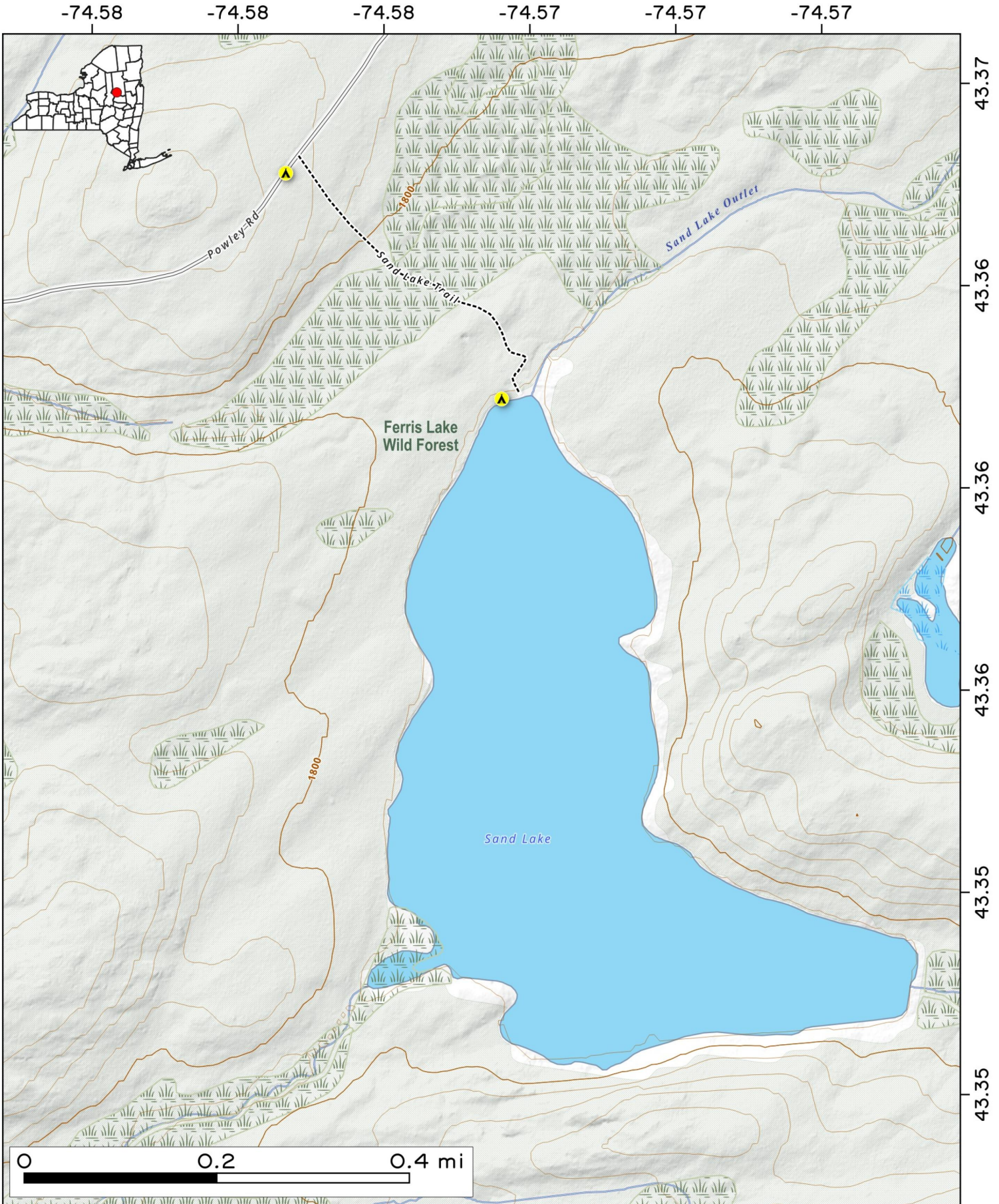


Map created by Andy Arthur on 2/2/2026 in QGIS 3.44.6-Solothurn. Data: NYS GIS and NYS DEC. More at [andyarthur.org](http://andyarthur.org).



Sand Lake Trail on Piseco-Powley Road is a somewhat swampy trail that runs a 1/2 mile back from a campsite along Piseco-Powley Road.

Map created by Andy Arthur on 1/13/2026 in QGIS 3.44.6-Solothurn. Contains NYS GIS and DEC data with additional campsites added by Andy. More maps at [andyarthur.org](http://andyarthur.org).

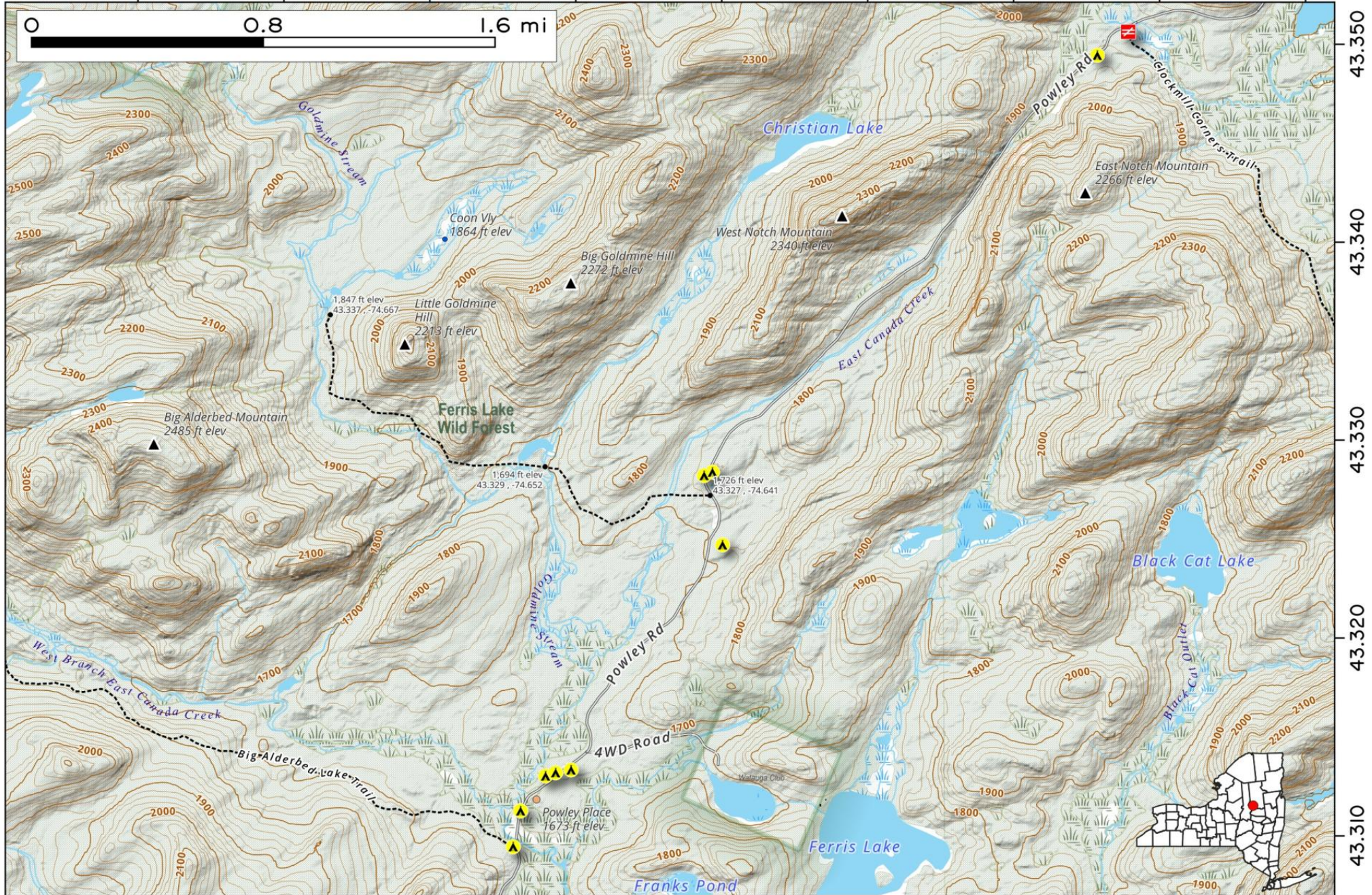
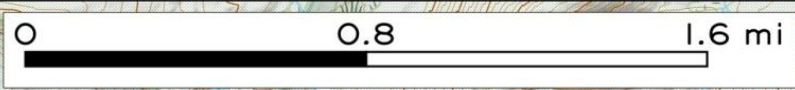


# Piseco Powley Road - Sugar Bush Mountain to Clockmill Corners. Map shows Powley Place, Goldmine Stream Falls Trail and Big Alder Bed Trail, East Canada Creek Flatwaters near Powley Place.

Map created by Andy Arthur on 10/2/2025 in QGIS 3.44.3-Solothurn. Contains NYS GIS and DEC data with additional campsites added by Andy. More maps at [andyarthur.org](http://andyarthur.org).



-74.680    -74.670    -74.660    -74.650    -74.640    -74.630    -74.620    -74.610    -74.600



43.350  
43.340  
43.330  
43.320  
43.310