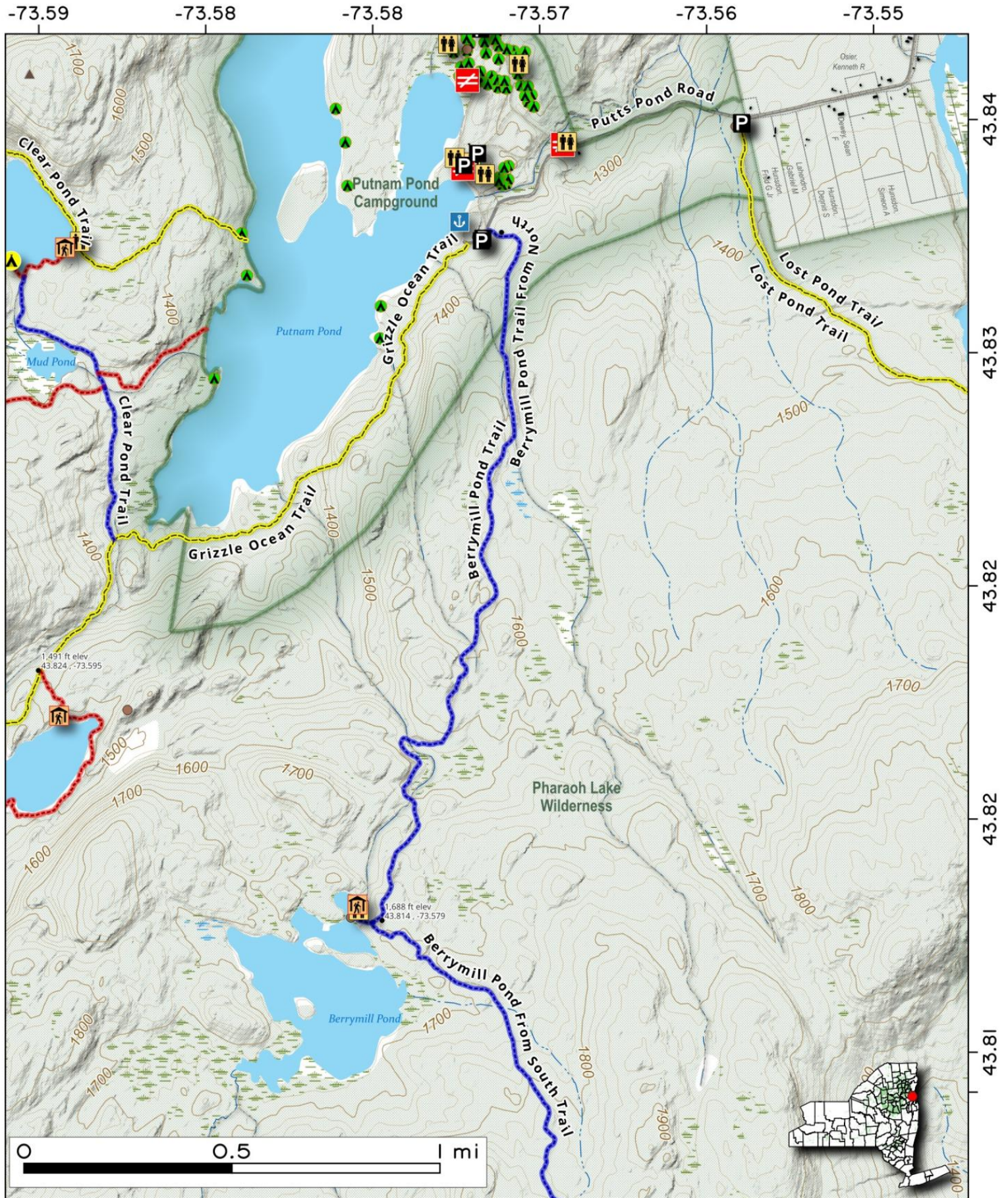


Berry Mill Pond via the Putts Pond Campground. While there is an entrance fee to access Berry Mill Pond via the Putts Pond Campground, it can provide a convenient way to access this pond via a mostly flat 2 mile hike from the north down to the pond.

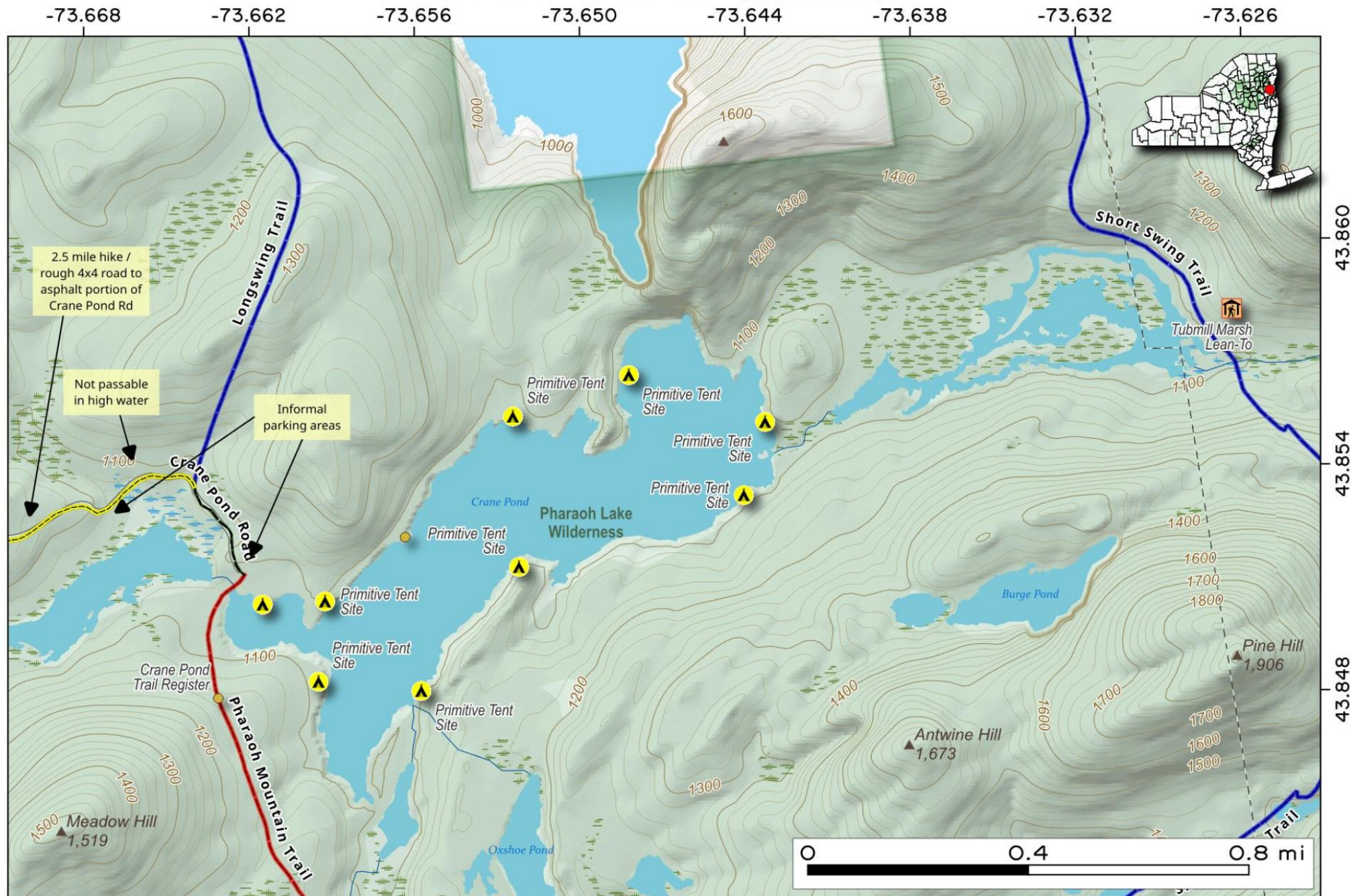
Map created by Andy Arthur on 8/14/2025 in QGIS 3.44.1-Solothurn. Contains US Forest Service Base Map, NYS DEC data with additional campsites added by Andy. More maps at andyarthur.org.



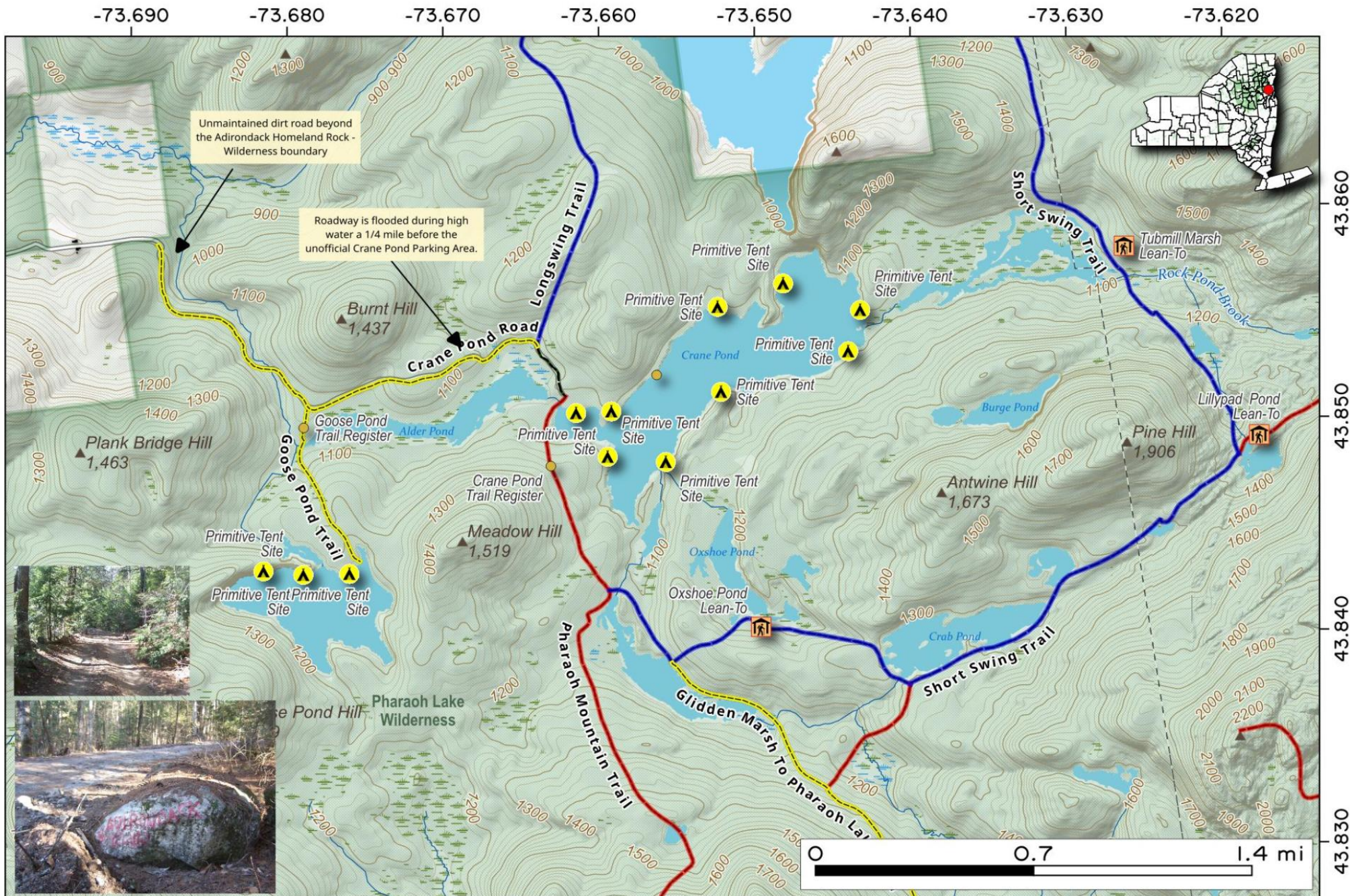
Crane Pond. Wilderness lake in Pharaoh Lake Wilderness, end of Crane Pond Road and access to Pharaoh Mountain and much of the interior wilderness. Designated campsites ring the lake. Lake becomes Tub Mill Marsh upstream and downstream is Alder Pond which often floods into Crane Pond Road, though there is a pedestrian walkway around the flooded area.



Map created by Andy Arthur on 6/17/2025 in QGIS 3.34.15-Prizren. Contains US Forest Service Base Map, NYS DEC data with additional campsites added by Andy. More maps at andyarthur.org.

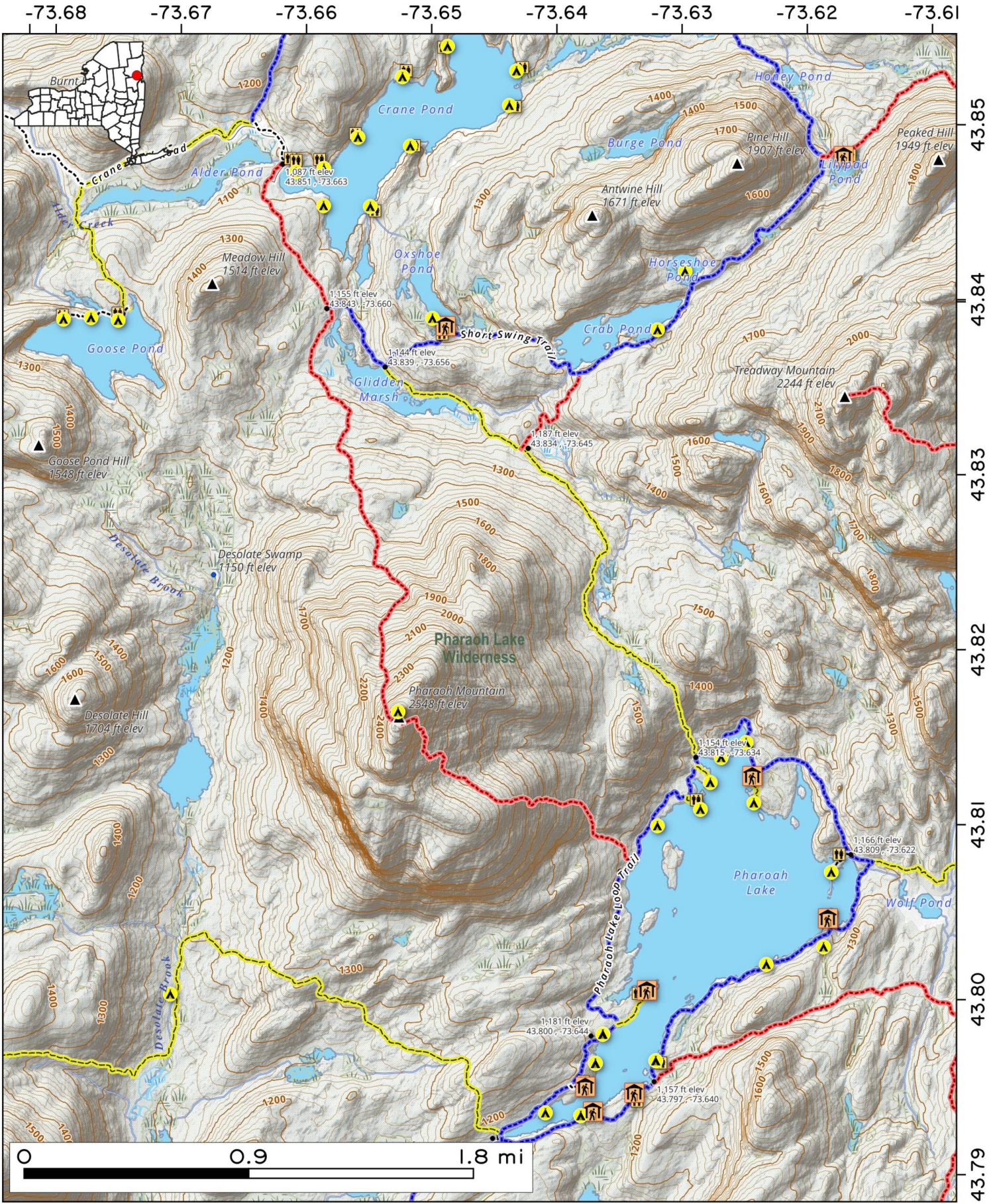


Crane Pond Road is an unmaintained dirt track back to Crane Pond in Pharaoh Lake Wilderness. The road is often passable but rough for high ground clearance vehicles with the exception of the last 1/4 mile which depends on water levels on Alder Pond. Map created by Andy Arthur on 6/17/2025 in QGIS 3.34.15-Prizren. Contains US Forest Service Base Map, NYS DEC data with additional campsites added by Andy. More maps at andyarthur.org.



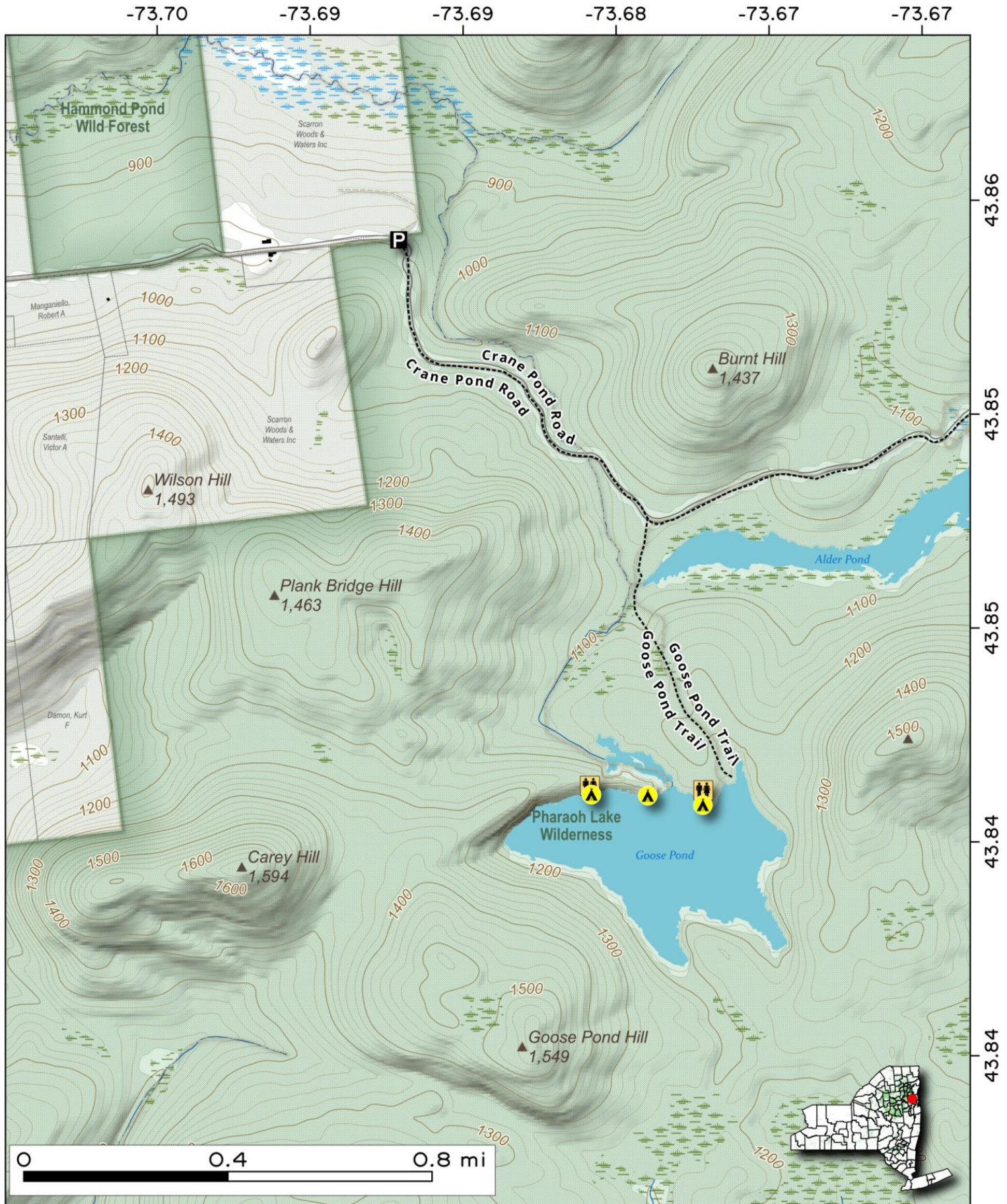
To travel between Crane Pond and Pharaoh Lake, choose the 3.8-mile Pharaoh Mountain Trail for a steep, scenic 1,355-foot climb with expansive views. Alternatively, the 2.6-mile Glidden Marsh Trail offers a much easier route, ascending only 300 feet.

Map created by Andy Arthur on 1/12/2026 in QGIS 3.44.6-Solothurn. Contains NYS GIS and DEC data with additional campsites added by Andy. More maps at andyarthur.org.



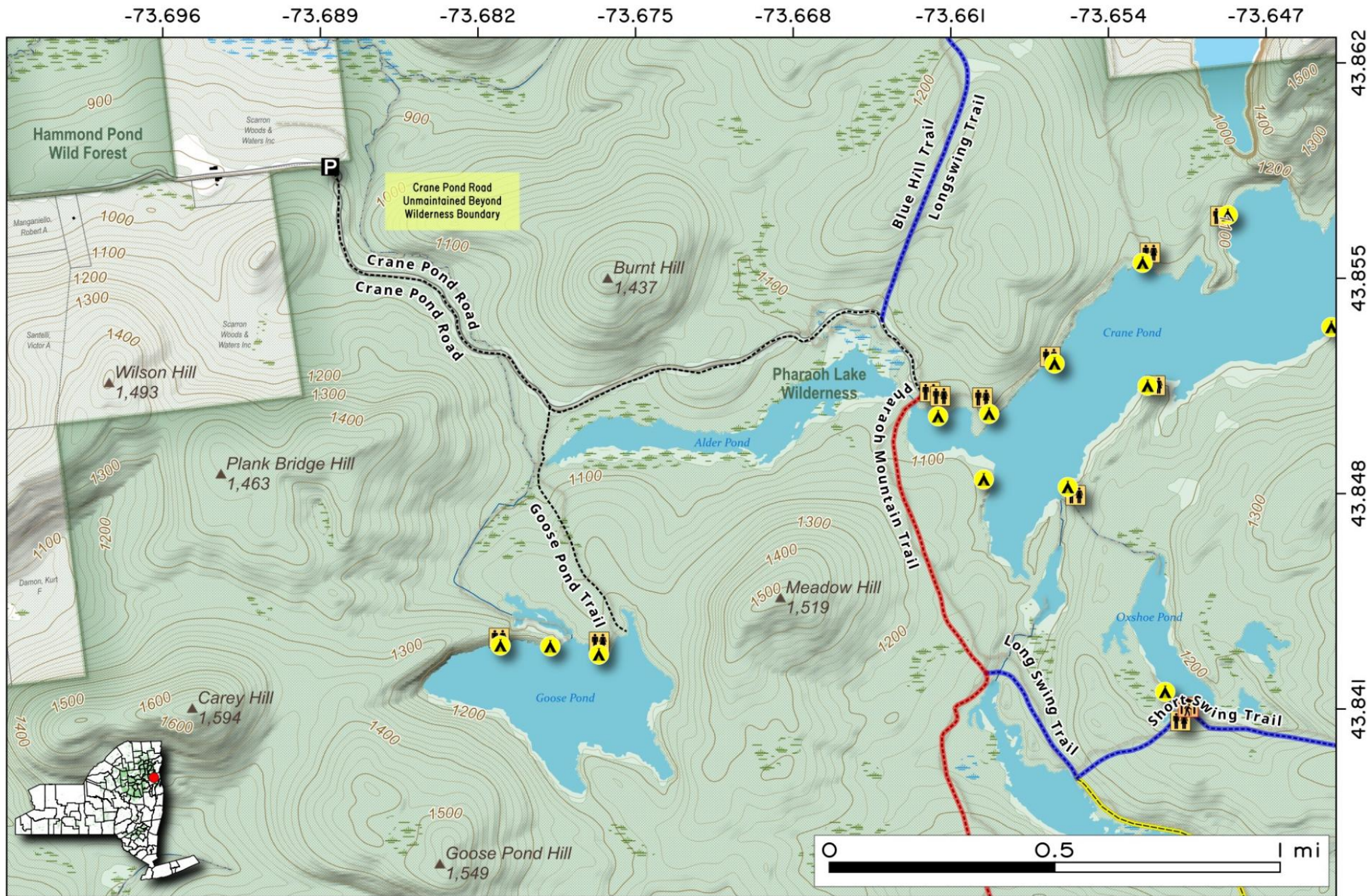
Goose Pond Trail leaves the roughly 4x4-only Crane Pond Road 9/10th of a mile from the wilderness boundary then extends an additional 9/10th of a mile to Goose Pond, ascending 140 feet. Together it's about a two mile hike back from the wilderness boundary.

Map created by Andy Arthur on 9/16/2025 in QGIS 3.44.2-Solothurn. Contains US Forest Service Base Map, NYS DEC data with additional campsites added by Andy. More maps at andyarthur.org.



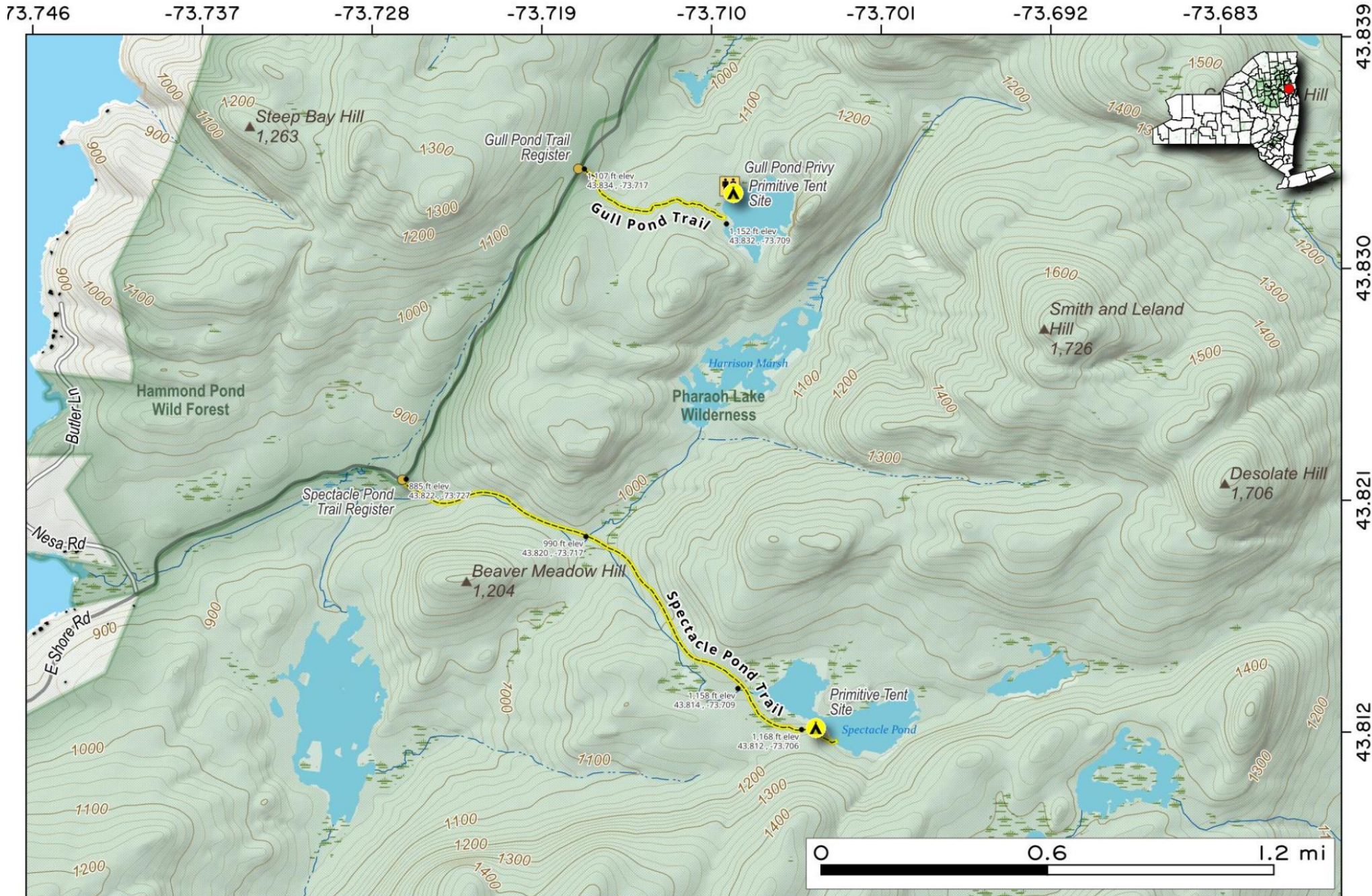
Goose Pond Trail leaves the roughly 4x4-only Crane Pond Road 9/10th of a mile from the wilderness boundary then extends an additional 9/10th of a mile to Goose Pond, ascending 140 feet. Together it's about a two mile hike back from the wilderness boundary.

Map created by Andy Arthur on 9/16/2025 in QGIS 3.44.2-Solothurn. Contains US Forest Service Base Map, NYS DEC data with additional campsites added by Andy. More maps at andyarthur.org.



Gull and Spectacle Ponds. Two leg-stretcher hikes to small ponds along East Shore Road on the backside of Schroon Lake. Gull Pond is 1/2 mile back with a campsite and outhouse. Spectacle Pond is 1.7 miles back with a 230 ft ascent.

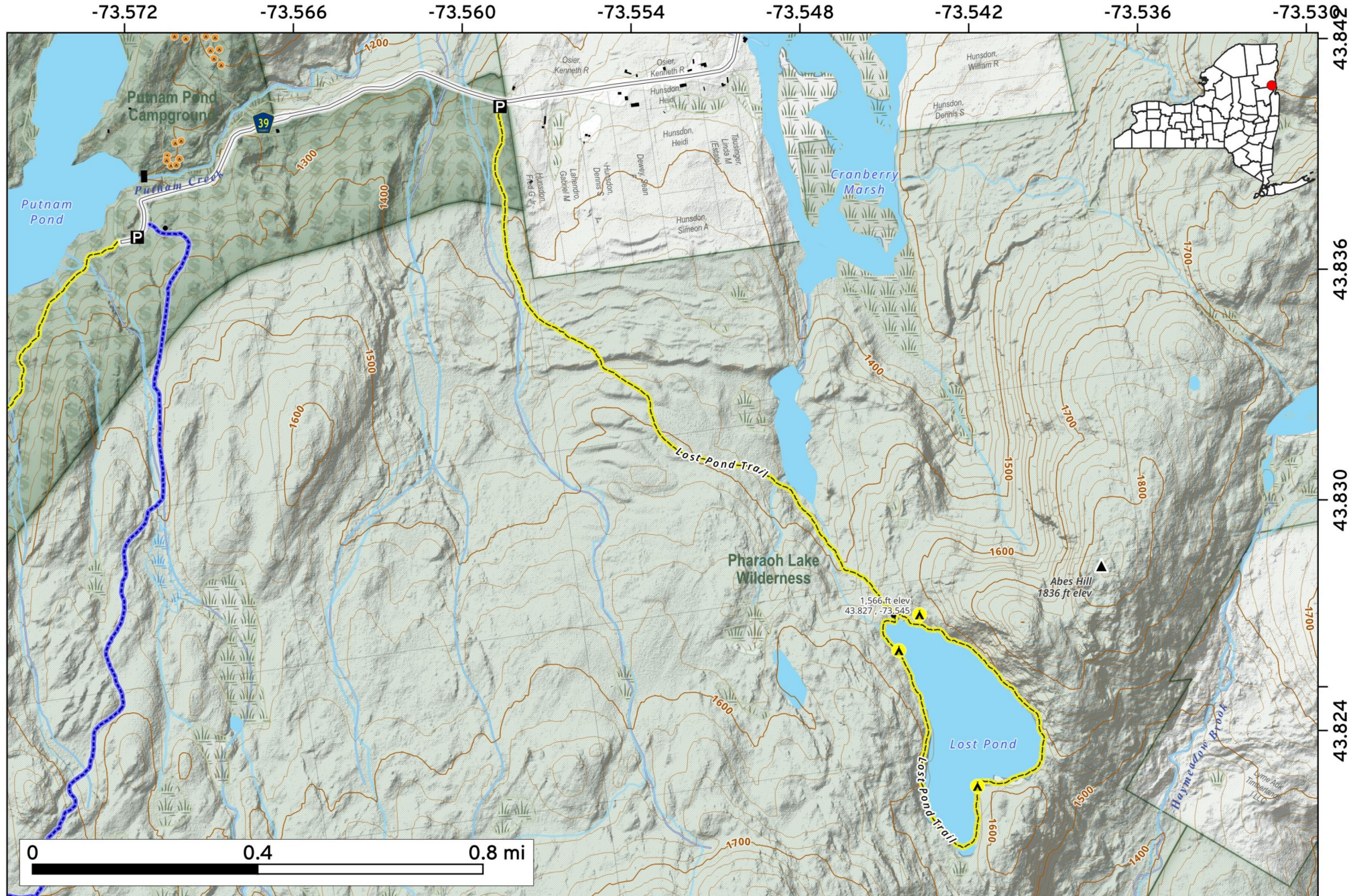
Map created by Andy Arthur on 6/17/2025 in QGIS 3.34.15-Prizren. Contains US Forest Service Base Map, NYS DEC data with additional campsites added by Andy. More maps at andyarthur.org.



The **Lost Pond Trail** is a 3.7-mile loop near Putnam Pond Campground. This moderate hike follows an old woods road through lush forest to a scenic pond. While the initial path is easy, the loop around the water is rocky with boulder fields and narrow embankments.



Map created by Andy Arthur on 3/11/2026 in QGIS 3.44.7-Solothurn. Data: NYS GIS and NYS DEC. More at andyarthur.org.



Pharaoh Lake Trail.

A gentle upslope generally greets hikers on their traverse from Beaver Pond Road back to Pharaoh Lake.

Map created by Andy Arthur on 10/17/2024 in QGIS 3.34.11-Prizren. Contains US Forest Service Base Map. NYS DEC Data. More maps at andyarthur.org.



-73.70

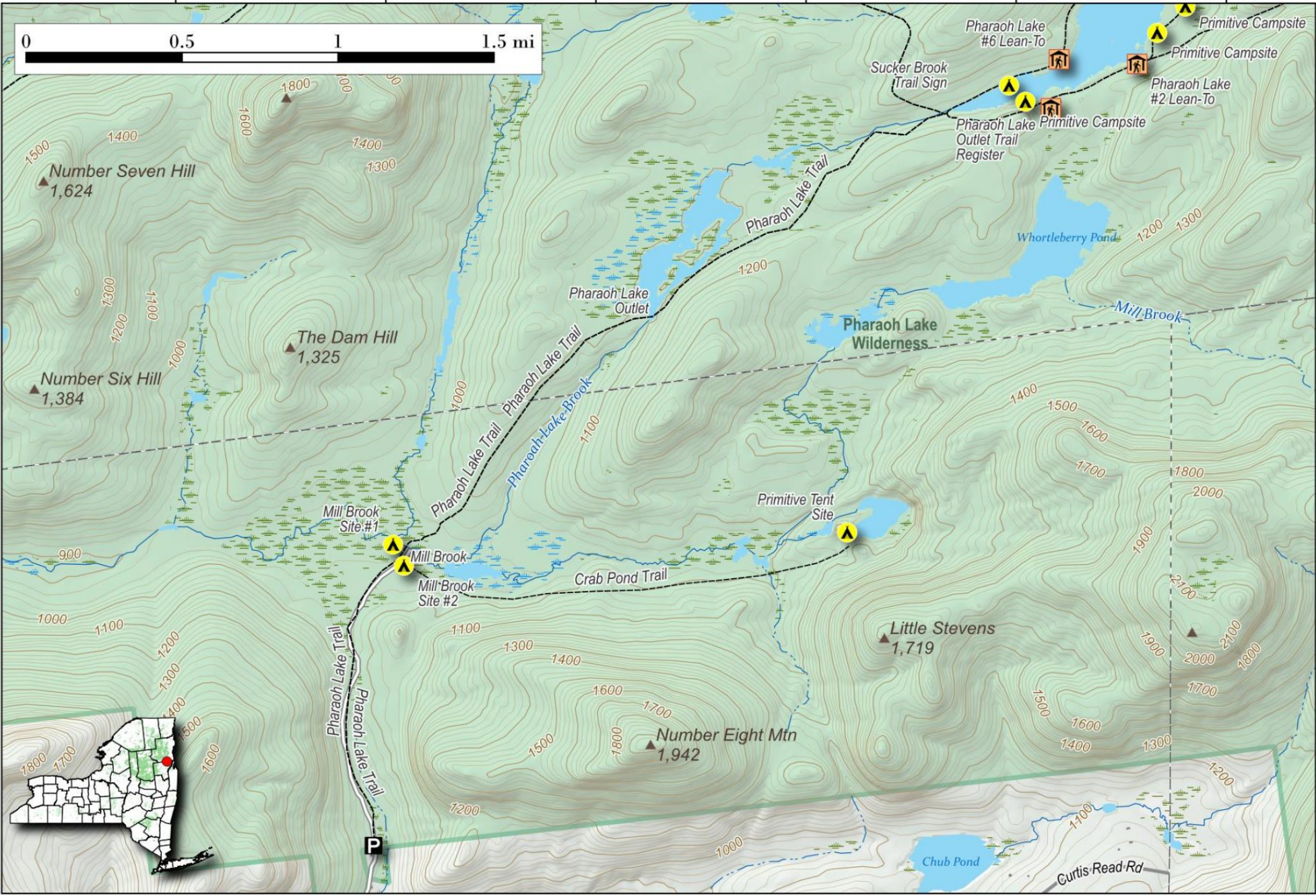
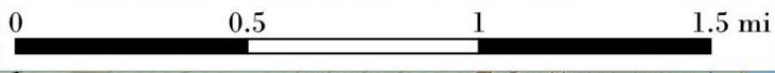
-73.69

-73.68

-73.66

-73.65

-73.63

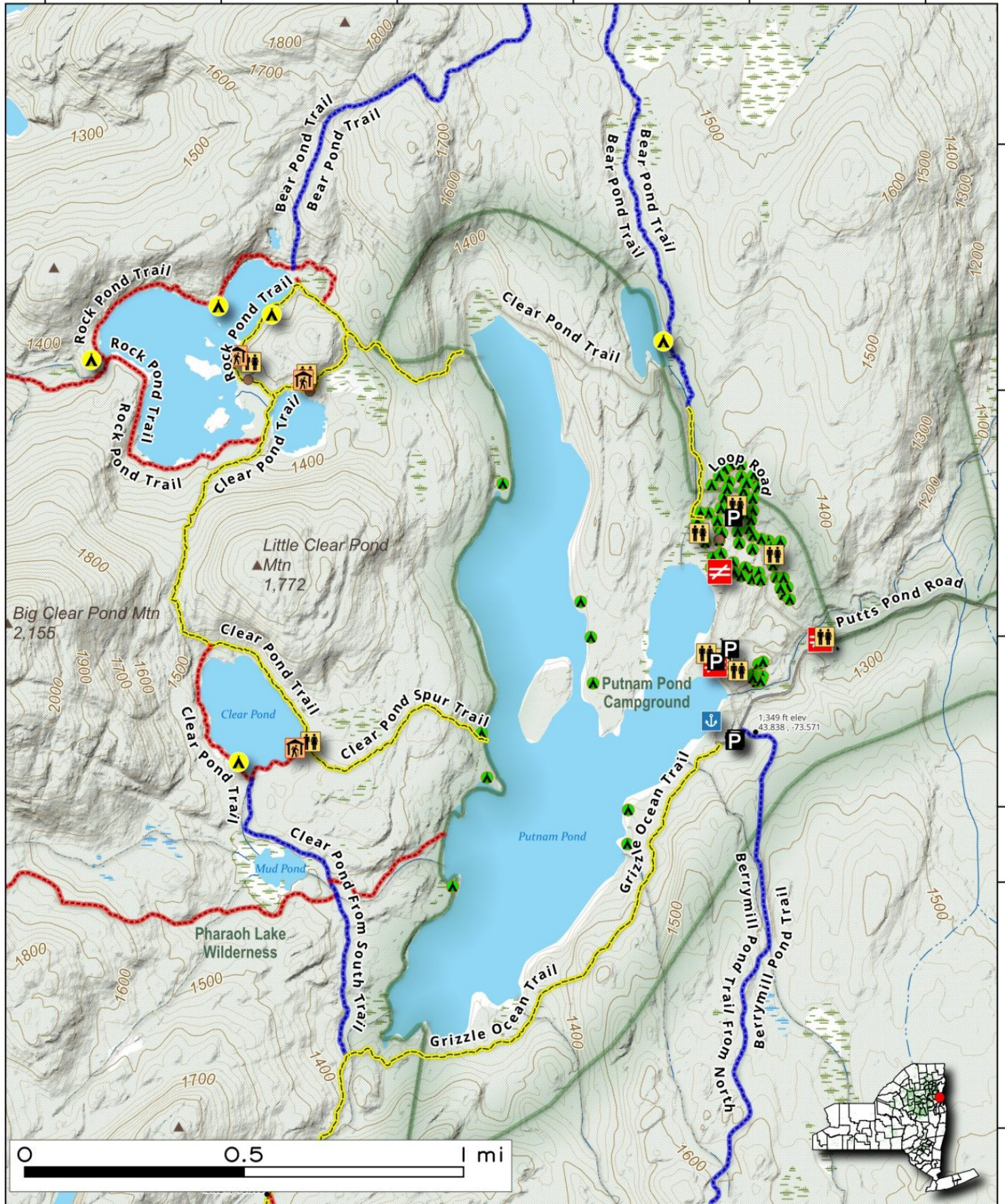


Putnam Pond Campground offers 72 campsites, boating, fishing, and swimming on a 172-acre pond. Enjoy hiking in the nearby Pharaoh Lake Wilderness area with over 60 miles of trails. Amenities include picnic tables, grills, restrooms, and a boat launch. A scenic destination for outdoor enthusiasts and nature lovers.



Map created by Andy Arthur on 8/19/2025 in QGIS 3.44.1-Solothurn. Contains US Forest Service Base Map, NYS DEC data with additional campsites added by Andy. More maps at andyarthur.org.

-73.60 -73.59 -73.58 -73.58 -73.57 -73.56



43.86
43.85
43.84
43.83
43.82