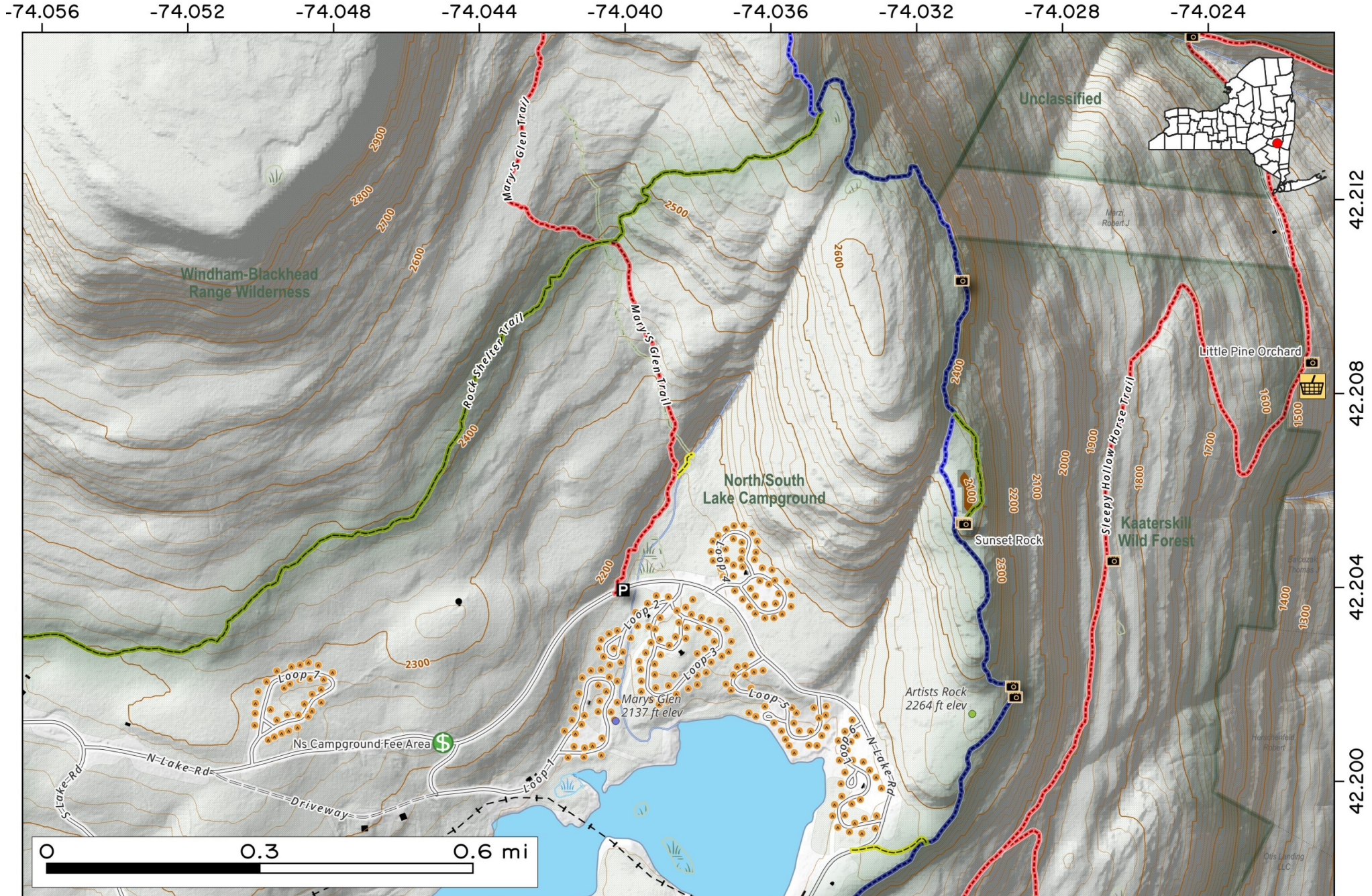


Artist Rock and and Sunset Rock. Scenic overlooks showing the Hudson Valley and North-South Lake near the North-South Lake State Campground.

Map created by Andy Arthur on 12/31/2025 in QGIS 3.44.6-Solothurn. Contains NYS GIS and DEC data with additional campsites added by Andy. More maps at andyarthur.org.

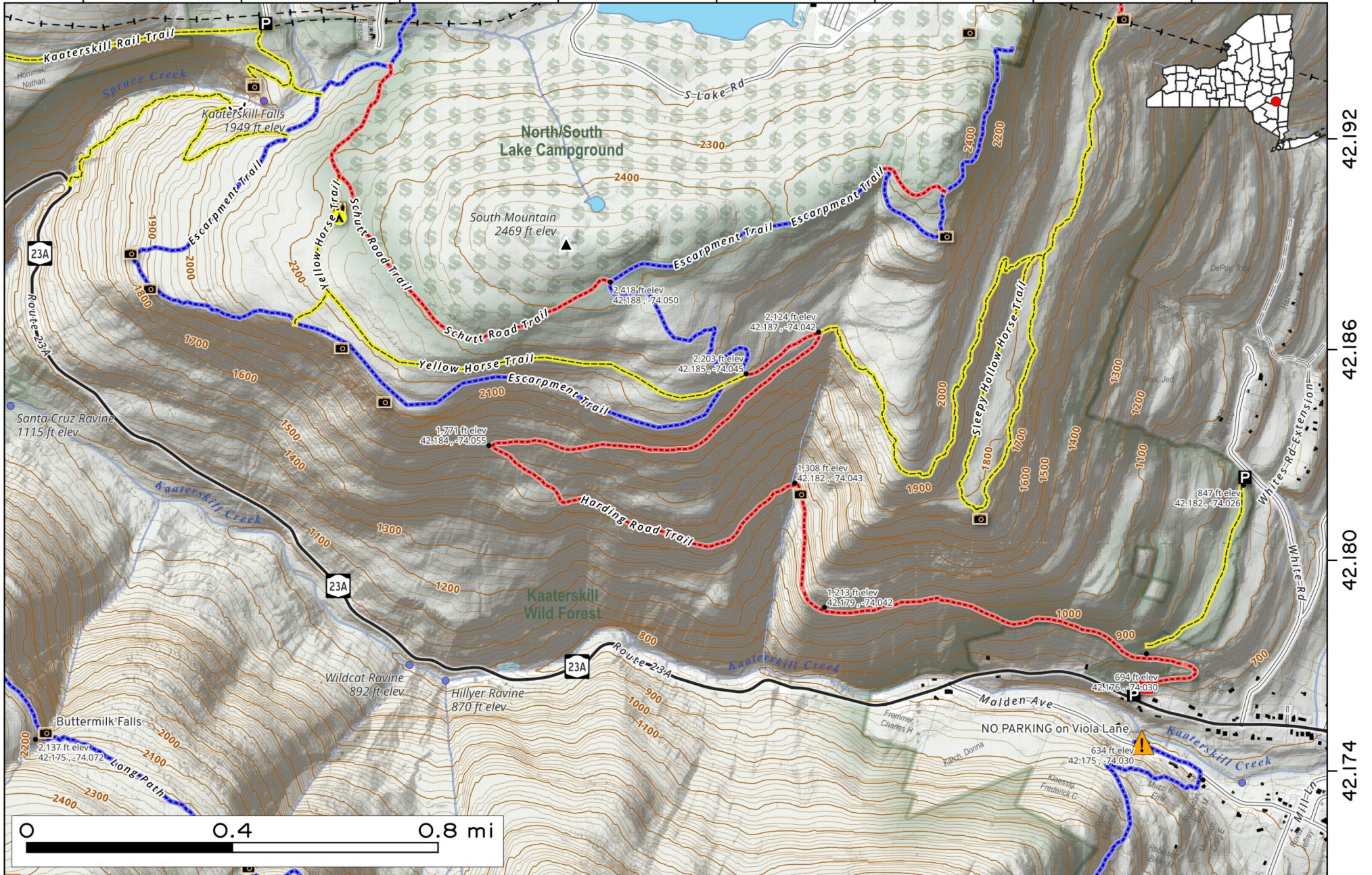


The **Harding Road Trail** is a scenic 2.7-mile old carriageway near Palenville. It offers a moderate, steady climb up South Mountain with views of Kaaterskill Clove. Historically built for the former Kaaterskill Hotel, it now connects hikers to iconic vistas at Inspiration Point and Palenville Overlook.

Map created by Andy Arthur on 1/12/2026 in QGIS 3.44.6-Solothurn. Contains NYS GIS and DEC data with additional campsites added by Andy. More maps at andyarthur.org.



-74.070 -74.064 -74.058 -74.052 -74.046 -74.040 -74.034 -74.028



North South Lake Campground

A map by Andy Artur, February 26, 2026

Free for any use.

