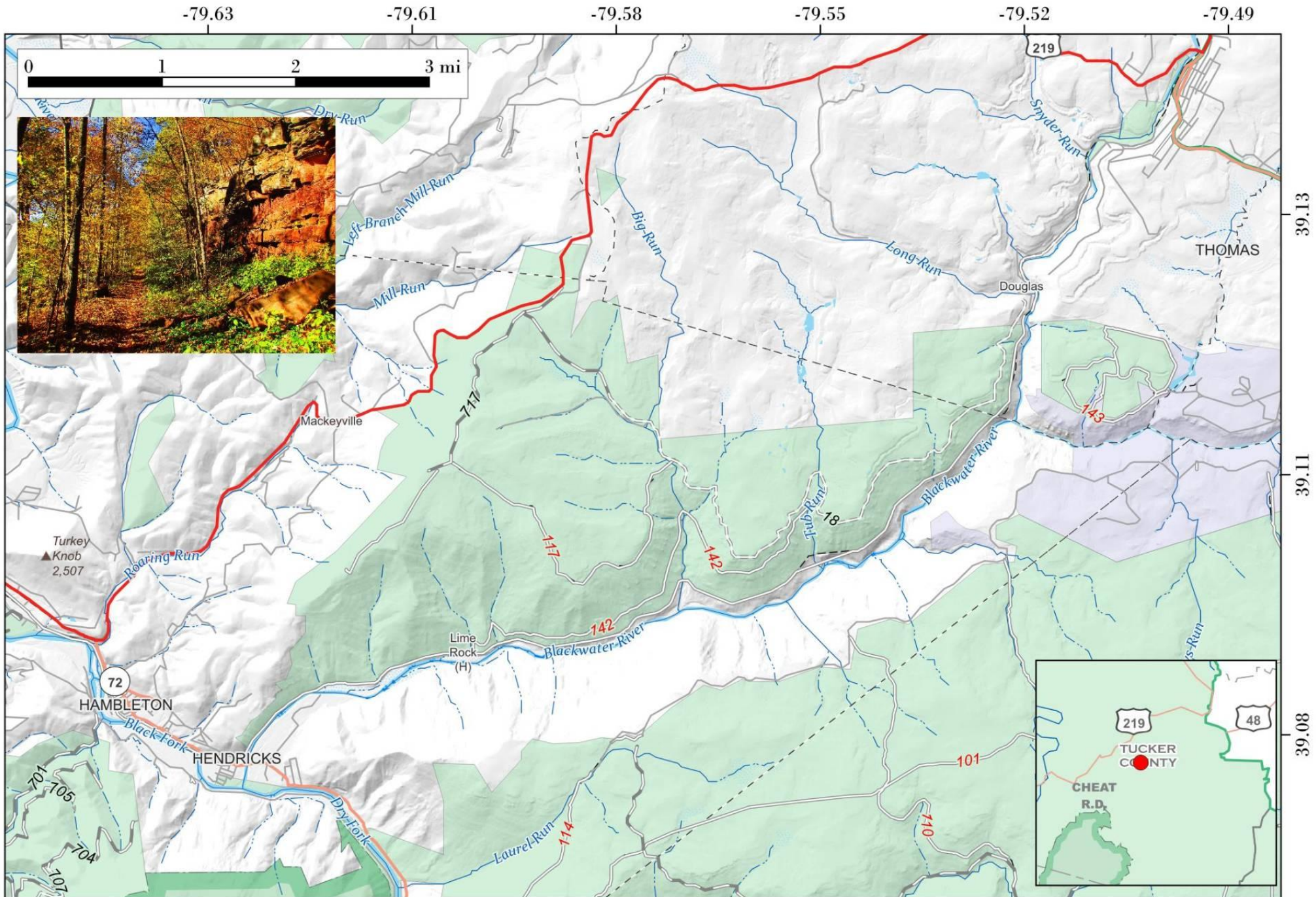


Blackwater Canyon Trail.

10.7 mile trail that follows a steep railway grade down the Blackwater Canyon from Coketon/Thomas to Hendricks, WV.



Map created by Andy Arthur on 10/17/2024 in QGIS 3.34.11-Prizren. Contains US Forest Service Base Map and campsites added by Andy. More maps at andyarthur.org.



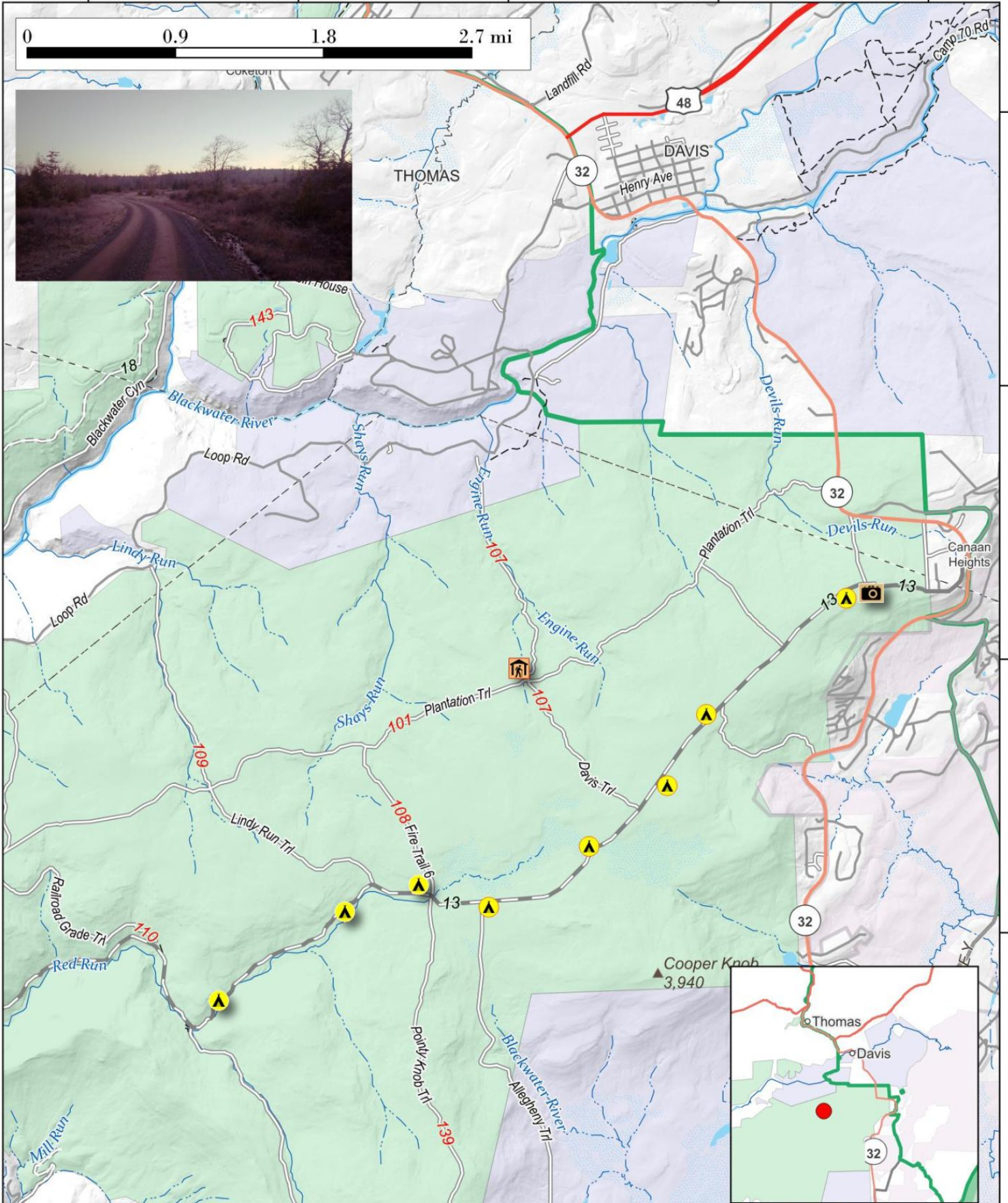
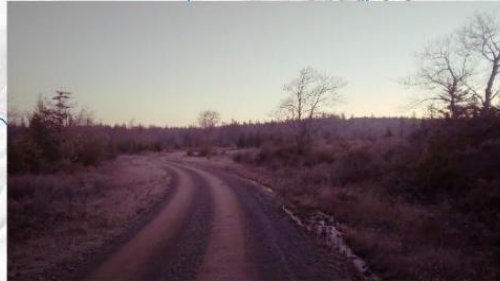
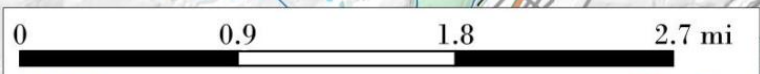
Forest Road 13 Dispersed Camping.

Several campsites have developed with gravel pads for camping along FR 13 outside of Canaan Heights / Davis, WV.

Map created by Andy Arthur on 10/17/2024 in QGIS 3.34.11-Prizren. Contains US Forest Service Base Map and campsites added by Andy. More maps at andyarthur.org.

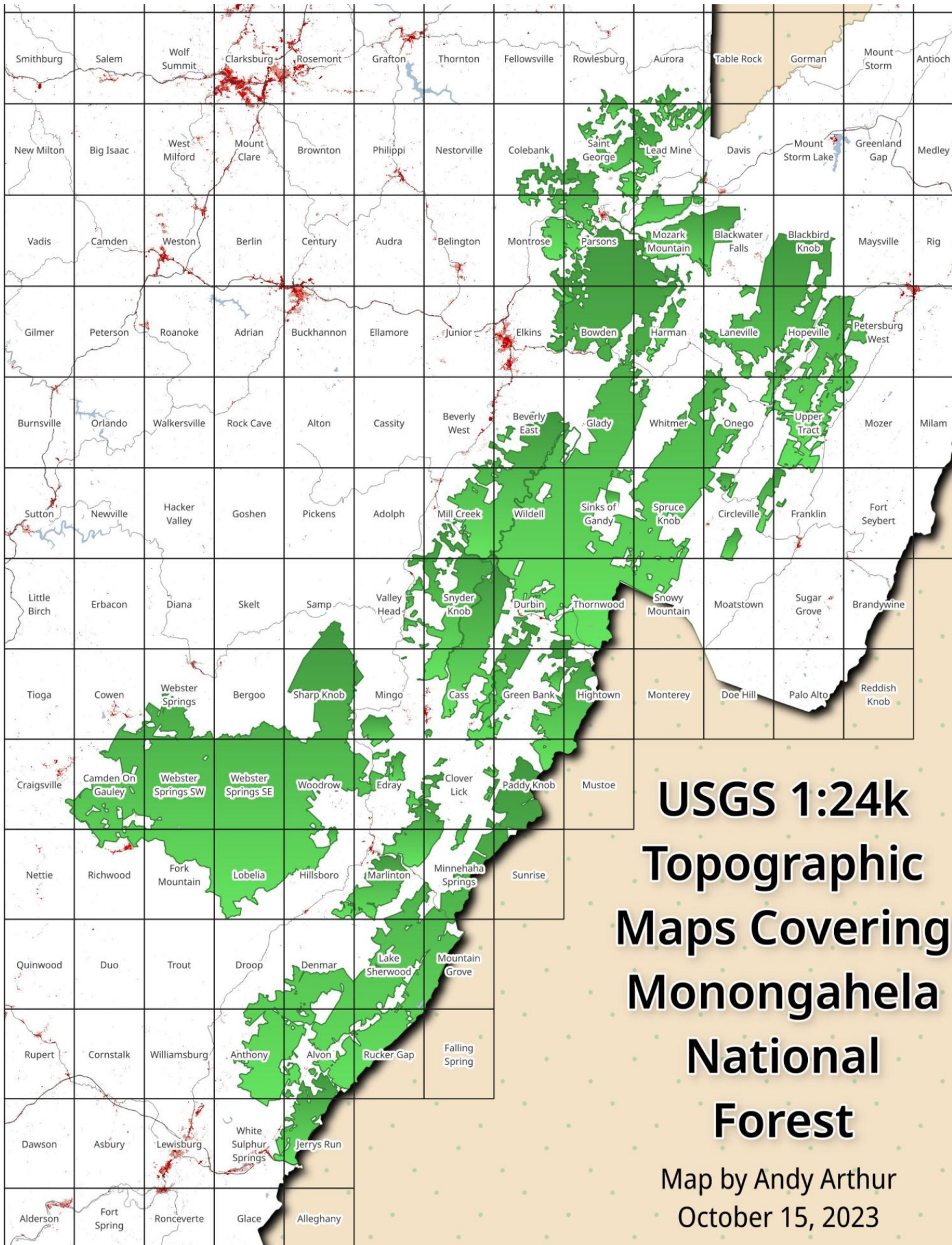


-79.53 -79.51 -79.48 -79.46 -79.44



39.14
39.11
39.09
39.07
39.04





**USGS 1:24k
Topographic
Maps Covering
Monongahela
National
Forest**

Map by Andy Arthur
October 15, 2023

Olson Fire Tower.

Located about 2 1/2 miles from US 219 on between Parsons and Thomas WV offers views of Chet River Valley and hills around.

Map created by Andy Arthur on 10/17/2024 in QGIS 3.34.11-Prizren. Contains US Forest Service Base Map. More maps at andyarthur.org.

