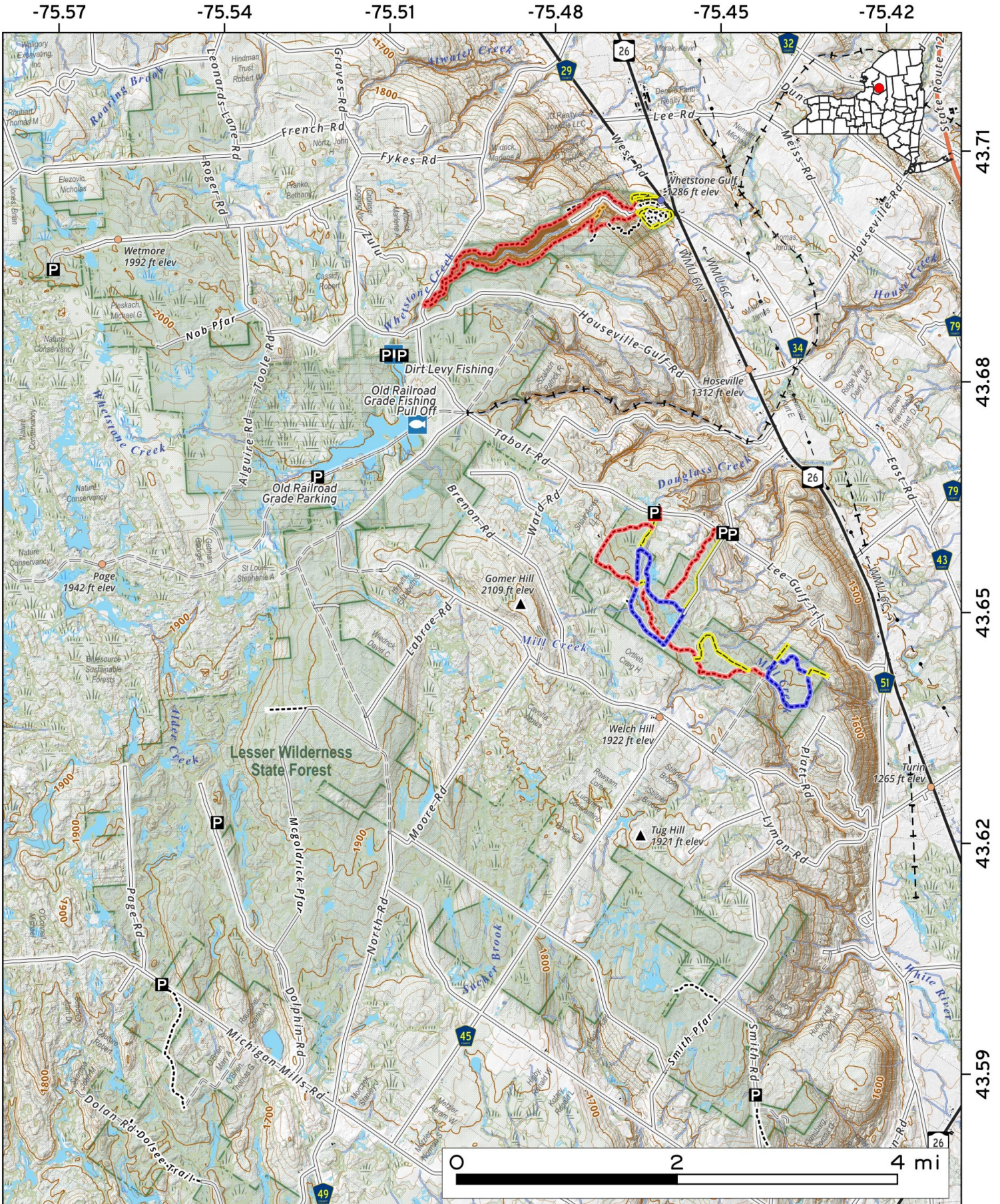


Lesser Wilderness State Forest spans 13,793 acres atop New York's Tug Hill Plateau. This rugged landscape features high-elevation wetlands, poor soils, and extreme winters with over 300 inches of snow. Visitors enjoy 15 miles of roads and the scenic Carpenter Road Trail System for hiking, skiing, and snowmobiling.



Map created by Andy Arthur on 2/12/2026 in QGIS 3.44.7-Solothurn. Data: NYS GIS and NYS DEC. More at andyarthur.org.



The Lesser Wilderness Cross Country Ski Trails. This state has forest has several trails that are suitable for cross-country skiing. The area has a reputation for receiving heavy snowfall, making it an excellent location for winter sports.

Map created by Andy Arthur on 10/22/2025 in QGIS 3.44.3-Solothurn. Contains NYS GIS and DEC data with additional campsites added by Andy. More maps at andyarthur.org.



-75.480 -75.470 -75.460 -75.450 -75.440 -75.430 -75.420 -75.410

