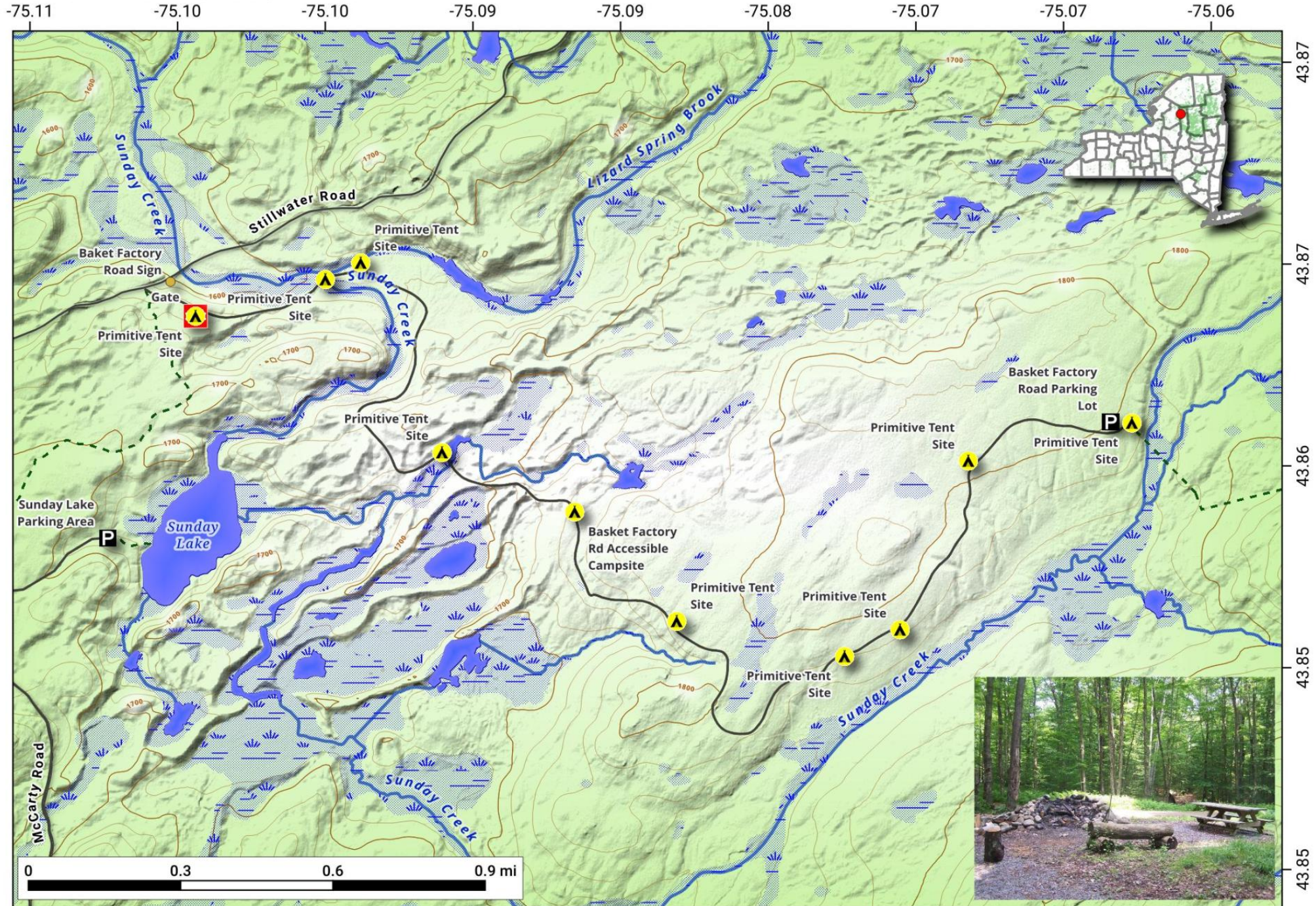


# Basket Factory Road Campsites.

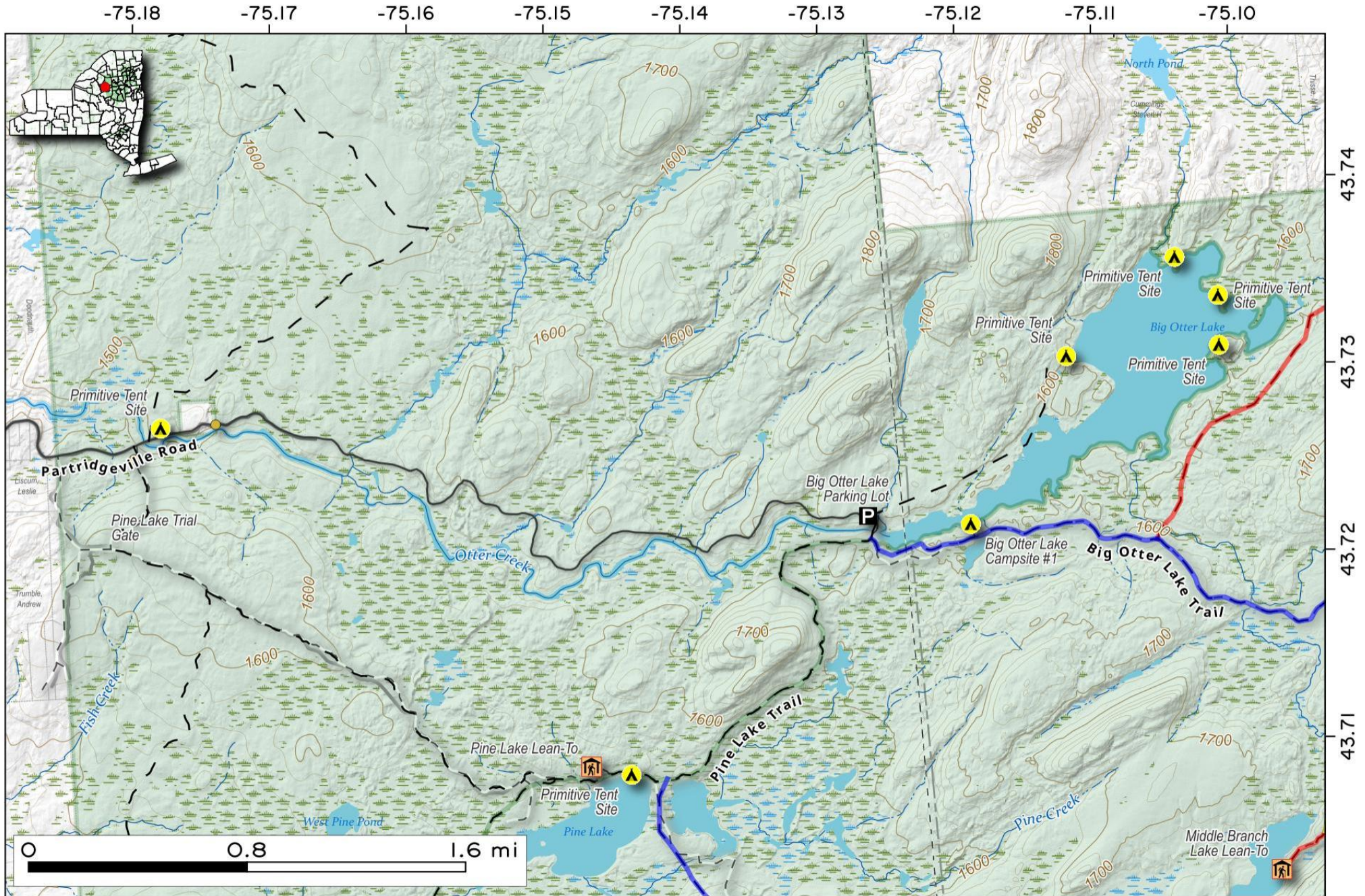
There are 10 campsites spread out along the Basket Factory Road, which is located on Stillwater Road, a few miles west of lake of same name.

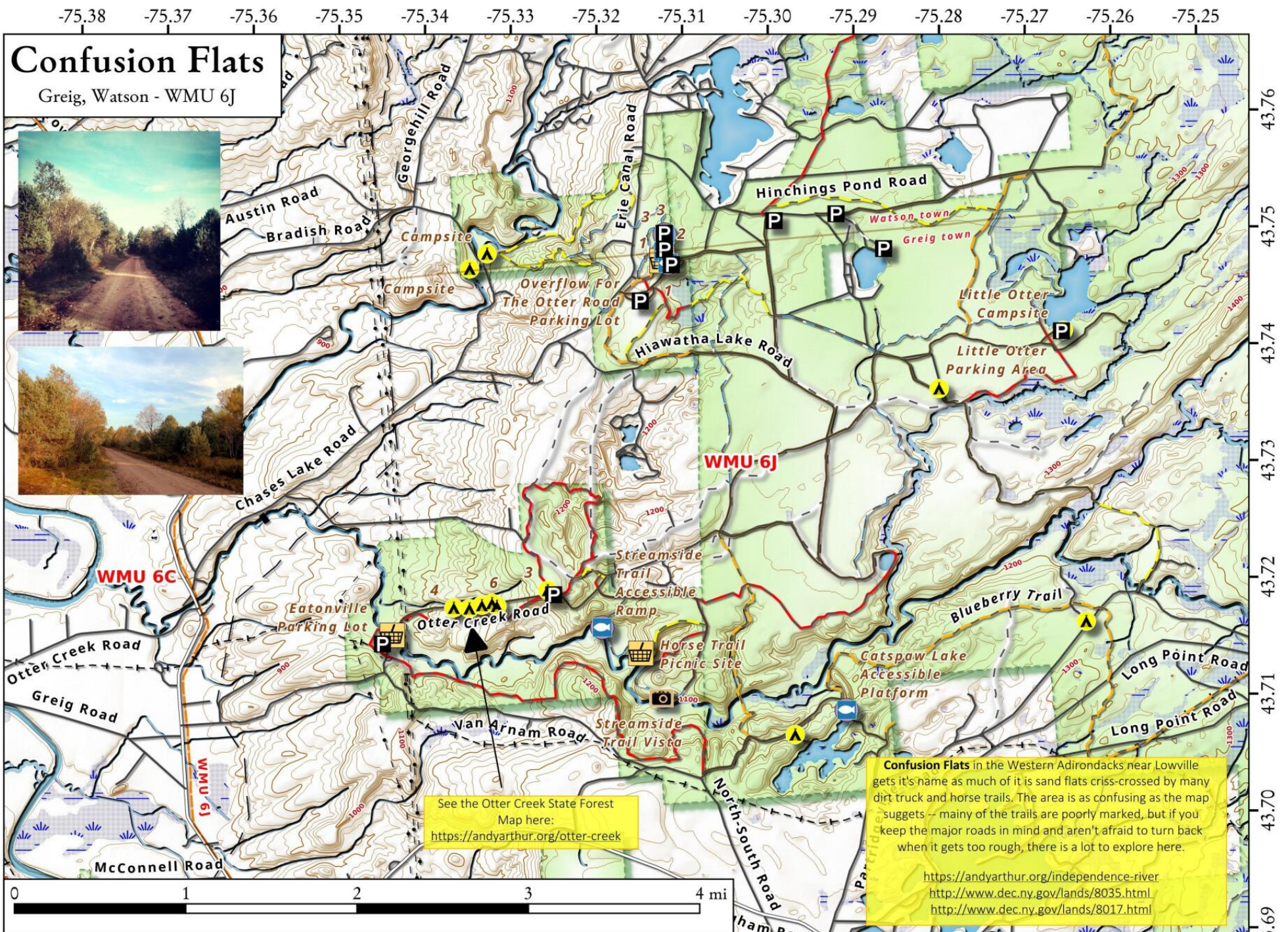
Map created by Andy Arthur on 6/18/2024 in QGIS 3.34.7-Prizren. Contains DEC Trails/Assets, Additional Campsites/Trails by Andy other data ©OpenStreetMap Data, OSM Maintainers. More maps at [andyarthur.org](http://andyarthur.org).



**Big Otter Lake Road**. 3 1/2 miles beyond the asphalt lays Big Otter Lake on the edge of the Ha De Ron Dah Wilderness. This is a rough truck trail but you can park near the end of asphalt (gated in the spring time) back to the remote lake.

Map created by Andy Arthur on 4/17/2025 in QGIS 3.34.15-Prizren. Contains US Forest Service Base Map, NYS DEC data with additional campsites added by Andy. More maps at [andyarthur.org](http://andyarthur.org).





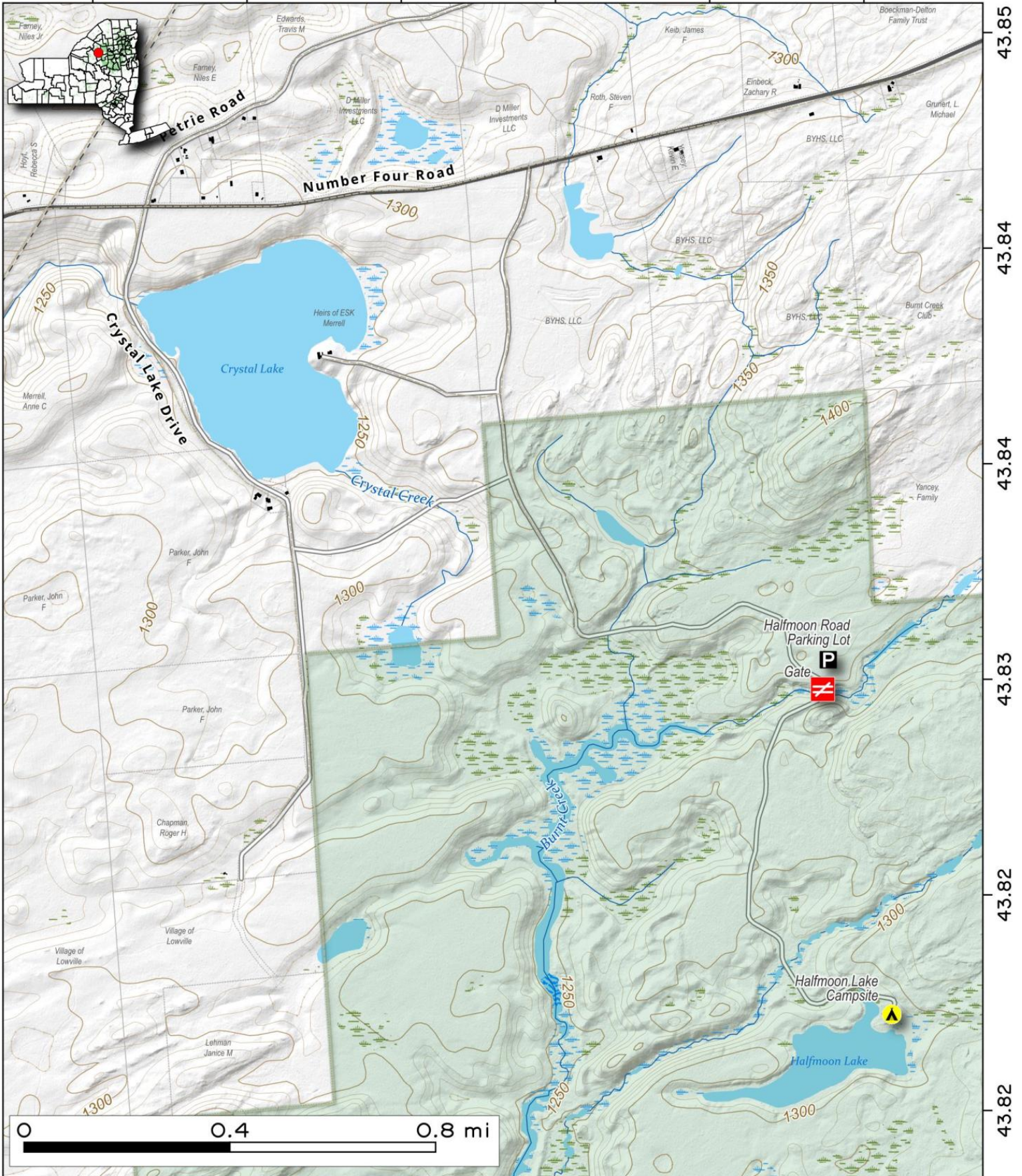
Confusion Flats Map, November 18, 2018 by AndyArthur.org in QGIS 3.4.0-Madeira and Python. Street Map is Copyright © OpenStreetMap contributors, CC BY-SA. NYSDEC Data: LiDAR/DEM, Borders, ADK Wetlands, Trails, Assets. True North. 1 inch = 0.7 miles. Projection: NAD83 / UTM zone 18N. Coordinates: 0.01° latitude-longitude (WGS84). Contours are 20 feet.

**Halfmoon Lake.** Past Crystal Lake in Number Four, here is a rough dirt road with a sign to Halfmoon Lake. Take it 2 miles south to a parking area, then follow the gated old woods road back to Halfmoon Lake.



Map created by Andy Arthur on 5/6/2025 in QGIS 3.34.15-Prizren. Contains US Forest Service Base Map, NYS DEC data with additional campsites added by Andy. More maps at [andyarthur.org](http://andyarthur.org).

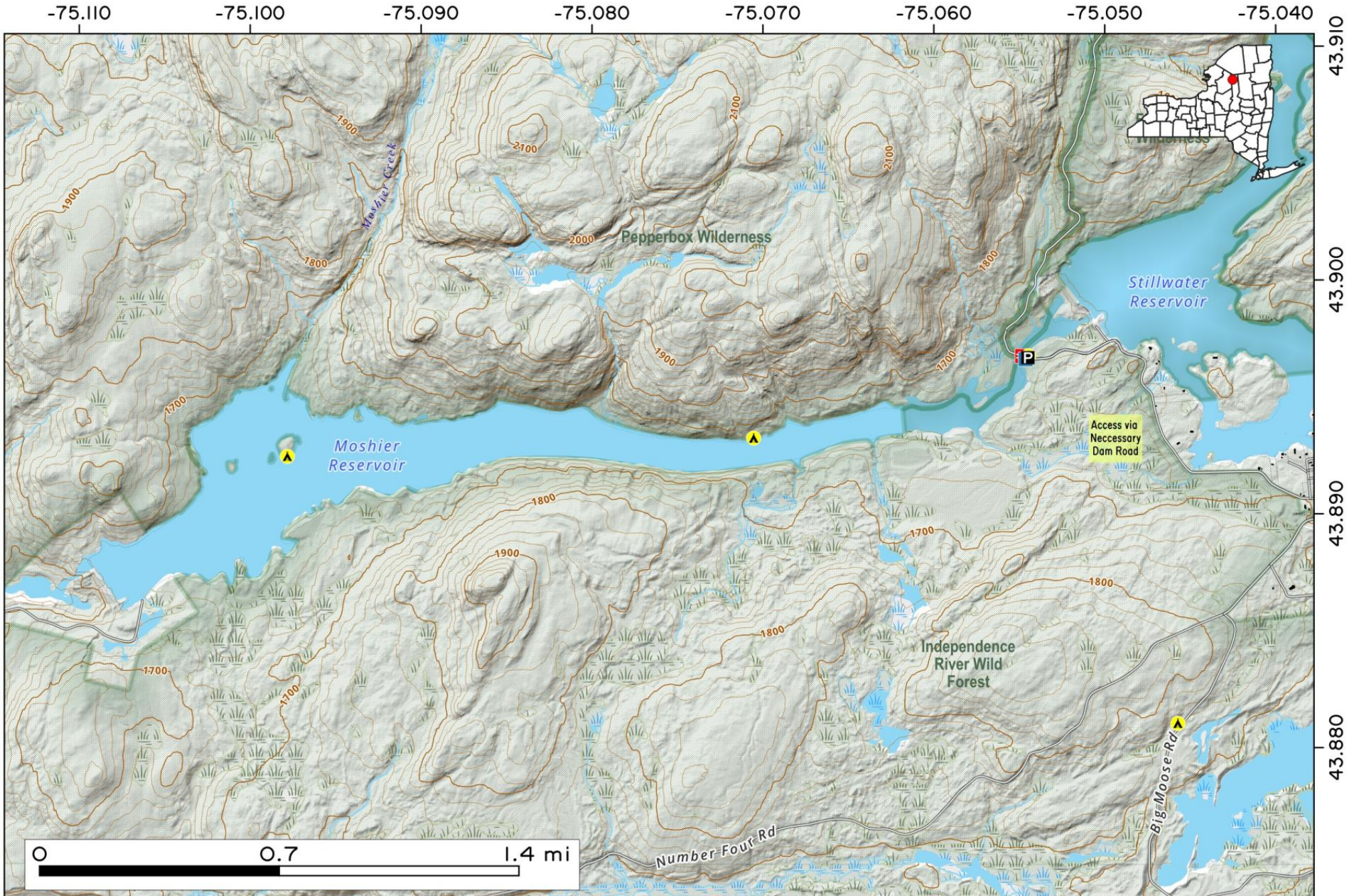
-75.28      -75.28      -75.27      -75.26      -75.26      -75.25



43.85  
43.84  
43.84  
43.83  
43.82  
43.82

Moshier Reservoir is located below the Stillwater Reservoir along a dammed up portion of the Beaver River. Over three miles long, it's often quieter than Stillwater Lake for small watercraft.

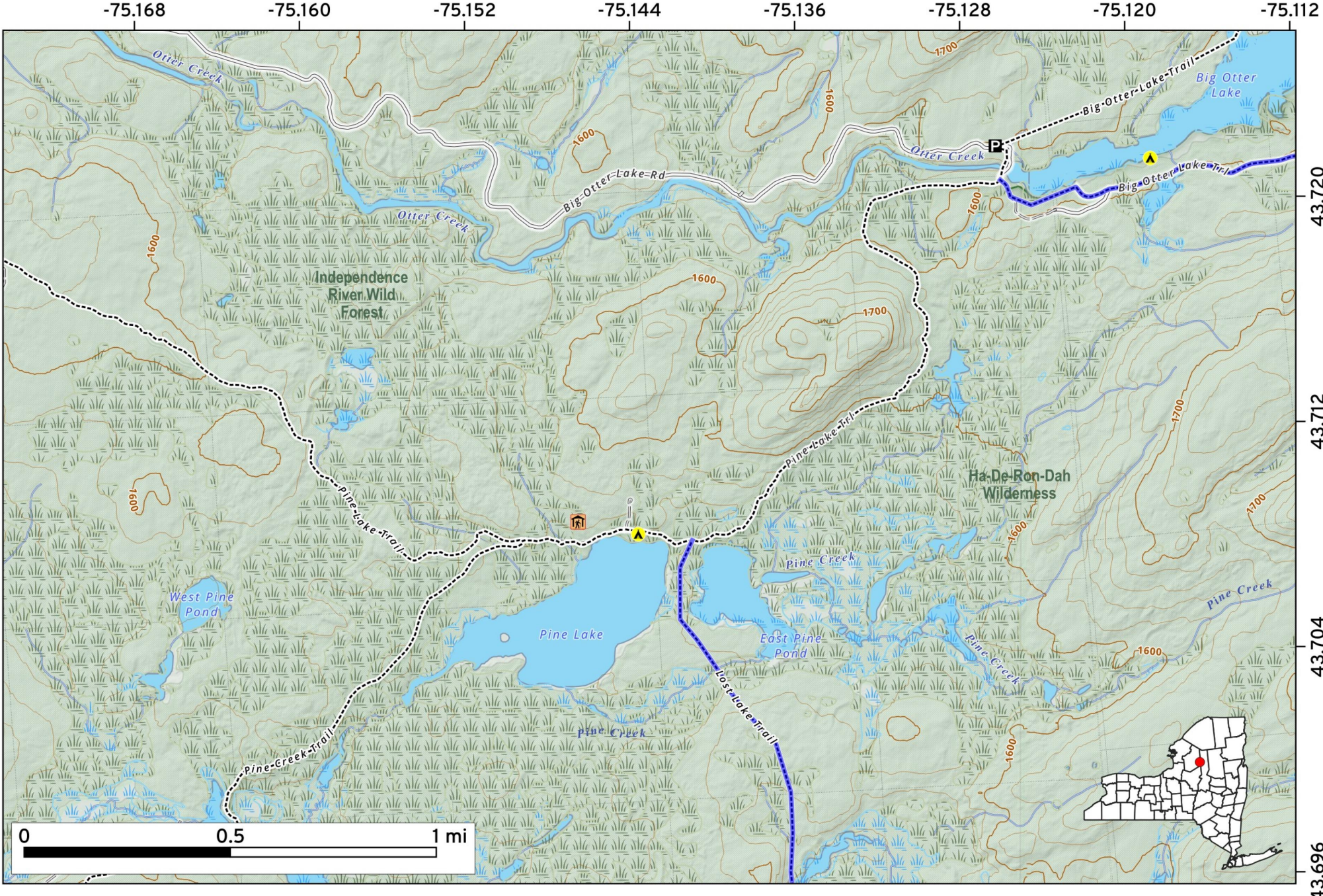
Map created by Andy Arthur on 10/9/2025 in QGIS 3.44.3-Solothurn. Contains NYS GIS and DEC data with additional campsites added by Andy. More maps at [andyarthur.org](http://andyarthur.org).



**Pine Lake.** From Big Otter Lake, take the Pine Lake Trail 1 1/2 miles back to Pine Lake. The Big Otter Lake Parking area is 3 1/2 miles from the Forest Preserve Boundary, it is a rough seasonal use road that requires a high-clearance vehicle.



Map created by Andy Arthur on 2/5/2026 in QGIS 3.44.7-Solothurn. Data: NYS GIS and NYS DEC. More at [andyarthur.org](http://andyarthur.org).



**Sunday Lake.** Located off McCarty Road on way to Stillwater Reservoir from Lowville, Sunday Lake is 138 acres with a 1/3rd mile portage to lake from the parking area. Camping opporunities located on Basket Factory which is beyond McCarty Road.

Map created by Andy Arthur on 5/6/2025 in QGIS 3.34.15-Prizren. Contains US Forest Service Base Map, NYS DEC data with additional campsites added by Andy. More maps at [andyarthur.org](http://andyarthur.org).

