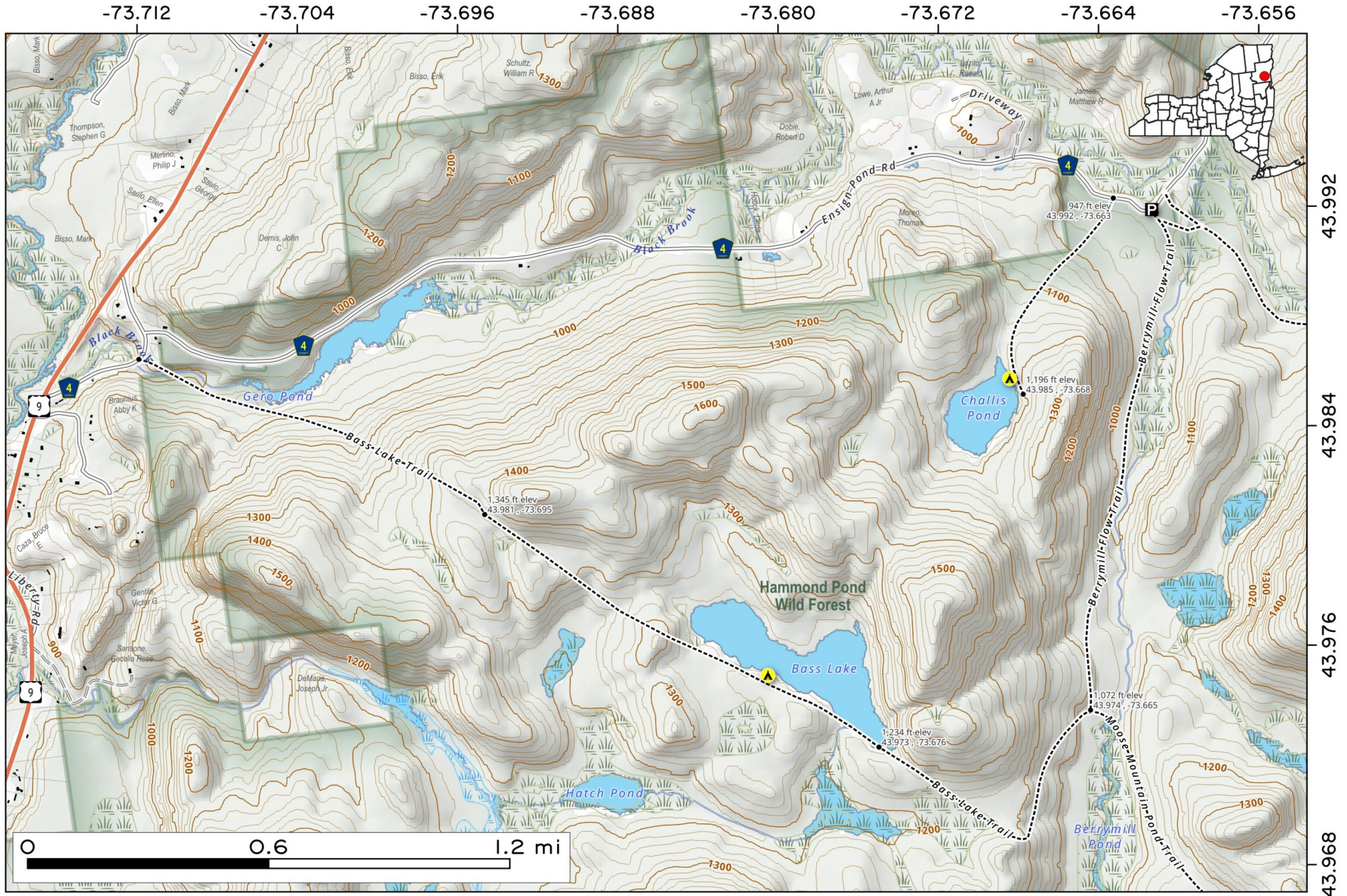


Bass Lake. Park off the triangle at Moria Road, off of US 9 a little ways north of North Hudson, hike back roughly 2 miles to a designated campsite on Bass Lake. Another half mile beyond there is Berrymill Flow, a formerly dammed up section of the Berry Mill Brook.

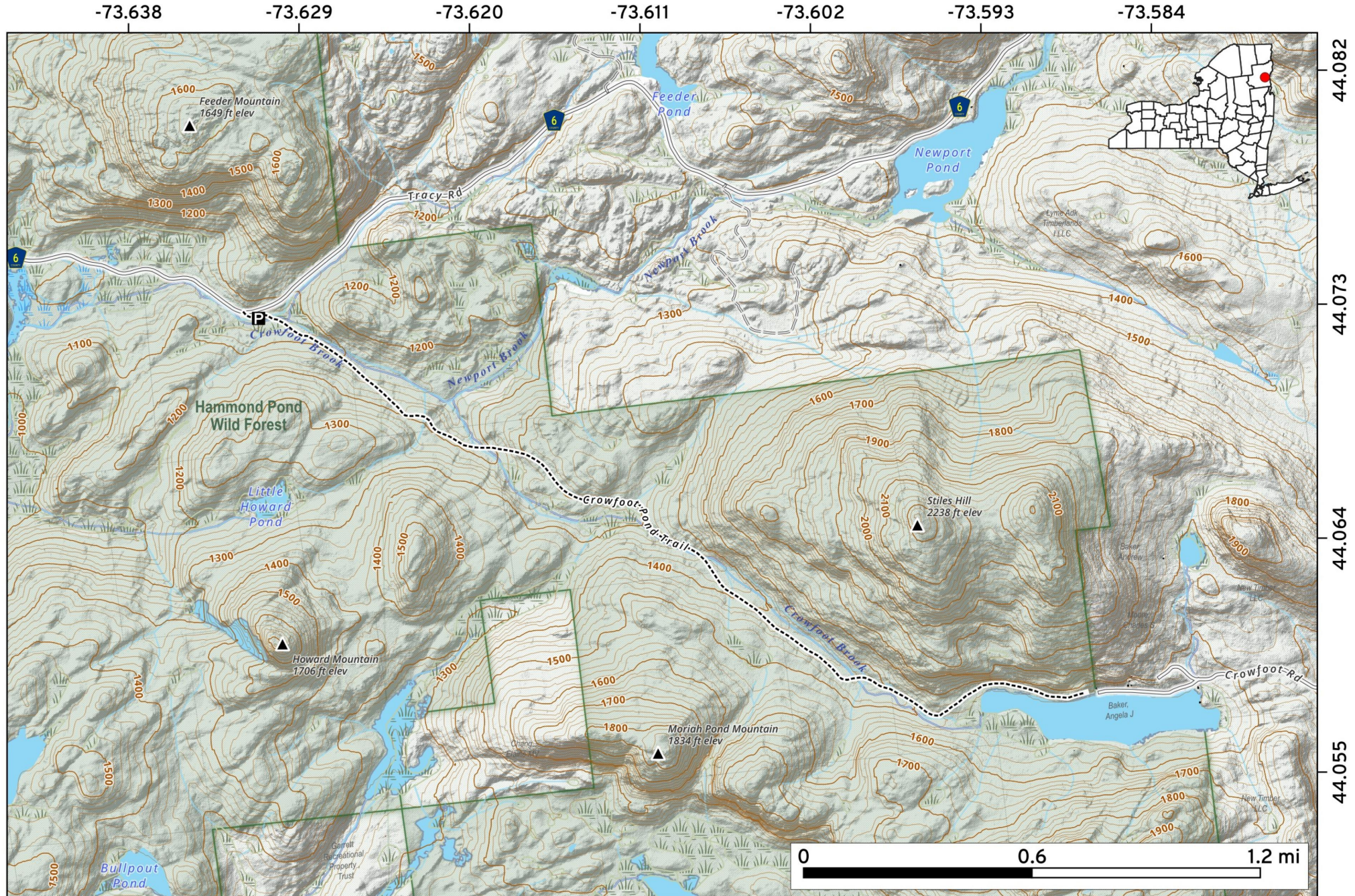
Map created by Andy Arthur on 1/13/2026 in QGIS 3.44.6-Solothurn. Contains NYS GIS and DEC data with additional campsites added by Andy. More maps at andyarthur.org.



The **Crowfoot Pond Trail**, located in the Hammond Pond Wild Forest, is a gentle 5-mile round-trip hike through a lush evergreen forest. The path follows Crowfoot Brook, crossing several timber bridges. It features a steady, easy grade that leads to a peaceful pond bordered by private property.

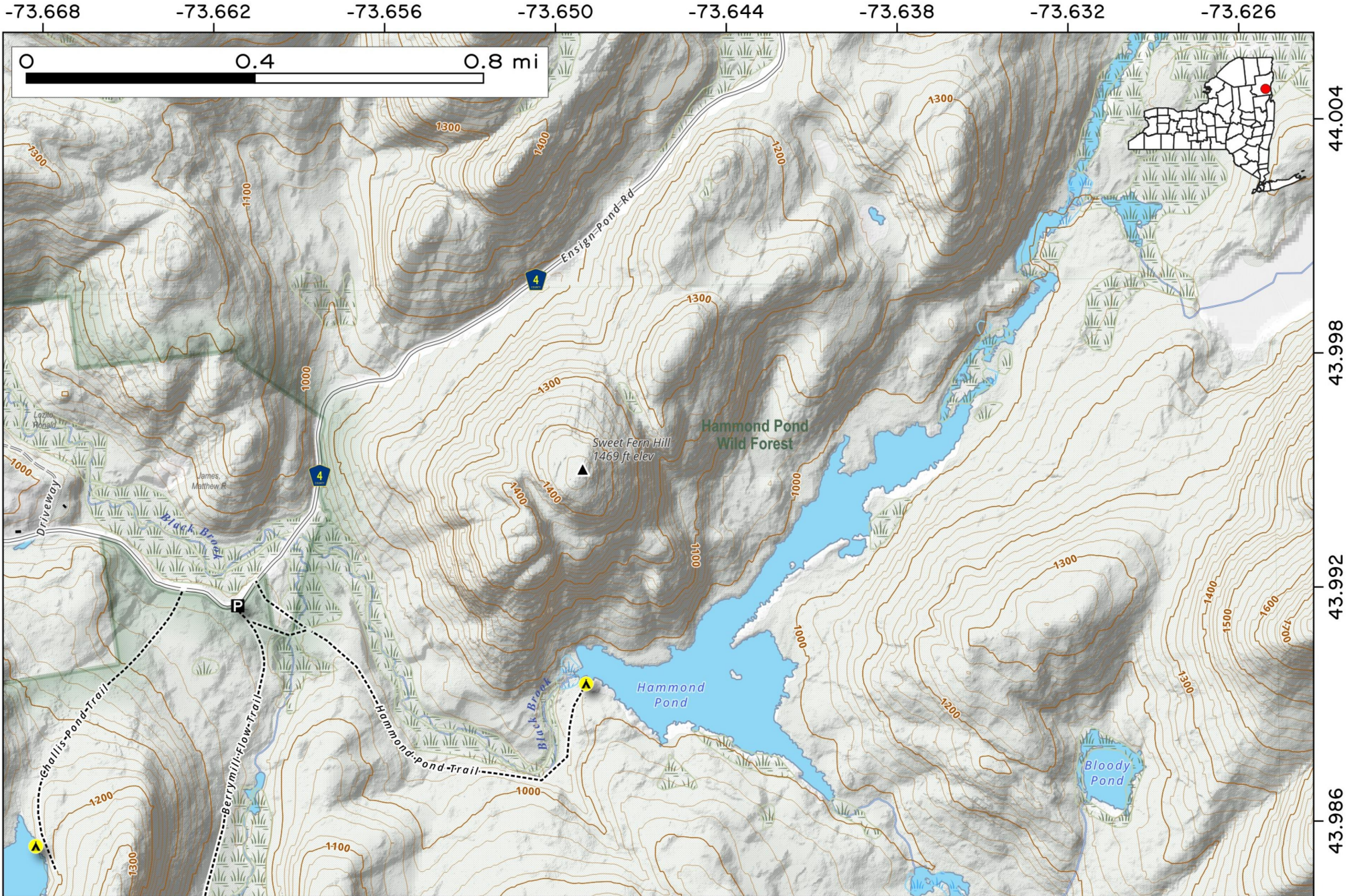


Map created by Andy Arthur on 2/27/2026 in QGIS 3.44.7-Solothurn. Data: NYS GIS and NYS DEC. More at andyarthur.org.



Hammond Pond Trail is a quick, relatively flat trail along an old woods road back to Hammond Pond.

Map created by Andy Arthur on 1/6/2026 in QGIS 3.44.6-Solothurn. Contains NYS GIS and DEC data with additional campsites added by Andy. More maps at andyarthur.org.

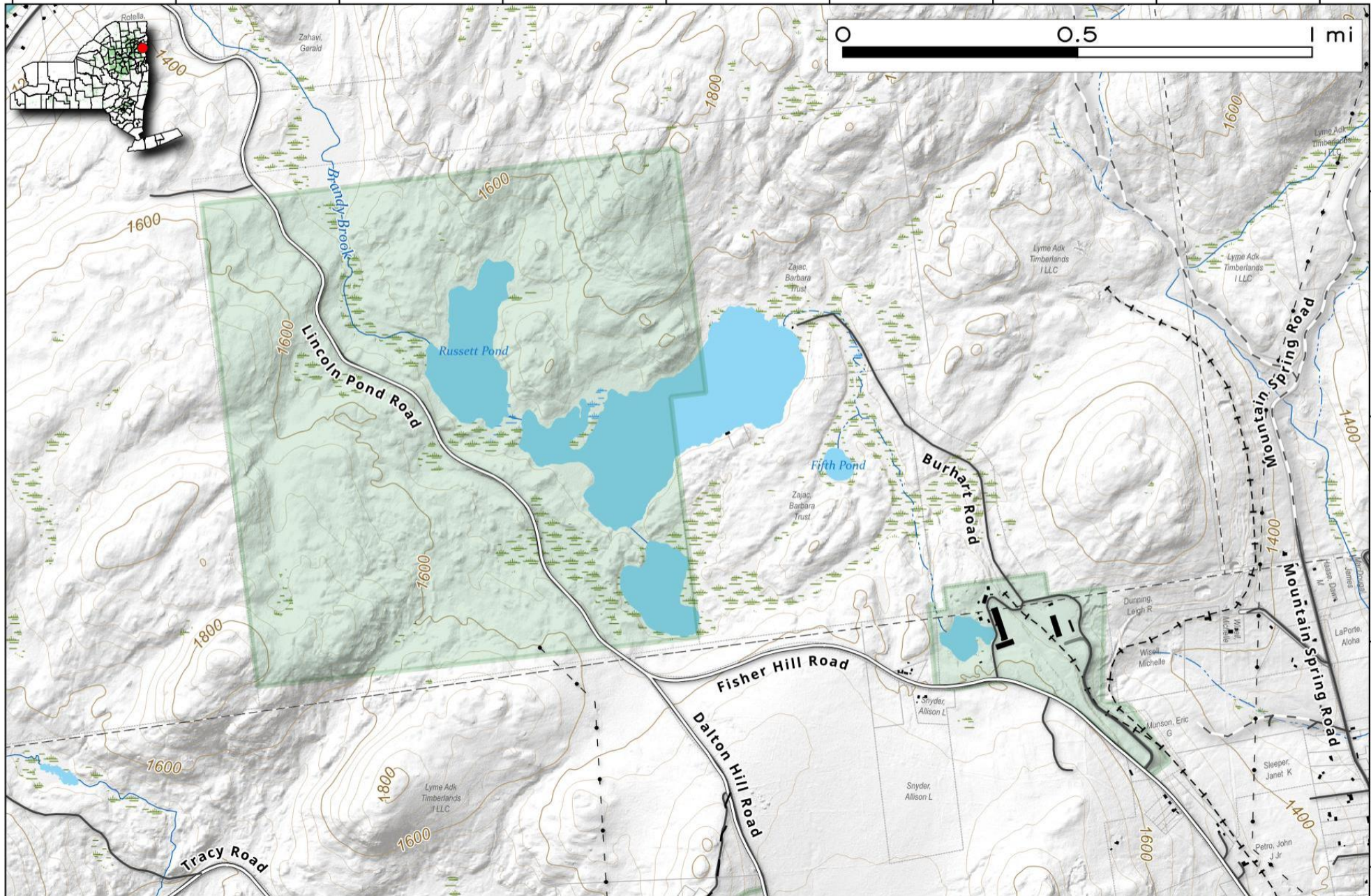


Mill, Russett And Tanaher Ponds. Ponds along the Brandy Brook south of the Lincoln Pond Campground.

Map created by Andy Arthur on 4/9/2025 in QGIS 3.34.15-Prizren. Contains US Forest Service Base Map, NYS DEC data with additional campsites added by Andy. More maps at andyarthur.org.



-73.58 -73.57 -73.56 -73.56 -73.55 -73.54 -73.53 -73.53 -73.52

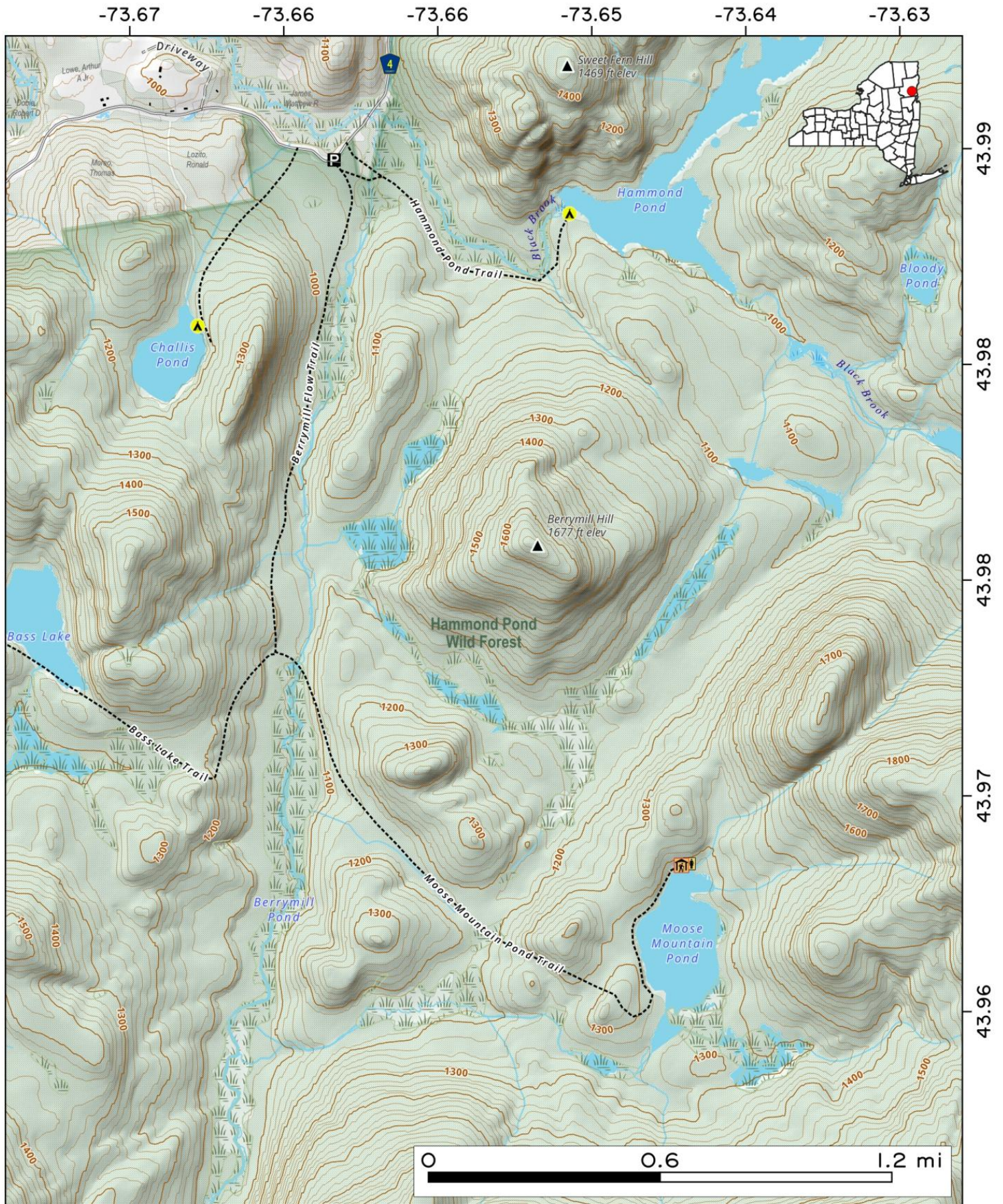


44.12
44.11
44.11
44.10

Moose Mountain Pond. From the Hammond Pond Parking Area on Moriah Road (4 miles east of US 9), head south on the Berrymill Flow Trail. The flow is roughly 1 1/2 miles south of the parking area, with only a very slight incline. Head south-east on the Mouse Mountain Pond Trail another 1 1/2 miles to reach the lake, which contains a lean-to on the north shore. Slight incline, gaining 200 feet before dropping over a ridge to the pond.



Map created by Andy Arthur on 10/23/2025 in QGIS 3.44.3-Solothurn. Contains NYS GIS and DEC data with additional campsites added by Andy. More maps at andyarthur.org.



North Hudson - Moriaville Road Trails. Hikes include Bass Lake Trail, Hammond Pond, Berry Mill Flow just a short distance from US 9, a few miles north of Blue Ridge Road/Frontier Town Exit on the Northway.

Map created by Andy Arthur on 11/25/2025 in QGIS 3.44.4-Solothurn. Contains NYS GIS and DEC data with additional campsites added by Andy. More maps at andyarthur.org.

