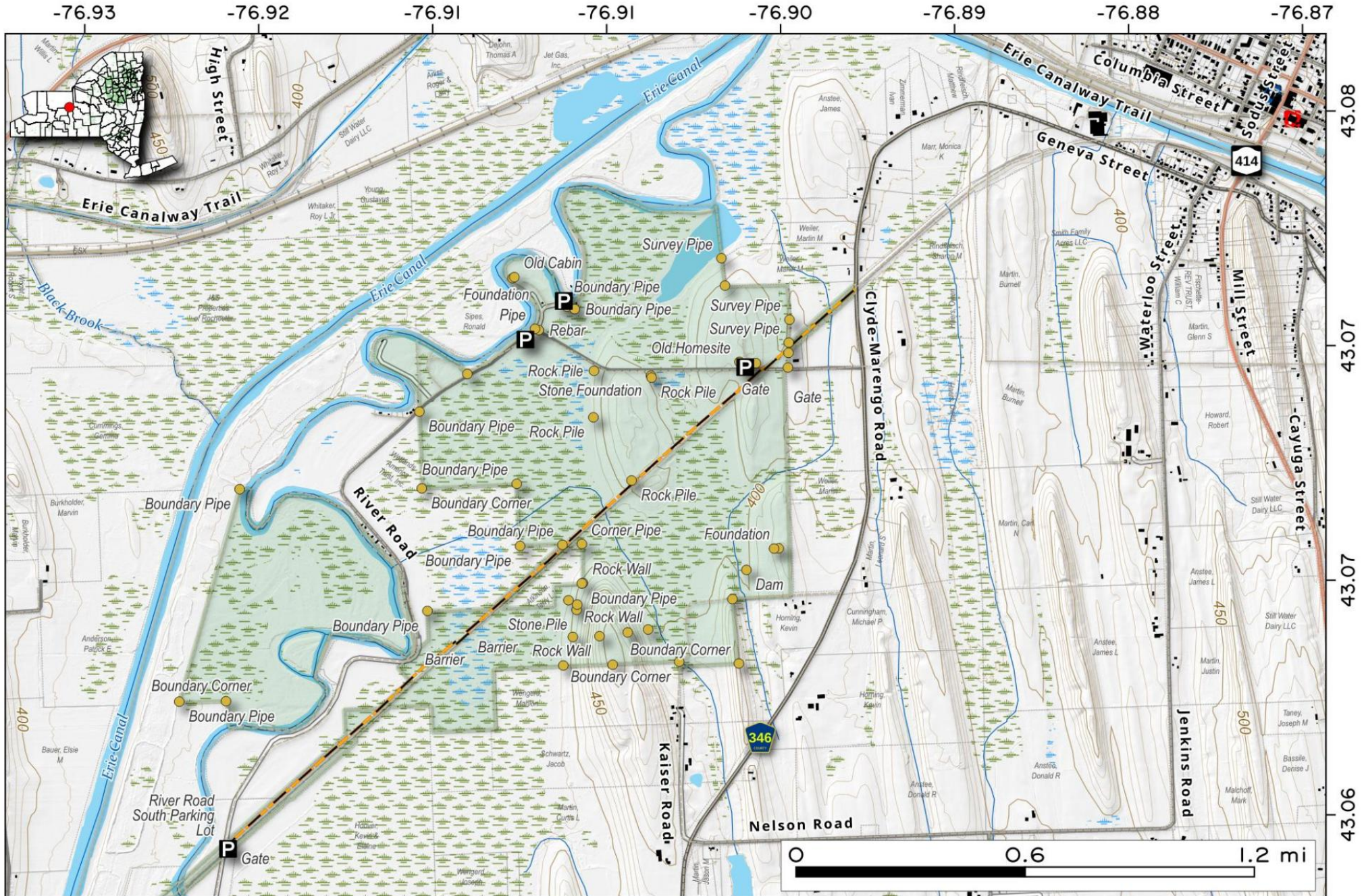


# Galen WMA . Around 800 acres of protected Galen Marsh, locally known as the Marengo Swamp surrounded by agricultural lands along the Barge Canal outside of Clyde.

Map created by Andy Arthur on 3/25/2025 in QGIS 3.34.15-Prizren. Contains US Forest Service Base Map, NYS DEC data with additional campsites added by Andy. More maps at [andyarthur.org](http://andyarthur.org).



Galen WMA  
Aerial Photo

Andy Arthur  
May 6, 2026

0.5 1 mi

