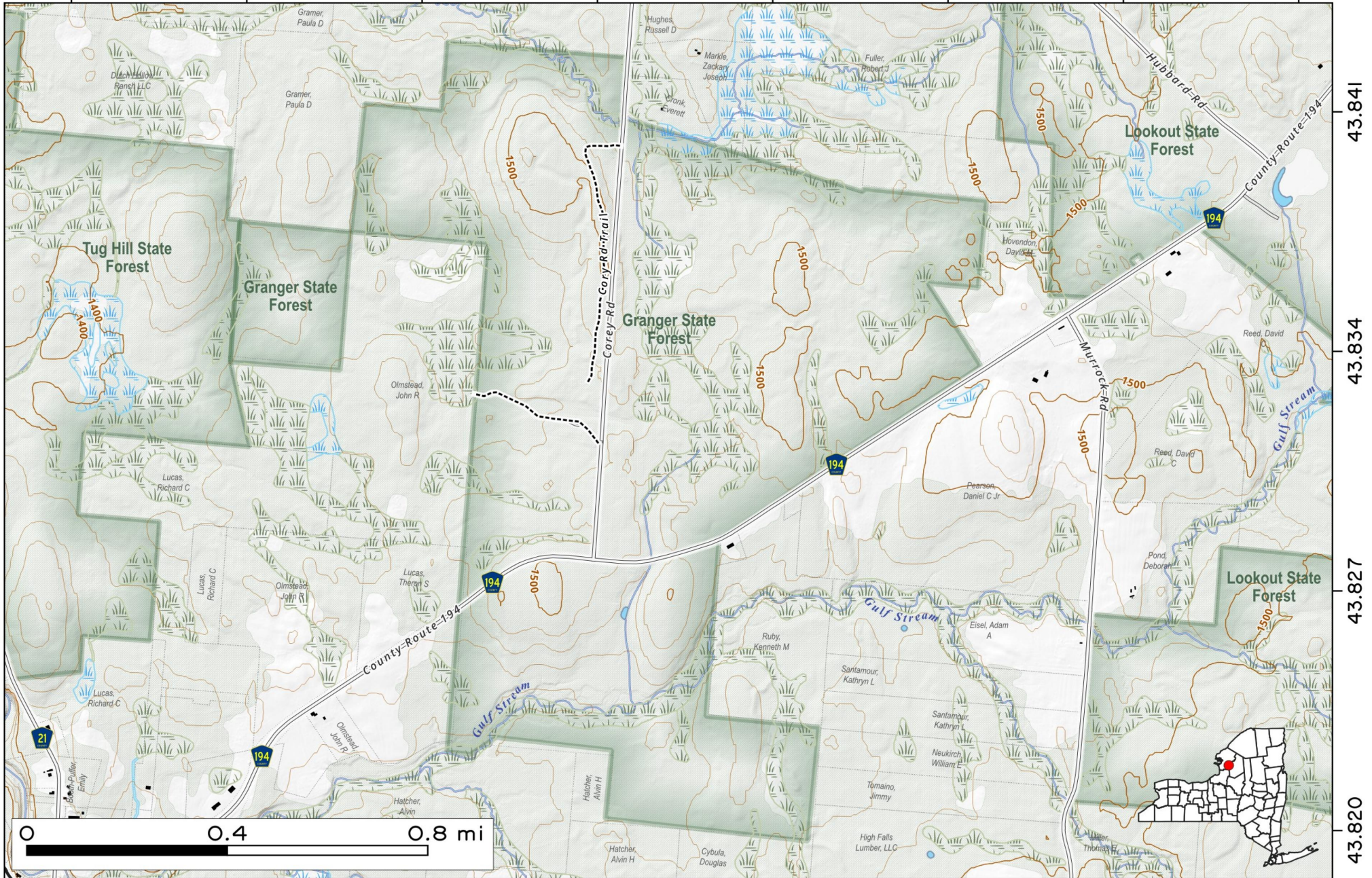


Granger State Forest. 734-acre state forest located between Tug Hill State Forest and Lookout State Forest on the Tug Hill.

Map created by Andy Arthur on 1/8/2026 in QGIS 3.44.6-Solothurn. Contains NYS GIS and DEC data with additional campsites added by Andy. More maps at andyarthur.org.



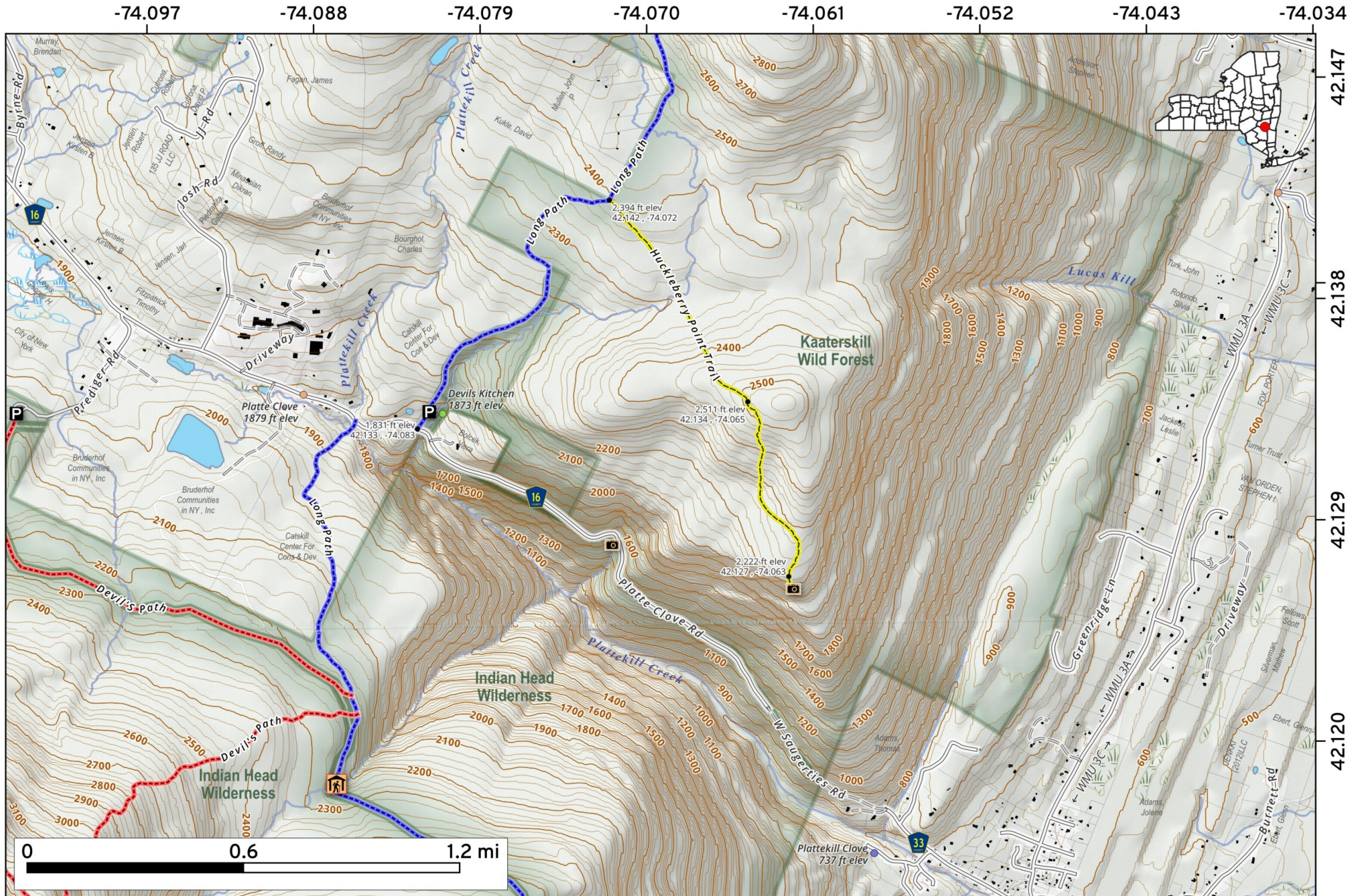
-75.817 -75.810 -75.803 -75.796 -75.789 -75.782 -75.775 -75.768



43.841
43.834
43.827
43.820

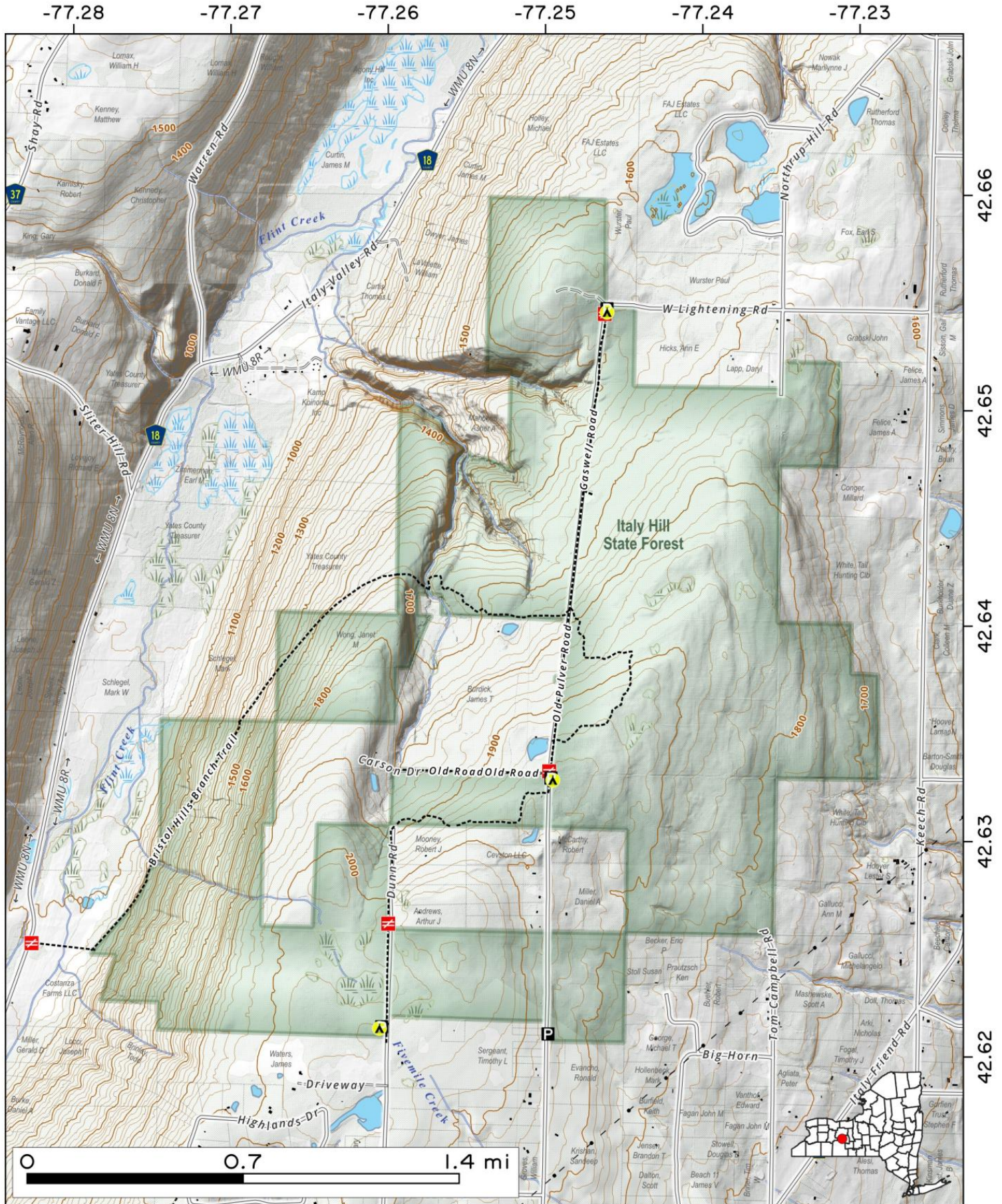
Huckleberry Point Trail overlooks the Platte Clove Road. Access from the Platte Clove above the seasonal use gate. A 4½ mile that hike with a modest elevation change that takes roughly 3 years.

Map created by Andy Arthur on 1/27/2026 in QGIS 3.44.6-Solothurn. Data: NYS GIS and NYS DEC. More at andyarthur.org.



Italy Hill State Forest, in New York's Finger Lakes region, is an 1,899-acre forest offering rustic recreation and diverse wildlife habitats. Managed for timber, wildlife, and water quality, it provides opportunities for hiking, hunting, snowmobiling, and nature watching. It crossed by the Bristol Hills Trail.

Map created by Andy Arthur on 11/6/2025 in QGIS 3.44.4-Solothurn. Contains NYS GIS and DEC data with additional campsites added by Andy. More maps at andyarthur.org.



Peter Scott Wetlands. NYS DEC owns roughly 400 acres of wetlands north of Horseshoe Island on Oneida River.



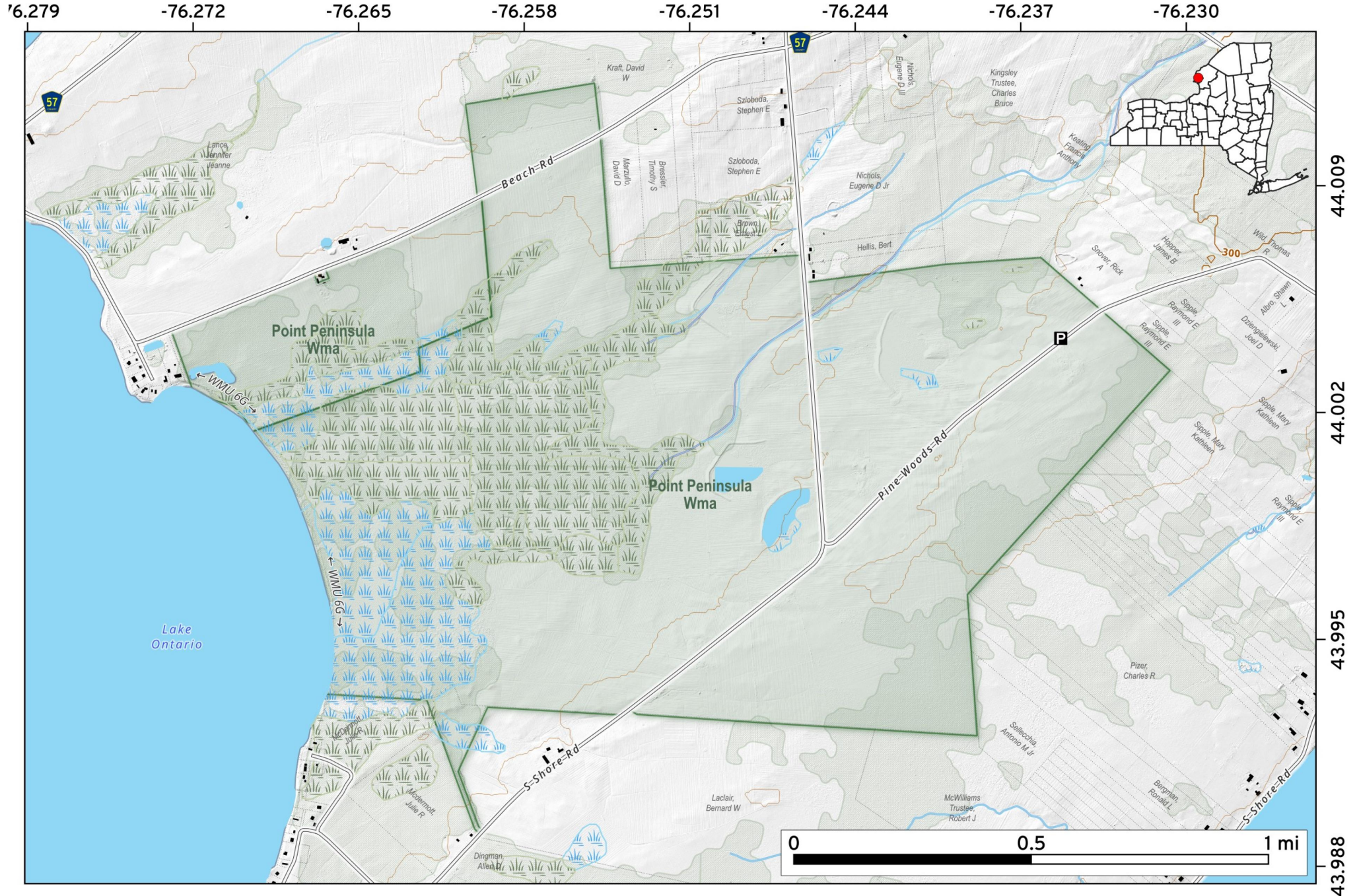
Map created by Andy Arthur on 5/28/2025 in QGIS 3.34.15-Prizren. Contains US Forest Service Base Map, NYS DEC data with additional campsites added by Andy. More maps at andyarthur.org.



Point Peninsula WMA in Jefferson County is a 1,086-acre Bird Conservation Area on Lake Ontario. It features rare arctic-breeding raptors, dunes, and marshes. Visitors utilize it for deer hunting, trapping, and observing migratory birds like snowy owls.



Map created by Andy Arthur on 2/26/2026 in QGIS 3.44.7-Solothurn. Data: NYS GIS and NYS DEC. More at andyarthur.org.

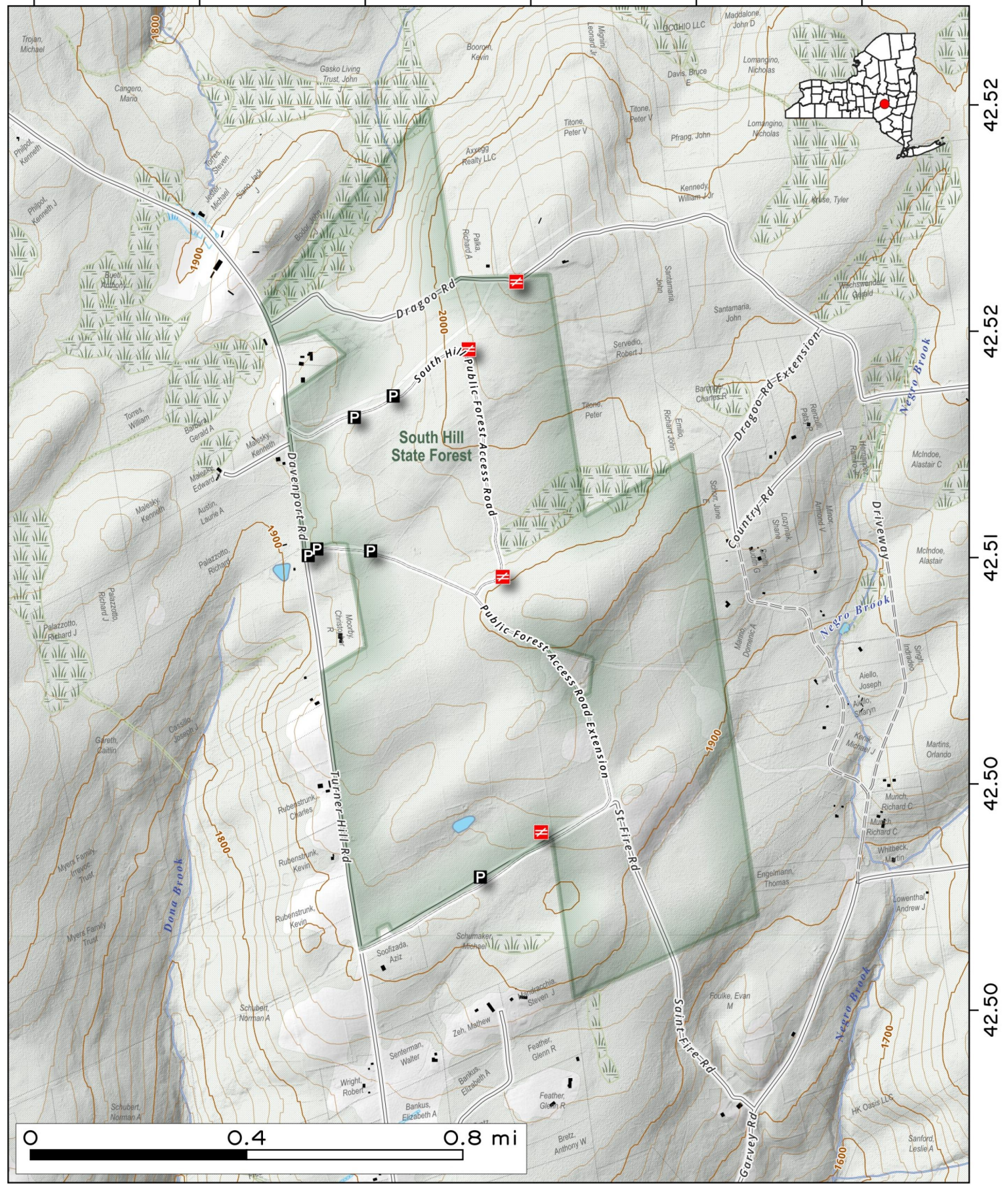


South Hill State Forest is located off Davenport Road in the hills of Western Catskills.

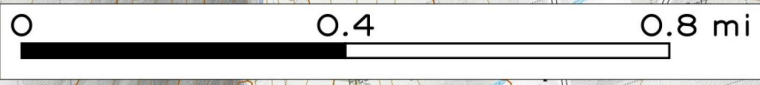
Map created by Andy Arthur on 1/6/2026 in QGIS 3.44.6-Solothurn. Contains NYS GIS and DEC data with additional campsites added by Andy. More maps at andyarthur.org.



-74.87 -74.86 -74.86 -74.85 -74.84 -74.84



42.52
42.52
42.51
42.50
42.50



Urbana and Pig Tail Hollow State Forest. 2,690 acre Urbana and the 69 acre Pig Tail Hollow State Forest are located in the uplands above Keuka Lake in the western Finger Lakes.

Map created by Andy Arthur on 1/6/2026 in QGIS 3.44.6-Solothurn. Contains NYS GIS and DEC data with additional campsites added by Andy. More maps at andyarthur.org.



-77.296 -77.280 -77.264 -77.248 -77.232 -77.216 -77.200

