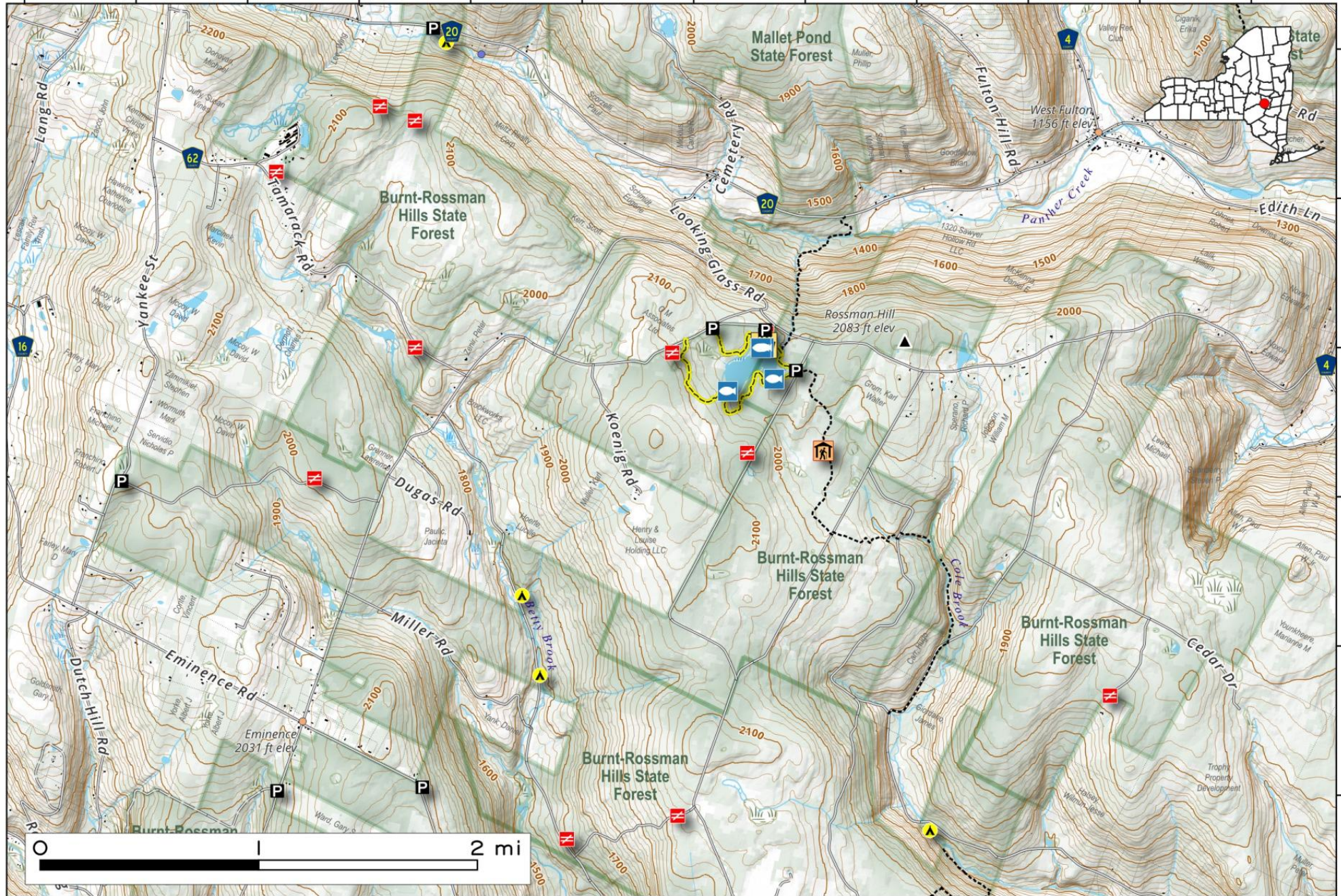


**Burnt-Rossman Hills State Forest (Northern Portion).** The Burnt-Rossman Hills State Forest consists of 10,568 acres - shown on two maps on this blog. A recreation area located at Looking Glass Pond contains a picnic area, fishing piers, viewing platforms, and a boat dock. There are also six primitive campsites and a lean-to scattered across the property. A section of the Long Path passes through the state forest as well.

Map created by Andy Arthur on 10/6/2025 in QGIS 3.44.3-Solothurn. Contains NYS GIS and DEC data with additional campsites added by Andy. More maps at [andyarthur.org](http://andyarthur.org).



-74.560 -74.550 -74.540 -74.530 -74.520 -74.510 -74.500 -74.490 -74.480 -74.470 -74.460 -74.450



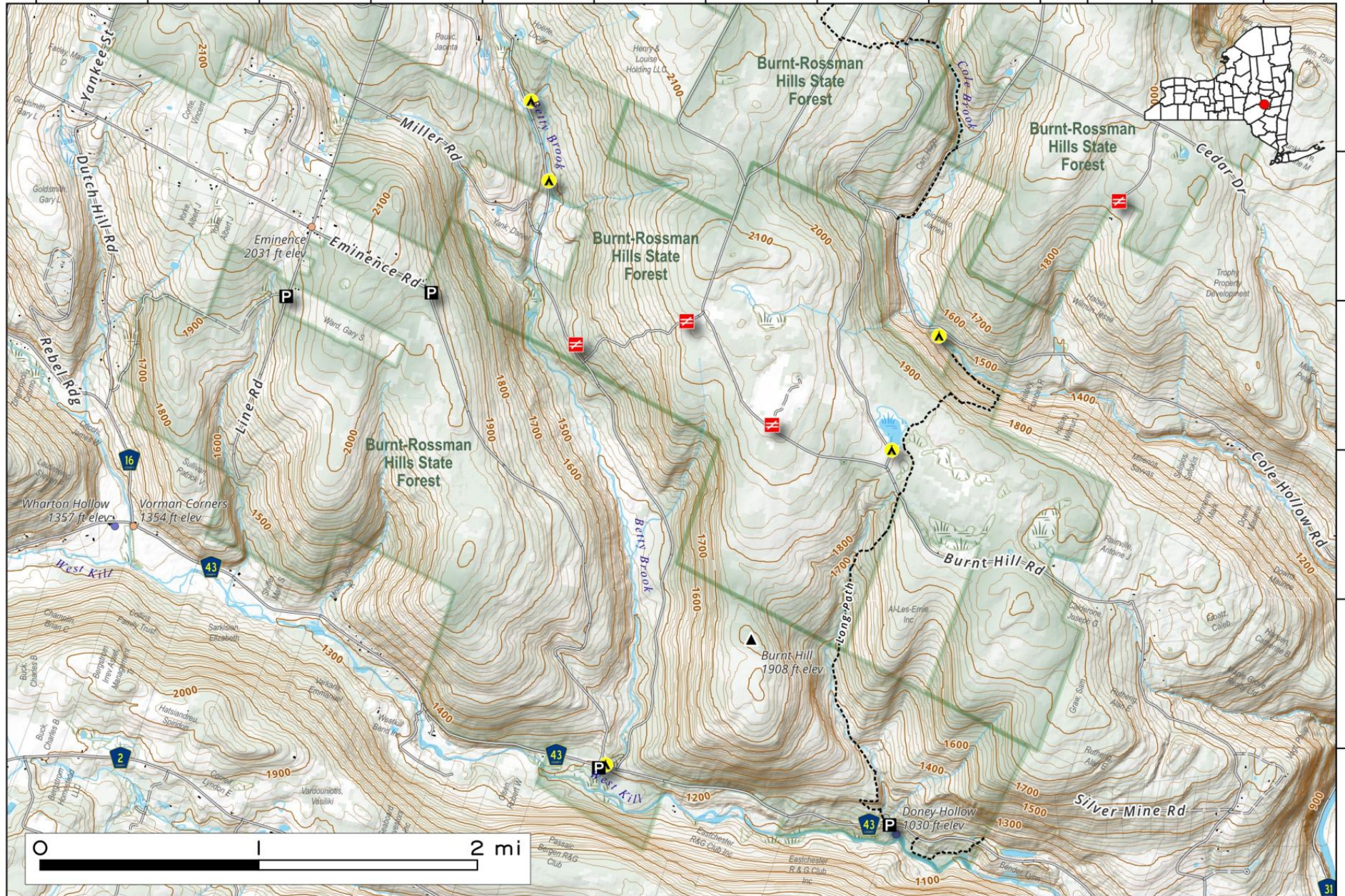
42.570  
42.560  
42.550  
42.540  
42.530  
42.520

**Burnt-Rossman Hills State Forest (Southern Portion).** The Burnt-Rossman Hills State Forest consists of 10,568 acres - shown on two maps on this blog. A recreation area located at Looking Glass Pond contains a picnic area, fishing piers, viewing platforms, and a boat dock. There are also six primitive campsites and a lean-to scattered across the property. A section of the Long Path passes through the state forest as well.

Map created by Andy Arthur on 10/6/2025 in QGIS 3.44.3-Solothurn. Contains NYS GIS and DEC data with additional campsites added by Andy. More maps at [andyarthur.org](http://andyarthur.org).



-74.560 -74.550 -74.540 -74.530 -74.520 -74.510 -74.500 -74.490 -74.480 -74.470 -74.460 -74.450



42.530

42.520

42.510

42.500

42.490