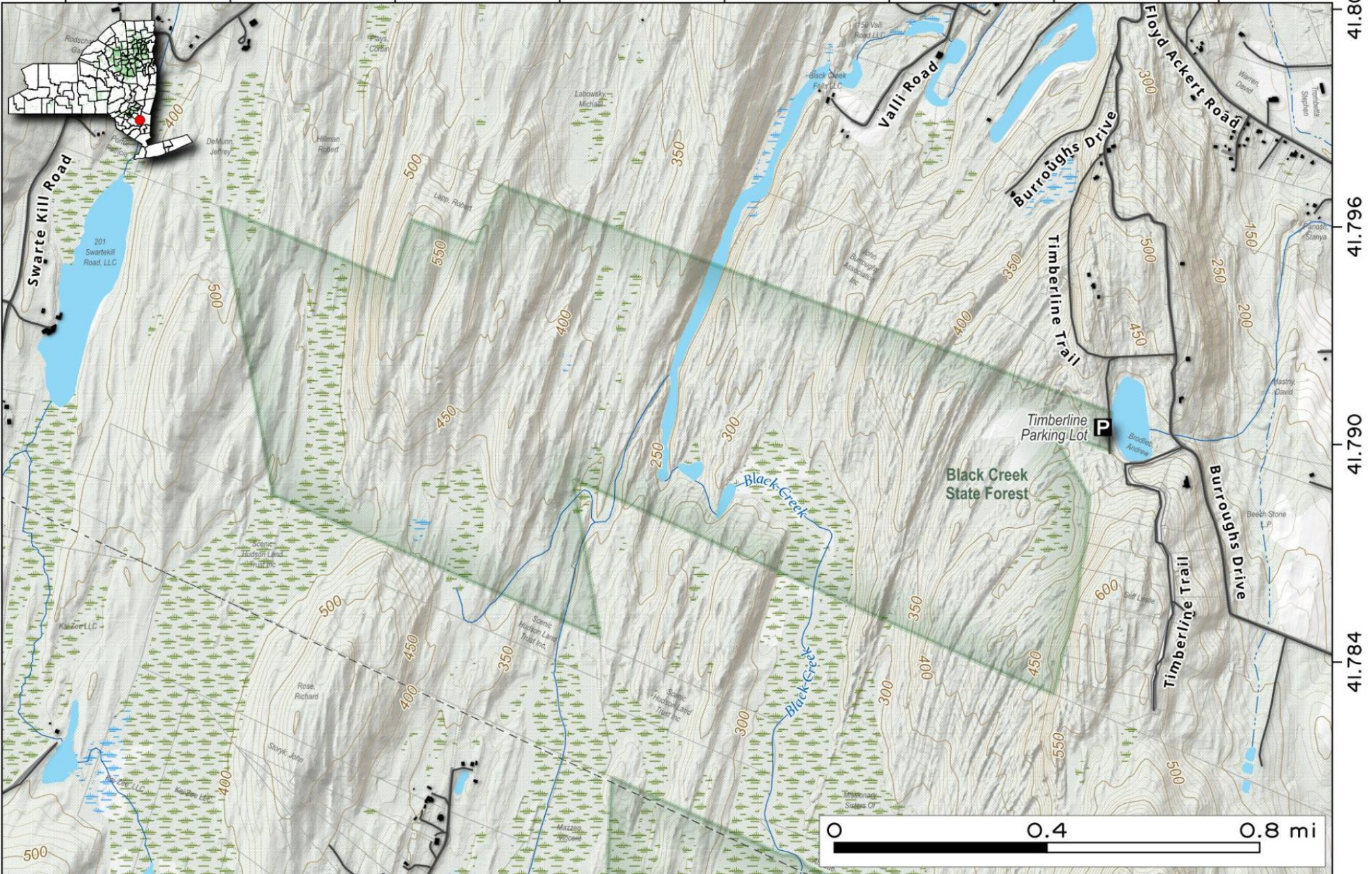


Black Creek State Forest (Ulster). State lands along the Black Creek, tributary of the Hudson River in Kingston. One of several protected parcels along the creek

Map created by Andy Arthur on 6/20/2025 in QGIS 3.34.15-Prizren. Contains US Forest Service Base Map, NYS DEC data with additional campsites added by Andy. More maps at andyarthur.org.



-74.010 -74.004 -73.998 -73.992 -73.986 -73.980 -73.974 -73.968



Black Creek State Forest (Town of Norway). The 998-acre Black Creek State Forest features hilly, scenic views with a variety of streams, swamps and ponds.

Map created by Andy Arthur on 2/12/2026 in QGIS 3.44.7-Solothurn. Data: NYS GIS and NYS DEC. More at andyarthur.org.

