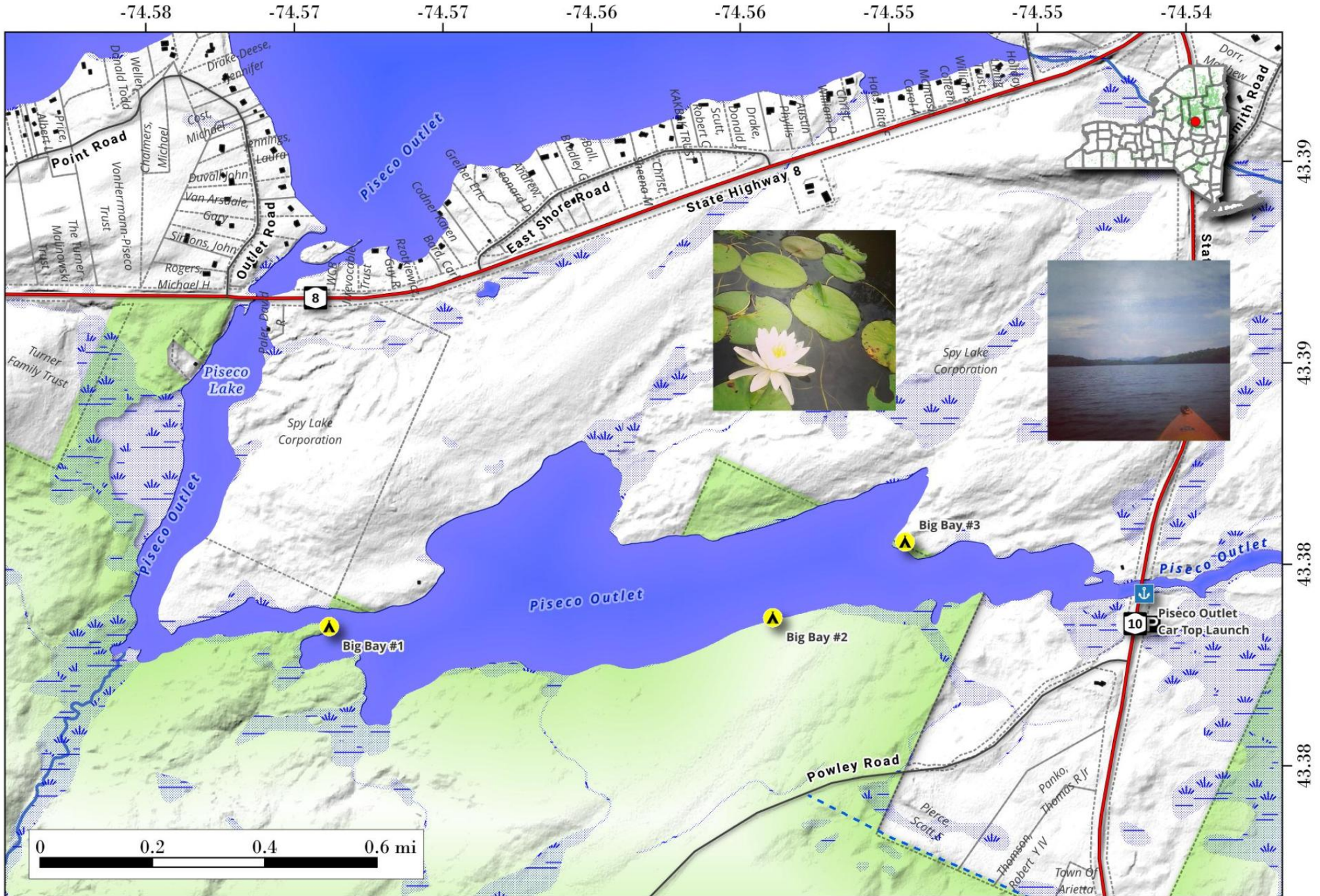


Big Bay of Piseco Lake.

Big Bay of Piseco Lake is a damned up section of the Piseco Outlet, west of NY 10 and north of Powley Road. You can navigate from NY 10 west to the L bend, where it gets too shallow to paddle from there. There are some primitive paddle in campsites along the lake. Much of the northern shore is privately owned by the Spy Lake Corporation.



Map created by Andy Arthur on 7/1/2024 in QGIS 3.34.7-Prizren. Contains DEC Trails/Assets, Additional Campsites/Trails by Andy other data ©OpenStreetMap Data, OSM Maintainers. More maps at andyarthur.org.



Big Bay of Piseco Lake. Access via NY 10 designated parking area, most of the land to the north of lake is wilderness owned by the Spy Lake Association but there are few campsites on the south shore of the lake. It is a nice quiet paddle once you get a short distance from NY 10.



Map created by Andy Arthur on 12/23/2025 in QGIS 3.44.5-Solothurn. Contains NYS GIS and DEC data with additional campsites added by Andy. More maps at andyarthur.org.

