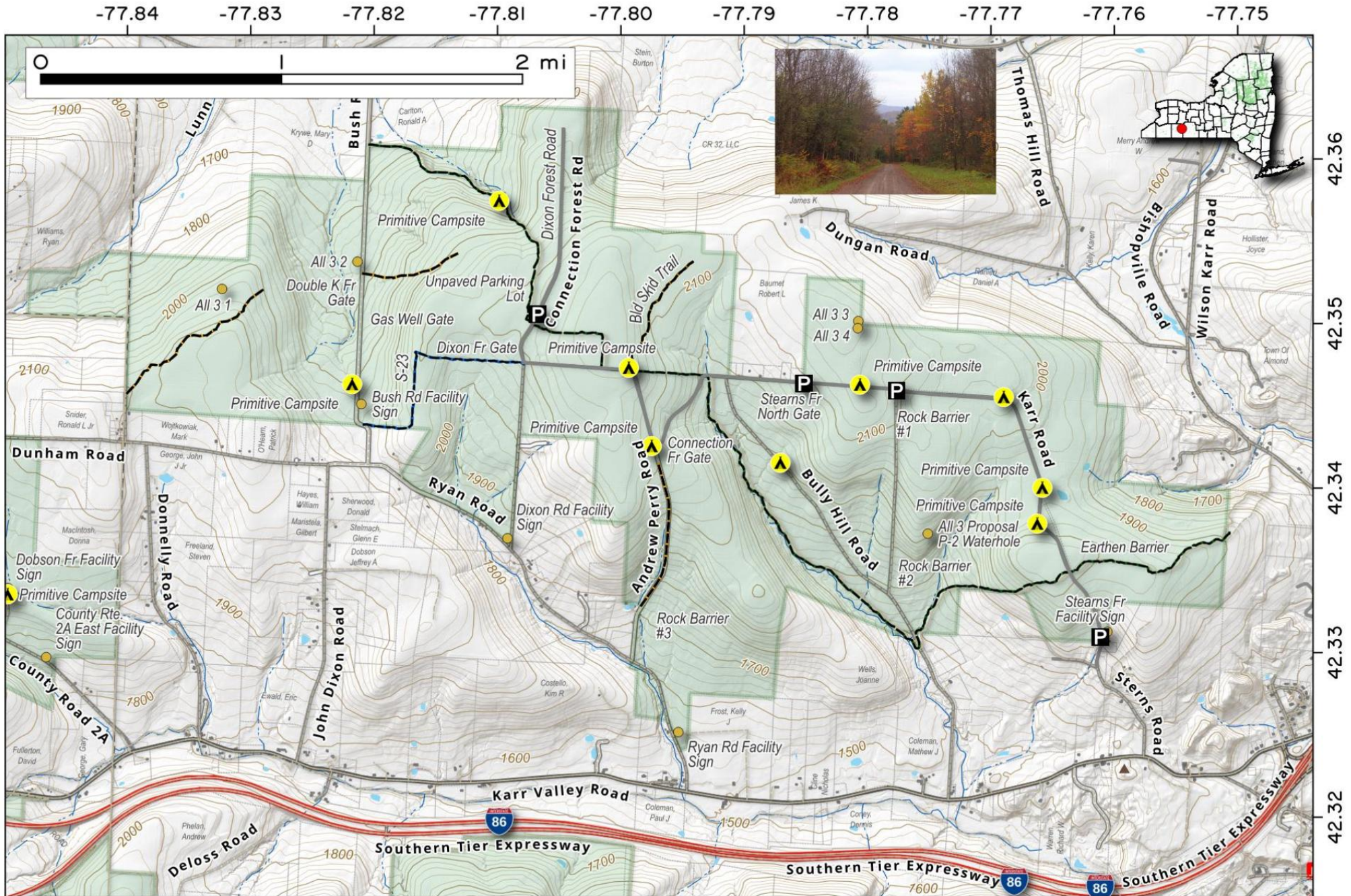


Bully Hill State Forest. 3,522 acres in Allegany County crossed by several truck trails with designed campsites and crossed by the Finger Lakes Trail.

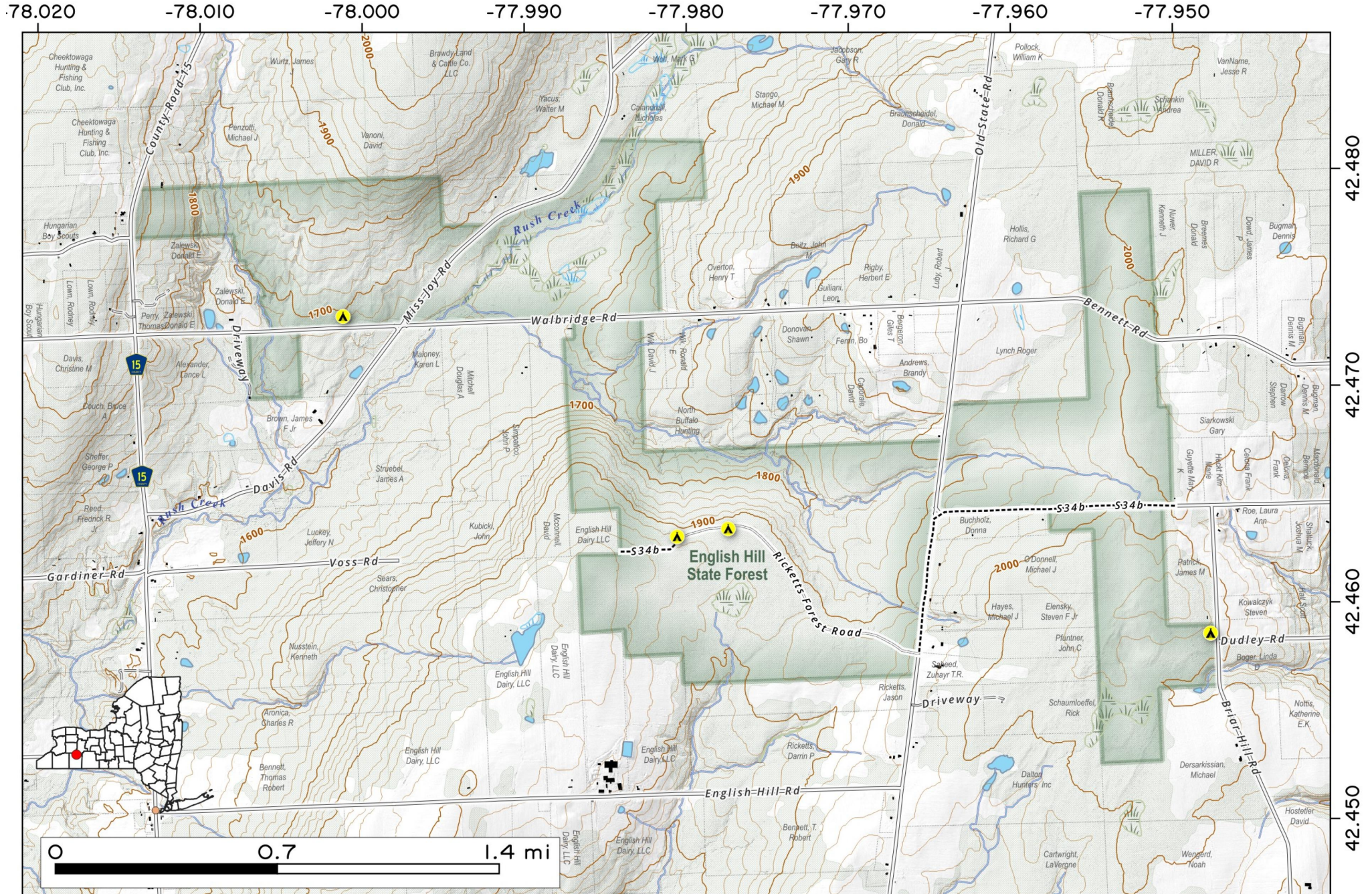
Map created by Andy Arthur on 2/28/2025 in QGIS 3.34.14-Prizren. Contains US Forest Service Base Map, NYS DEC data with additional campsites added by Andy. More maps at andyarthur.org.

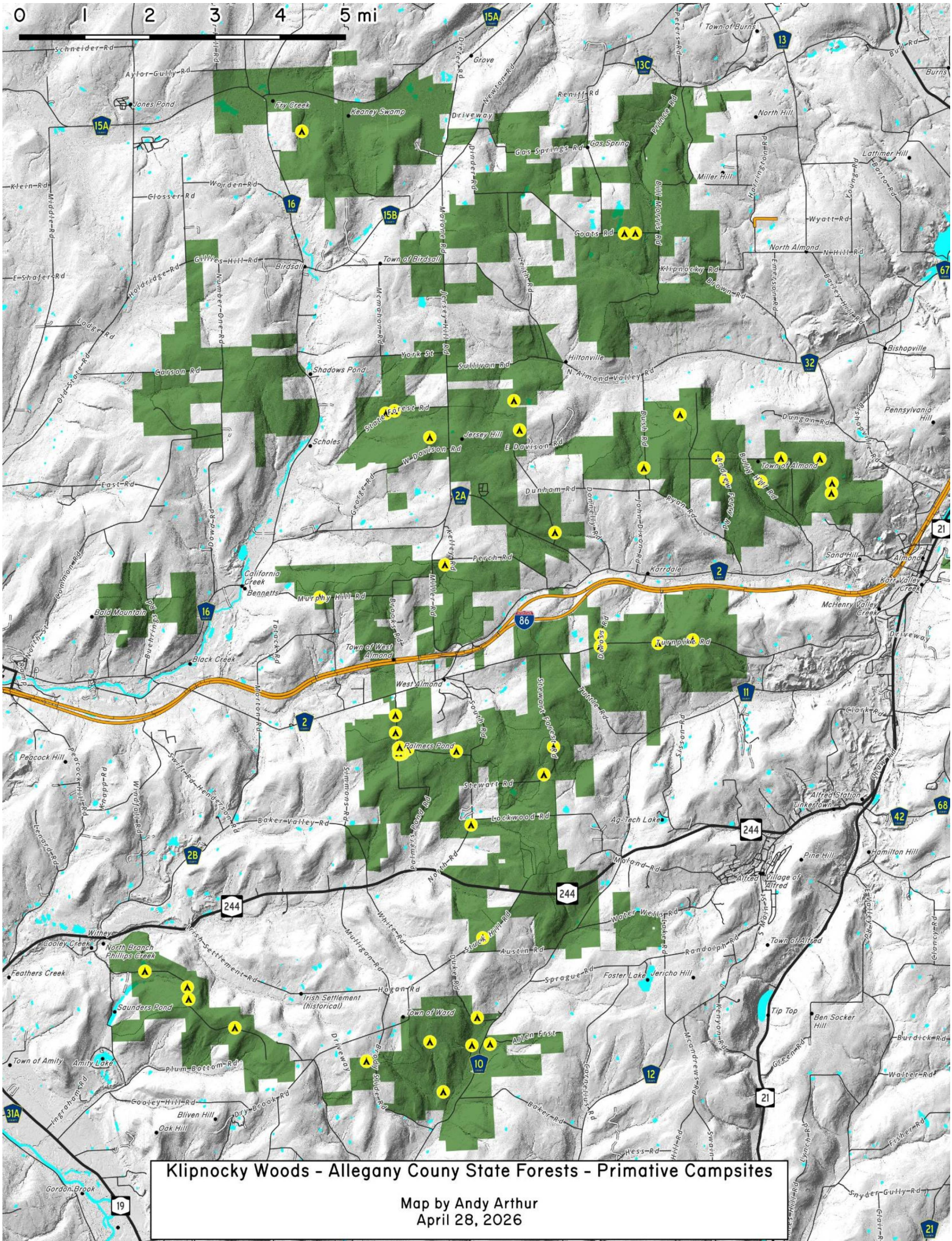


Spanning 1,395 acres in Allegany County, English Hill State Forest features a lush mix of native hardwoods and planted conifers along two major forks of the Rush Creek. Primitive campsites have been designated along several roads in this state forest.



Map created by Andy Arthur on 1/20/2026 in QGIS 3.44.6-Solothurn. Contains NYS GIS and DEC data with additional campsites added by Andy. More maps at andyarthur.org.





Klipnocky Woods - Allegheny County State Forests - Primitive Campsites
 Map by Andy Arthur
 April 28, 2026