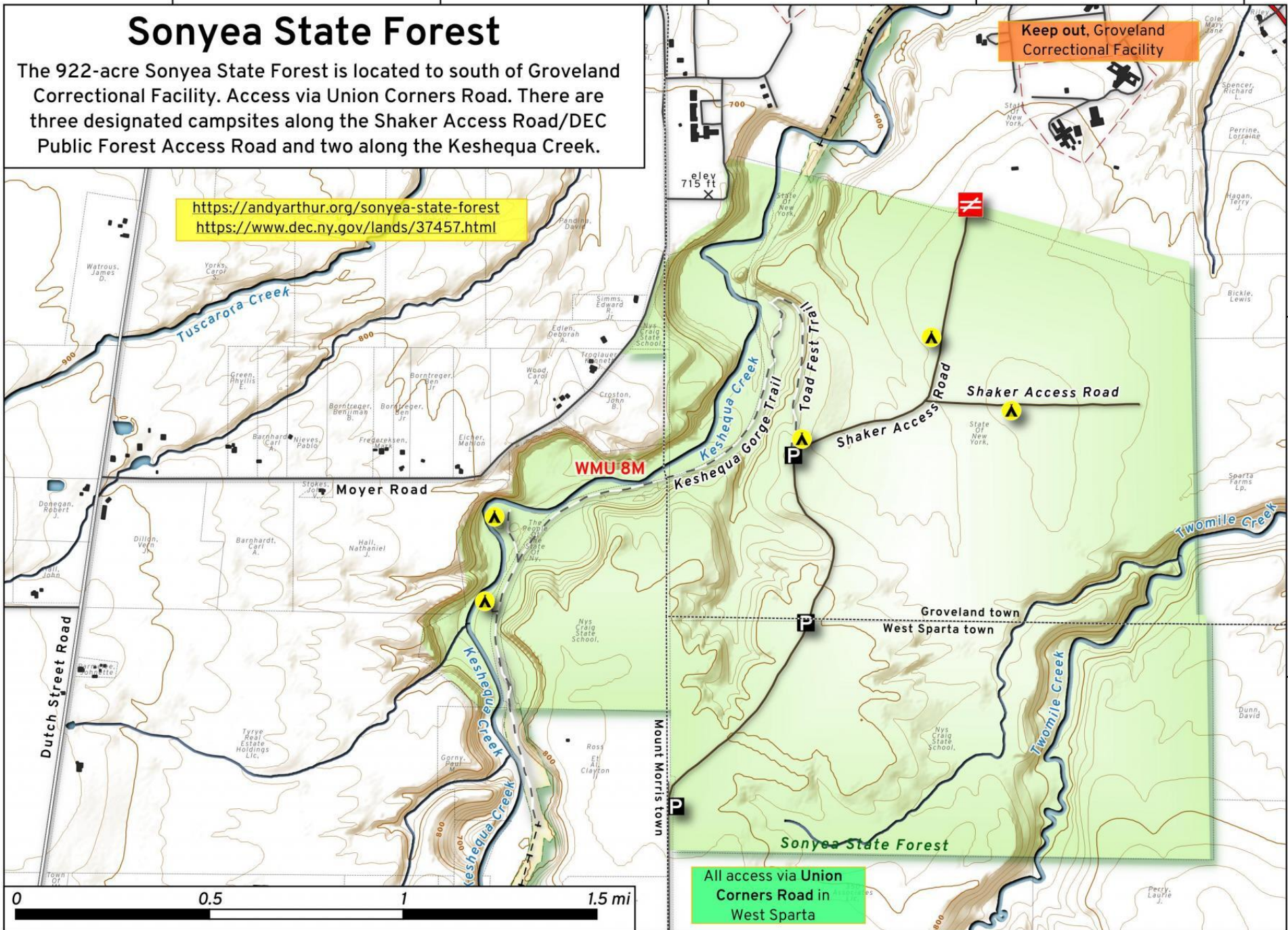


Sonyea State Forest

The 922-acre Sonyea State Forest is located to south of Groveland Correctional Facility. Access via Union Corners Road. There are three designated campsites along the Shaker Access Road/DEC Public Forest Access Road and two along the Keshequa Creek.

<https://andyarthur.org/sonyea-state-forest>
<https://www.dec.ny.gov/lands/37457.html>



All access via Union Corners Road in West Sparta

Sonyea State Forest Map, March 22, 2021 by AndyArthur.org in QGIS 3.18.0-Zürich and Python. Street Map is Copyright © OpenStreetMap contributors, CC BY-SA. NYSDEC Data: LiDAR/DEM, Borders, ADK Wetlands, Trails, Assets. True North. 1 inch = 0.3 miles. Projection: WGS 84 / Pseudo-Mercator. Coordinates: 0.01° latitude-longitude (WGS84). Contours are 20 feet. Map is centered on 19.2448,-146.0866.