

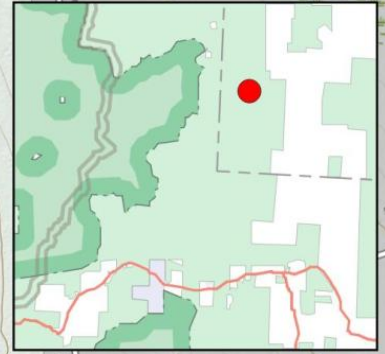
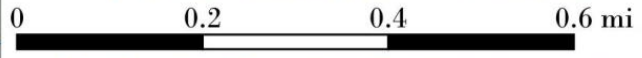
# Somerset Airfield Campground.

Free, developed camping area with pit privies off of the Deerfield River. No camping for the next 3/4 mile north of Stratton Airfield, however beyond there near Shep Meadow additional dispersed camping opportunities exist (seasonal use only - gated in winter).

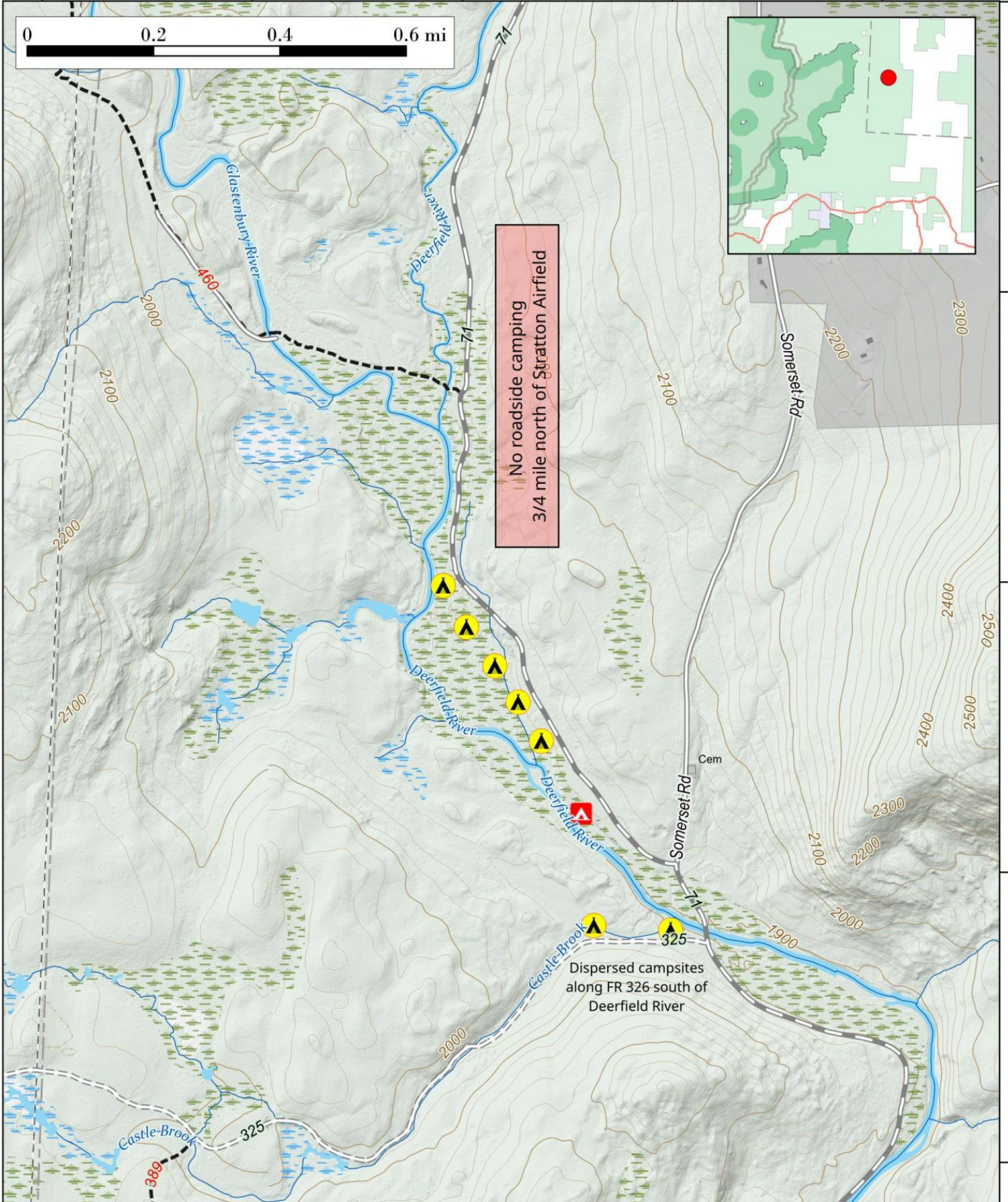
Map created by Andy Arthur on 10/29/2024 in QGIS 3.34.11-Prizren. Contains US Forest Service Base Map with additional campsites added by Andy. More maps at [andyarthur.org](http://andyarthur.org).



-73.01      -73.00      -72.99      -72.98      42.97



No roadside camping  
3/4 mile north of Stratton Airfield



Dispersed campsites  
along FR 326 south of  
Deerfield River

42.97  
42.96  
42.96  
42.95  
42.95