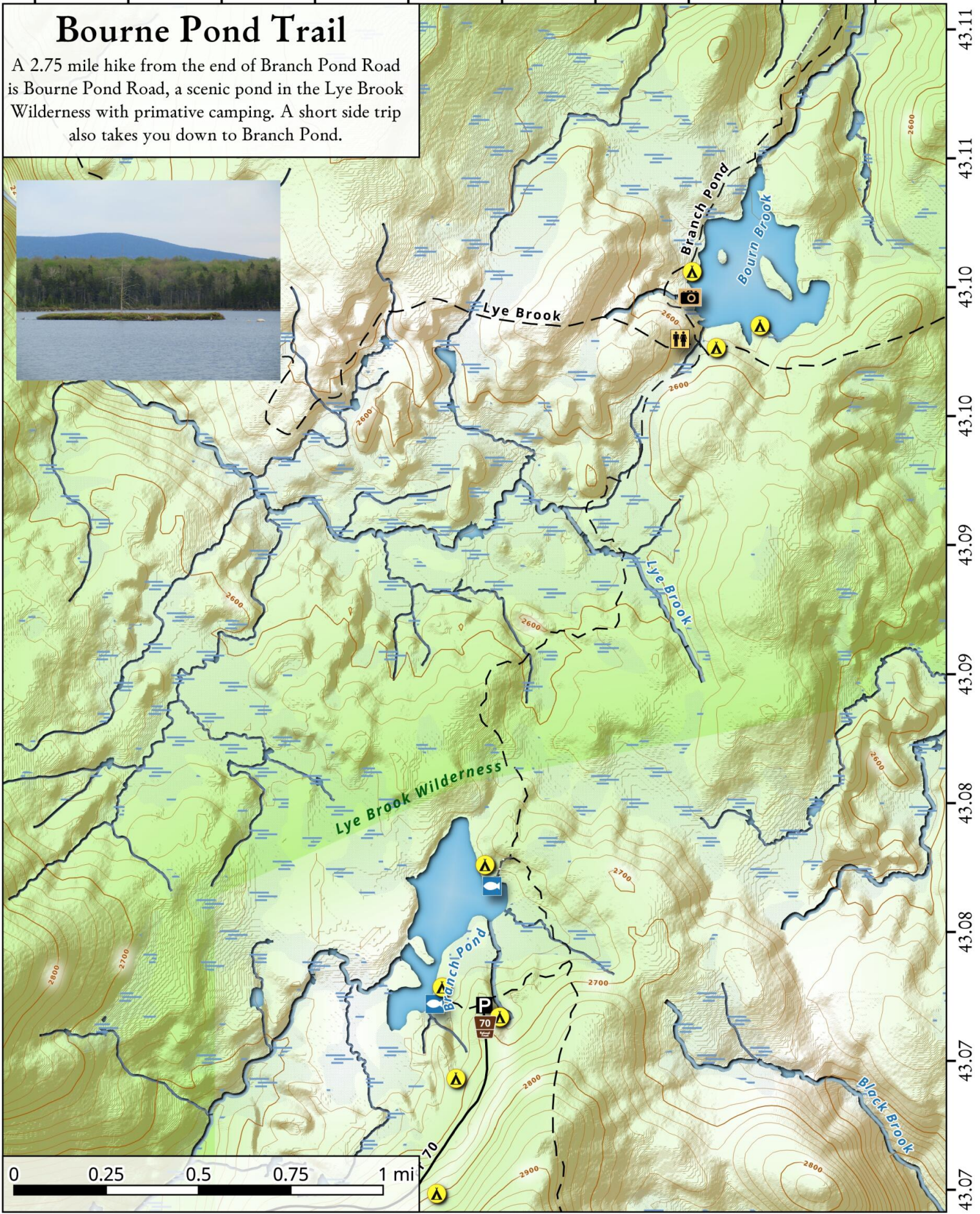


-73.04 -73.04 -73.03 -73.03 -73.02 -73.02 -73.01 -73.01 -73.00 -73.00

# Bourne Pond Trail

A 2.75 mile hike from the end of Branch Pond Road is Bourne Pond Road, a scenic pond in the Lye Brook Wilderness with primitive camping. A short side trip also takes you down to Branch Pond.



43.11  
43.11  
43.10  
43.10  
43.09  
43.09  
43.08  
43.08  
43.07  
43.07