

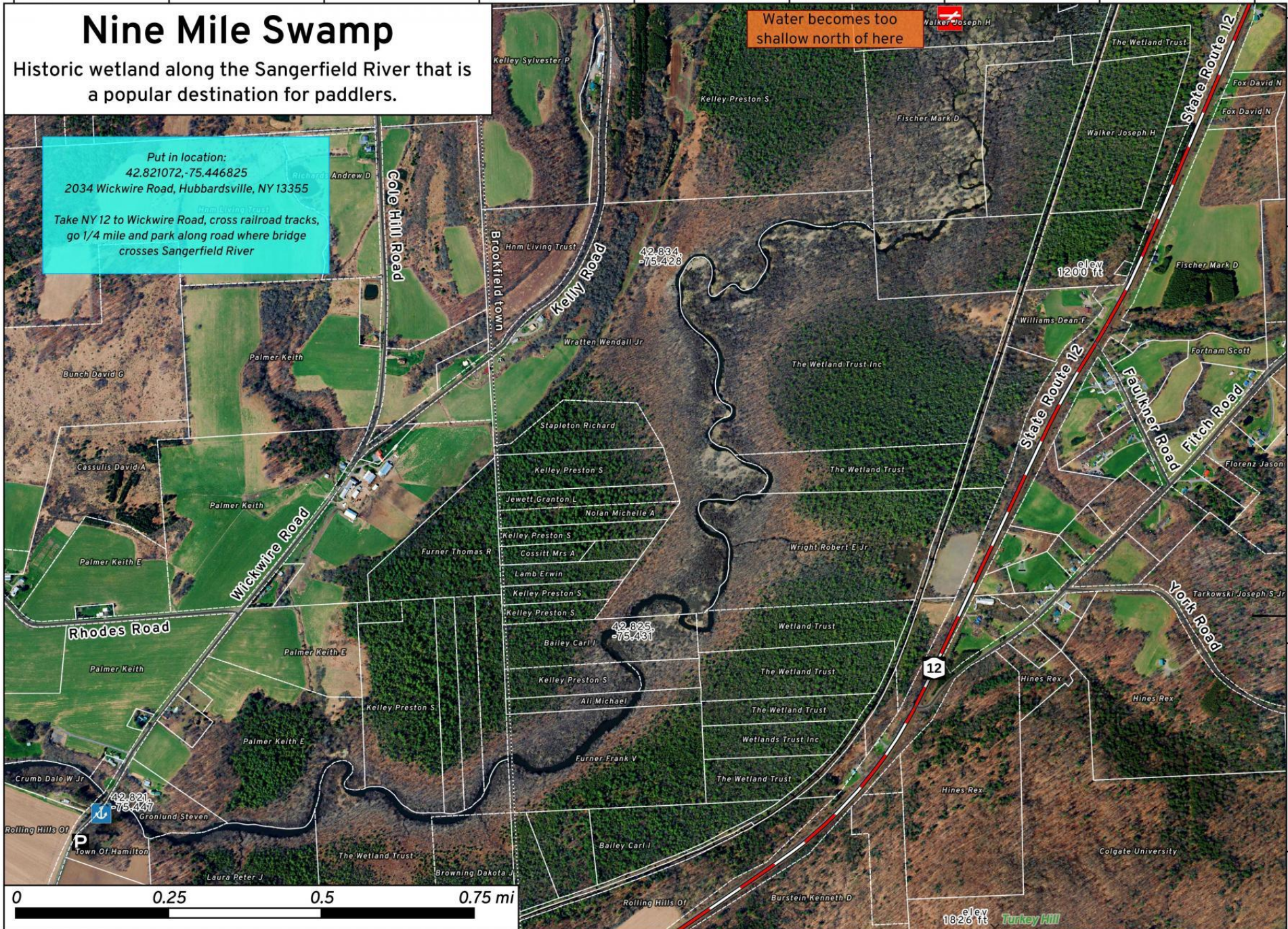
-75.450 -75.445 -75.440 -75.435 -75.430 -75.425 -75.420 -75.415 -75.410

Nine Mile Swamp

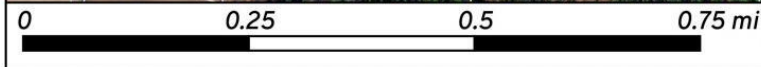
Historic wetland along the Sangerfield River that is a popular destination for paddlers.

Put in location:
42.821072,-75.446825
2034 Wickwire Road, Hubbardsville, NY 13355
Take NY 12 to Wickwire Road, cross railroad tracks, go 1/4 mile and park along road where bridge crosses Sangerfield River

Water becomes too shallow north of here



42.840
42.835
42.830
42.825
42.820



Ralph Road State Forest Map, May 6, 2021 by AndyArthur.org in QGIS 3.18.2-Zürich and Python. Street Map is Copyright © OpenStreetMap contributors, CC BY-SA. NYSDEC Data: LiDAR/DEM, Borders, ADK Wetlands, Trails, Assets. True North. 1 inch = 0.2 miles. Projection: NAD83 / UTM zone 18N. Coordinates: 0.005° latitude-longitude (WGS84). Contours are 0 feet. Map is centered on 42.8321,-75.4249.