

Vromans Nose.

Notable landmark outside of Middleburgh known for it's scenic views of Schoharie Valley.

Map created by Andy Arthur on 10/22/2024 in QGIS 3.34.11-Prizren. Contains US Forest Service Base Map. More maps at andyarthur.org.



-74.36

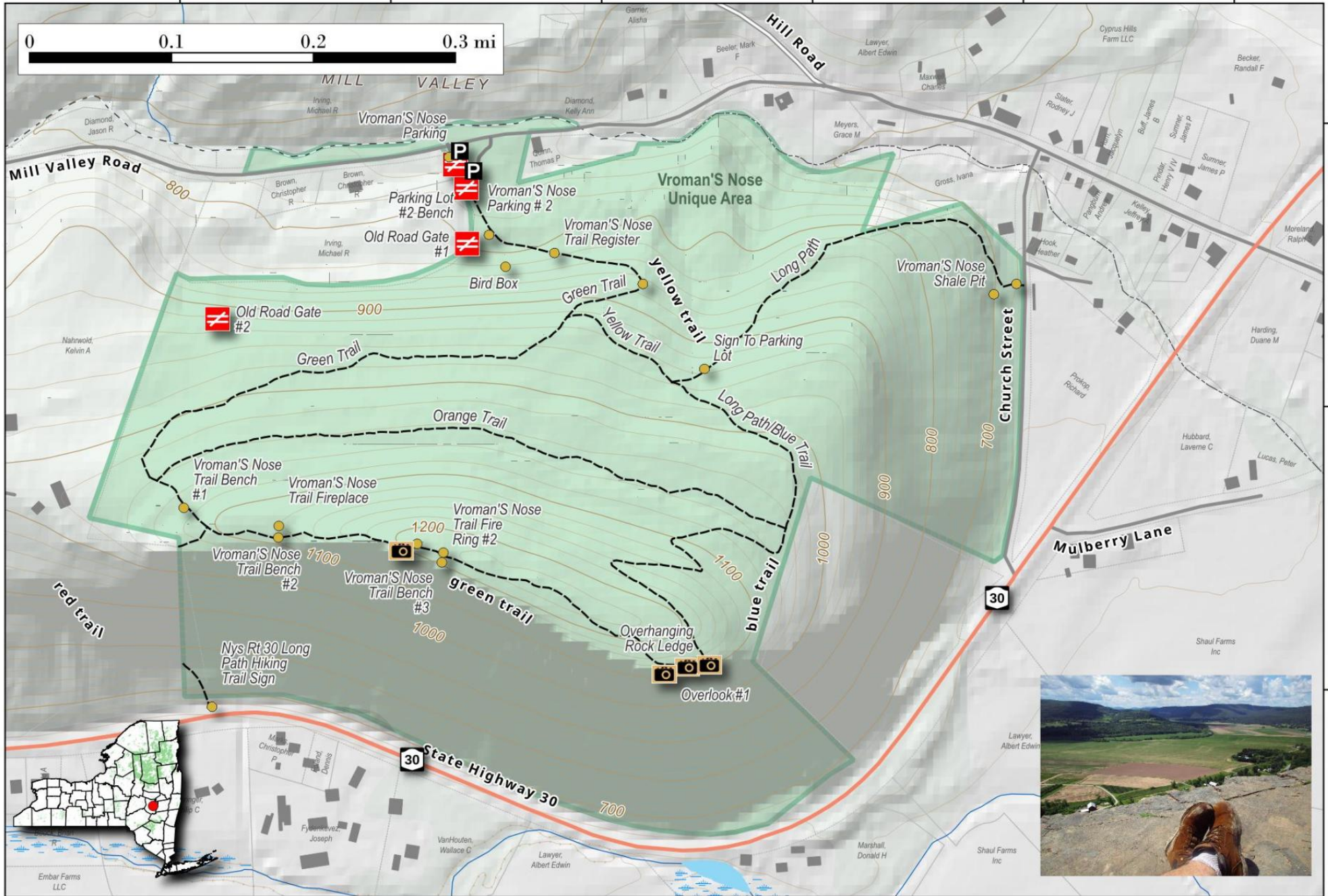
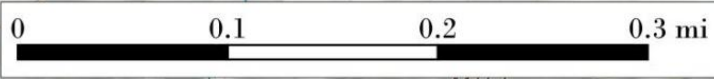
-74.36

-74.36

-74.35

-74.35

-74.35



42.60

42.59

42.59

