

Beales Pond State Forest.

Outside of Masonville, this state land is long and narrow and crossed by the Finger Lakes Trail. There is a lean-to along the FLT and designated campsites at Beales Pond.

Map created by Andy Arthur on 1/8/2025 in QGIS 3.34.14-Prizren. Contains US Forest Service Base Map, NYS DEC Ddata with additional campsites added by Andy. More maps at andyarthur.org.



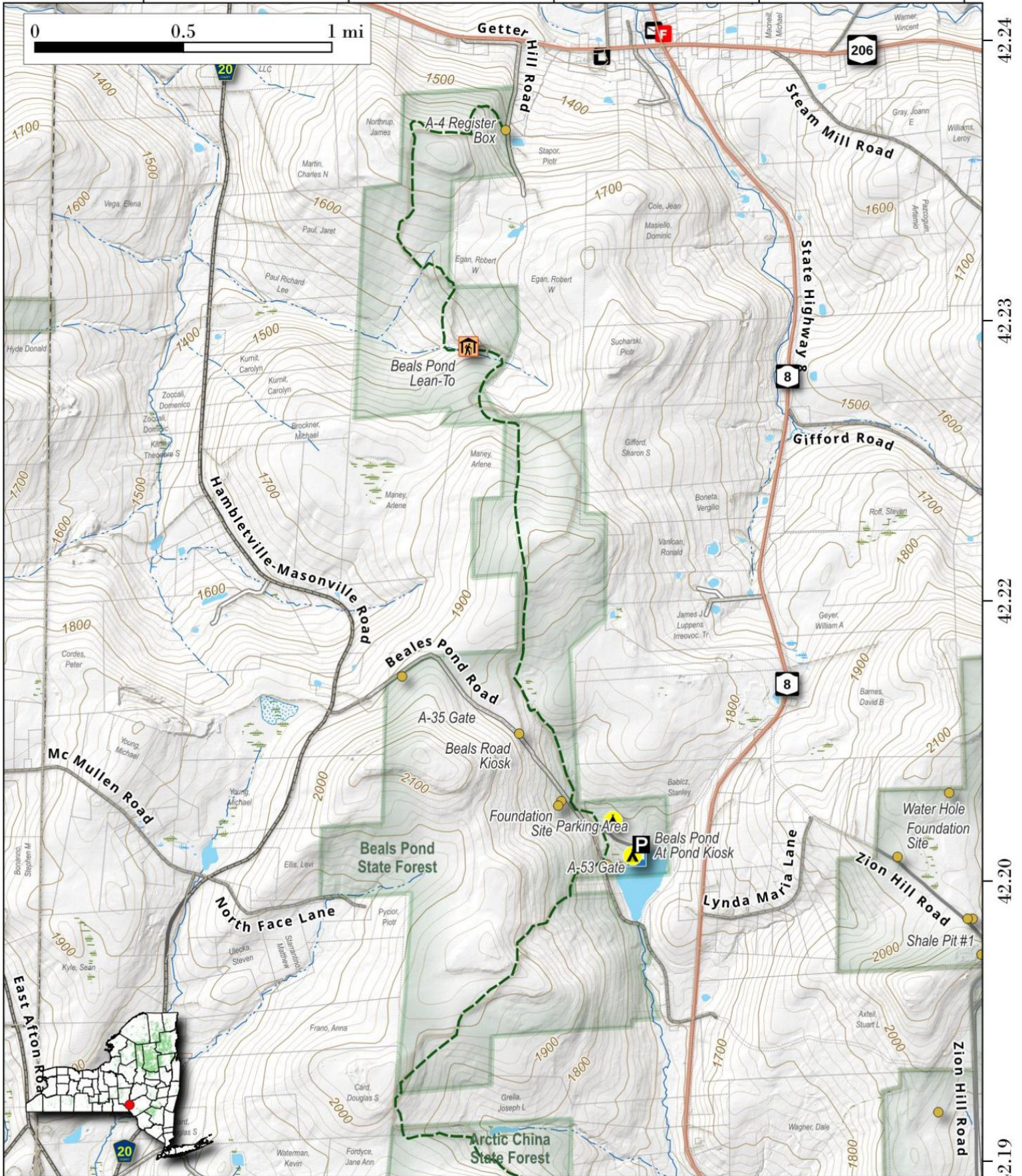
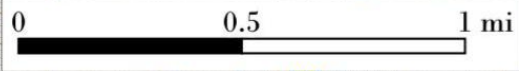
-75.41

-75.40

-75.38

-75.37

-75.36



42.24

42.23

42.22

42.20

42.19