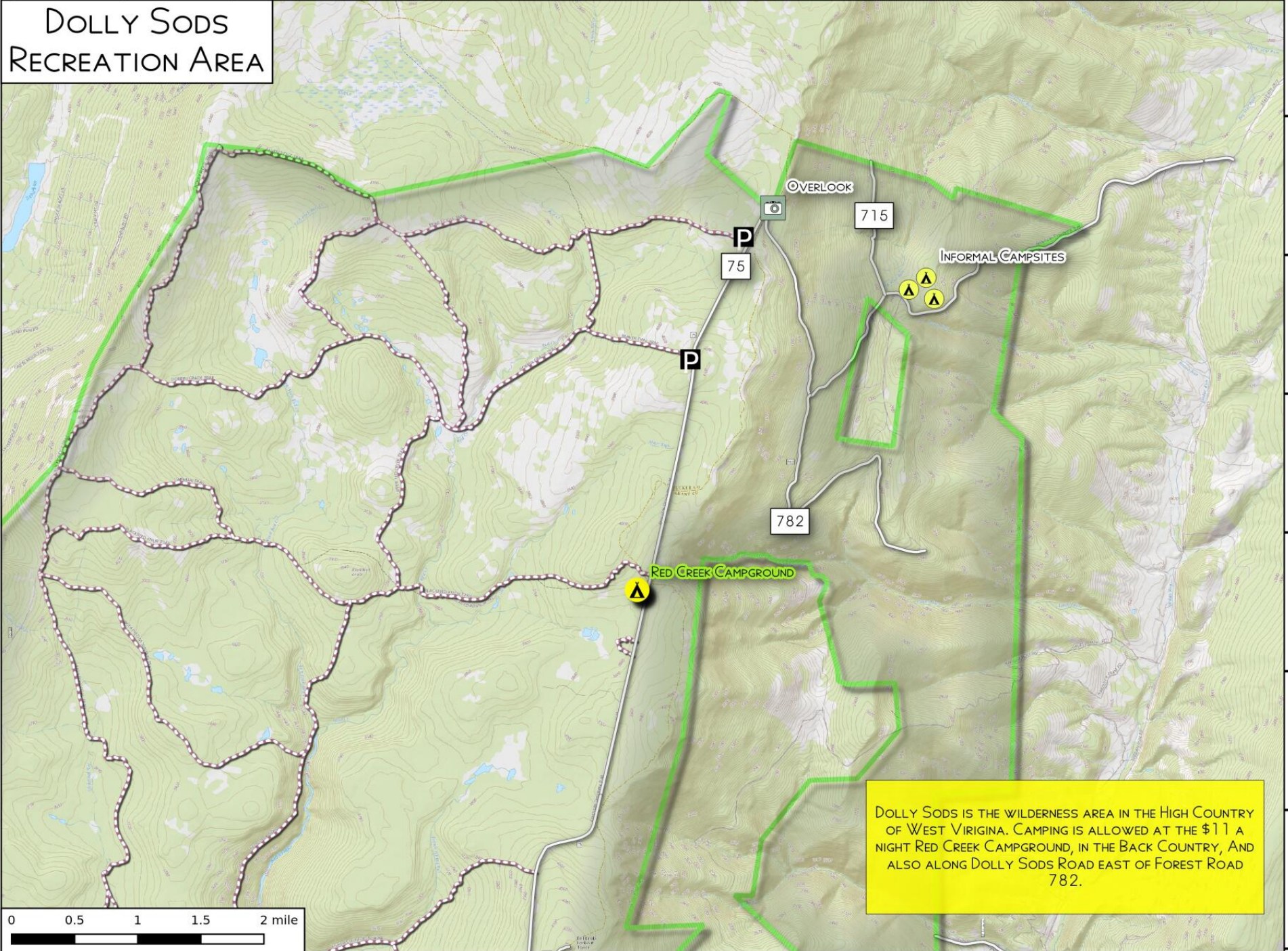
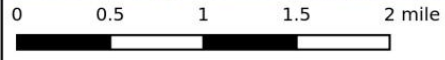


79.39°W 79.37°W 79.36°W 79.35°W 79.34°W 79.32°W 79.31°W 79.30°W 79.29°W 79.27°W 79.26°W 79.25°W

DOLLY SODS RECREATION AREA



39.07°N
39.06°N
39.05°N
39.04°N
39.02°N
39.01°N
39.00°N



DOLLY SODS IS THE WILDERNESS AREA IN THE HIGH COUNTRY OF WEST VIRGINIA. CAMPING IS ALLOWED AT THE \$11 A NIGHT RED CREEK CAMPGROUND, IN THE BACK COUNTRY, AND ALSO ALONG DOLLY SODS ROAD EAST OF FOREST ROAD 782.