

-73.685

-73.680

-73.675

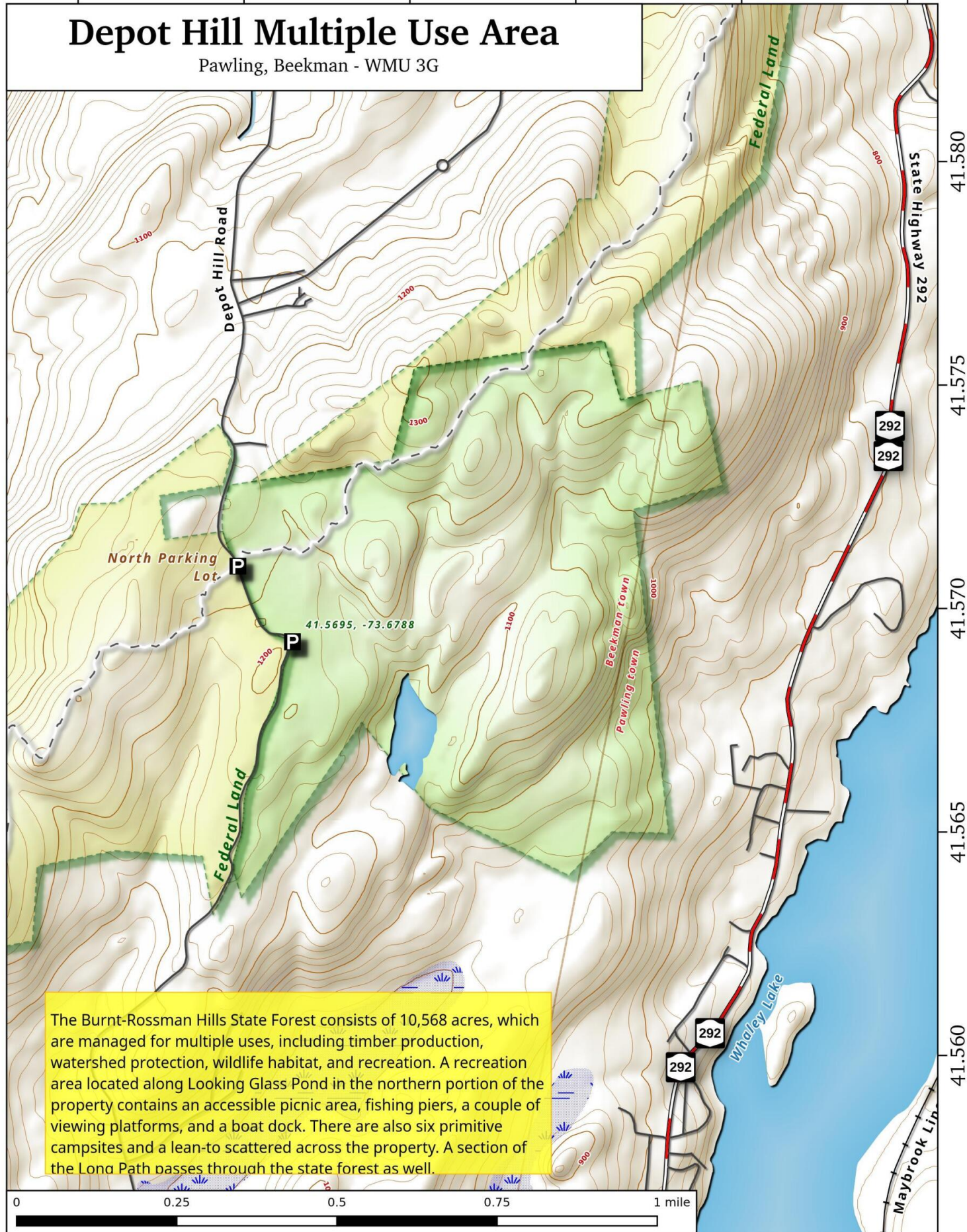
-73.670

-73.665

-73.660

Depot Hill Multiple Use Area

Pawling, Beekman - WMU 3G



The Burnt-Rossman Hills State Forest consists of 10,568 acres, which are managed for multiple uses, including timber production, watershed protection, wildlife habitat, and recreation. A recreation area located along Looking Glass Pond in the northern portion of the property contains an accessible picnic area, fishing piers, a couple of viewing platforms, and a boat dock. There are also six primitive campsites and a lean-to scattered across the property. A section of the Long Path passes through the state forest as well.