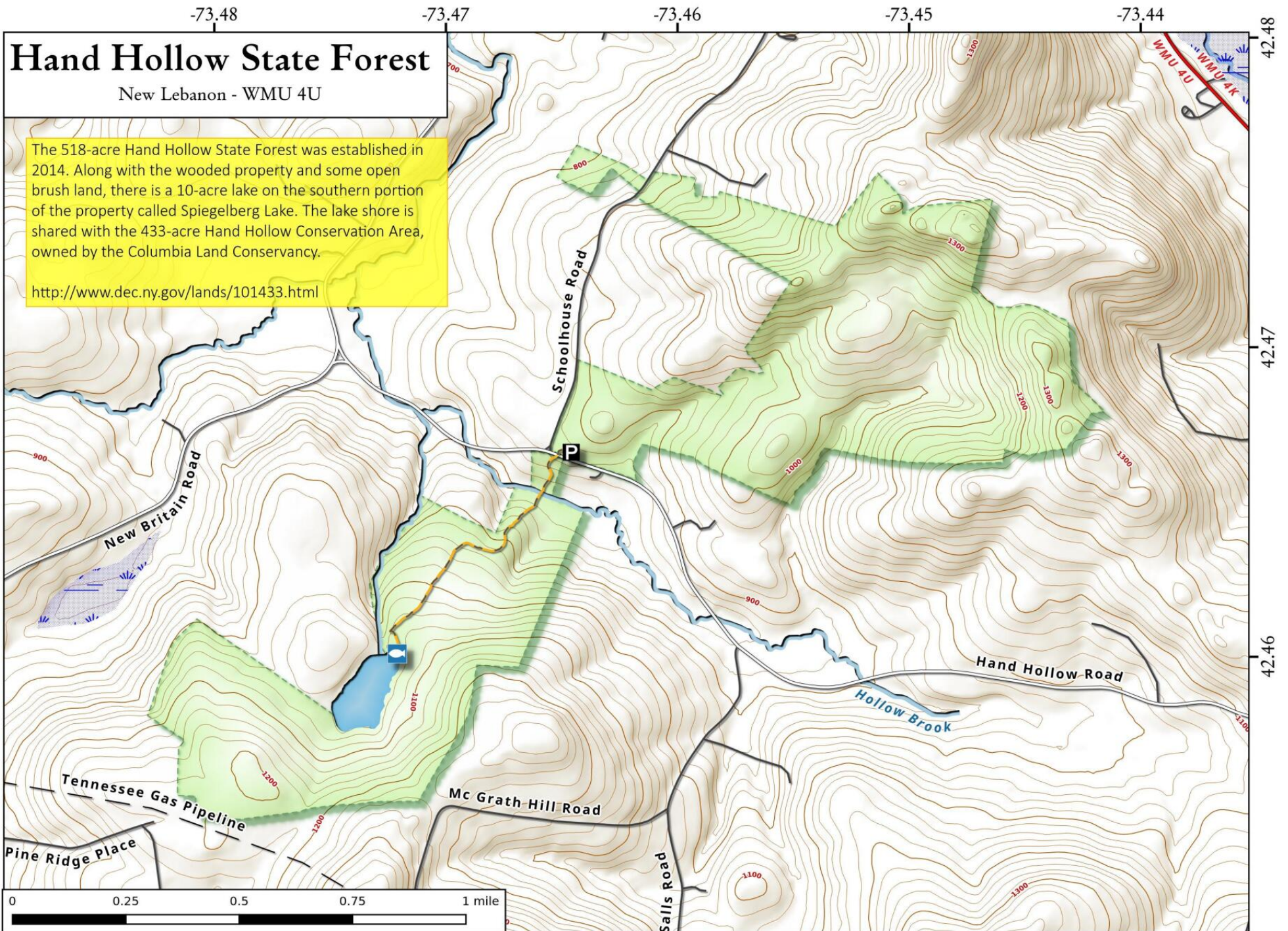


Hand Hollow State Forest

New Lebanon - WMU 4U

The 518-acre Hand Hollow State Forest was established in 2014. Along with the wooded property and some open brush land, there is a 10-acre lake on the southern portion of the property called Spiegelberg Lake. The lake shore is shared with the 433-acre Hand Hollow Conservation Area, owned by the Columbia Land Conservancy.

<http://www.dec.ny.gov/lands/101433.html>



Hand Hollow State Forest Map, August 29, 2017 by AndyArthur.org in QGIS 2.18.11 and Python. Street Map is Copyright © OpenStreetMap contributors, CC BY-SA. NYSDEC Data: DEM, Borders, ADK Wetlands, Trails, Assets. True North. 1 inch = 0.3 miles. Projection: NAD83 / UTM zone 18N. Coordinates: 0.01° latitude-longitude (WGS84). Contours are 20 feet.