

# Webster Hill State Forest.

962 acres on the hillside to the west of Pixley Falls.

Map created by Andy Arthur on 1/24/2025 in QGIS 3.34.14-Prizren. Contains US Forest Service Base Map, NYS DEC Ddata with additional campsites added by Andy. More maps at [andyarthur.org](http://andyarthur.org).



-75.42

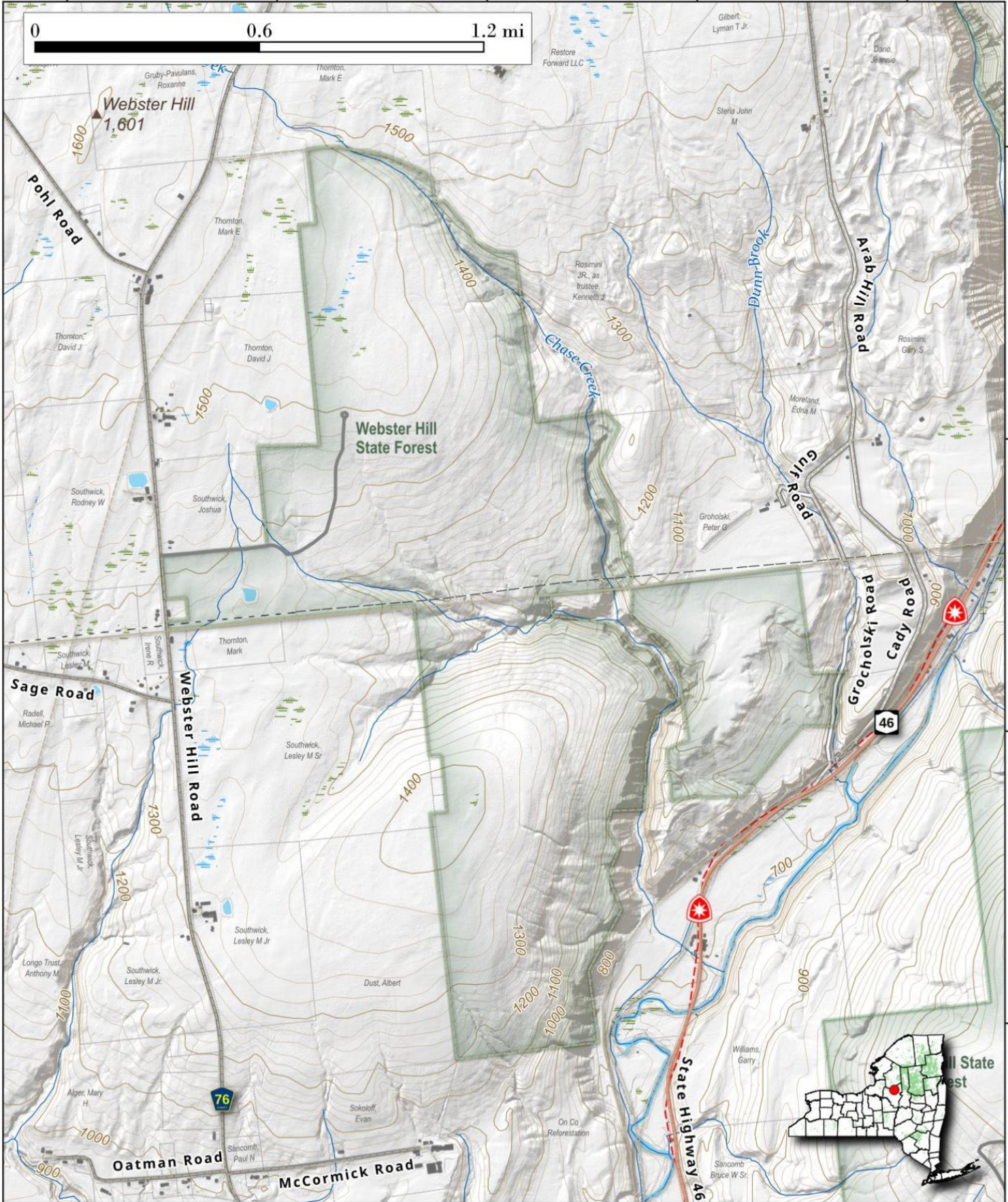
-75.41

-75.40

-75.39

-75.38

0 0.6 1.2 mi



43.41

43.40

43.39

43.38