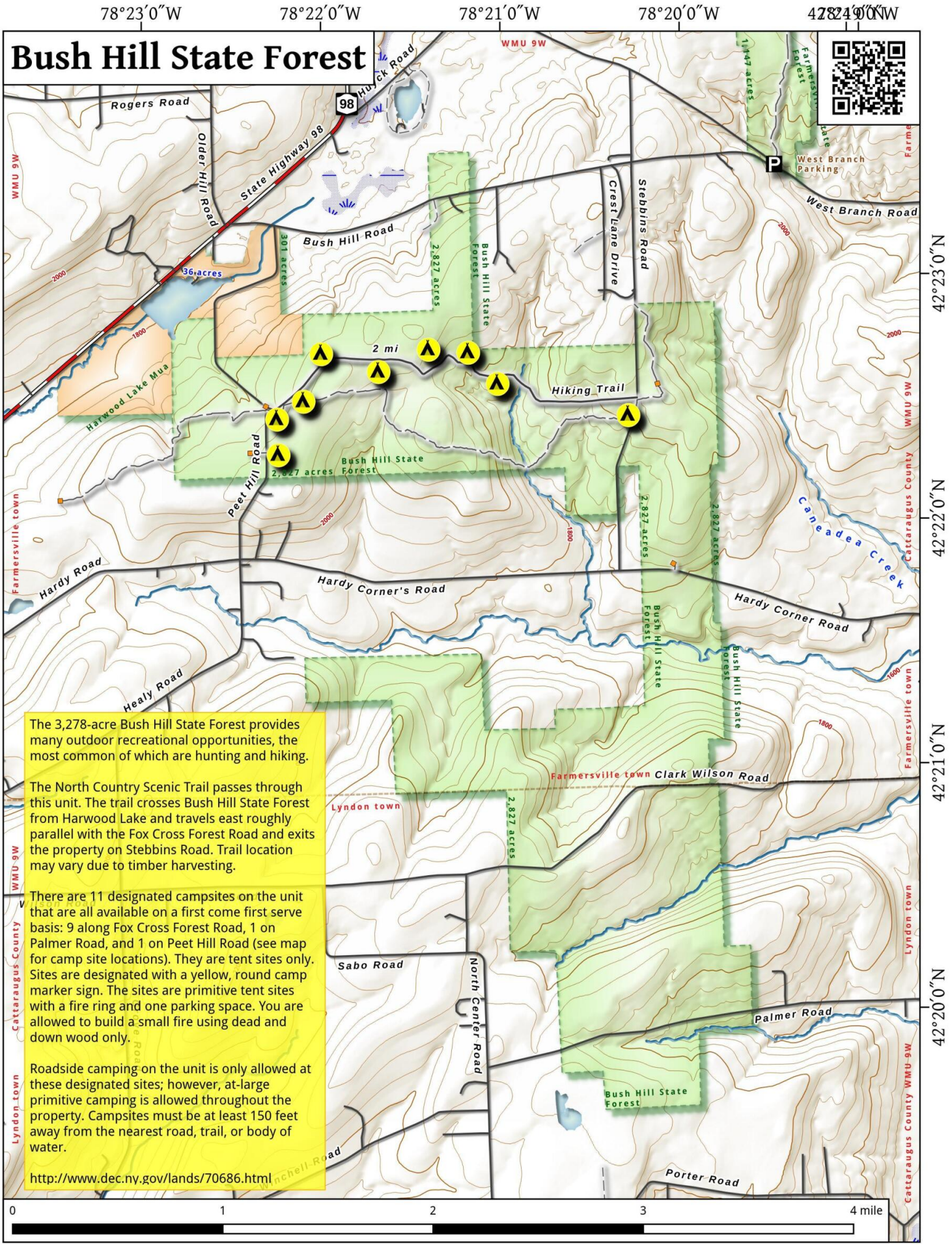


# Bush Hill State Forest



The 3,278-acre Bush Hill State Forest provides many outdoor recreational opportunities, the most common of which are hunting and hiking.

The North Country Scenic Trail passes through this unit. The trail crosses Bush Hill State Forest from Harwood Lake and travels east roughly parallel with the Fox Cross Forest Road and exits the property on Stebbins Road. Trail location may vary due to timber harvesting.

There are 11 designated campsites on the unit that are all available on a first come first serve basis: 9 along Fox Cross Forest Road, 1 on Palmer Road, and 1 on Peet Hill Road (see map for camp site locations). They are tent sites only. Sites are designated with a yellow, round camp marker sign. The sites are primitive tent sites with a fire ring and one parking space. You are allowed to build a small fire using dead and down wood only.

Roadside camping on the unit is only allowed at these designated sites; however, at-large primitive camping is allowed throughout the property. Campsites must be at least 150 feet away from the nearest road, trail, or body of water.

<http://www.dec.ny.gov/lands/70686.html>

Bush Hill State Forest Map, October 9, 2016 by AndyArthur.org in QGIS 2.16.1-Nødebo and Python. Street Map is Copyright © OpenStreetMap contributors, CC BY-SA. NYSDEC Data: DEM, Borders, ADK Wetlands, Trails, Assets. True North. 1 inch = 0.6 miles. Projection: NAD83 / UTM zone 17N. Coordinates: 60" WGS 84. Contours are 40 feet.