

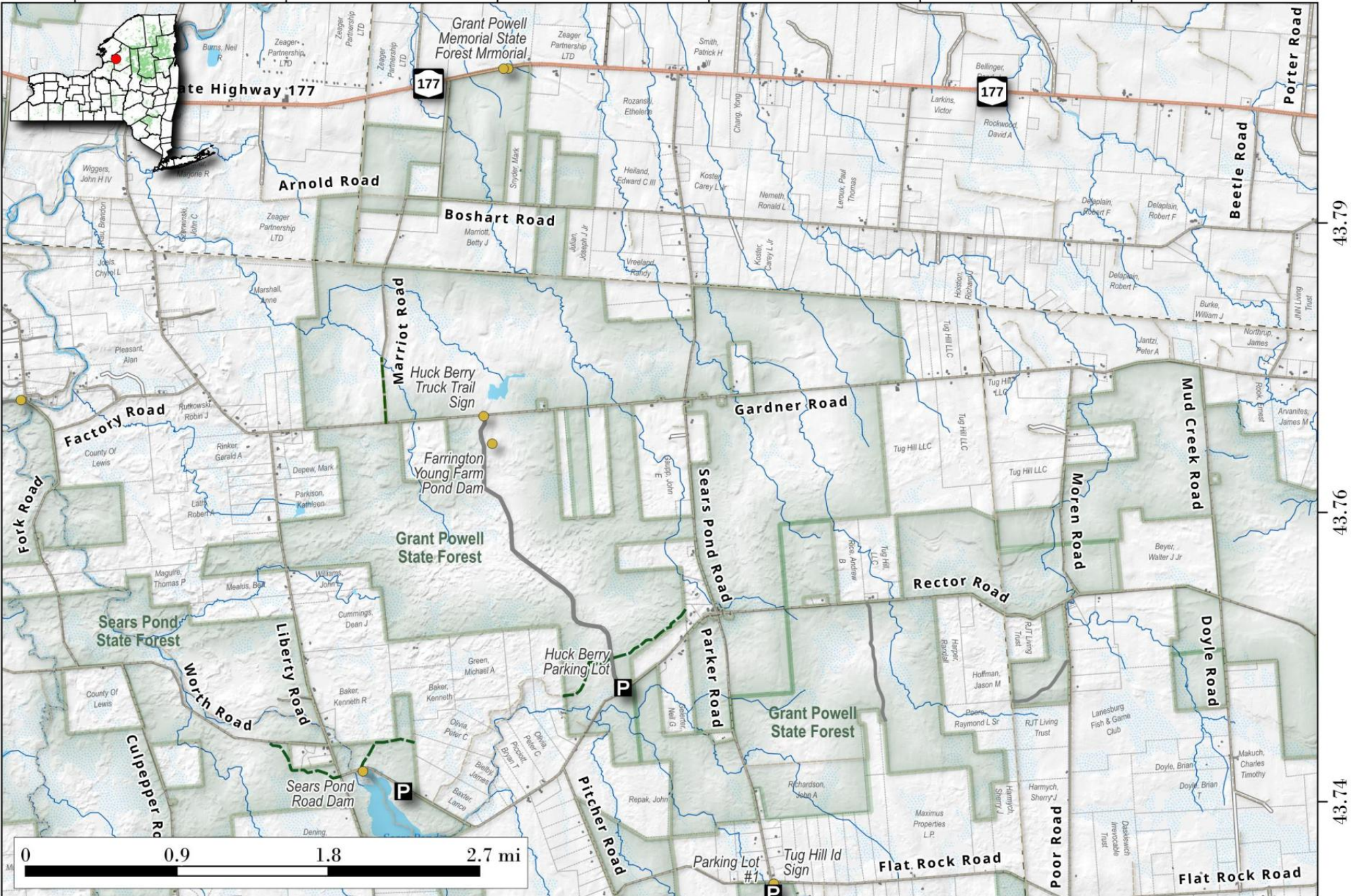
Grant Powell State Forest.

The 8,077-acre state forest honors the first district forester, who led local land acquisition projects. It adjoins the Tug Hill Wildlife Management Area and attracts snowmobilers and skiers to its deep winter snow conditions.



Map created by Andy Arthur on 1/24/2025 in QGIS 3.34.14-Prizren. Contains US Forest Service Base Map, NYS DEC Ddata with additional campsites added by Andy. More maps at andyarthur.org.

-75.75 -75.73 -75.70 -75.68 -75.65 -75.63



43.79

43.76

43.74

