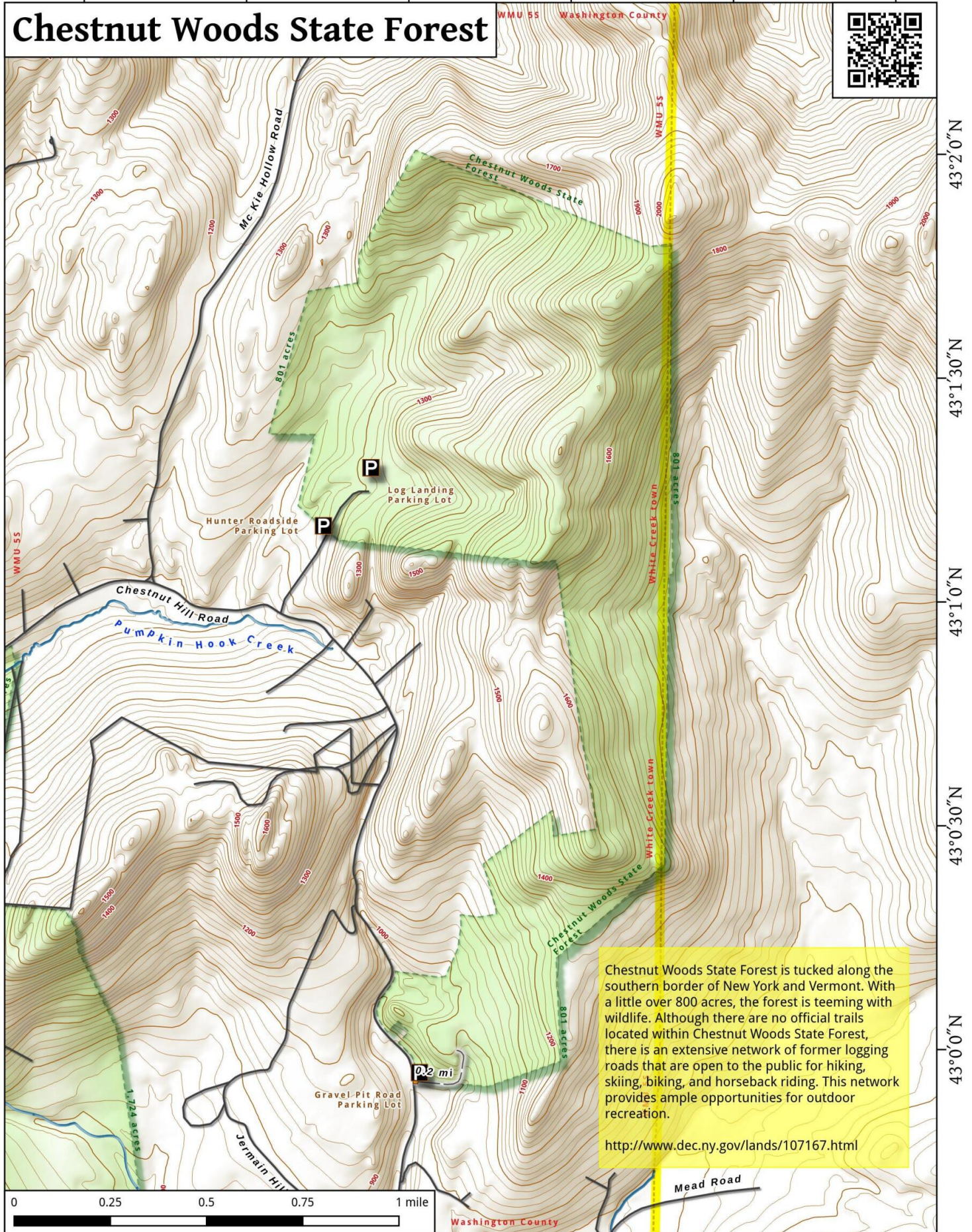


73°18'0"W 73°17'30"W 73°17'0"W 73°16'30"W 73°16'0"W 73°15'30"W

# Chestnut Woods State Forest



Chestnut Woods State Forest is tucked along the southern border of New York and Vermont. With a little over 800 acres, the forest is teeming with wildlife. Although there are no official trails located within Chestnut Woods State Forest, there is an extensive network of former logging roads that are open to the public for hiking, skiing, biking, and horseback riding. This network provides ample opportunities for outdoor recreation.

<http://www.dec.ny.gov/lands/107167.html>