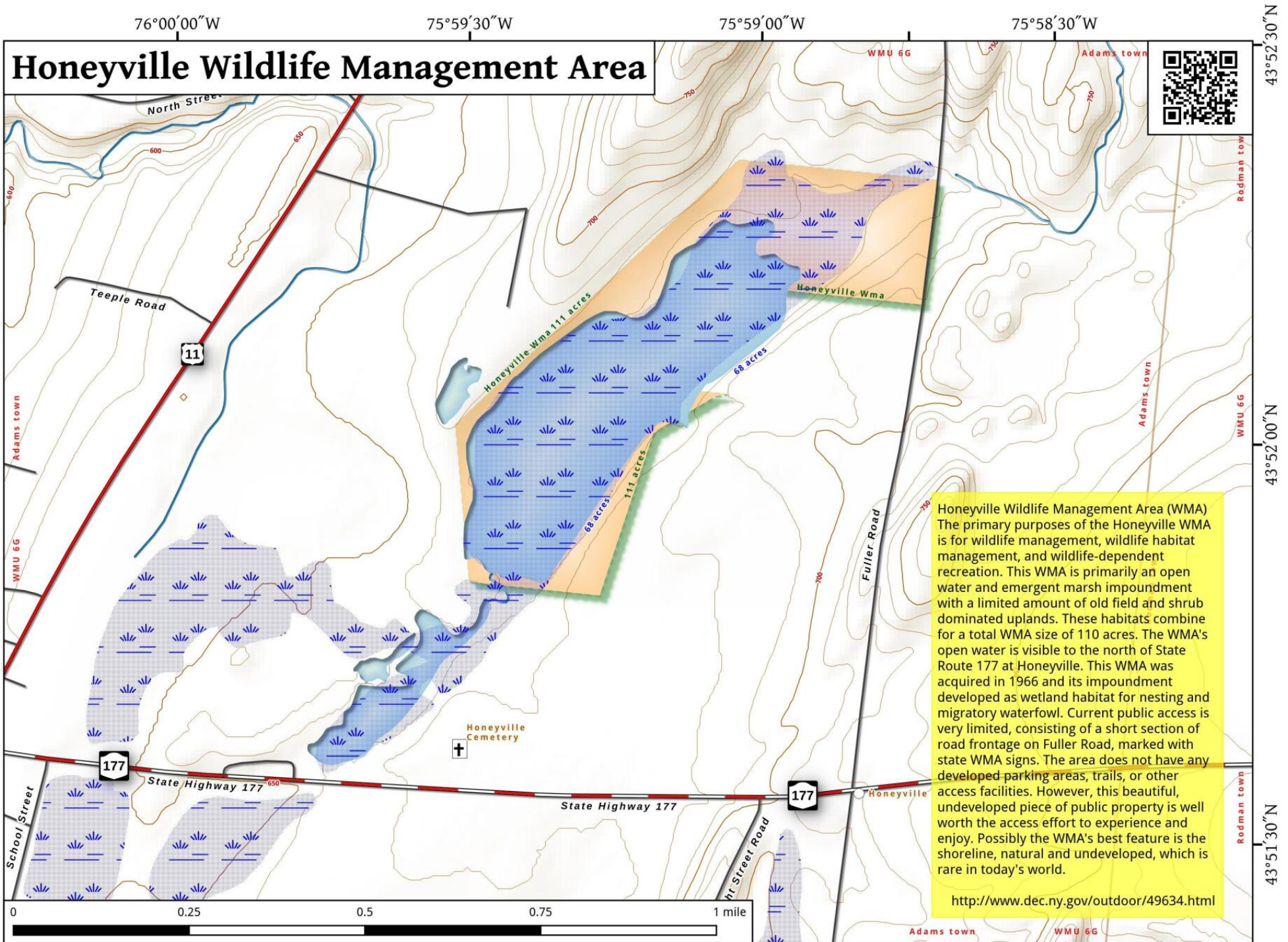


Honeyville Wildlife Management Area



Honeyville Wildlife Management Area (WMA)
 The primary purposes of the Honeyville WMA is for wildlife management, wildlife habitat management, and wildlife-dependent recreation. This WMA is primarily an open water and emergent marsh impoundment with a limited amount of old field and shrub dominated uplands. These habitats combine for a total WMA size of 110 acres. The WMA's open water is visible to the north of State Route 177 at Honeyville. This WMA was acquired in 1966 and its impoundment developed as wetland habitat for nesting and migratory waterfowl. Current public access is very limited, consisting of a short section of road frontage on Fuller Road, marked with state WMA signs. The area does not have any developed parking areas, trails, or other access facilities. However, this beautiful, undeveloped piece of public property is well worth the access effort to experience and enjoy. Possibly the WMA's best feature is the shoreline, natural and undeveloped, which is rare in today's world.

<http://www.dec.ny.gov/outdoor/49634.html>

Honeyville Wildlife Management Area Map, May 25, 2016 by AndyArthur.org in QGIS 2.14.2-Essen and Python. Street Map is Copyright © OpenStreetMap contributors, CC BY-SA. NYSDEC Data: DEM, Borders, ADK Wetlands, Trails, Assets. True North. 1 inch = 0.2 miles. Projection: NAD83 / UTM zone 18N. Coordinates: 30" WGS 84. Contours are 10 feet.