

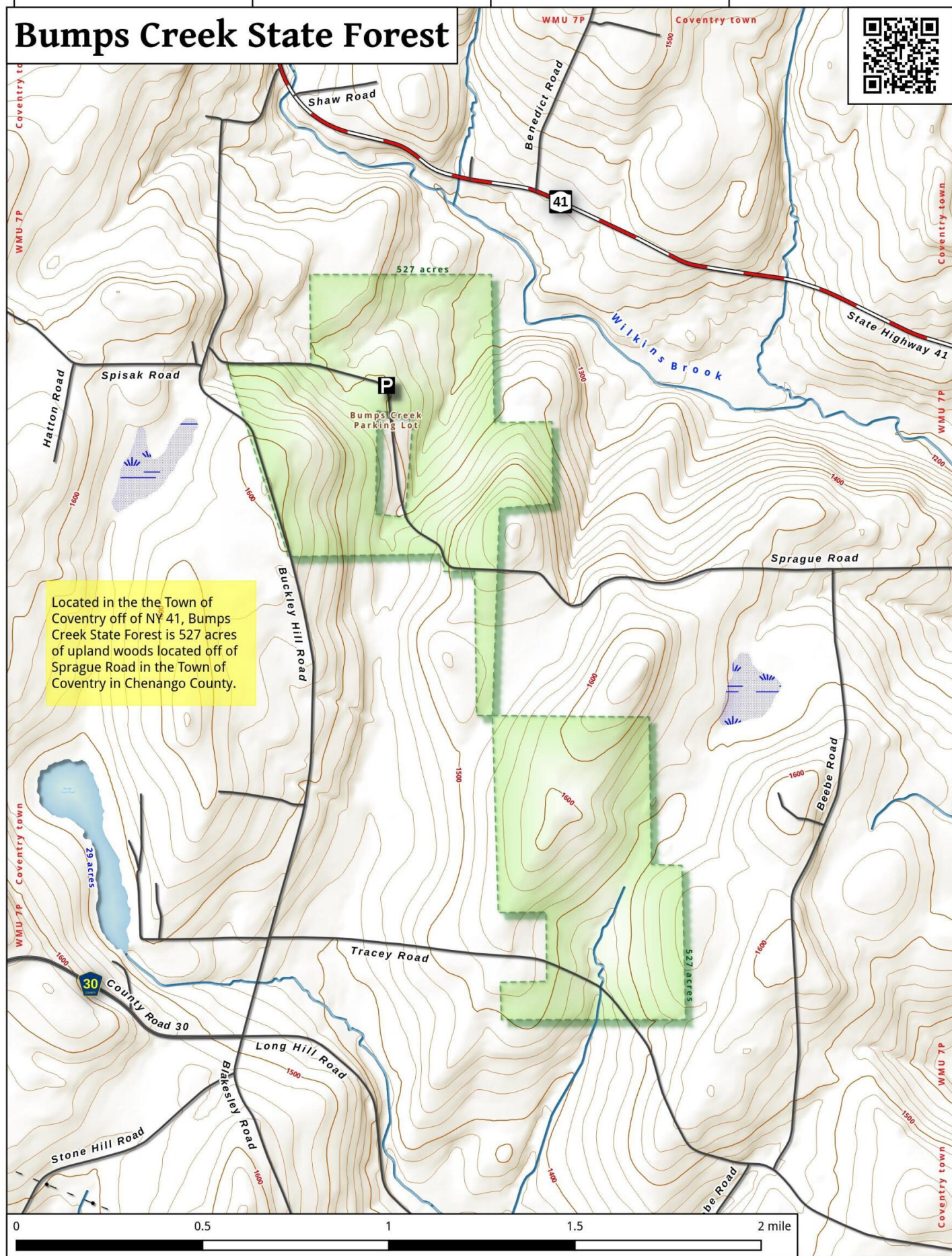
75°36'45"W

75°36'0"W

75°35'15"W

75°34'30"W

# Bumps Creek State Forest



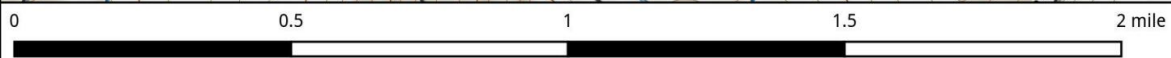
Located in the the Town of Coventry off of NY 41, Bumps Creek State Forest is 527 acres of upland woods located off of Sprague Road in the Town of Coventry in Chenango County.

42°18'0"N

42°17'15"N

42°16'30"N

42°15'45"N



Bumps Creek State Forest Map, March 20, 2016 by AndyArthur.org in QGIS 2.14.0-Essen and Python. Street Map is Copyright © OpenStreetMap contributors, CC BY-SA. NYSDEC Data: DEM, Borders, ADK Wetlands, Trails, Assets. True North. 1 inch = 0.3 miles. Projection: NAD83 / UTM zone 18N. Coordinates: 45" WGS 84. Contours are 20 feet.