

-73.970

-73.965

-73.960

-73.955

-73.950

-73.945

# Lawson Lake County Park

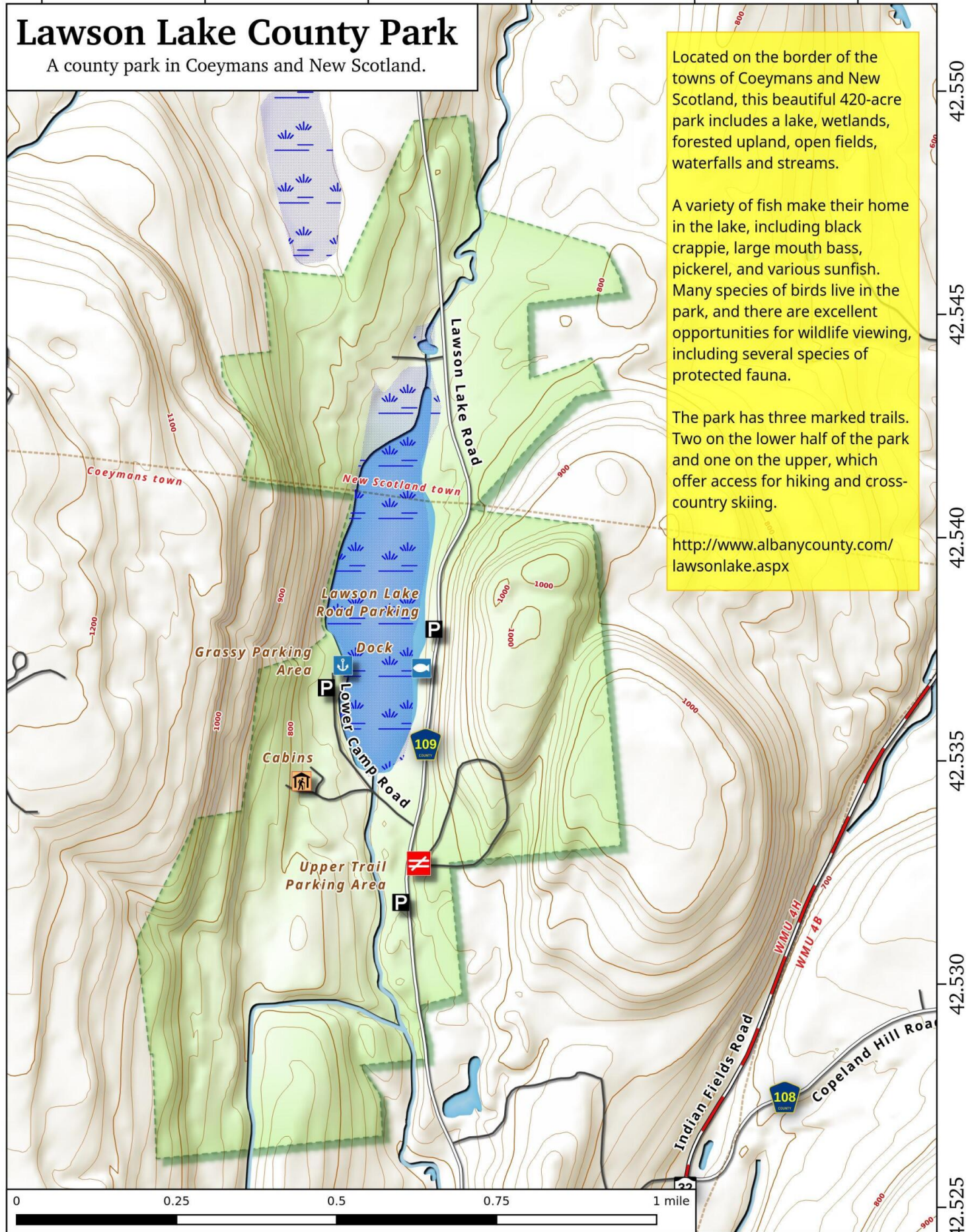
A county park in Coeymans and New Scotland.

Located on the border of the towns of Coeymans and New Scotland, this beautiful 420-acre park includes a lake, wetlands, forested upland, open fields, waterfalls and streams.

A variety of fish make their home in the lake, including black crappie, large mouth bass, pickerel, and various sunfish. Many species of birds live in the park, and there are excellent opportunities for wildlife viewing, including several species of protected fauna.

The park has three marked trails. Two on the lower half of the park and one on the upper, which offer access for hiking and cross-country skiing.

<http://www.albanycounty.com/lawsonlake.aspx>



Lawson Lake County Park Map, March 7, 2017 by AndyArthur.org in QGIS 2.18.3 and Python. Street Map is Copyright © OpenStreetMap contributors, CC BY-SA. NYSDEC Data: DEM, Borders, ADK Wetlands, Trails, Assets. True North. 1 inch = 0.2 miles. Projection: NAD83 / UTM zone 18N. Coordinates: 0.005° latitude-longitude (WGS84). Contours are 20 feet.