

75°10'30"W

75°9'45"W

75°9'0"W

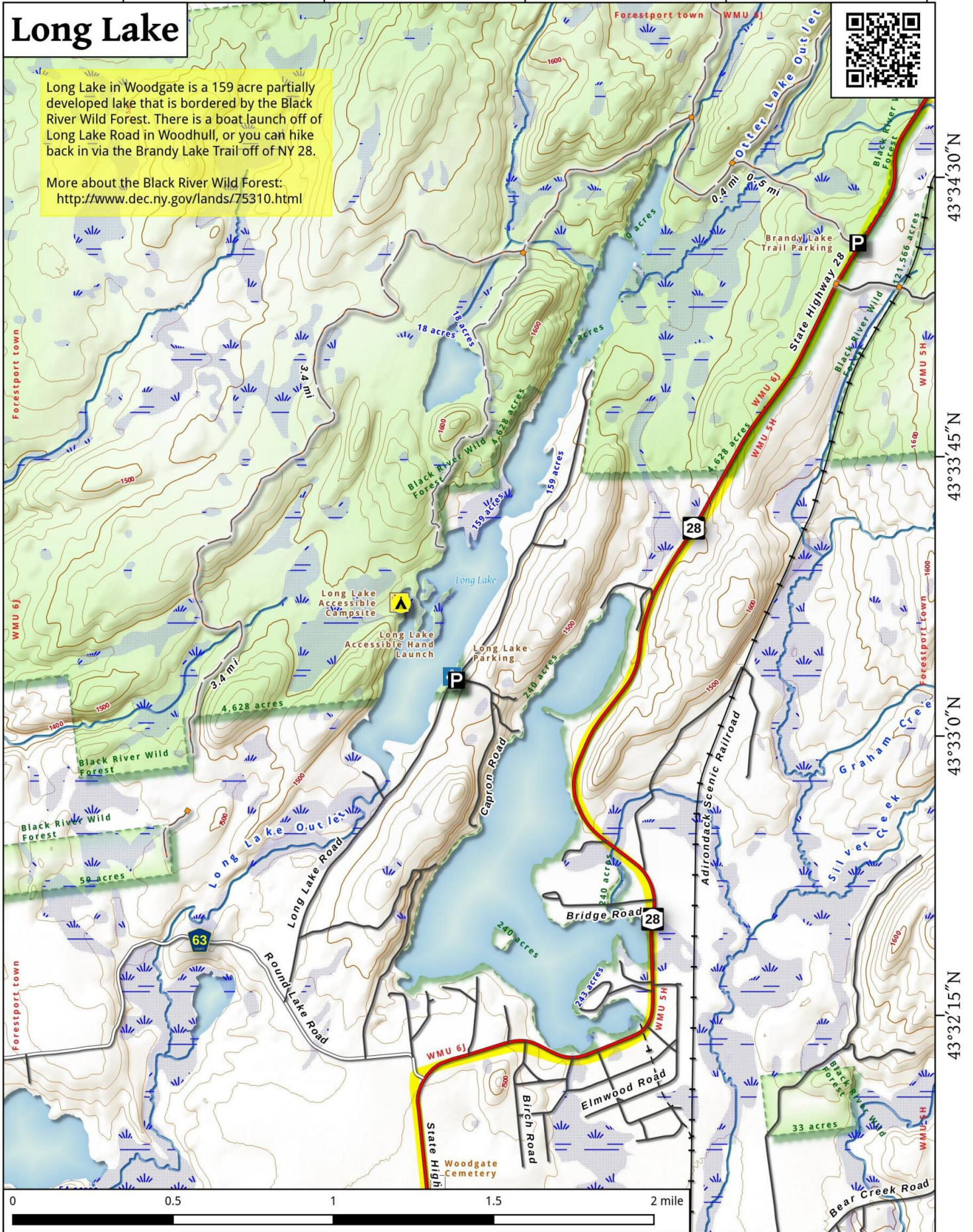
75°8'15"W

75°7'30"W

Long Lake

Long Lake in Woodgate is a 159 acre partially developed lake that is bordered by the Black River Wild Forest. There is a boat launch off of Long Lake Road in Woodhull, or you can hike back in via the Brandy Lake Trail off of NY 28.

More about the Black River Wild Forest:
<http://www.dec.ny.gov/lands/75310.html>



Long Lake Map, May 24, 2016 by AndyArthur.org in QGIS 2.14.2-Essen and Python. Street Map is Copyright © OpenStreetMap contributors, CC BY-SA. NYSDEC Data: DEM, Borders, ADK Wetlands, Trails, Assets. True North. 1 inch = 0.4 miles. Projection: NAD83 / UTM zone 18N. Coordinates: 45° WGS 84. Contours are 20 feet.