

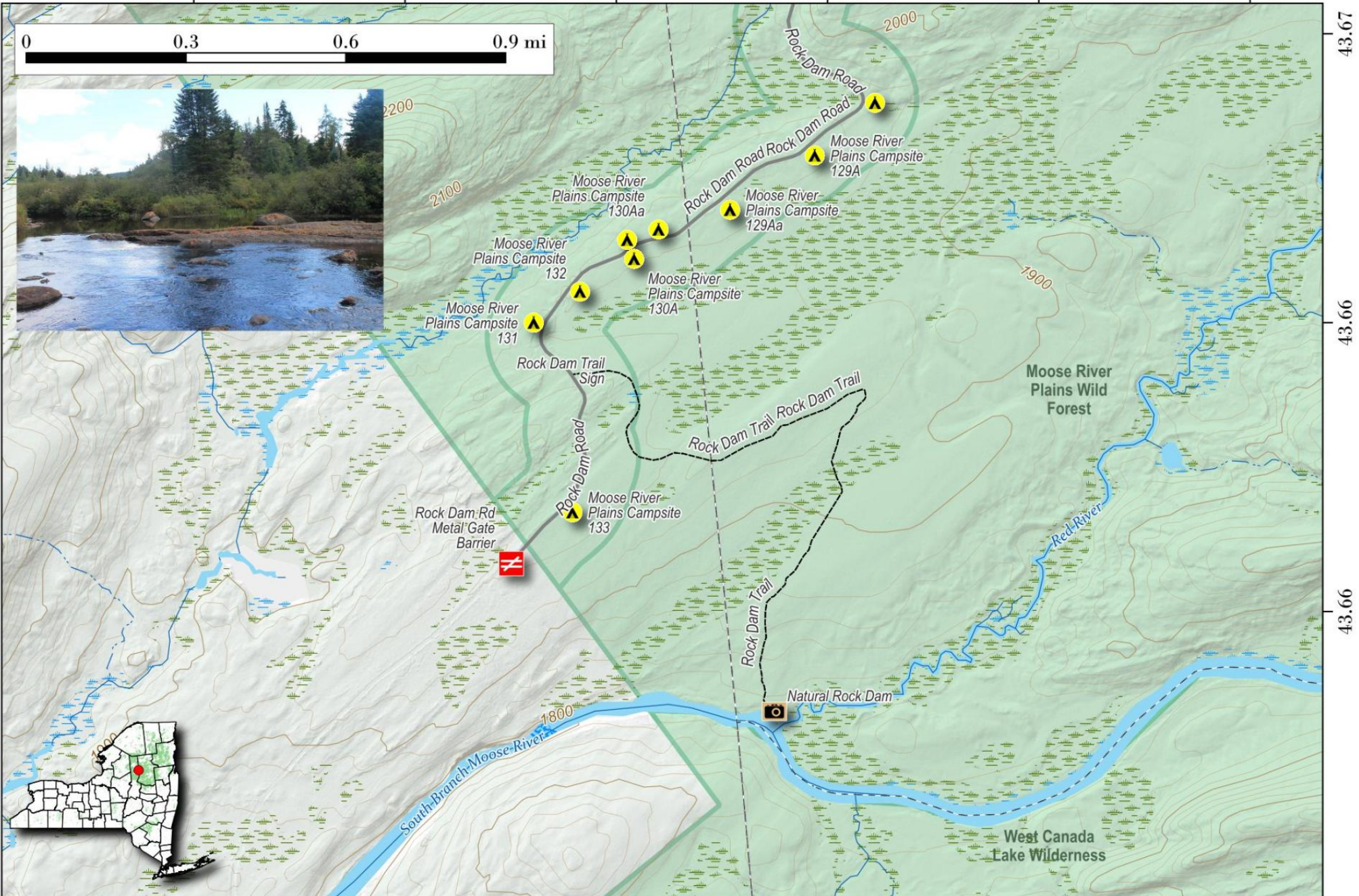
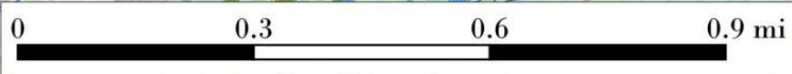
Natural Rock Dam Trail.

At end of Rock Dam Road (opens in July) there is a 2 mile hike to a "natural" dam and opening along the North Branch of the Moose River. Scenic views, fishing spot.

Map created by Andy Arthur on 10/17/2024 in QGIS 3.34.11-Prizren. Contains US Forest Service Base Map. NYS DEC Data. More maps at andyarthur.org.



-74.82 -74.81 -74.80 -74.79 -74.78



43.67
43.66
43.66