

75°18'00"W

75°17'00"W

75°16'00"W

75°15'00"W

75°14'00"W

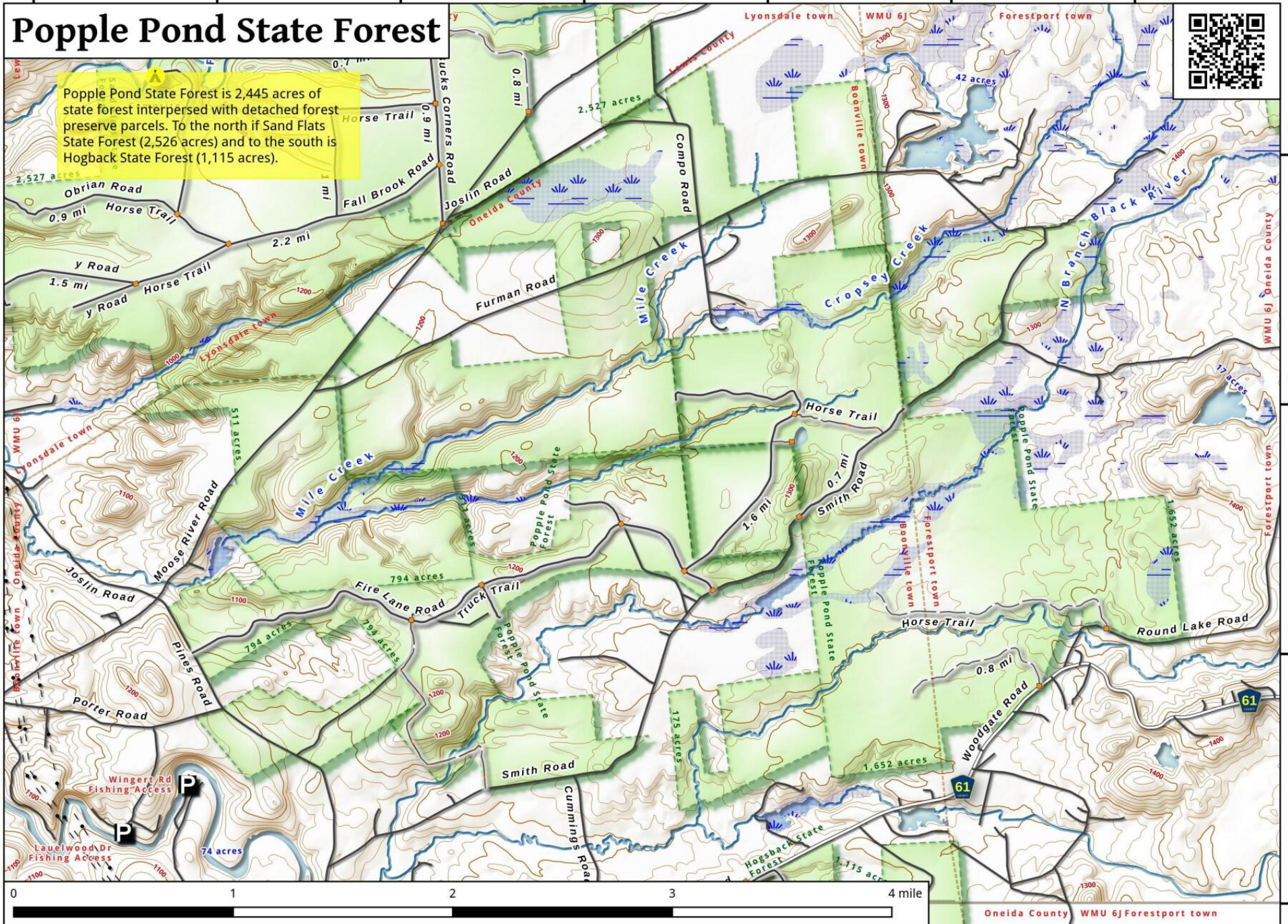
75°13'00"W

75°12'00"W

# Popple Pond State Forest



Popple Pond State Forest is 2,445 acres of state forest interspersed with detached forest preserve parcels. To the north is Sand Flats State Forest (2,526 acres) and to the south is Hogback State Forest (1,115 acres).



Popple Pond State Forest Map, August 14, 2016 by AndyArthur.org in QGIS 2.16.1-Nødebo and Python. Street Map is Copyright © OpenStreetMap contributors, CC BY-SA. NYSDEC Data: DEM, Borders, ADK Wetlands, Trails, Assets. True North. 1 inch = 0.6 miles. Projection: NAD83 / UTM zone 18N. Coordinates: 60" WGS 84. Contours are 20 feet.