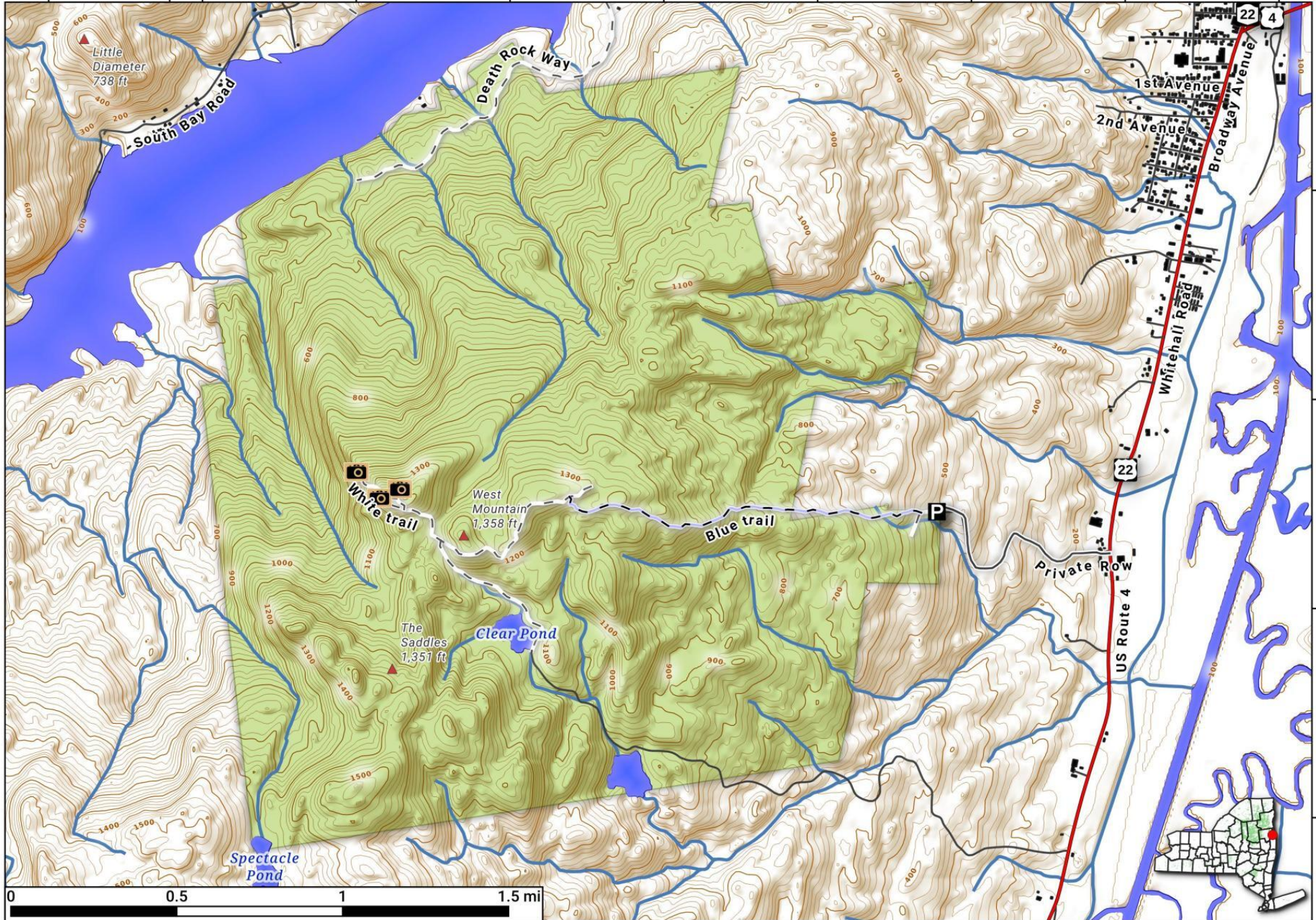


The Saddles State Forest.

The Saddles State Forest is 2,471 acres, south of Whitehall near Lake Champlain. It gets its name from the mountains on the property that look like a saddle, especially from the water on South Bay. Map is projected in Web Mercator 3857 and is 1:29,000 scale, True North. 20 foot contours. Yellow areas are non-state owned park/preserve, special rules may apply. Created by Andy Arthur on 3/3/2023 in QGIS 3.28. Contains DEC Trails/Assets, Additional Campsites/Trails by Andy other data ©OpenStreetMap Data, OSM Maintainers. More maps at andyarthur.org.



-73.48 43.5347 -73.46 -73.45 -73.44 -73.43 -73.42 -73.41 -73.40



43.54
43.53
43.52
43.51