

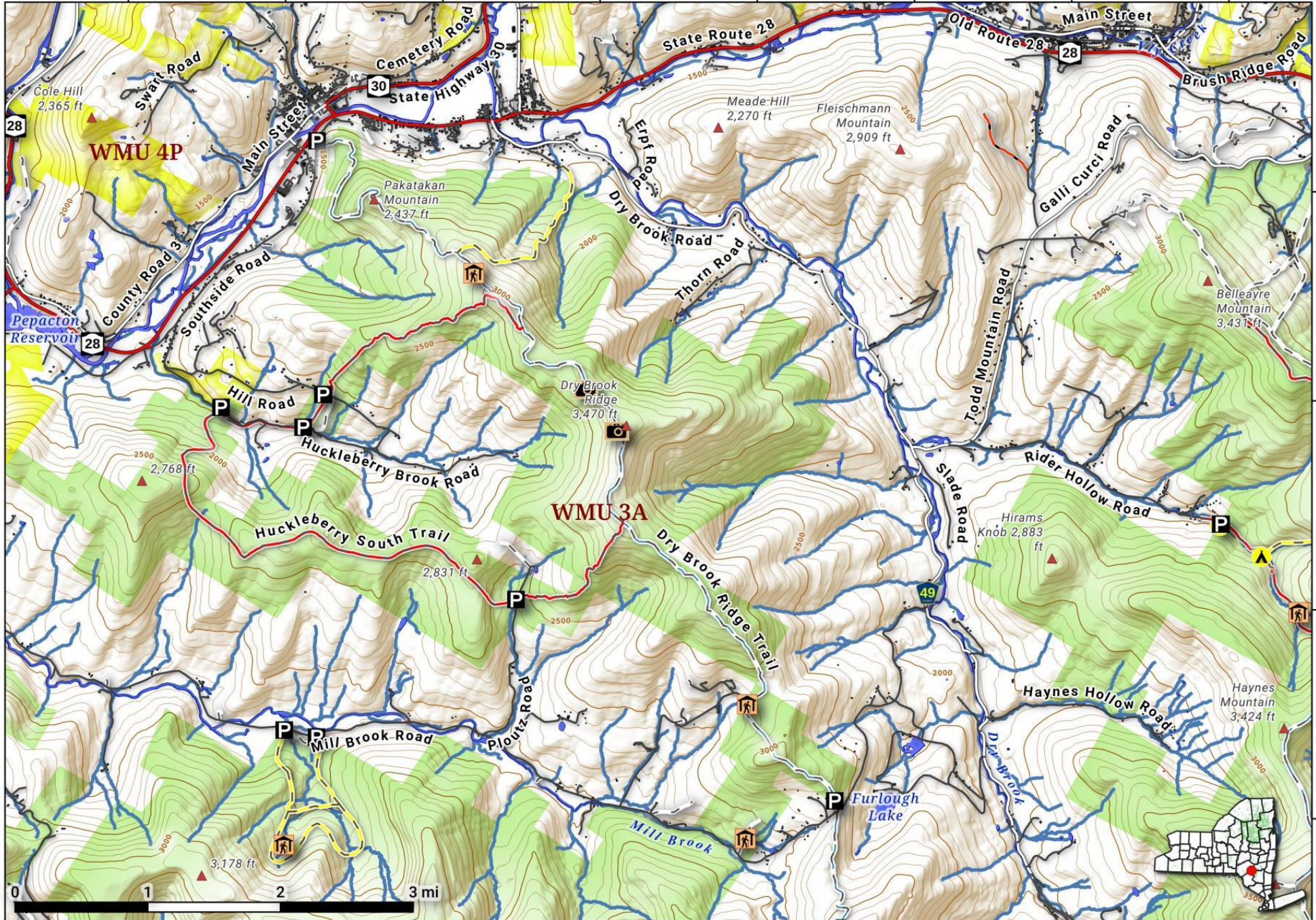
# Dry Brook Ridge Trail. Hiking trail that runs from Margaretville down to Mill Brook Road.

Map is projected in Web Mercator 3857 and is 1:60,000 scale, True North. 50 foot contours. Yellow areas are non-state owned park/preserve, special rules may apply.

Created by Andy Arthur on 10/2/2022 in QGIS 3.26. Contains DEC Trails/Assets, Additional Campsites/Trails by Andy other data ©OpenStreetMap Data, OSM Maintainers. More maps at [andyarthur.org](http://andyarthur.org).



-74.68      -74.65      -74.63      -74.61      -74.58      -74.56      -74.54      -74.52



42.14  
42.12  
42.09  
42.07