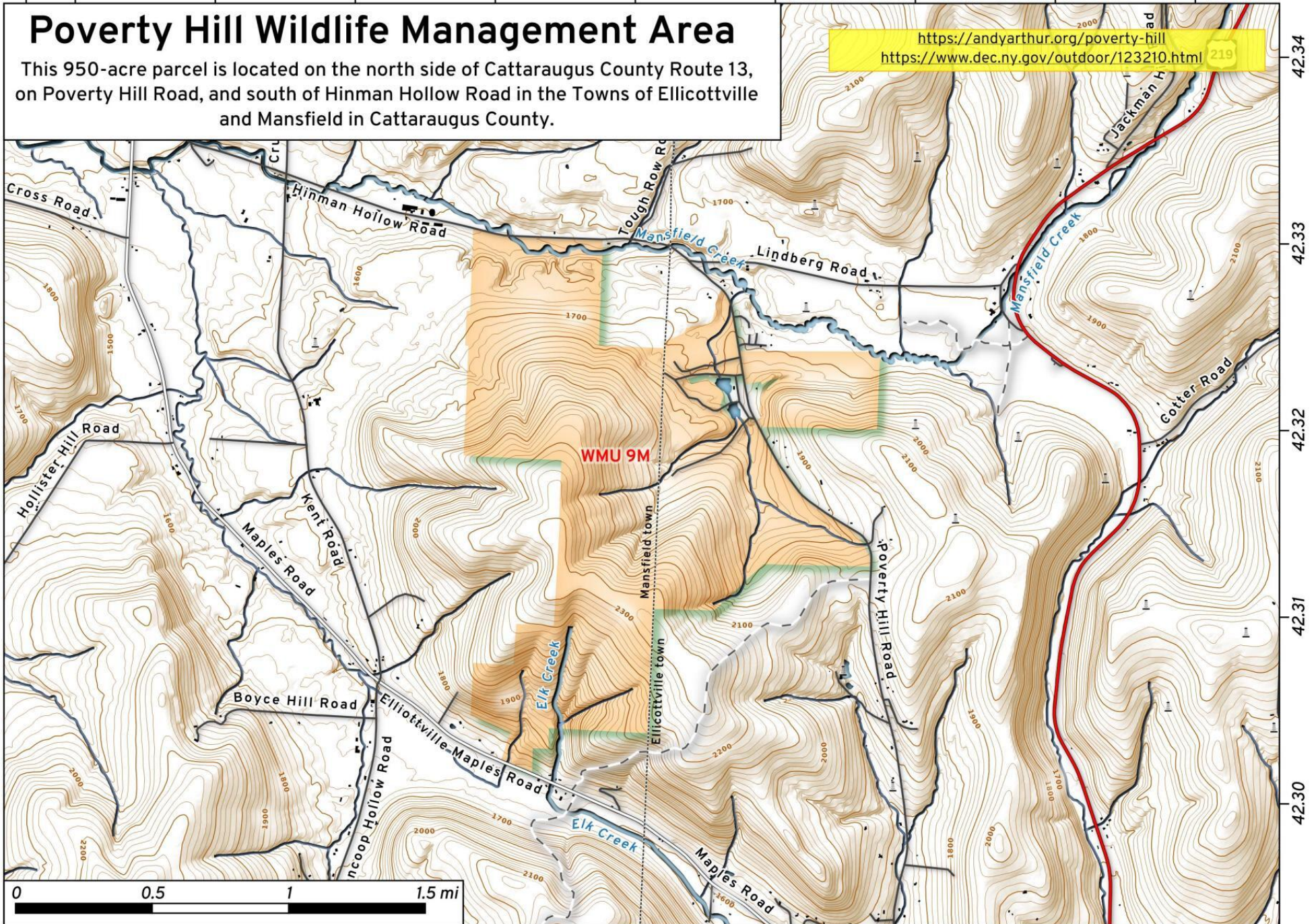


42.34 -78.74      -78.73      -78.72      -78.71      -78.70      -78.69      -78.68      -78.67      -78.66

# Poverty Hill Wildlife Management Area

This 950-acre parcel is located on the north side of Cattaraugus County Route 13, on Poverty Hill Road, and south of Hinman Hollow Road in the Towns of Ellicottville and Mansfield in Cattaraugus County.

<https://andyarthur.org/poverty-hill>  
<https://www.dec.ny.gov/outdoor/123210.html>



Poverty Hill Wildlife Management Area Map, August 18, 2022 by AndyArthur.org in QGIS 3.26.2-Buenos Aires and Python. Street Map is Copyright © OpenStreetMap contributors, CC BY-SA. NYSDEC Data: LiDAR/DEM, Borders, ADK Wetlands, Trails, Assets. True North. 1 inch = 0.5 miles. Projection: NAD83 / UTM zone 17N. Coordinates: 0.01° latitude-longitude (WGS84). Contours are 20 feet. Map is centered on 42.3107,-72.6883.