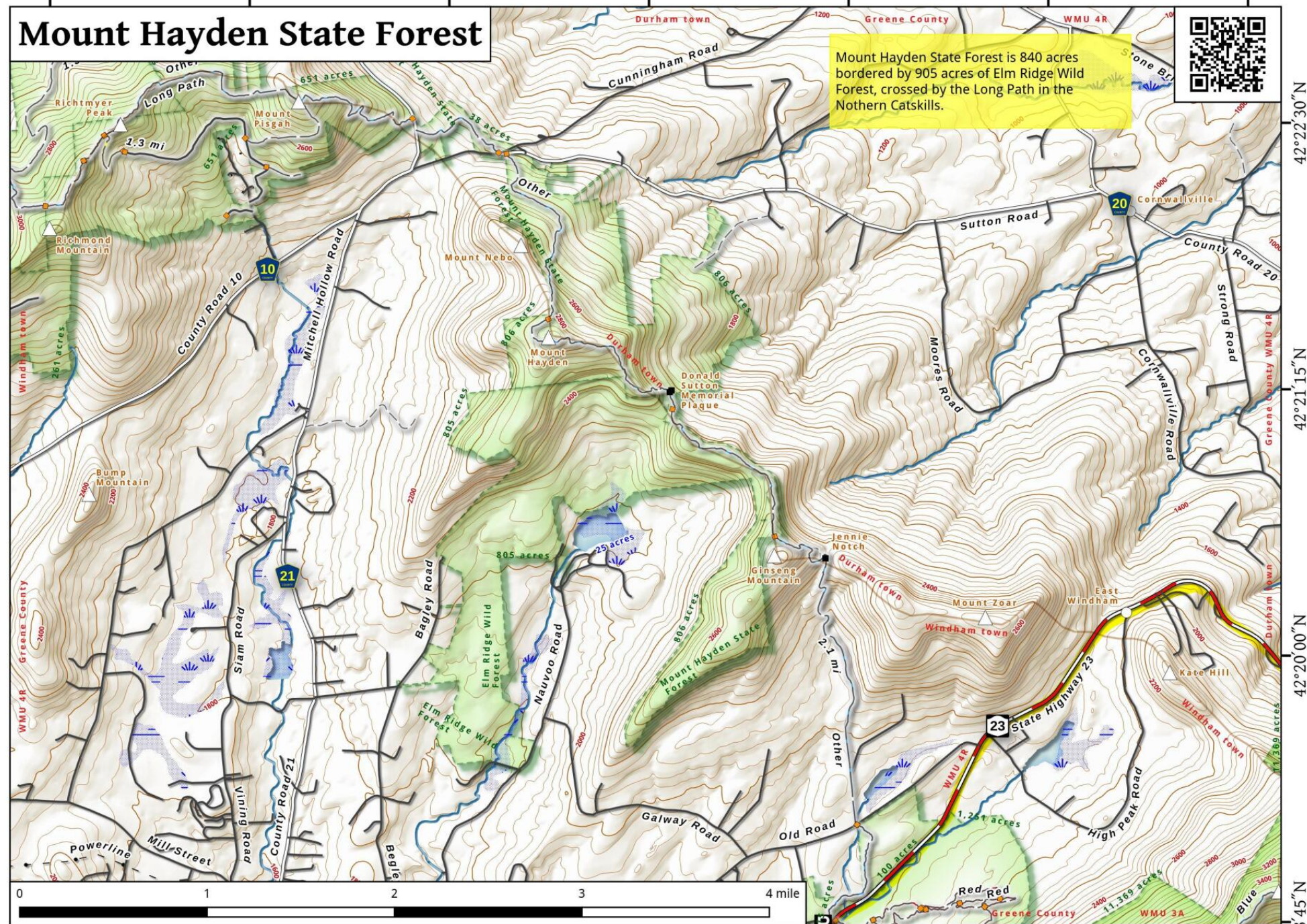


74°16'15"W 74°15'00"W 74°13'45"W 74°12'30"W 74°11'15"W 74°10'00"W 74°08'45"W

# Mount Hayden State Forest

Mount Hayden State Forest is 840 acres bordered by 905 acres of Elm Ridge Wild Forest, crossed by the Long Path in the Northern Catskills.



42°22'30"N  
42°21'15"N  
42°20'00"N  
42°18'45"N

Mount Hayden State Forest Map, August 14, 2016 by AndyArthur.org in QGIS 2.16.1-Nødebo and Python. Street Map is Copyright © OpenStreetMap contributors, CC BY-SA. NYSDEC Data: DEM, Borders, ADK Wetlands, Trails, Assets. True North. 1 inch = 0.7 miles. Projection: NAD83 / UTM zone 18N. Coordinates: 1" 15' WGS 84 Grid. Contours are 40 feet.