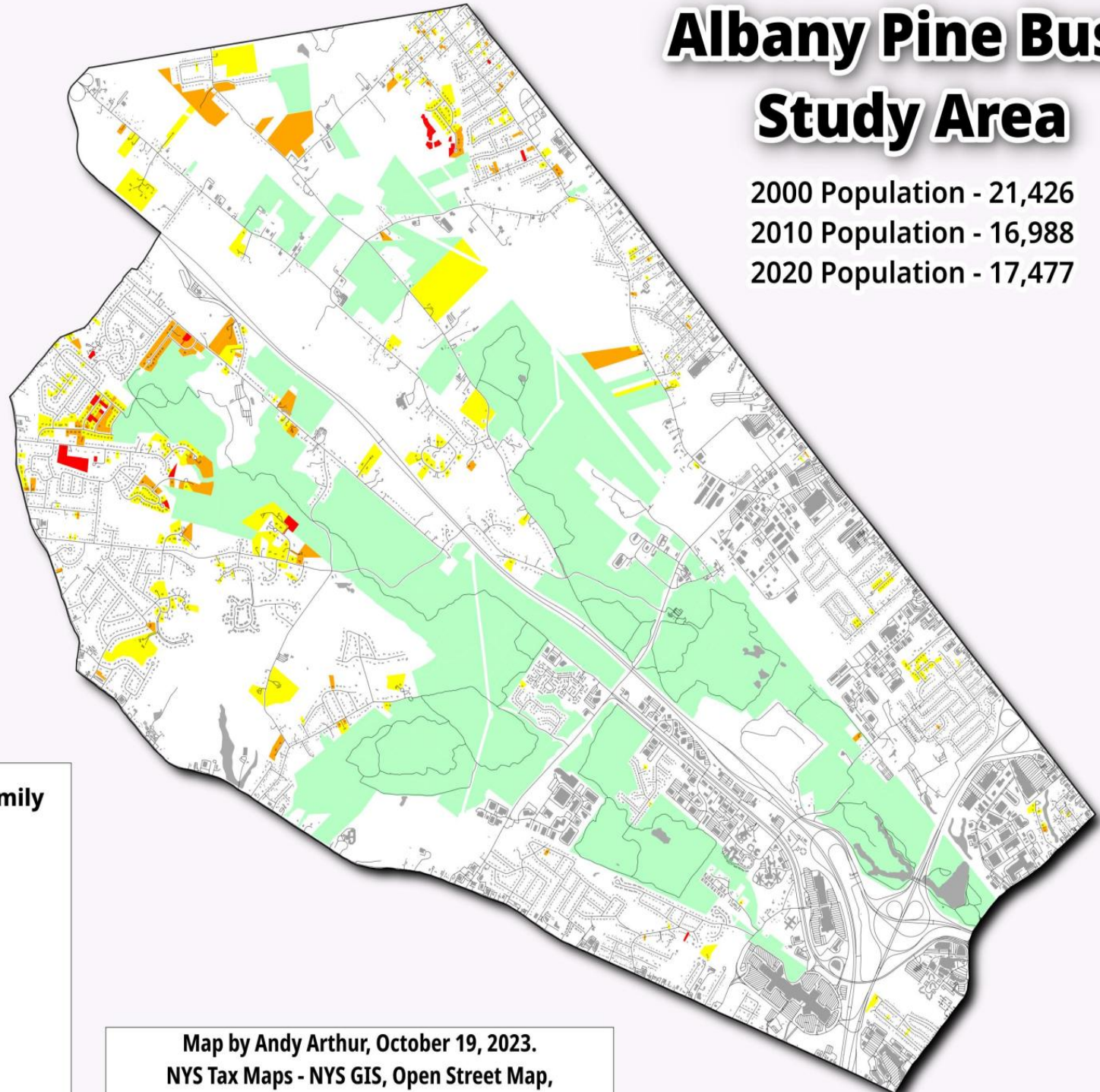


While sprawl continued in the more western portion of the Albany Pine Bush, the eastern portion of the Albany Pine Bush saw depopulation due to several large eminent domain and other purchases by the City of Albany (Trail Park), Fuller Road Corporation (Mckownville Houses/SUNY) and the Pyramid Corporation (Western Avenue/Gabriel Terrace).

Overall, these projects condemned the homes over 4,438 former residents of APB Study area.

Albany Pine Bush Study Area

2000 Population - 21,426
2010 Population - 16,988
2020 Population - 17,477



Residential Single/Multi-Family Buildings - Year Built

- 2000 - 2009
- 2010 - 2019
- 2020 - 2022

Preserve

- Albany Pine Bush Preserve (2019)

Map by Andy Arthur, October 19, 2023.
NYS Tax Maps - NYS GIS, Open Street Map,
TidyCensus Block Data